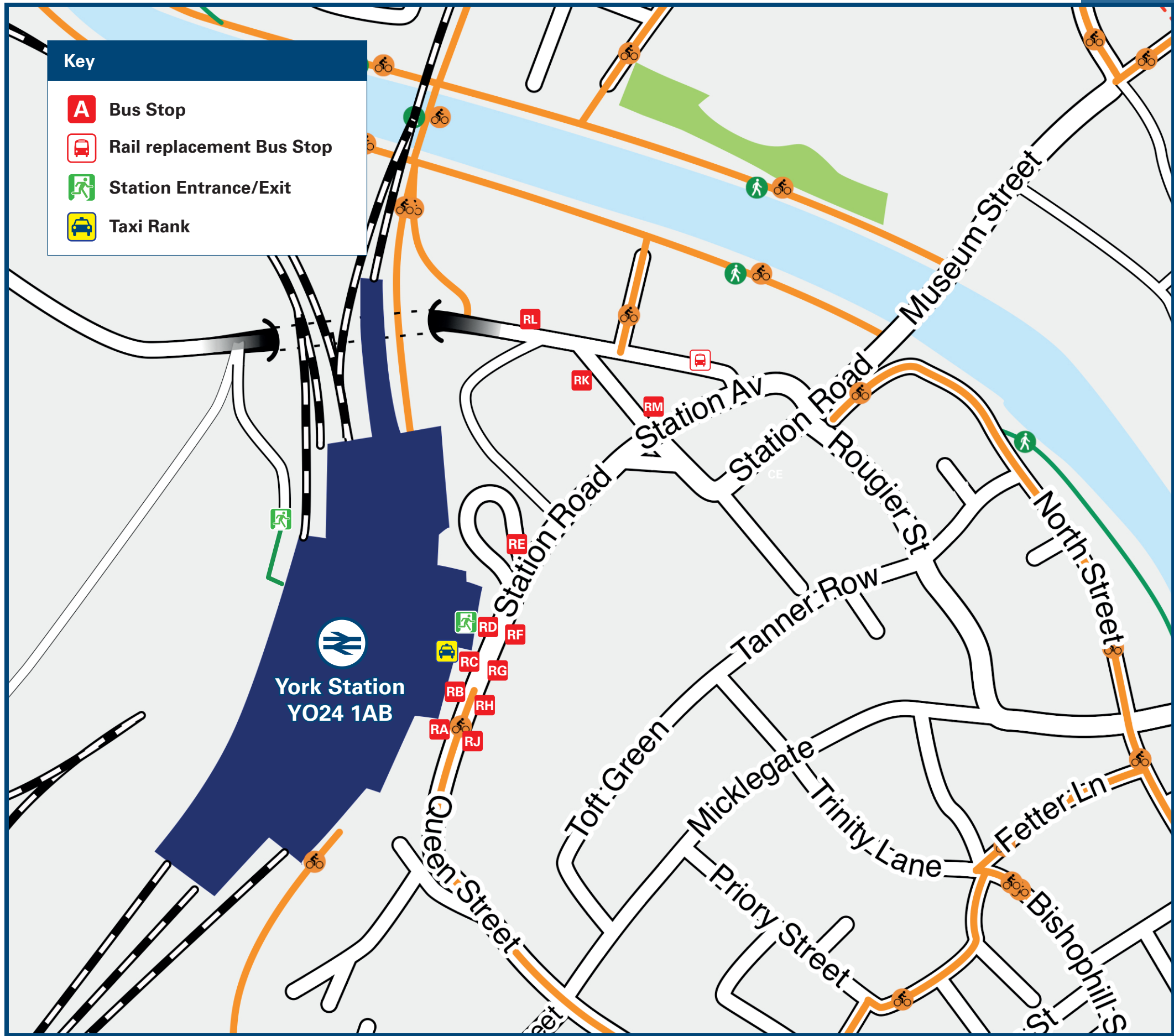




York Station

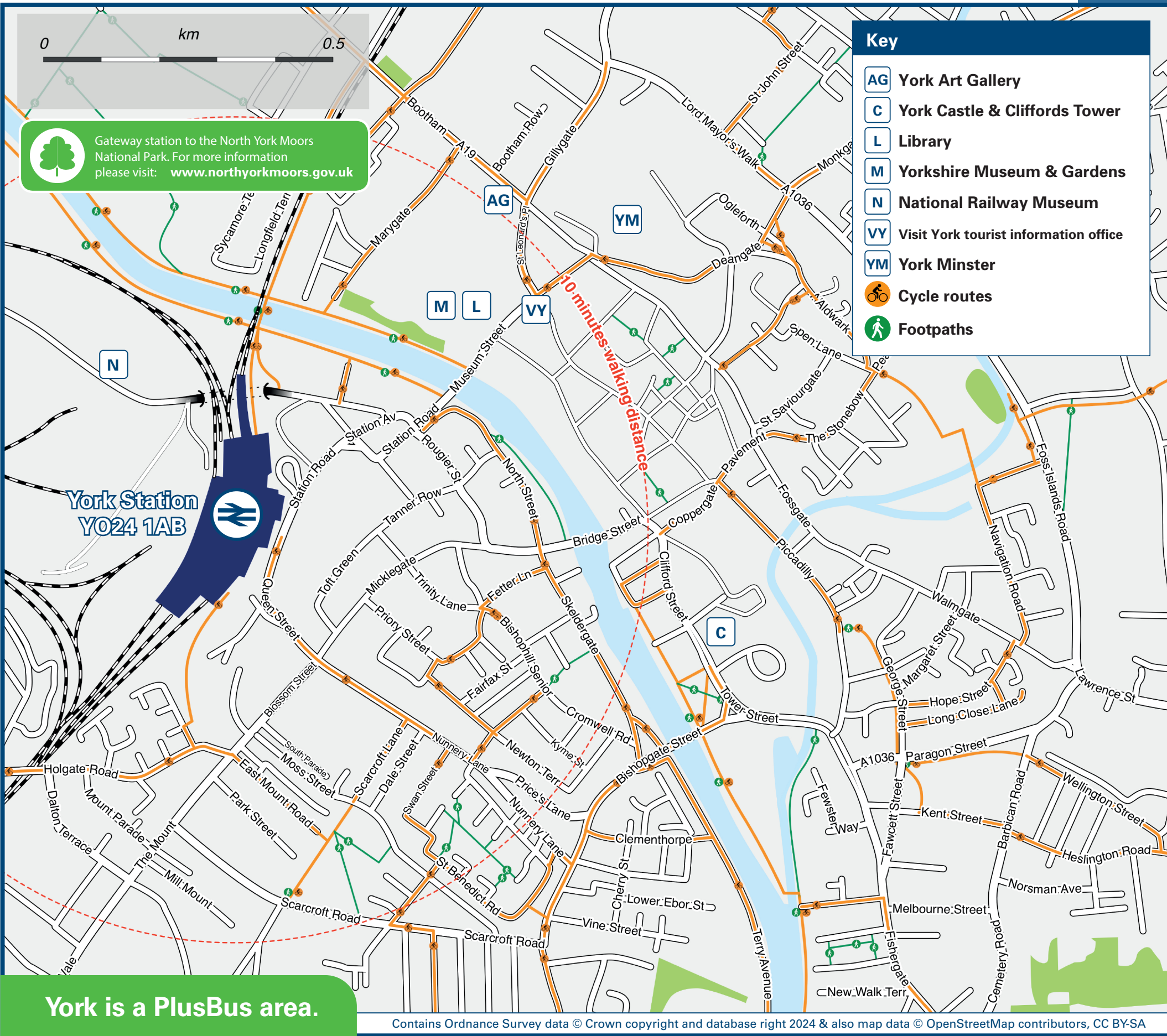
Onward Travel Information

Buses and Taxis and Cycle Hire



Rail Replacement Bus pick up & drop off on Leeman Road/Memorial Gardens.

Local area map



York is a PlusBus area.



PlusBus

PlusBus is a discount price 'bus pass' that you buy with your train ticket. It gives you unlimited bus travel around your chosen town, on participating buses. Visit www.plusbus.info

Main destinations by bus

(Data correct at July 2024)



DESTINATION	BUS ROUTES	BUS STOP
<ul style="list-style-type: none">AcombAcomb (Cornlands Road)Acomb (via Foxwood Lane)Acomb (via Hamilton Drive)Ashley Park (Burnholme)	1, 1A, 5, 5A, 10 24* 4 16 11	R F R H R G R H R B
<ul style="list-style-type: none">Askham Bar (Park & Ride)Askham Bryan College	Y12 37*	R D R G R J
<ul style="list-style-type: none">Badger HillBishopthorpeBoroughbridgeCastle HowardChapelfieldsClifton MoorClifton (Nestle, Rowntree Theatre)	X46, X47 10 11, 21*, 26 82* 81* 1, 1A 6, 40 1, 1A 5, 5A	R C R D R H R H R M R M R A R B
<ul style="list-style-type: none">Clifton ParkClifton WithoutColtonCopmanthorpeCraykeCrematoriumDesigner Outlet Park & Ride	2A~, 30, 30X* 6, 19##, 80* 21* 13 840, 843 40 11 7	R M R M R H R H R J R M R H R H
<ul style="list-style-type: none">Dringhouses	4, Y12 13, 21* 37*, 840, 843	R G R H R J
<ul style="list-style-type: none">DunningtonEarswickEasingwoldEast MoorFERRA (National Reference Laboratory)FosswayFoxwood Lane	X46, X47 10 5, 5A 30, 30X*, 40 40 840, 843 Y12 Y12 (via Askham Bar)	R C R D R B R M R M R C R B R G
<ul style="list-style-type: none">Fulford (Church)	4 26 36*	R G R B R C
<ul style="list-style-type: none">Gate HelmsleyGreen HammertonHaxby	7 10 82* 1, 1A, 13	R H R D R H R A

DESTINATION	BUS ROUTES	BUS STOP
<ul style="list-style-type: none">Heslington (University of York)Heworth (Ashley Park)Heworth Without	66# 11 11 840, 843 82*	R J R B R B R C R H
<ul style="list-style-type: none">Holgate	16, 22*, 24*, 82* 1, 1A, 5, 5A, 10	R H R F
<ul style="list-style-type: none">HuntingtonKirk HammertonLeedsMalton	13 5, 5A, Y12 82* 840, 843 81*	R A R B R H R C R M
<ul style="list-style-type: none">MiddlethorpeMonks CrossNether PoppletonNew EarswickOsbaldwick (Hull Road)	11, 21* Y12 9 81* 10 1, 1A, 13 747*	R H R B R J R M R F R A R C
<ul style="list-style-type: none">PocklingtonPocklington (via Stamford Bridge)PoppletonPoppleton Bar (Park & Ride)	X46, X47 747* 10 59	R C R C R F R K
<ul style="list-style-type: none">Racecourse	11, 21*, 26 197 (Racedays, only)	R H R J
<ul style="list-style-type: none">RawcliffeRawcliffe Bar (Park & Ride)Scarborough (via Malton)ShiptonSkeltonSouth Bank	19##, 30, 30X*, 80* 2, 2A~ 843 30, 30X*, 80* 19##, 30, 30X*, 80* 11, 21*, 26 10	R M R M R C R M R M R H R D
<ul style="list-style-type: none">Stamford BridgeStockton-on-the-ForestStrensallTadcasterTadcaster (via Askham Bryan)University of York	747* 840, 843 5, 5A 840, 843 37* 66# 1, 1A, 13 40	R C R C R B R J R J R J R A R M
<ul style="list-style-type: none">Wigginton		

DESTINATION	BUS ROUTES	BUS STOP
<ul style="list-style-type: none">Woodthorpe	Y12 37*	R G R J
<ul style="list-style-type: none">York City Centre (Clifford St/Tower St)	37* 3, 4	R C R D
<ul style="list-style-type: none">York City Centre (Piccadilly)	16, 21*, 22*, 24*, 412* X46, X47 10	R B R C R D
<ul style="list-style-type: none">York City Sightseeing, Ghost Bus Tours & Golden Tours	Tour-buses	R E
<ul style="list-style-type: none">York College	13 840, 843 1	R H R J R A
<ul style="list-style-type: none">York Hospital	5, 5A 6, 40	R B R M
<ul style="list-style-type: none">Yorkshire Air Museum	36*	R C
<ul style="list-style-type: none">York, St John University	1 5, 5A 6, 40	R A R B R M

Notes

- PlusBus** destination, please see below for details.
- Major changes to bus services are taking place during the York Gateway project. The project is set to be completed in 2025. Please see: <https://www.itravel.york.info/buses/bus-routes-and-journey-times/timetables/> for bus timetable details, or for live information: Live bus information – iTravel York.
- * Bus routes 21, 24, 30X, 36, 37, 80, 81 and 747 are less frequent services, running Mondays to Saturdays, only. No Sunday services.
- # Bus routes 66 & 67 runs daily services, Mondays to Sundays. During University holidays, these service run on a less-frequent timetable.
- ~ Bus route 2A runs an evening service, only, Mondays to Saturdays. No daytime or Sunday service.
- ## Bus route 19 runs a Mondays to Fridays service, only. No Saturday or Sunday service.
- Bike Hire info @ cycle-heaven.co.uk; tel: 01904 621 701
- National Park Gateway station to the North York Moors National Park; For more information please visit: www.nationalparks.gov.uk

Taxis

York is a major Station where taxis are usually available on a rank. Advance booking is not normally necessary, unless arriving early in the morning or late at night. Operators who may accept bookings include: (Inclusion of this number doesn't represent any endorsement of the taxi firm)

York Cars
01904 765 765

Streamline
01904 656 565

Getaway Cars
01904 707 070

Further information about all onward travel

Local Cycle Info

itravel.york.info

For detailed information about bus travel, Park & Ride services, walking and cycling in York.

National Cycle Info

sustrans.org.uk

Sustrans is the UK's leading sustainable transport charity.

Bus Times

See timetable displays at bus stops.



www.traveline.info

0871 200 22 33

calls cost 12p per minute plus your phone company's access charge

NextBuses

Find the bus times for your stop.

Search for a bus stop by entering a postcode, street & town or a stop name & town.

PlusBus

plusbus.info

A discount price 'bus pass' that you buy with your train ticket. It gives you unlimited bus travel around your chosen town, on participating buses.

National Rail Enquiries

Online

nationalrail.co.uk

NRE App

Free National Rail Enquiries app for iOS and Android

Social Media

facebook.com/nationalrailenq
@nationalrailenq

Alert Me

You can sign up to Alert Me messages on the National Rail Enquiries website where you can receive train and platform notifications directly to your smart phone.

nationalrail.co.uk/alertme

Contact Centre

03457 48 49 50

Calls cost no more than calls to geographic numbers (01 or 02) and may be recorded.

PlusBike

nationalrail.co.uk/plusbike

For more information.



National Rail
Britain's train companies working together

