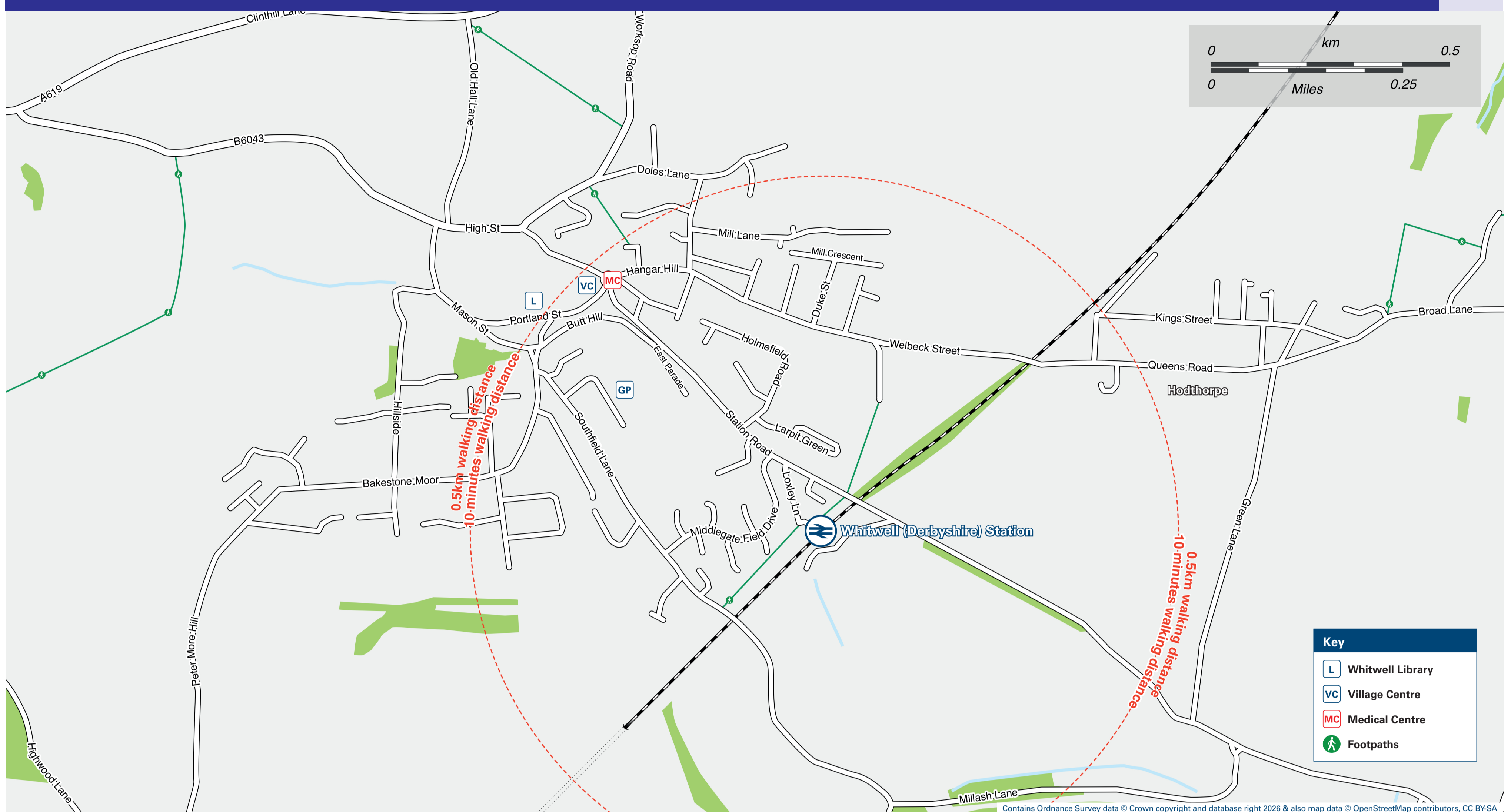




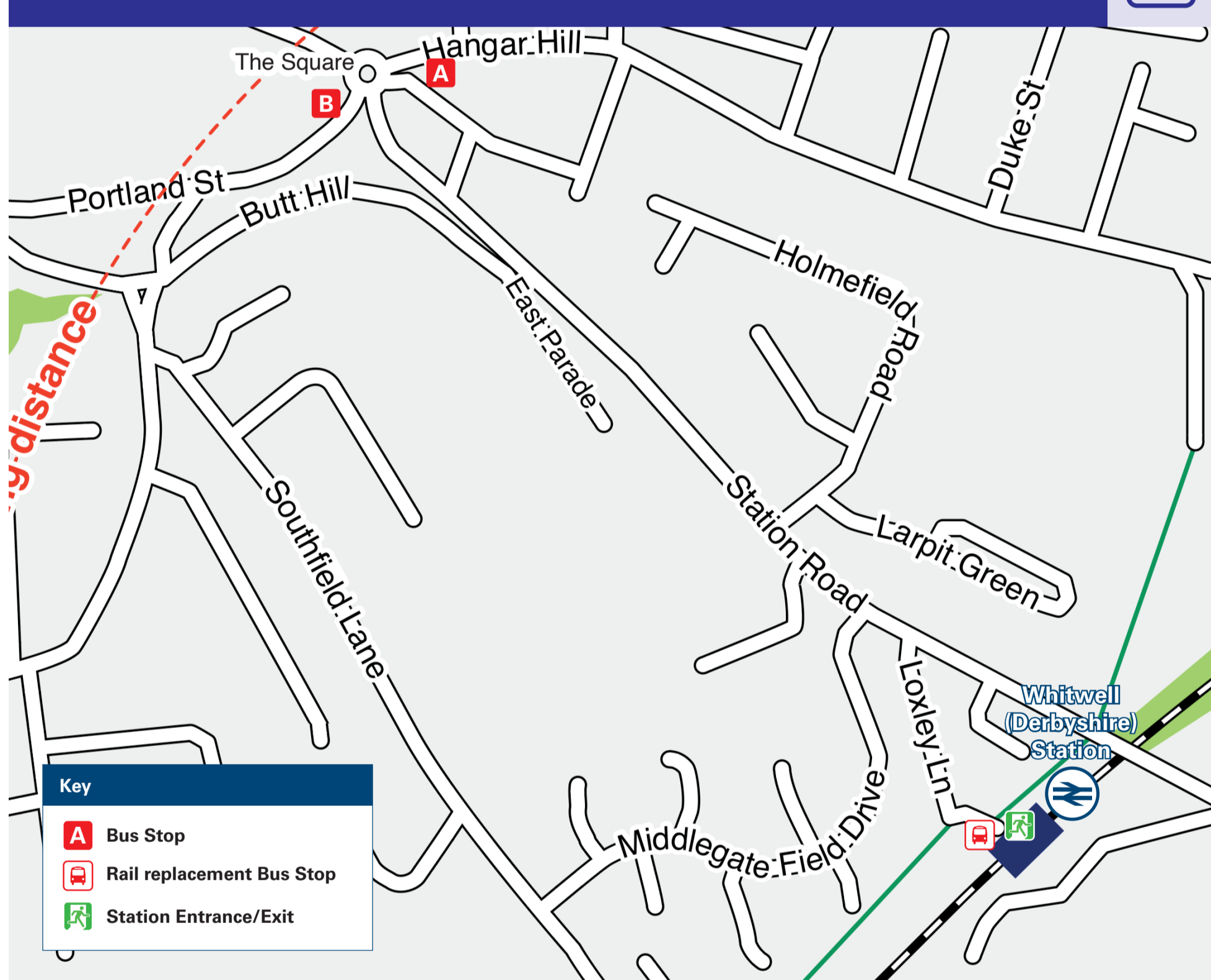
Onward Travel Information

Whitwell (Derbyshire) Station

Local area map



Buses



Rail replacement buses and coaches in the station car park.

Main destinations by bus

(Data correct at April 2026)

DESTINATION	BUS ROUTES	BUS STOP
Bakestone Moor	77, 77A#	A
Barlborough	77, 77A#	A
Brimington	77, 77A#	A
Chesterfield	77, 77A#	A
Clowne	77, 77A#	A
Creswell	77, 77A#	A
Hodthorpe	77, 77A#	B
Inkersall	77A#	A
Mastin Moor	77, 77A#	A
Staveley	77, 77A#	A
Worksop	77, 77A#	B

NOTES

Bus route 77 operates daytime services on Mondays to Saturdays, excluding Bank Holidays. Buses depart from Whitwell The Square, stops A and B on the map, 10 minutes walk from this station. For bus times and days of operation please contact TraveLine on www.traveline.info or call: 0871 200 22 33; or see www.derbsbus.info

Please note there are no train services from this station on Sundays.

Bus route 77A operates evening services on Mondays to Saturdays, and all day services on Sundays and Bank Holidays.

Direct trains operate to this destination from this station.

Taxis

Whitwell station has no taxi rank or cab office. Advance booking is essential, please consider using the following local operators: (Inclusion of this number doesn't represent any endorsement of the taxi firm)

Mazzas Taxis & Minibuses
01909 721 620

Premier Cars
0115 913 8918

Further information about all onward travel

Local Cycle Info

derbyshire.gov.uk/transport-roads/transport-plans/sustainable-travel

For more information about cycle routes.

National Cycle Info

walkwheelcycletrust.org.uk

Bus Times

See timetable displays at bus stops.

www.traveline.info
0871 200 22 33
public transport info
please your phone company's access charge



PlusBus

plusbus.info

PlusBus is a discount price 'bus pass' that you buy with your train ticket. It gives you unlimited bus travel around your chosen town, on participating buses. Visit plusbus.info

National Rail Enquiries

Online	NRE App	Social Media	Alert Me	Contact Centre	PlusBike
nationalrail.co.uk	Free National Rail Enquiries app for iOS and Android	facebook.com/nationalrailenq @nationalrailenq	nationalrail.co.uk/alertme You can sign up to Alert Me messages on the National Rail Enquiries website where you can receive train and platform notifications directly to your smart phone.	03457 48 49 50 Calls cost no more than calls to geographic numbers (01 or 02) and may be recorded.	nationalrail.co.uk/plusbike For more information.

EMR

National Rail

