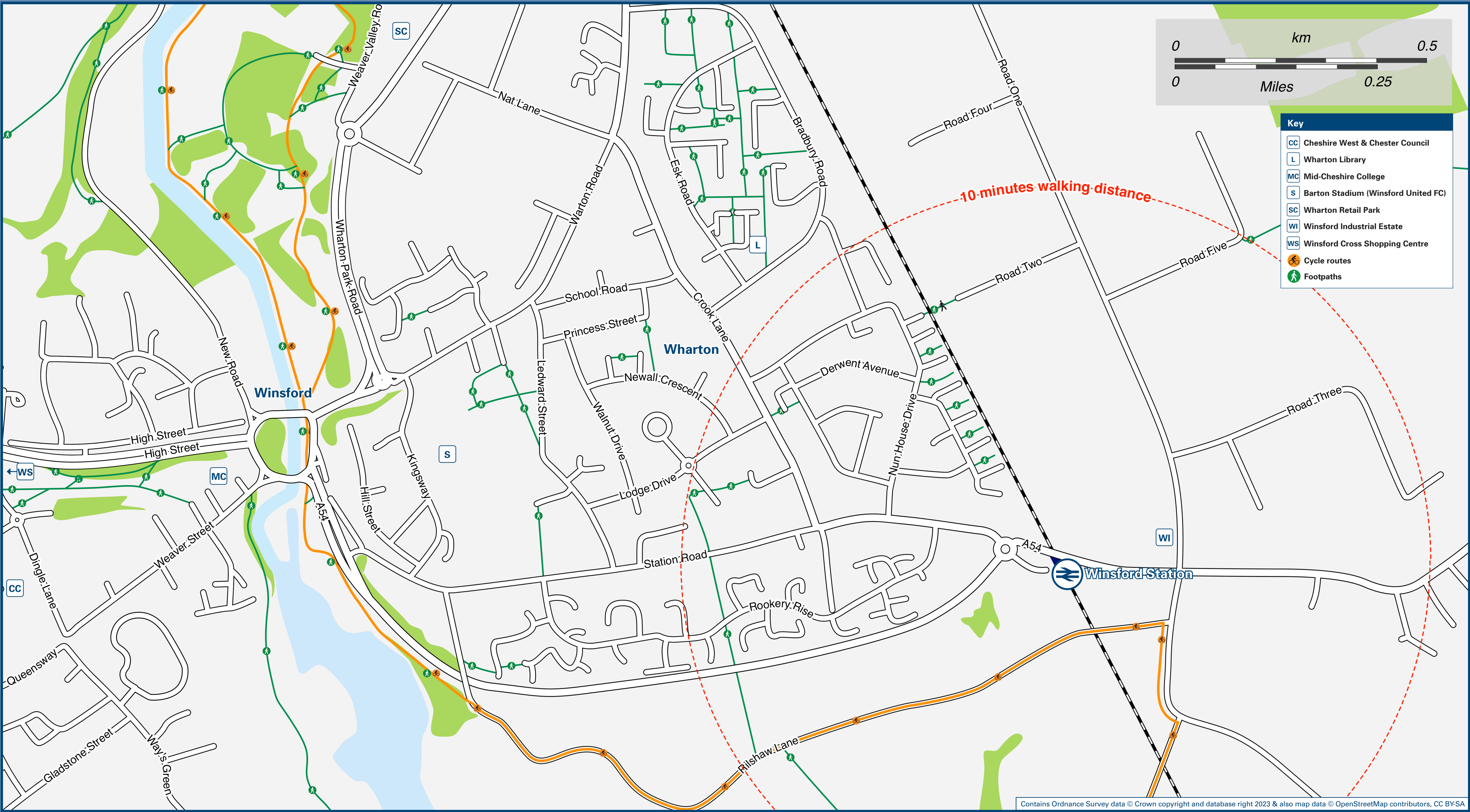




Winsford Station

Onward Travel Information

Local area map



Buses



In the event of engineering work, the bus or coach will collect from the car park at the front of the station

Main destinations by bus

(Data correct at September 2023)

DESTINATION	BUS ROUTES	BUS STOP
Clive	37	A
Crewe	37	A
Davenham	37	A
Elworth (Sandbach Railway Station)	37	A
Haslington	37	A
Kingsmead Estate	37	A
Leftwich	37	A
Mere Heath	37	A
Middlewich	37	A
Moulton Village	37	A
Northwich (Town Centre / Interchange)	37	A
Sandbach (Common)	37	A
Stanthorne	37	A
Wharton (Winsford)	37	A
Wheelock	37	A
Wheelock Heath	37	A
Winsford Industrial Estate	37	A
Winsford (Town Centre / The Guildhall)#	37	A
Winterley	37	A

Notes

Bus routes 37 operates Mondays to Saturdays. No service on Sundays or Bank Holidays.
For bus times and other bus service enquiries, contact Traveline on 0871 200 22 33 or contact the bus operator (see below):
Bus route 37 operates Mondays to Saturdays. No service on Sundays or Bank Holidays.
D&G Bus (for bus route 37) email: info@dgbus.co.uk or call 01270 252 970.
Additional bus services depart from Winsford Town Centre, near The Guildhall and Library.
Direct trains operate to this destination from this Station

Taxis

Winsford Station has no taxi rank or cab office. Advance booking is essential, please consider using the following local operators: (Inclusion of this number doesn't represent any endorsement of the taxi firm)

Gemini Cars
01606 594 020

GM Travel
01606 550 707

Further information about all onward travel

Local Cycle Info	National Cycle Info	Bus Times	NextBuses	PlusBus
cheshirewestandchester.gov.uk For more information about cycle routes.	sustrans.org.uk Sustrans is the UK's leading sustainable transport charity.	See timetable displays at bus stops. www.traveline.info 0871 200 22 33 calls cost 10p per minute plus your phone company's access charge	Find the bus times for your stop. Search for a bus stop by entering a postcode, street & town or a stop name & town.	plusbus.info A discount price 'bus pass' that you buy with your train ticket. It gives you unlimited bus travel around your chosen town, on participating buses.

National Rail Enquiries

Online	NRE App	Social Media	Alert Me	Contact Centre	PlusBike
nationalrail.co.uk	Free National Rail Enquiries app for iOS and Android	facebook.com/nationalraileng @nationalraileng	You can sign up to Alert Me messages on the National Rail Enquiries website where you can receive train and platform notifications directly to your smart phone. nationalrail.co.uk/alertme	03457 48 49 50 Calls cost no more than calls to geographic numbers (01 or 02) and may be recorded.	nationalrail.co.uk/plusbike For more information.



This poster shows details of popular destinations and main, frequent bus routes. Additional services may run, so please check with Traveline or see posters at local bus stops. Whilst considerable care has been taken to ensure the information contained on this poster is correct and accurate, National Rail cannot accept responsibility for any loss or inconvenience caused by any errors or omissions, or for loss, damage, injury or inconvenience relating to the cancellation, alteration, delay or diversion of a service. For any feedback, please e-mail comments@onwardtravelposters.com

Scan this code with your mobile for full station information.