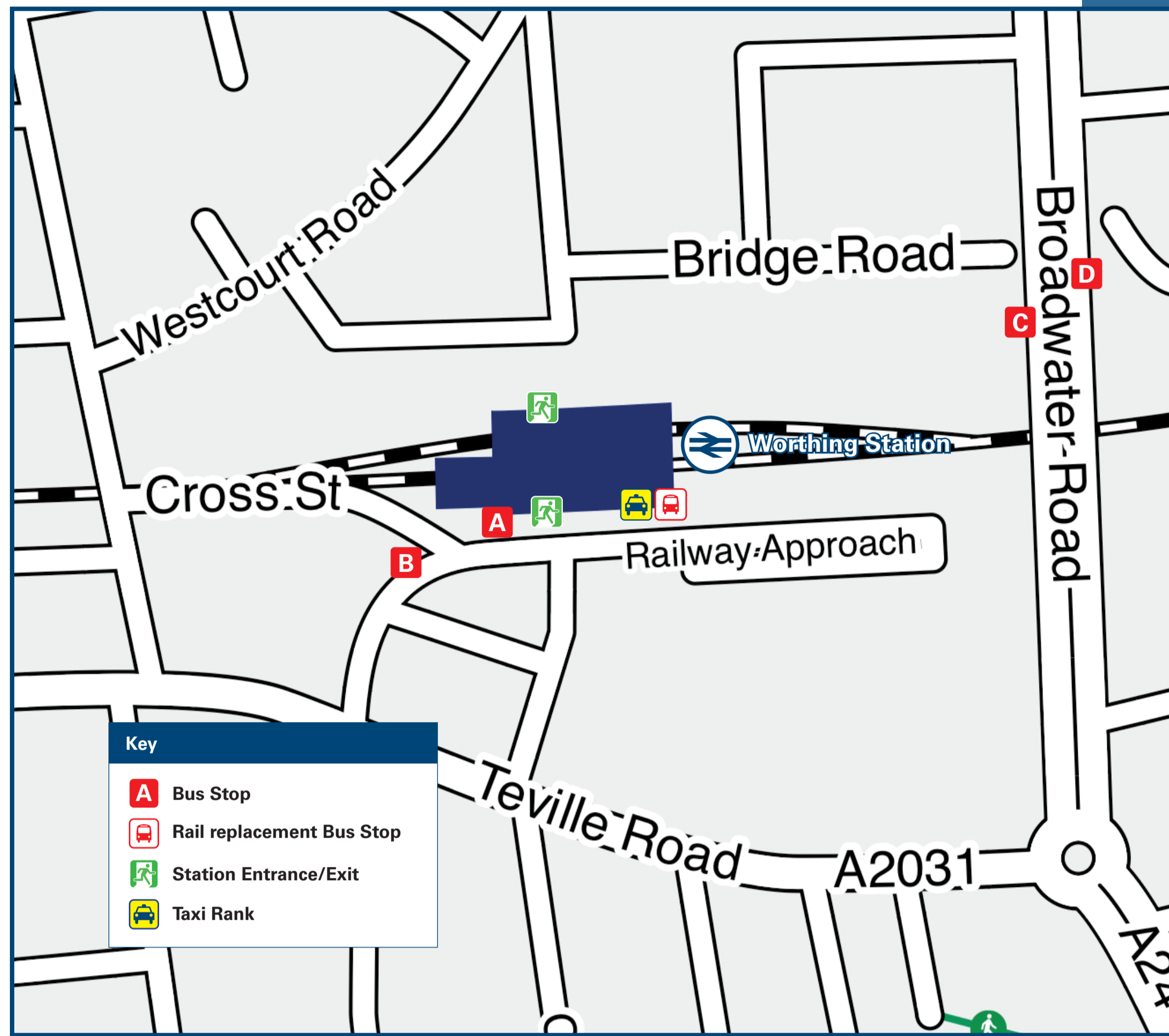




# Worthing Station

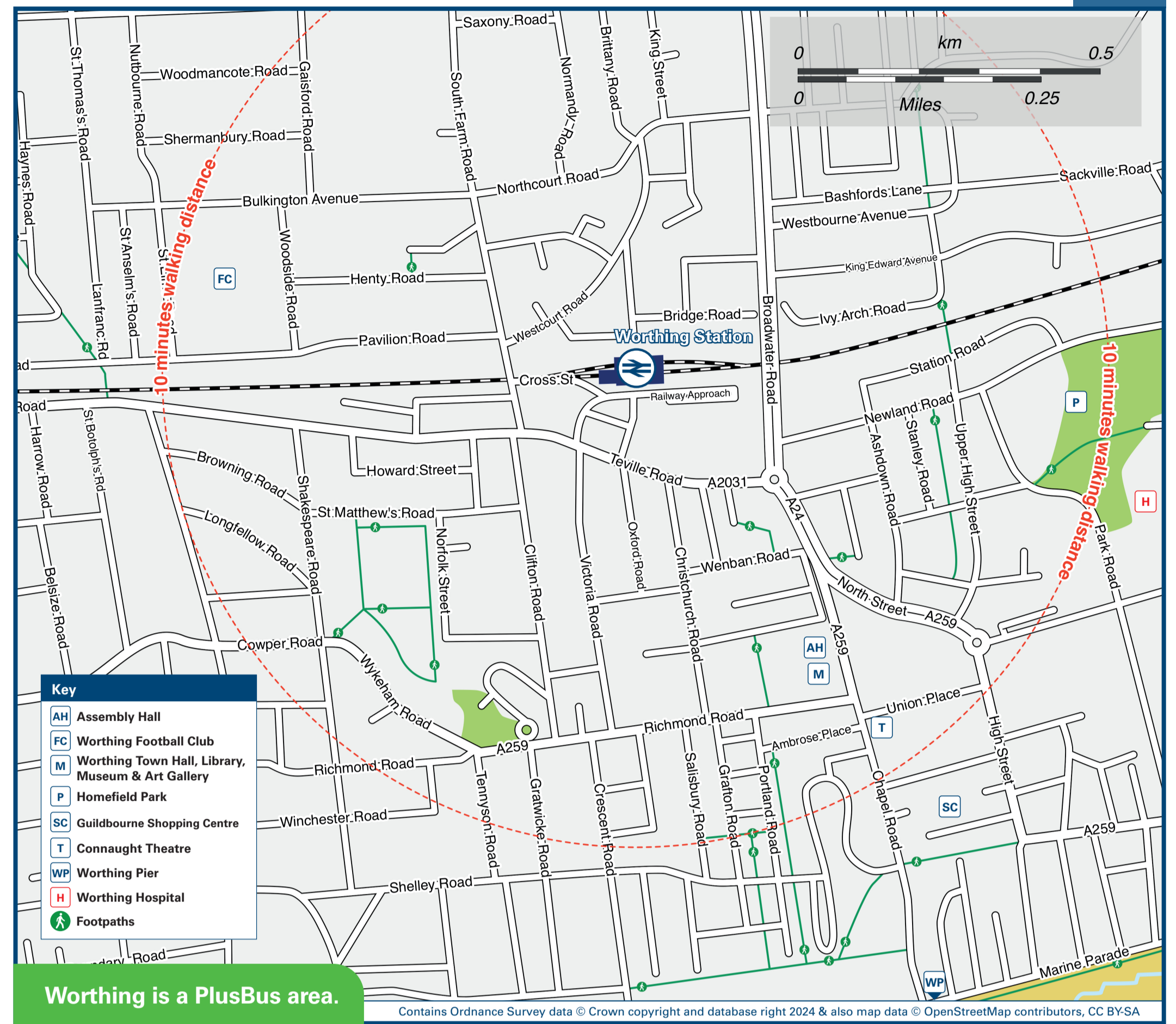
# Onward Travel Information

## Buses and Taxis



Rail replacement buses depart from the Station front.

## Local area map



**PlusBus** is a discount price 'bus pass' that you buy with your train ticket. It gives you unlimited bus travel around your chosen town, on participating buses. Visit [www.plusbus.info](http://www.plusbus.info)

## Main destinations by bus (Data correct at May 2024)

DESTINATION	BUS ROUTES	BUS STOP
Ashington (The Red Lion)	23	C
Broadwater (Church)	5, 7	B
Broadwater (Lyons Farm, Sainsbury's)	1, 5, 7, 23	C
Crawley (Bus Station, Town Centre)	7	B
Durrington (Boxgrove Parade, The Strand)	16	D
Durrington (Tesco Superstore)	23	C
Durrington (The Lamb)	10	B
Findon Valley (Central Avenue)	5, 10	B
Findon Village (The Black Horse)	7	A
Fittleworth	5, 10	B
High Salvington (Furze Road)	1, 23	C
Horsham (Bus Station, Town Centre)	1	C
Horsham (Railway Station)	23	C

DESTINATION	BUS ROUTES	BUS STOP
Lancing (North Road Post Office)	7	B
Midhurst (Bus Station)	16	D
North Sompting (Howard Road)	1	C
Petworth (Market Square)	7	B
Pulborough (Railway Station)	1	C
Pulborough Village	1	C
Salvington (Acacia Avenue)	23	C
Salvington (Swandean Hospital)	5	B
Sompting (The Marquis)	7	A
Storrington (Bus Station)	7	B
Tarring (Glebe Road)	16	D
Tarring (Lincett Drive)	1	C
Tarring (The Thomas A Becket)	10	B
	5	B
	7	A

DESTINATION	BUS ROUTES	BUS STOP
Washington (Recreation Ground)	1, 23	C
West Chiltoning (Common)	1	C
Worthing Hospital	16	D
Worthing (Marine Parade for Seafront & Pier) #	23	D
Worthing (South Street for Shops & Seafront) #	5, 7, 10	A
	1, 16, 23	D

### Notes

- PlusBus** destination, please see below for details.
- Bus routes 7, 10 and 16 operate Mondays to Saturdays services, only. No Sunday services.
- Bus routes 1, 5, and 23 operate daily services.
- For bus times and the latest bus service information, please contact Traveline on [www.traveline.info](http://www.traveline.info), or call 0871 200 22 33 or contact the bus operator (see below):
- Compass Travel (for bus routes 7 & 16) [www.compass-travel.co.uk](http://www.compass-travel.co.uk), or call 01903 690 025; Metrobus (for bus route 23) [www.metrobus.co.uk](http://www.metrobus.co.uk), or call 01293 449 191; or Stagecoach South (for bus routes 1, 7, 5 & 10) [www.stagecoachbus.com](http://www.stagecoachbus.com), or call 0345 121 0190.
- Direct trains operate to this destination from this Station.
- # Bus services to all parts of Worthing and beyond depart from Worthing South Street and Marine Parade, which is a 15 to 20 minutes walk from Worthing station.

## Taxis

Worthing station is served by a taxi rank or cab office. Check availability before travelling, and pre-book if necessary. Please consider using the following local operators: (Inclusion of this number doesn't represent any endorsement of the taxi firm)

**Arrow Taxi**  
01903 212 121

**A & A Cars**  
01903 201 201

**Zoom Worthing**  
01903 333 333

## Further information about all onward travel

<b>Local Cycle Info</b> <a href="http://adur-worthing.gov.uk">adur-worthing.gov.uk</a> For more information about cycle routes.	<b>National Cycle Info</b> <a href="http://sustrans.org.uk">sustrans.org.uk</a> Sustrans is the UK's leading sustainable transport charity.	<b>Bus Times</b> See timetable displays at bus stops. <a href="http://www.traveline.info">www.traveline.info</a> 0871 200 22 33 call cost 12p per minute plus your phone company's access charge	<b>NextBuses</b> <b>Find the bus times for your stop.</b> Search for a bus stop by entering a postcode, street & town or a stop name & town.	<b>PlusBus</b> <a href="http://plusbus.info">plusbus.info</a> A discount price 'bus pass' that you buy with your train ticket. It gives you unlimited bus travel around your chosen town, on participating buses.
---	---	--	--	---

## National Rail Enquiries

<b>Online</b> <a href="http://nationalrail.co.uk">nationalrail.co.uk</a>	<b>NRE App</b> Free National Rail Enquiries app for iOS and Android	<b>Social Media</b> facebook.com/nationalrailenq @nationalrailenq	<b>Alert Me</b> You can sign up to Alert Me messages on the National Rail Enquiries website where you can receive train and platform notifications directly to your smart phone. <a href="http://nationalrail.co.uk/alertme">nationalrail.co.uk/alertme</a>	<b>Contact Centre</b> 03457 48 49 50 Calls cost no more than calls to geographic numbers (01 or 02) and may be recorded.	<b>PlusBike</b> <a href="http://nationalrail.co.uk/plusbike">nationalrail.co.uk/plusbike</a> For more information.
---	--	---	---	--	--



**National Rail**  
Britain's train companies working together



This poster shows details of popular destinations and main, frequent bus routes. Additional services may run, so please check with Traveline or see posters at local bus stops. Whilst considerable care has been taken to ensure the information contained on this poster is correct and accurate, National Rail cannot accept responsibility for any loss or inconvenience caused by any errors or omissions, or for loss, damage, injury or inconvenience relating to the cancellation, alteration, delay or diversion of a service. For any feedback, please e-mail [comments@onwardtravelposters.com](mailto:comments@onwardtravelposters.com)

Scan this code with your mobile for full station information.