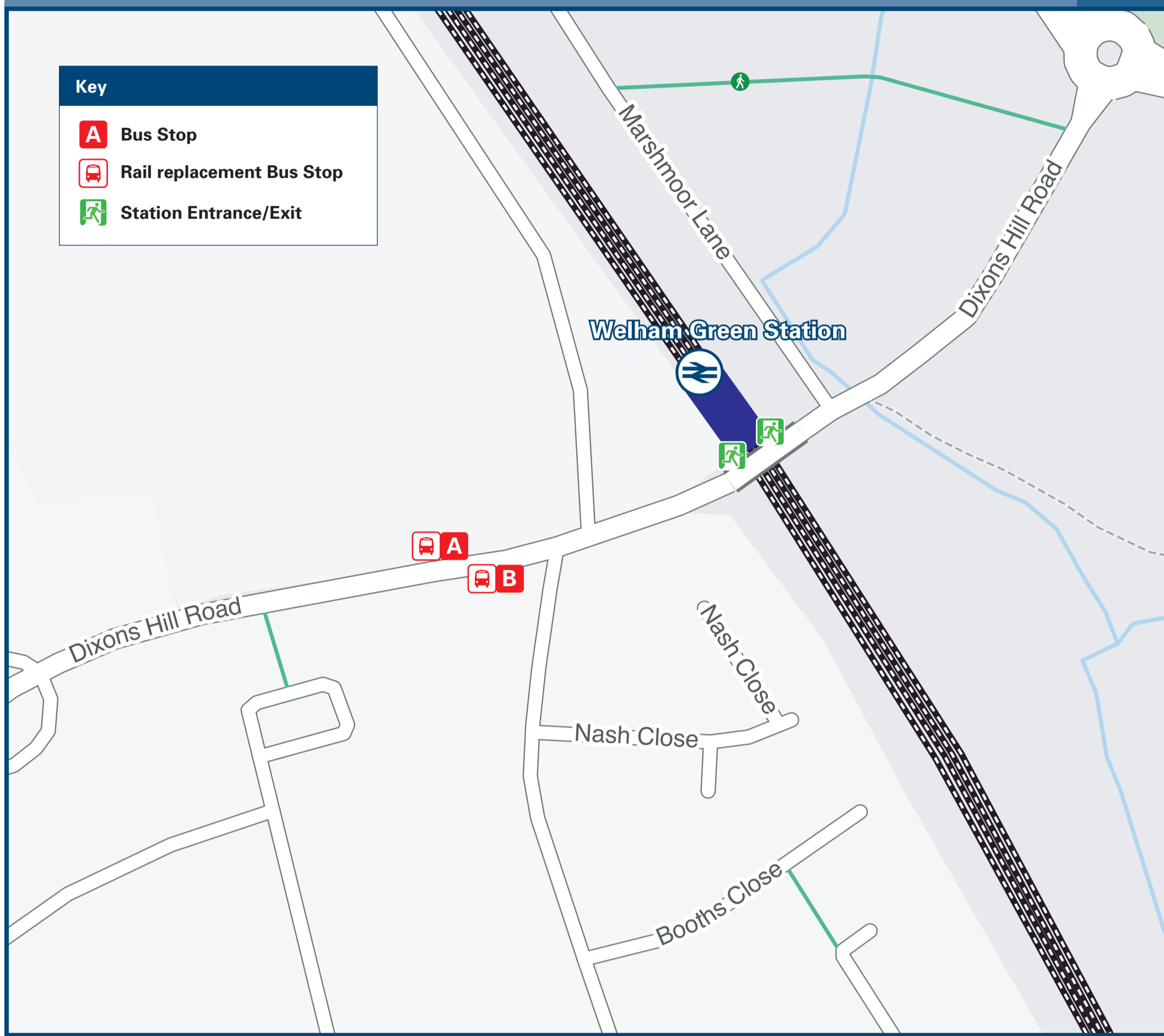




# Welham Green Station

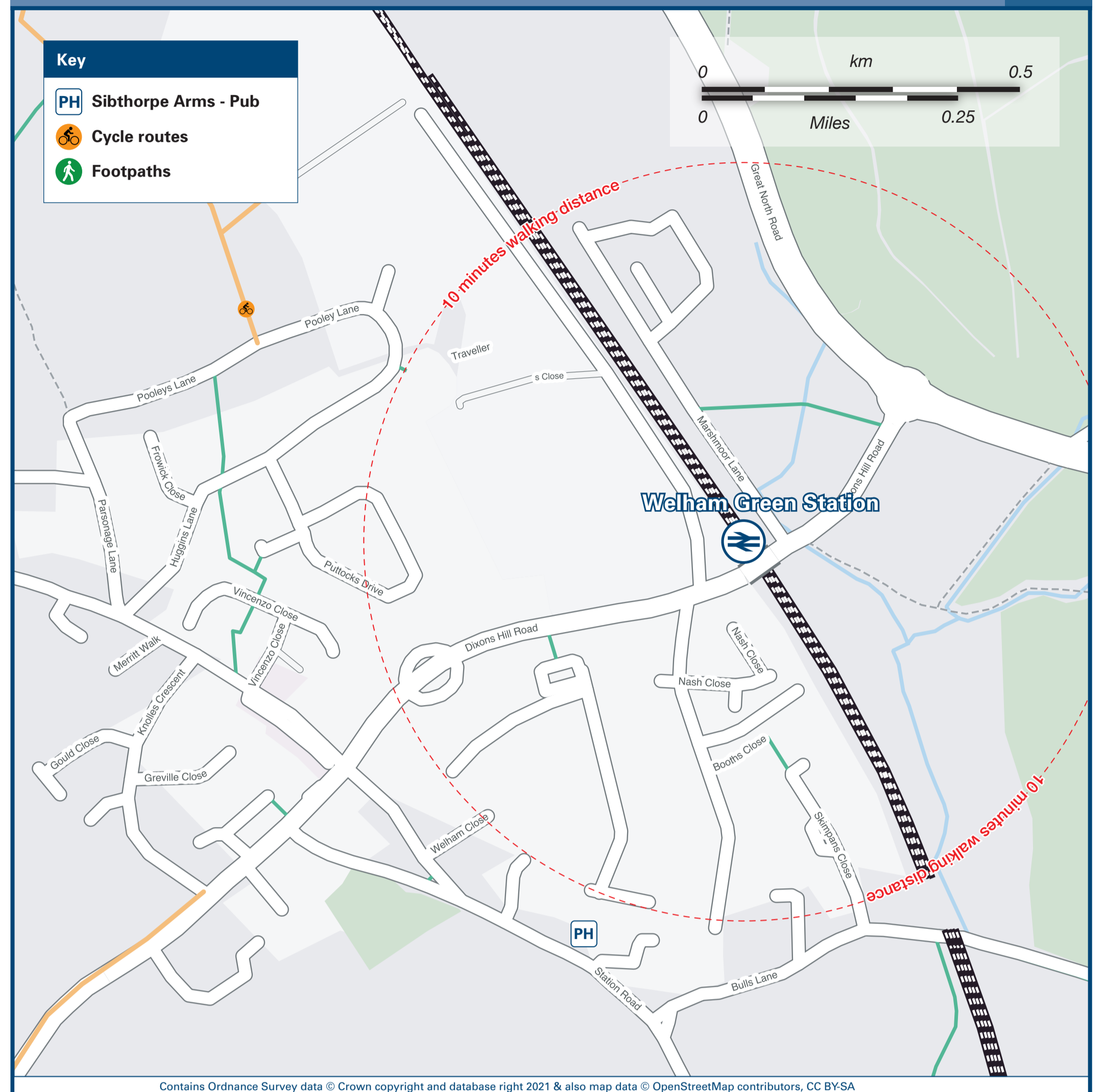
## Onward Travel Information

### Buses



Rail replacement buses depart from stop A towards Welwyn Garden City and Stevenage and from stop B towards Potters Bar and London, stops A and B are located on Dixon Hill Road.

### Local area map



### Main destinations by bus

(Data correct at May 2023)



DESTINATION	BUS ROUTES	BUS STOP	DESTINATION	BUS ROUTES	BUS STOP	DESTINATION	BUS ROUTES	BUS STOP
Batford	610	A	Hatfield (University of Hertfordshire)	610#	A	Potters Bar	242*, 610	B
Brookmans Park	242*, 610	B	Little Heath	242*, 610	B	South Hatfield	242*, 610	A
Cheshunt	242*	B	Luton (serves Luton Station)	610	A	Swanley Bar	242*, 610	B
Cuffley (serves Cuffley Station)	242*	B	Marshalls Heath	610	A	Waltham Cross	242*	B
Harpenden (serves Harpenden Station)	610	A	Marshmoor	242*, 610	A	Wheathampstead	610	A
Hatfield Business Park	610	A	Northaw	242*	B			
Hatfield (Town Centre & The Galleria)	242*, 610	A	Oxlease	242*, 610	A			

**Notes**

Bus route 610 runs Mondays to Saturdays only.  
 For all bus times and days of operation please see bus stop timetables or contact Traveline.  
 # Bus route 610 serves both The Forum (College Lane) and de Havilland campuses.  
 \* Bus route 242 runs a Mondays, Fridays, Sundays & Public Holidays service, only.  
 Direct trains operate to this destination from this station.

<b>Taxis</b>	Welham Green Station has no taxi rank or cab office. Advance booking is essential, please consider using the following local operators: (Inclusion of this number doesn't represent any endorsement of the taxi firm)	<b>Welham Green Taxis</b> 07590 253 940	<b>AAA Taxis</b> 01707 888 888	<b>24/7 Hatfield</b> 01707 538 025

Further information about all onward travel				
<b>Local Cycle Info</b> welhat.gov.uk For more information about cycle routes.	<b>National Cycle Info</b> sustrans.org.uk Sustrans is the UK's leading sustainable transport charity.	<b>Bus Times</b> See timetable displays at bus stops. www.traveline.info 0871 200 22 33 call cost 13p per minute plus your phone company's access charge	<b>NextBuses</b> Find the bus times for your stop. Search for a bus stop by entering a postcode, street & town or a stop name & town.	<b>PlusBus</b> plusbus.info A discount price 'bus pass' that you buy with your train ticket. It gives you unlimited bus travel around your chosen town, on participating buses.

National Rail Enquiries					
<b>Online</b> nationalrail.co.uk	<b>NRE App</b> Free National Rail Enquiries app for iOS and Android	<b>Social Media</b> facebook.com/nationalrailenq @nationalrailenq	<b>Alert Me</b> You can sign up to Alert Me messages on the National Rail Enquiries website where you can receive train and platform notifications directly to your smart phone. nationalrail.co.uk/alertme	<b>Contact Centre</b> 03457 48 49 50 Calls cost no more than calls to geographic numbers (01 or 02) and may be recorded.	<b>PlusBike</b> nationalrail.co.uk/plusbike For more information.

National Rail

Britain's train companies working together

This poster shows details of popular destinations and main, frequent bus routes. Additional services may run, so please check with Traveline or see posters at local bus stops. Whilst considerable care has been taken to ensure the information contained on this poster is correct and accurate, National Rail cannot accept responsibility for any loss or inconvenience caused by any errors or omissions, or for loss, damage, injury or inconvenience relating to the cancellation, alteration, delay or diversion of a service. For any feedback, please e-mail comments@onwardtravelposters.com