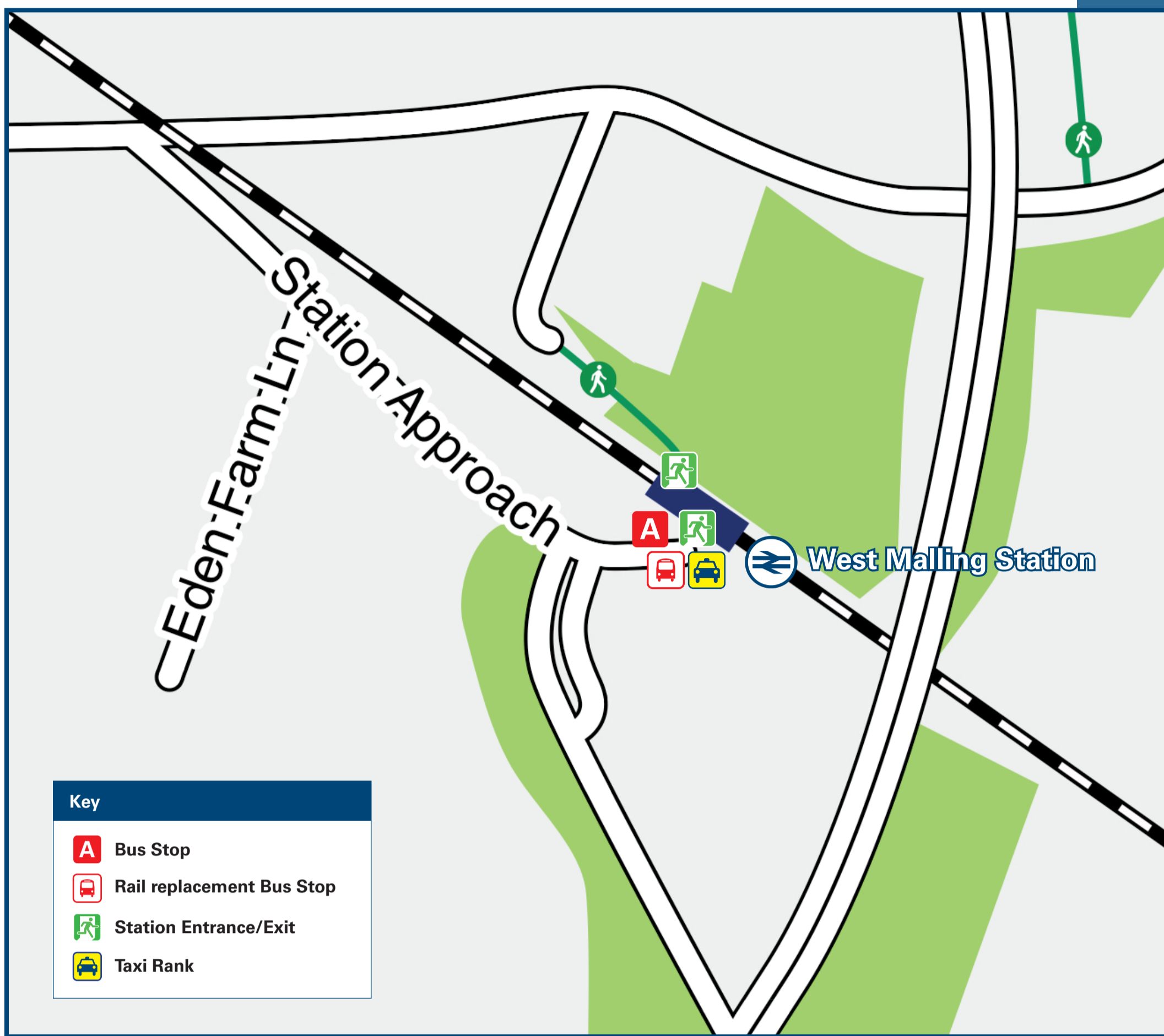




West Malling Station

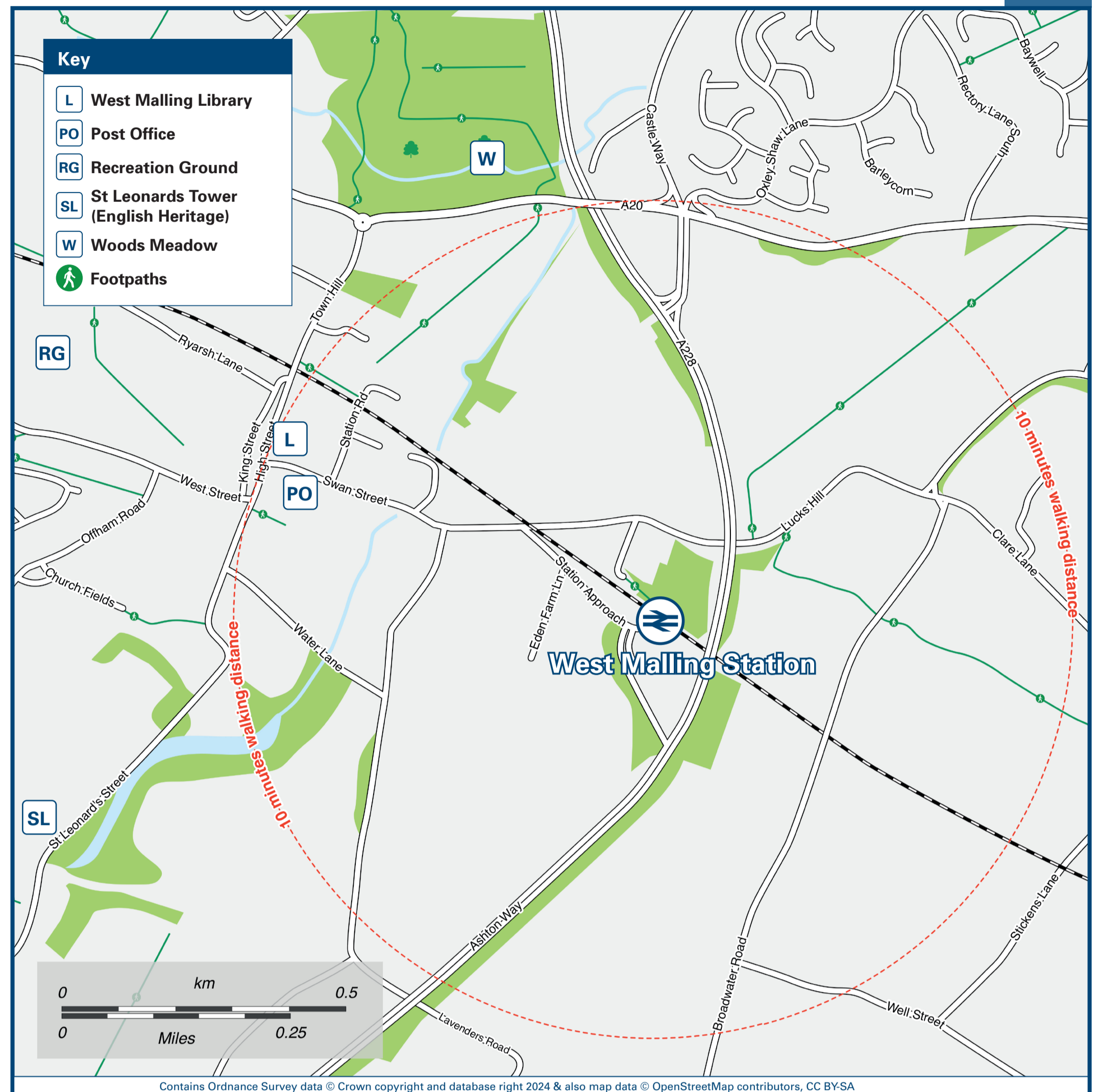
Onward Travel Information

Buses and Taxis



Rail replacement buses depart from bus stop **A** in the station forecourt for Maidstone or Swanley. Rail replacement mini buses will operate between West Malling and East Malling stations.

Local area map



Main destinations by bus

(Data correct at July 2024)

DESTINATION	BUS ROUTES	BUS STOP	DESTINATION	BUS ROUTES	BUS STOP	DESTINATION	BUS ROUTES	BUS STOP
Chatham	151	A	Kings Hill (Silver Ball Roundabout)	123*, 151#	A	Sundridge Hill	151	A
Cuxton	151	A	Leybourne	151	A	West Malling (High Street) @	151	A
Halling Station	151	A	Manor Park Country Park	151#	A			
Ham Hill	151	A	Rochester	151	A			
Kings Hill (ASDA)	151#	A	Snodland	151	A			
Kings Hill (Kimberley-Clark Headquarters)	123*, 151#	A	Strood	151	A			

Notes

Bus route 151 operates daily, Mondays to Sundays including Bank Holidays.

For further information contact Nu-Venture Coaches (for bus routes 123 & 151) www.nu-venture.co.uk/contact or call 01622 882 288 or call Traveline on 0871 200 22 33.

It's a 10 to 15 minutes walk from this station to West Malling High Street via Station Approach and Swan Street, see Local area map.

* Bus route 123 operates 1 early morning journey Mondays to Fridays only.

Bus route 151 serves Kings Hill on Mondays to Saturdays only.

@ Additional bus services operate from West Malling Town Centre, High Street, contact Traveline for details.

Taxis

West Malling Station is served by a taxi rank and a cab office. Check availability before travelling, and pre-book if necessary. Please consider using the following local operators: (Inclusion of this number doesn't represent any endorsement of the taxi firm)

West Malling Taxis
01732 845 535

Kings Hill Cars
01622 791 500

United Cars (Kings Hill)
01732 730 000

Further information about all onward travel

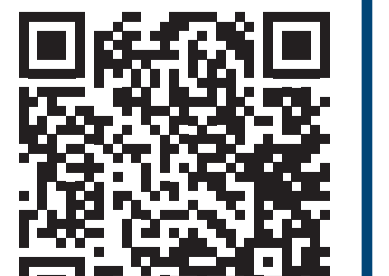
Local Cycle Info tmbc.gov.uk For more information about cycle routes.	National Cycle Info sustrans.org.uk Sustrans is the UK's leading sustainable transport charity.	Bus Times See timetable displays at bus stops. www.traveline.info 0871 200 22 33 call cost 13p per minute plus your phone company's access charge	NextBuses Find the bus times for your stop. Search for a bus stop by entering a postcode, street & town or a stop name & town.	PlusBus plusbus.info A discount price 'bus pass' that you buy with your train ticket. It gives you unlimited bus travel around your chosen town, on participating buses.
---	---	--	---	---

National Rail Enquiries

Online nationalrail.co.uk	NRE App Free National Rail Enquiries app for iOS and Android	Social Media facebook.com/nationalrailenq @nationalrailenq	Alert Me You can sign up to Alert Me messages on the National Rail Enquiries website where you can receive train and platform notifications directly to your smart phone. nationalrail.co.uk/alertme	Contact Centre 03457 48 49 50 Calls cost no more than calls to geographic numbers (01 or 02) and may be recorded.	PlusBike nationalrail.co.uk/plusbike For more information.
---	--	---	---	--	--



National Rail
Britain's train companies working together



This poster shows details of popular destinations and main, frequent bus routes. Additional services may run, so please check with Traveline or see posters at local bus stops. Whilst considerable care has been taken to ensure the information contained on this poster is correct and accurate, National Rail cannot accept responsibility for any loss or inconvenience caused by any errors or omissions, or for loss, damage, injury or inconvenience relating to the cancellation, alteration, delay or diversion of a service. For any feedback, please e-mail comments@onwardtravelposters.com

Scan this code with your mobile for full station information.