



Wickford Station

Onward Travel Information

Buses and Taxis



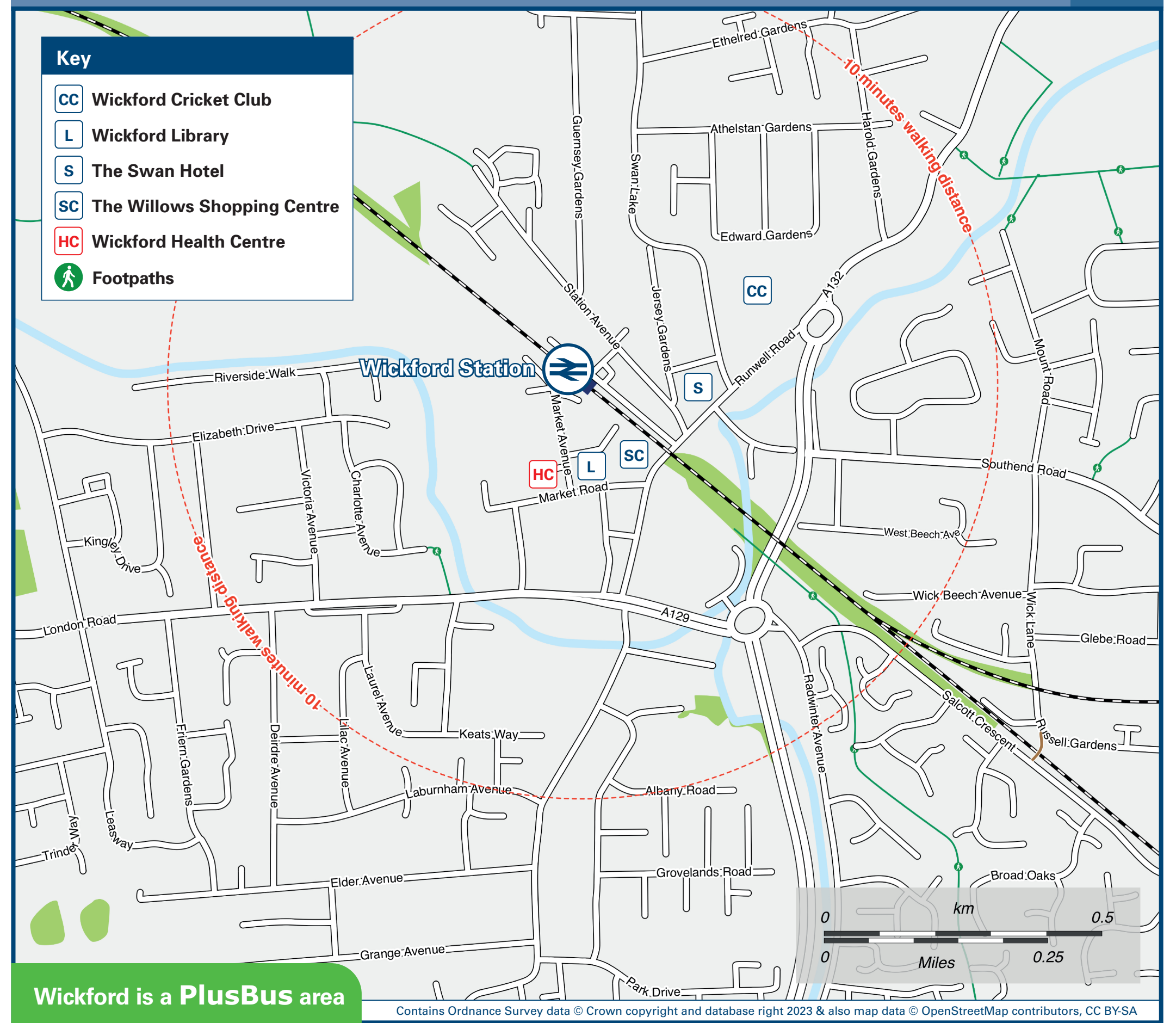
Key

- A** Bus Stop
- RB** Rail replacement Bus Stop
- GE** Station Entrance/Exit
- TR** Taxi Rank

Cyclepark Plus is at this station
Where you can secure your bike using a key fob.

Substitute bus services call at the bus stop at station entrance.

Local area map



Wickford is a PlusBus area

PlusBus is a discount price 'bus pass' that you buy with your train ticket. It gives you unlimited bus travel around your chosen town, on participating buses. Visit www.plusbus.info

Main destinations by bus

(Data correct at August 2023)

DESTINATION	BUS ROUTES	BUS STOP
Barleylands	12, 251#	B
Basildon (Hospital)	10	A
Basildon (Town Centre/Bus Station)	10, X10 25, 94, 94A, 94B	A B
Billericay	12, 251#	B
Brentwood	251#	B
Brock Hill	10, 13, 13A, 14	A
Broomfield Hospital	X10	A
Chelmsford (Town Centre/Bus Station)	13, 13A, 14, X10	A
Crays Hill	10	A
Downham	12, 251#	B
Downham	10, 13A, 14	A
Eastwood	25	C
Galleywood	13, 13A, 14	A
Great Burstead	12, 251#	B
Hutton	251#	B
Leigh-on-Sea	25	C
Noak Bridge	10	A
Prittlewell	25	C
Ramsden Bellhouse	10	A

DESTINATION	BUS ROUTES	BUS STOP
Ramsden Heath	10, 14	A
Rawreth	25	C
Rayleigh	25	C
Rettendon	8*, 13, 13A, X10 94, 94A, 94B	A C
Runwell (Runwell Road)	8*, X10 94, 94A	A C
Runwell (St Lukes Park)	X10	A
Runwell (Wantz Corner)	10, 13, 13A, 14	A
Shenfield	251#	B
Shotgate	10 10, 25, 94B	A C
South Hanningfield	13, 13A	A
South Woodham Ferrers	94, 94A, 94B	C
Southend-on-Sea	25	C
Southend Hospital	25	C
Stansted Airport	X10	A
Stock	14	A
Tile Kiln	13, 13A, 14	A
Warley	251#	B

DESTINATION	BUS ROUTES	BUS STOP
West Hanningfield	13, 13A, 14	A
Wickford (Beauchamps Drive, for Beauchamps High School)	9** 94B	A A
Wickford (The Wick/Tesco Store)	13, 13A, 14 94, 94A, 94B	A B
Wickford (Twinstead)	13, 13A, 14 94, 94A, 94B	A B

Notes

- **PlusBus** destination, please see below for details.
- Bus routes 10, 12, 13, 13A, 14 and 94 operate Mondays to Saturdays only.
- Bus routes 25 and X10 operate daily.
- Bus routes 94A and 94B operate Mondays to Fridays only.
- For bus times and other bus service enquiries, please contact Traveline on 0871 200 22 33 or contact the bus operator (see below):
First Essex (for bus routes 13, 13A, 14, 25, 251 & X10) call 0345 646 0707, Heddingham (for bus routes 94, 94A & 94B) call 013301 020 801, Arrow Taxi (for bus route 12) call 01621 855 111 or Vectare (for bus routes 8, 9 & 10) call 0115 777 3187.
- # Bus route 251 operates Sundays and Bank Holidays only.
- * Bus route 8 runs limited early morning and evening journeys Mondays to Saturdays only.
- ** Bus route 9 runs limited early morning and evening journeys Mondays to Fridays only.
- Direct trains operate to this destination from this station.

Taxis

Wickford Station is served by a taxi rank or cab office. Check availability before travelling, and pre-book if necessary. Please consider using the following local operators: (Inclusion of this number doesn't represent any endorsement of the taxi firm)

Allied Taxis 01268 575 757	Wickford Taxis 01268 272 727	Value Cars 01268 525 252
--------------------------------------	--	------------------------------------

Further information about all onward travel

Local Cycle Info basildon.gov.uk For more information about cycle routes.	National Cycle Info sustrans.org.uk Sustrans is the UK's leading sustainable transport charity.	Bus Times See timetable displays at bus stops. www.traveline.info 0871 200 22 33 call cost 13p per minute plus your phone company's access charge	NextBuses Find the bus times for your stop. Search for a bus stop by entering a postcode, street & town or a stop name & town.	PlusBus plusbus.info A discount price 'bus pass' that you buy with your train ticket. It gives you unlimited bus travel around your chosen town, on participating buses.
---	---	--	---	---

National Rail Enquiries

Online nationalrail.co.uk	NRE App Free National Rail Enquiries app for iOS and Android	Social Media facebook.com/nationalrailenq @nationalrailenq	Alert Me You can sign up to Alert Me messages on the National Rail Enquiries website where you can receive train and platform notifications directly to your smart phone. nationalrail.co.uk/alertme	Contact Centre 03457 48 49 50 Calls cost no more than calls to geographic numbers (01 or 02) and may be recorded.	PlusBike nationalrail.co.uk/plusbike For more information.
---	--	---	---	--	--



National Rail
Britain's train companies working together



This poster shows details of popular destinations and main, frequent bus routes. Additional services may run, so please check with Traveline or see posters at local bus stops. Whilst considerable care has been taken to ensure the information contained on this poster is correct and accurate, National Rail cannot accept responsibility for any loss or inconvenience caused by any errors or omissions, or for loss, damage, injury or inconvenience relating to the cancellation, alteration, delay or diversion of a service. For any feedback, please e-mail comments@onwardtravelposters.com

Scan this code with your mobile for full station information.