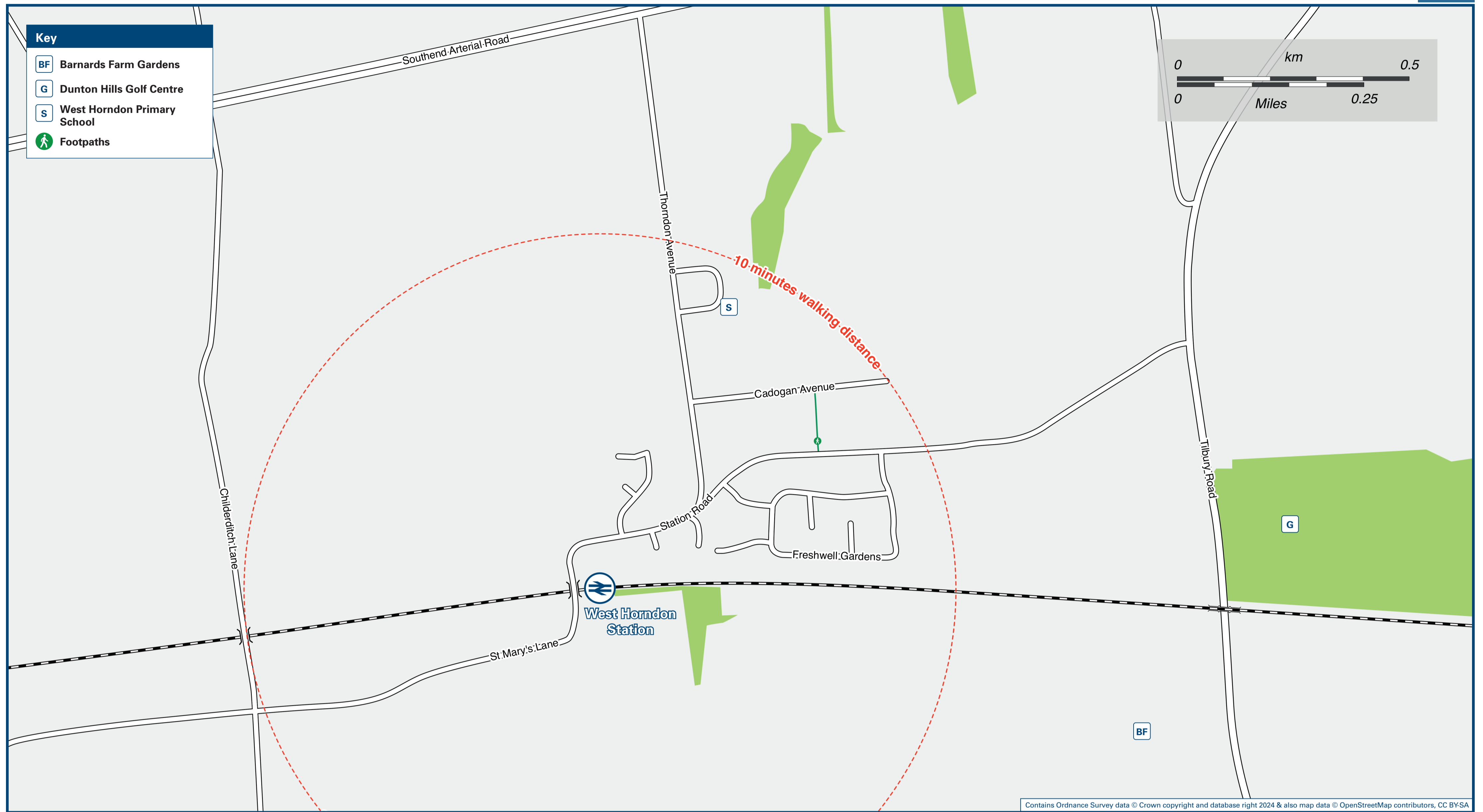




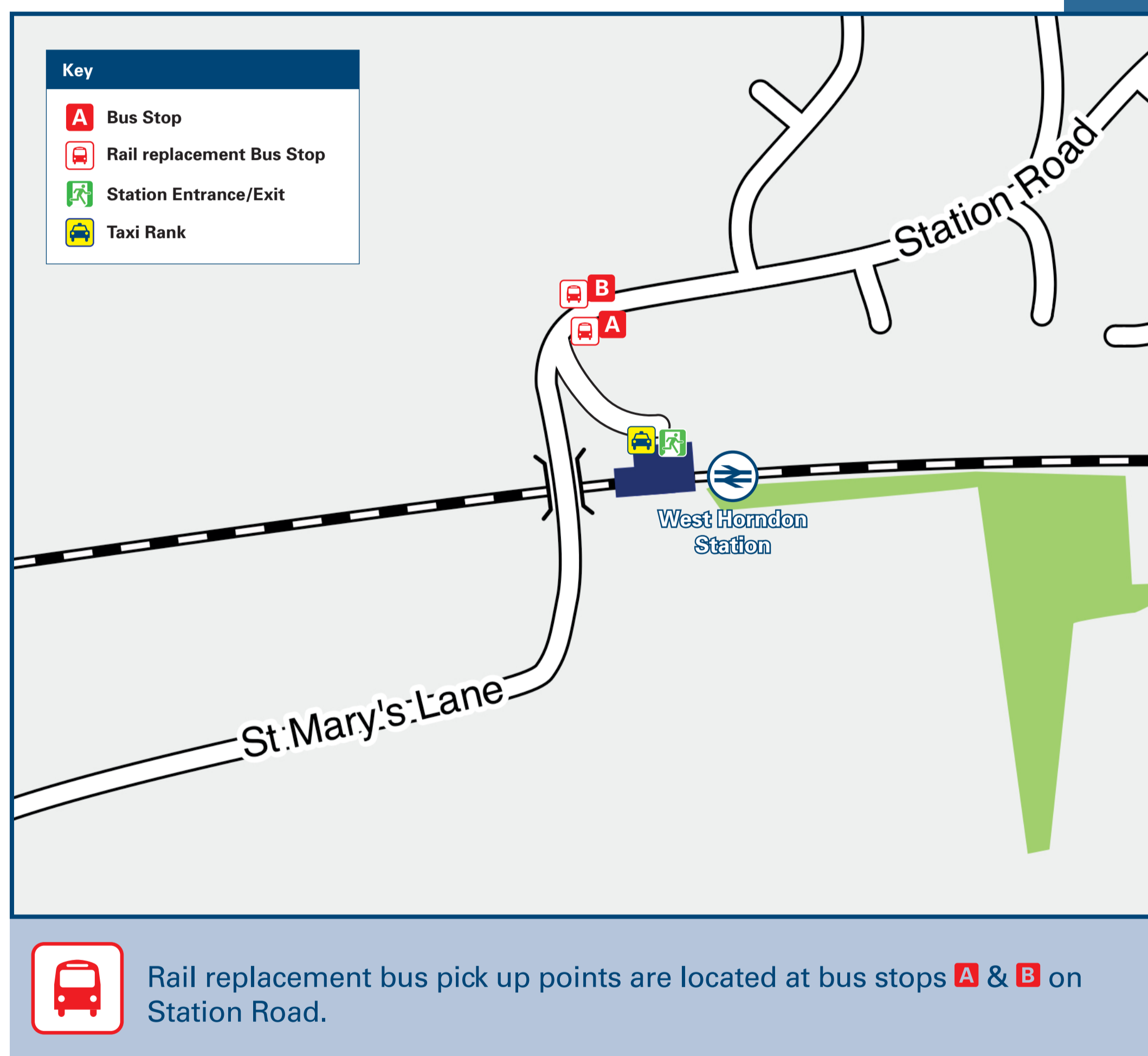
# West Horndon Station

# Onward Travel Information

## Local area map



## Buses and Taxis



## Main destinations by bus

(Data correct at June 2024)

DESTINATION	BUS ROUTES	BUS STOP
Brentwood (Town Centre)	565	B
Brentwood Railway Station	565	B
Bulphan	565	A
East Horndon	565	B
Herongate	565	B
Ingrave	565	B

**Notes**

- Bus route 565 runs a limited Mondays to Saturdays service only. No Sunday services.
- Change here for connecting National Rail services.

## Taxis

West Horndon Station is served by a taxi rank or a cab office. Check availability before travelling, and pre-book if necessary. Please consider using the following local operators: (Inclusion of this number doesn't represent any endorsement of the taxi firm)

**Treble Twenty Cars (Brentwood)**  
01277 202 020

**Hey Cab (Basildon)**  
01268 858 858

**Star Mini Cabs (Hornchurch)**  
01708 722 227

## Further information about all onward travel

<b>Local Cycle Info</b> <a href="http://brentwood.gov.uk">brentwood.gov.uk</a> <small>For more information about cycle routes.</small>	<b>National Cycle Info</b> <a href="http://sustrans.org.uk">sustrans.org.uk</a> <small>Sustrans is the UK's leading sustainable transport charity.</small>	<b>Bus Times</b> <small>See timetable displays at bus stops.</small> <a href="http://www.traveline.info">www.traveline.info</a> <b>0871 200 22 33</b> <small>calls cost 13p per minute plus your phone company's access charge</small>	<b>NextBuses</b> <small>Find the bus times for your stop. Search for a bus stop by entering a postcode, street &amp; town or a stop name &amp; town.</small>	<b>PlusBus</b> <a href="http://plusbus.info">plusbus.info</a> <small>A discount price 'bus pass' that you buy with your train ticket. It gives you unlimited bus travel around your chosen town, on participating buses.</small>
--	--	--	---	--

## National Rail Enquiries

<b>Online</b> <a href="http://nationalrail.co.uk">nationalrail.co.uk</a>	<b>NRE App</b> <b>Free National Rail Enquiries app for iOS and Android</b>	<b>Social Media</b> <a href="https://facebook.com/nationalrailenq">facebook.com/nationalrailenq</a> @nationalrailenq	<b>Alert Me</b> <small>You can sign up to Alert Me messages on the National Rail Enquiries website where you can receive train and platform notifications directly to your smart phone.</small> <a href="http://nationalrail.co.uk/alertme">nationalrail.co.uk/alertme</a>	<b>Contact Centre</b> <b>03457 48 49 50</b> <small>Calls cost no more than calls to geographic numbers (01 or 02) and may be recorded.</small>	<b>PlusBike</b> <a href="http://nationalrail.co.uk/plusbike">nationalrail.co.uk/plusbike</a> <small>For more information.</small>
---	---	--	--	--	---



**National Rail**  
Britain's train companies working together



This poster shows details of popular destinations and main, frequent bus routes. Additional services may run, so please check with Traveline or see posters at local bus stops. Whilst considerable care has been taken to ensure the information contained on this poster is correct and accurate, National Rail cannot accept responsibility for any loss or inconvenience caused by any errors or omissions, or for loss, damage, injury or inconvenience relating to the cancellation, alteration, delay or diversion of a service. For any feedback, please e-mail [comments@onwardtravelposters.com](mailto:comments@onwardtravelposters.com)

Scan this code with your mobile for full station information.