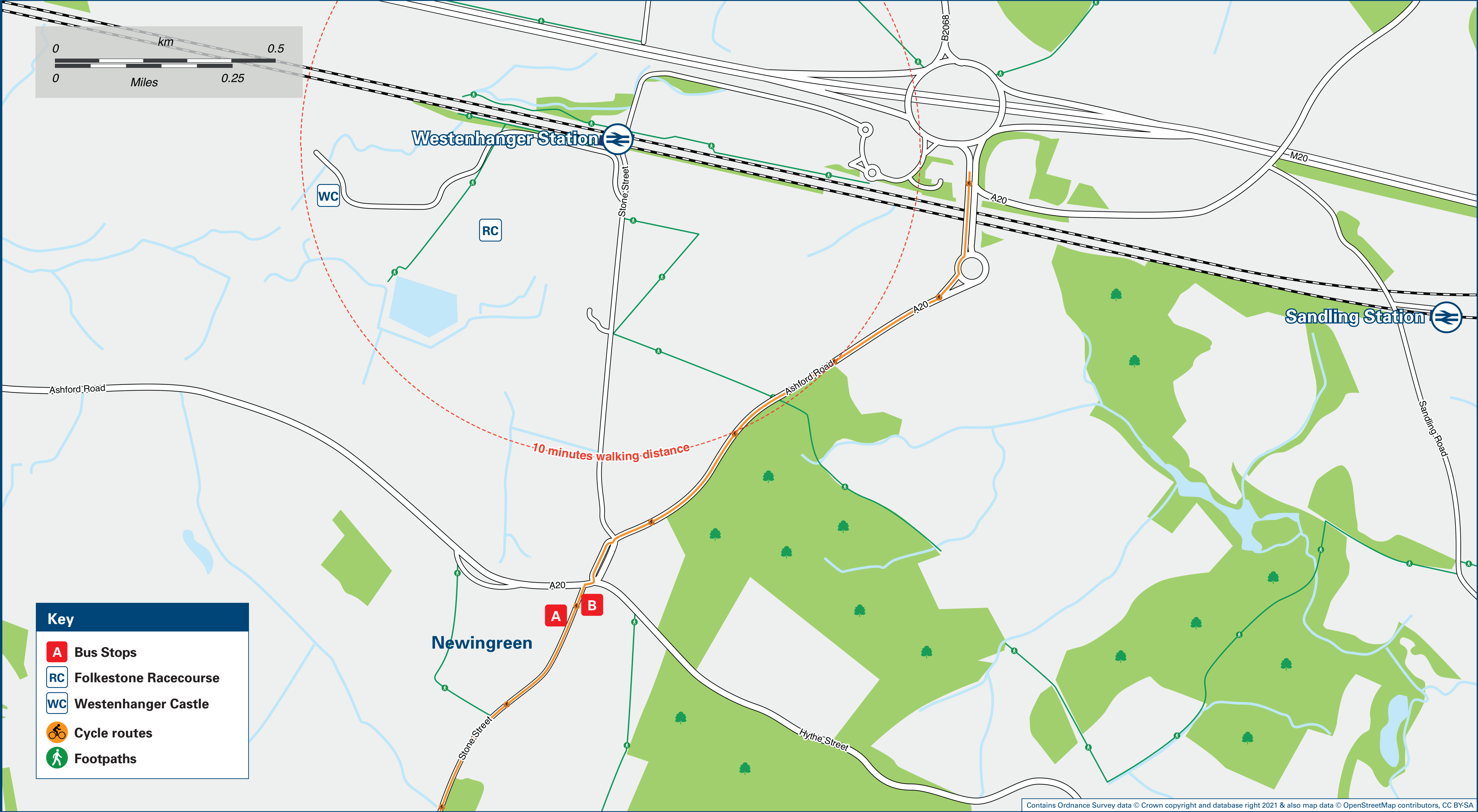




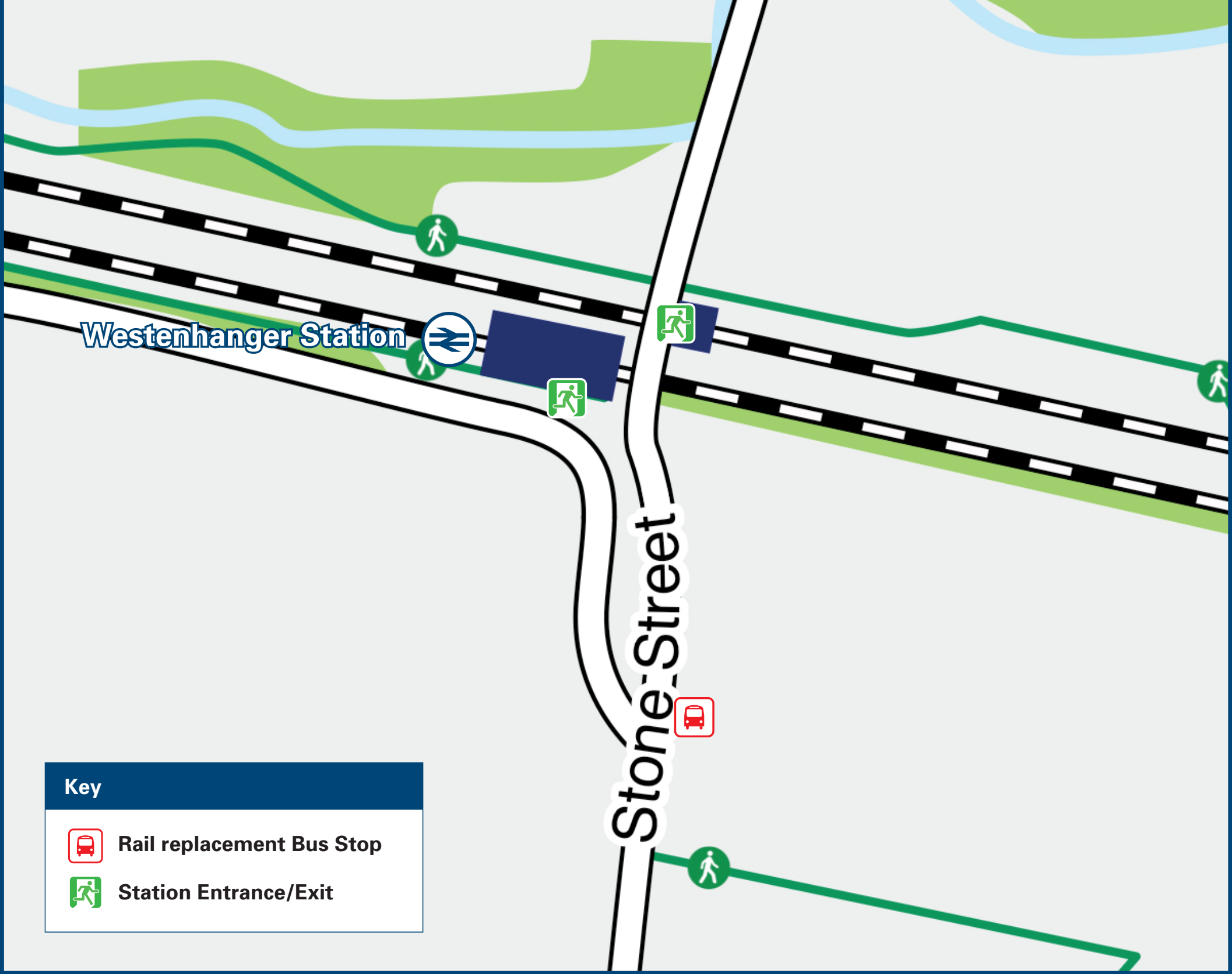
Westenhanger Station

Onward Travel Information

Local area map



Station Map



For rail replacement buses, all directions: exit the station from platform one onto Station Approach. Rail Replacement buses stop at the top of Stone Street.

Information

(Data correct at August 2023)

THERE ARE NO REGULAR BUS SERVICES SERVING WESTENHANGER RAILWAY STATION

The nearest bus stops to Westenhanger station are located at Newingreen, a 15 minutes walk from this station, see Local area map:

From bus stop **A** to Sandling station, Hythe and Folkestone and from bus stop **B** to Sellindge, Brabourne Lees and Ashford

Bus routes 10 and 10A operate Mondays to Saturdays only

For more information contact Stagecoach South East on 0345 241 8000 or contact Traveline on 0871 200 22 33.

Westenhanger Station has no taxi rank or cab office. Local taxis are available as listed below: (Inclusion of this number doesn't represent any endorsement of the taxi firm)

Folkestone Taxi Co
01303 252 000

Premier Taxis
01303 270 000

AFM Cars (Ashford)
01233 333 500

Further information about all onward travel

Local Cycle Info	National Cycle Info	Bus Times	NextBuses	PlusBus
shepway.gov.uk For more information about cycle routes.	sustrans.org.uk Sustrans is the UK's leading sustainable transport charity.	See timetable displays at bus stops. www.traveline.info 0871 200 22 33 calls cost 11p per minute plus your phone company's access charge	Find the bus times for your stop. Search for a bus stop by entering a postcode, street & town or a stop name & town.	plusbus.info A discount price 'bus pass' that you buy with your train ticket. It gives you unlimited bus travel around your chosen town, on participating buses.

National Rail Enquiries

Online	NRE App	Social Media	Alert Me	Contact Centre	PlusBike
nationalrail.co.uk	Free National Rail Enquiries app for iOS and Android	facebook.com/nationalrailenq @nationalrailenq	You can sign up to Alert Me messages on the National Rail Enquiries website where you can receive train and platform notifications directly to your smart phone. nationalrail.co.uk/alertme	03457 48 49 50 Calls cost no more than calls to geographic numbers (01 or 02) and may be recorded.	nationalrail.co.uk/plusbike For more information.

southeastern



National Rail
Britain's train companies working together



Whilst considerable care has been taken to ensure the information contained on this poster is correct and accurate, National Rail cannot accept responsibility for any loss or inconvenience caused by any errors or omissions, or for loss, damage, injury or inconvenience caused.

Scan this code with your mobile for full station information.