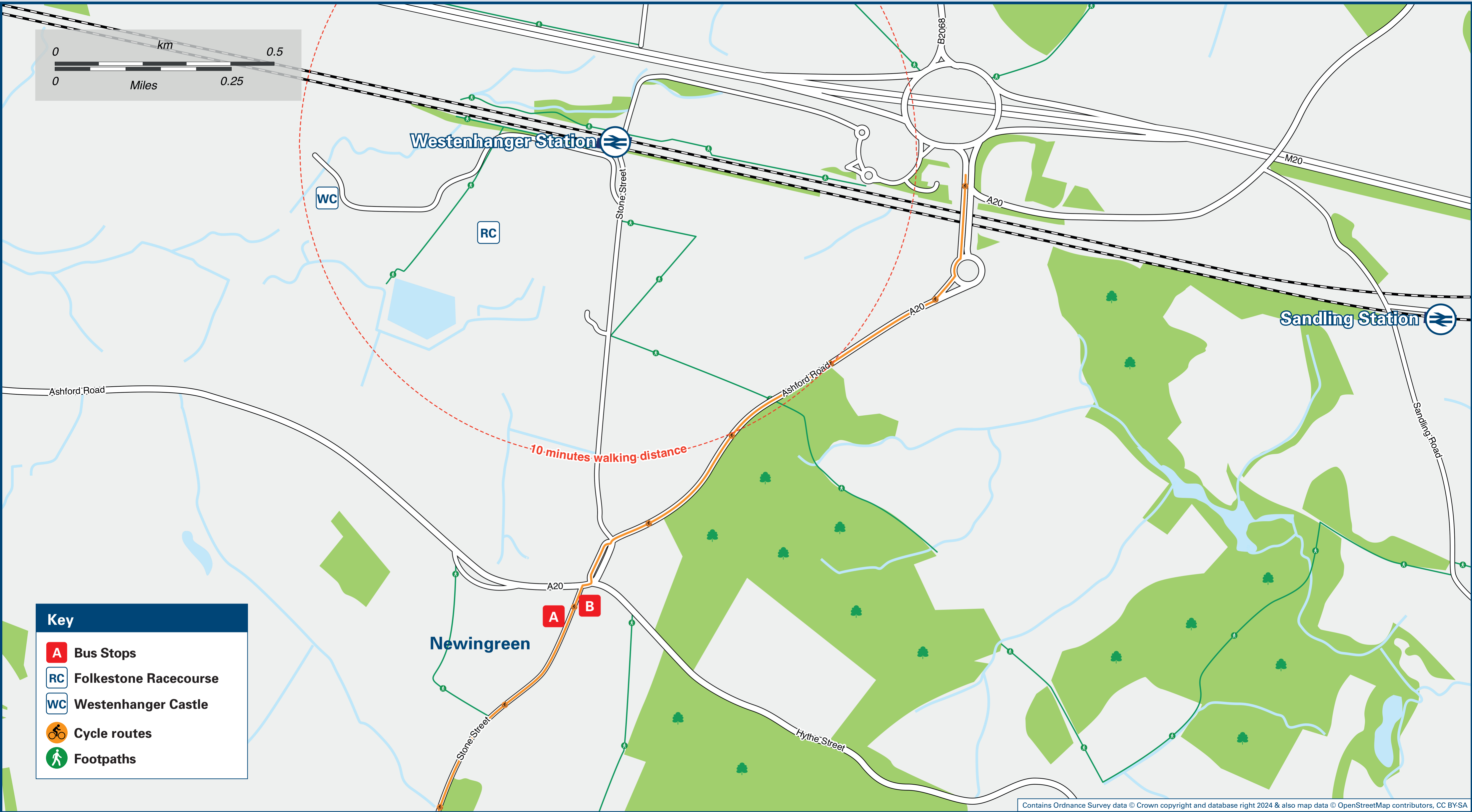




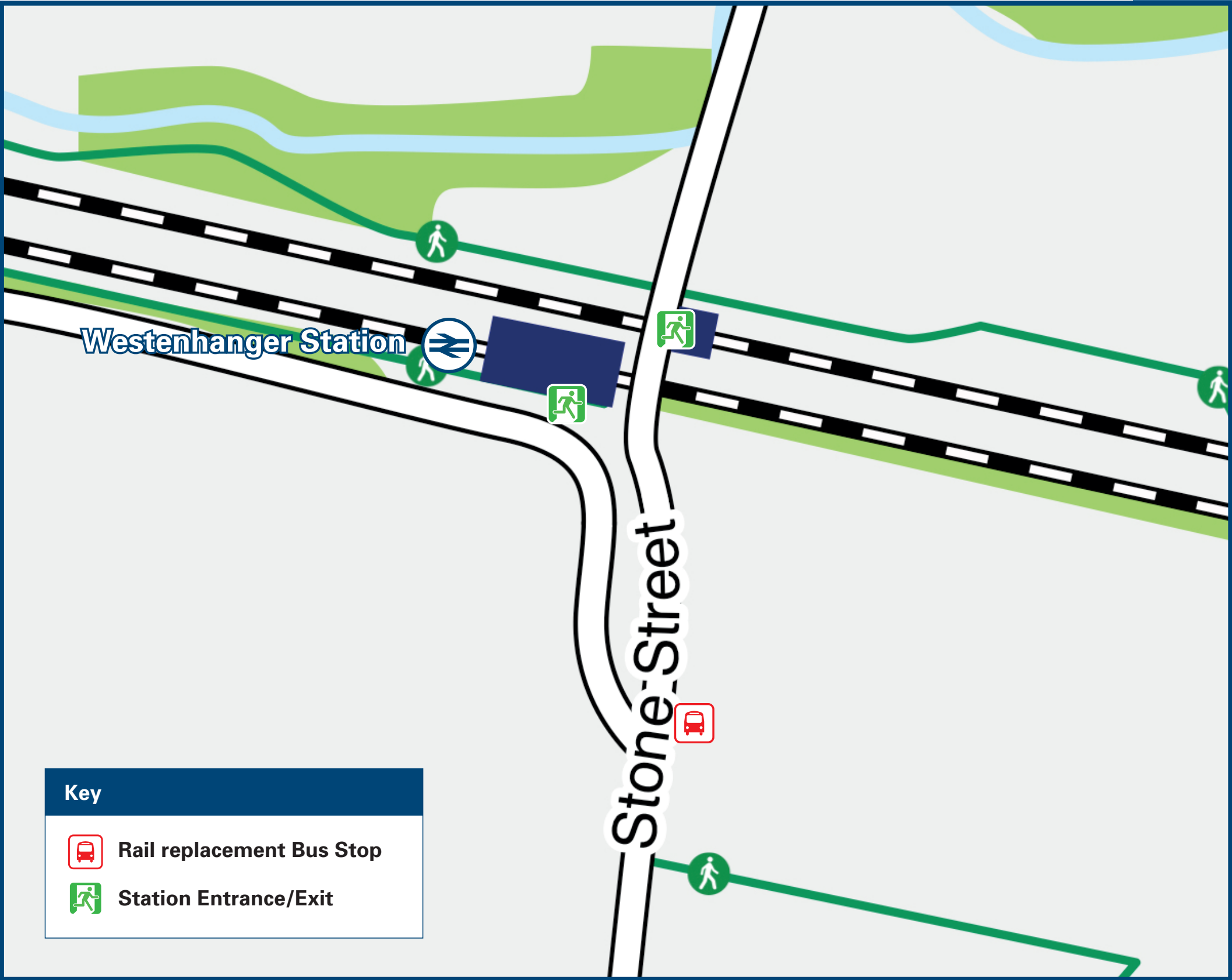
Westenhanger Station

Onward Travel Information

Local area map



Station Map



Rail replacement mini buses will usually depart from outside the station entrance to and from Sandling station; Full size buses will depart from the top of Stone Street on Ashford Road towards Ashford or Dover.

Information

(Data correct at August 2025)

THERE ARE NO REGULAR BUS SERVICES SERVING WESTENHANGER RAILWAY STATION

The nearest bus stops to Westenhanger station are located at Newingreen, a 16-20 minutes walk from this station, see Local area map:

Bus routes 10 and 10A run Mondays to Saturdays only from bus stop **A** to Sandling station, Hythe and Folkestone.

Bus route 10 runs on Mondays to Saturdays only from bus stop **B** to Lympe, Sellindge, Brabourne Lees and Ashford.

For bus times and days of operation please contact Traveline on www.traveline.info or call: 0871 200 22 33

Westenhanger Station has no taxi rank or cab office. Local taxis are available as listed below: (Inclusion of this number doesn't represent any endorsement of the taxi firm)

Folkestone Taxi Co 01303 252 000	Premier Taxis 01303 270 000	Channel Cars Folkestone 01303 252 252
--	---------------------------------------	---

Further information about all onward travel

Local Cycle Info	National Cycle Info	Bus Times	PlusBus
shepway.gov.uk For more information about cycle routes.	sustrans.org.uk Sustrans is the UK's leading sustainable transport charity.	See timetable displays at bus stops. www.traveline.info 0871 200 22 33 calls cost 11p per minute plus your phone company's access charge	plusbus.info PlusBus is a discount price 'bus pass' that you buy with your train ticket. It gives you unlimited bus travel around your chosen town, on participating buses. Visit www.plusbus.info

National Rail Enquiries

Online	NRE App	Social Media	Alert Me	Contact Centre	PlusBike
nationalrail.co.uk	Free National Rail Enquiries app for iOS and Android	facebook.com/nationalrailenq @nationalrailenq	You can sign up to Alert Me messages on the National Rail Enquiries website where you can receive train and platform notifications directly to your smart phone. nationalrail.co.uk/alertme	03457 48 49 50 Calls cost no more than calls to geographic numbers (01 or 02) and may be recorded.	nationalrail.co.uk/plusbike For more information.

southeastern



National Rail
Britain's train companies working together



Whilst considerable care has been taken to ensure the information contained on this poster is correct and accurate, National Rail cannot accept responsibility for any loss or inconvenience caused by any errors or omissions, or for loss, damage, injury or inconvenience caused. For any feedback, please e-mail comments@onwardtravelposters.com

Scan this code with your mobile for full station information.