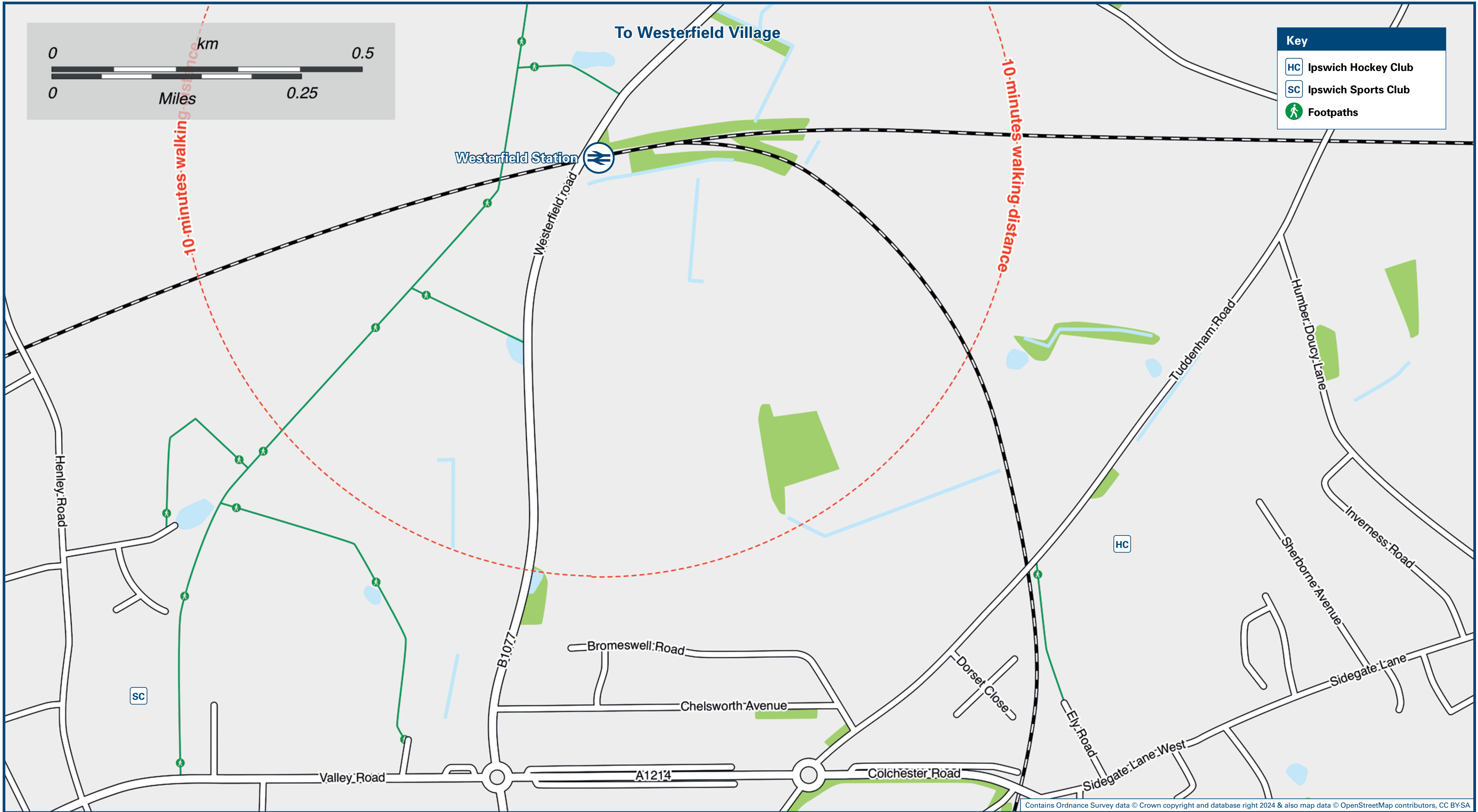




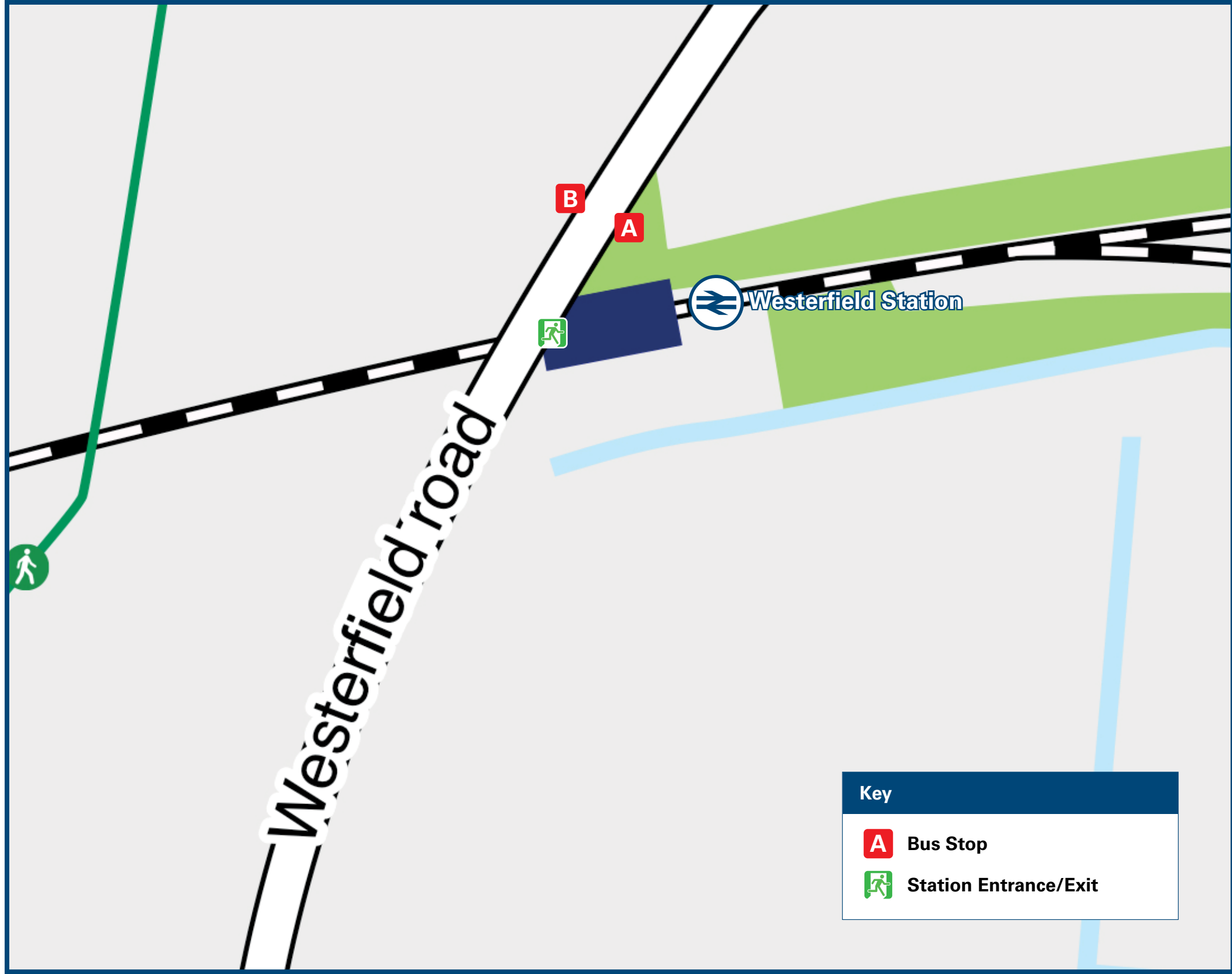
Westerfield Station

Onward Travel Information

Local area map



Buses



Rail replacement bus services do not serve this station. Customers are advised to use Ipswich station for rail replacement services.

Main destinations by bus

DESTINATION	BUS ROUTES	BUS STOP
Ashbocking	118*, 119	B
Ashfield cum Thorpe	119	B
Brandeston	118	B
Cretingham	118	B
Earl Soham	119	B
Framlingham	118, 119	B
Framsden	119	B
Helmingham	118*, 119	B
Ipswich Town Centre	118, 119	A
Kettleburgh	118	B
Otley Village & College	118	B
Saxtead Green	119	B
Swilland	118, 119	B
Witnesham	118, 119	B

Notes

Bus routes 118 & 119 operate limited Mondays to Saturdays services. No service on Sundays or Bank Holidays.

Direct trains operates to Ipswich from this Station

* Limited journeys to this destination.

Taxis

Westerfield Station has no taxi rank or cab office. Advance booking is essential, please consider using the following local operators: (Inclusion of this number doesn't represent any endorsement of the taxi firm)

Hawk Express Cabs
01473 222 222

Cabs Smart
01473 252 525

Quick Cab
01473 222 248

Further information about all onward travel

Local Cycle Info	National Cycle Info	Bus Times	NextBuses	PlusBus
www.suffolконboard.com/cycle For more information about cycle routes.	sustrans.org.uk Sustrans is the UK's leading sustainable transport charity.	See timetable displays at bus stops. www.traveline.info 0871 200 22 33 calls cost 15p per minute plus your phone company's access charge	 Find the bus times for your stop. Search for a bus stop by entering a postcode, street & town or a stop name & town.	 plusbus.info A discount price 'bus pass' that you buy with your train ticket. It gives you unlimited bus travel around your chosen town, on participating buses.

National Rail Enquiries

Online	NRE App	Social Media	Alert Me	Contact Centre	PlusBike
nationalrail.co.uk	Free National Rail Enquiries app for iOS and Android	facebook.com/nationalrailenq @nationalrailenq	You can sign up to Alert Me messages on the National Rail Enquiries website where you can receive train and platform notifications directly to your smart phone. nationalrail.co.uk/alertme	03457 48 49 50 Calls cost no more than calls to geographic numbers (01 or 02) and may be recorded.	nationalrail.co.uk/plusbike For more information.

greateranglia



National Rail
Britain's train companies working together

