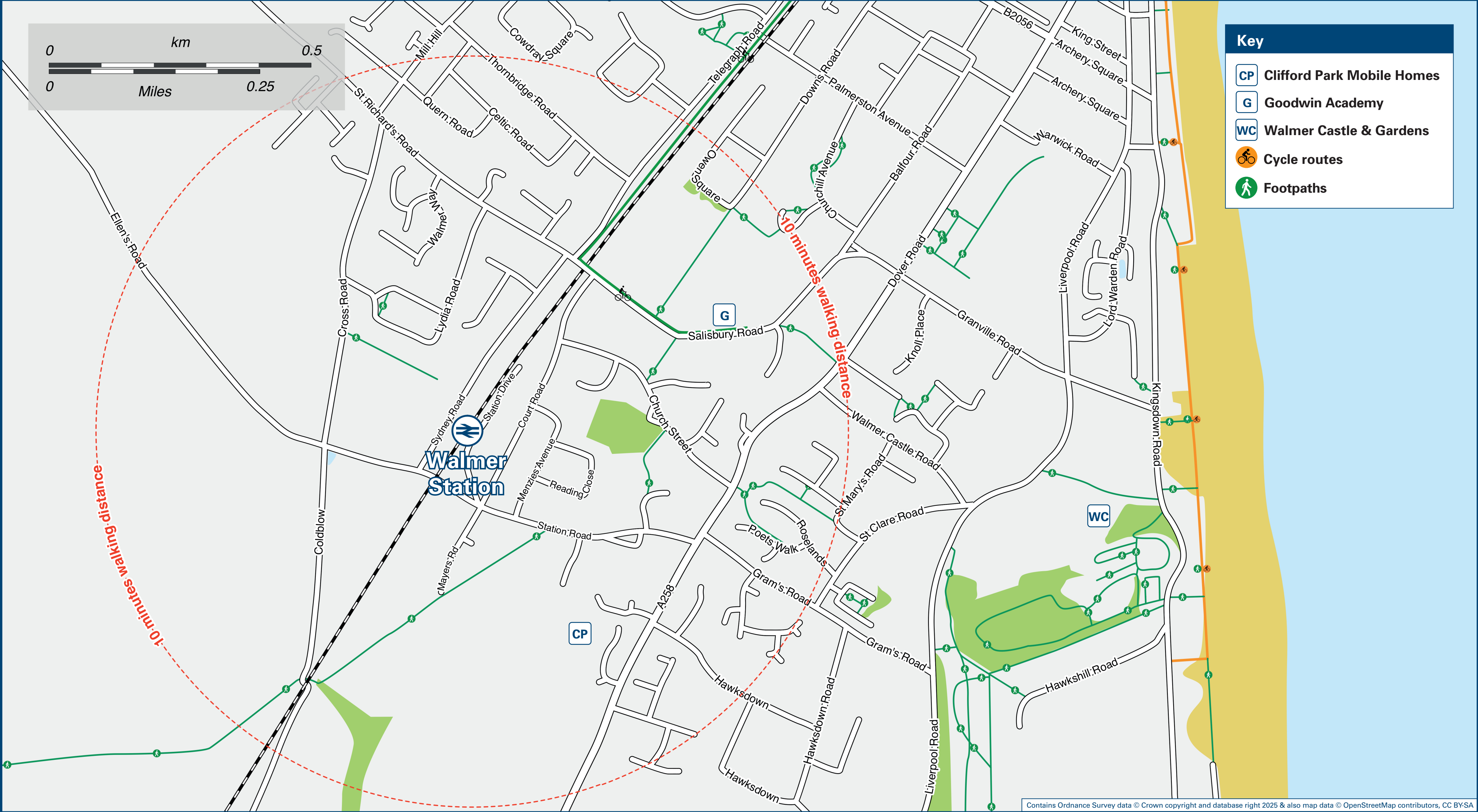




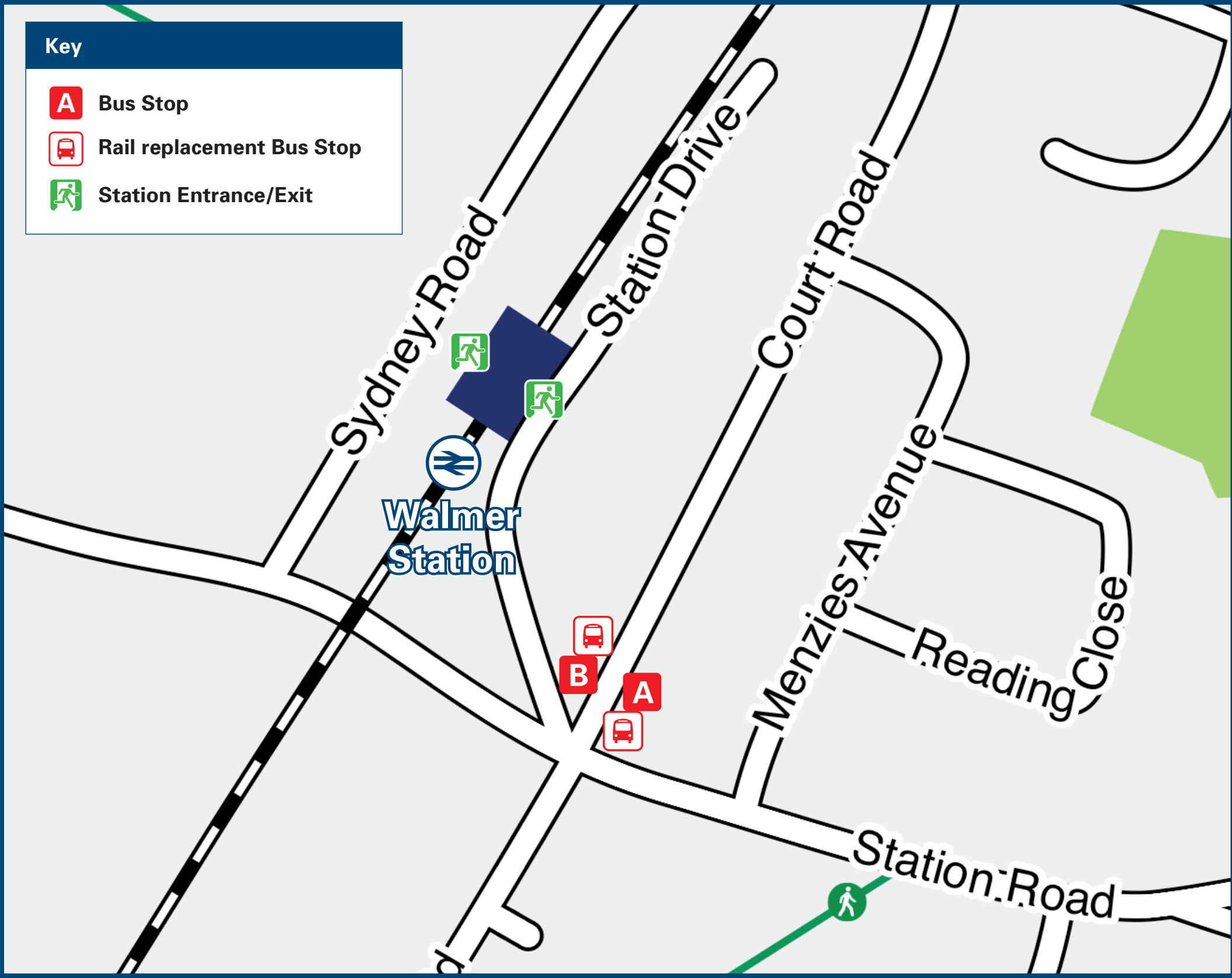
Walmer Station

Onward Travel Information

Local area map



Buses



Rail replacement buses depart from bus stops at the bottom of Station Drive on Court Road, towards Dover from bus stop **A** and towards Deal from bus stop **B**.

Main destinations by bus

(Data correct at August 2025)

DESTINATION	BUS ROUTES	BUS STOP
Betteshanger	81	B
Burgess Green	81	B
Deal (South Street, Town Centre)	81	B
Deal (The Strand, Deal Castle)	81	B
Deal (Victoria Hospital, London Road)	81	B
Dover (Town Centre)	81	A
Eastry	81	B
Finglesham	81	B
Guston	81	A
Mill Hill	81	B
Ringwould	81	A
Sandwich	81#	B
Sholden (New Road/A258)	81	B
Woodnesborough	81	B

Notes

Bus route 81 operates daily.
For bus times and days of operation please contact Traveline on www.traveline.info or call: 0871 200 22 33
 Direct trains operate to this destination from this station.
Bus route 81 continues from Sandwich to Canterbury as bus route 43, same bus no need to change.

Taxis

Walmer Station is served by a taxi rank or cab office. Check availability before travelling, and pre-book if necessary. Please consider using the following local operators: (Inclusion of this number doesn't represent any endorsement of the taxi firm)

Direct Cars
01304 382 222

Ai Castle Cars
01304 362 299

Deal Cars
01304 382 345

Further information about all onward travel

Local Cycle Info

dover.gov.uk

For more information about cycle routes.

National Cycle Info

sustrans.org.uk

Sustrans is the UK's leading sustainable transport charity.

Bus Times

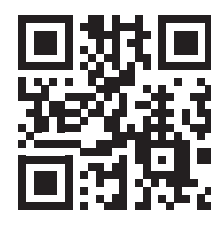
See timetable displays at bus stops.

www.traveline.info
0871 200 22 33
calls cost 15p per minute plus your phone company's access charge

PlusBus

plusbus.info

PlusBus is a discount price 'bus pass' that you buy with your train ticket. It gives you unlimited bus travel around your chosen town, on participating buses. Visit www.plusbus.info



National Rail Enquiries

Online

nationalrail.co.uk

NRE App

Free National Rail Enquiries app for iOS and Android

Social Media

facebook.com/nationalrailenq
 @nationalrailenq

Alert Me

You can sign up to Alert Me messages on the National Rail Enquiries website where you can receive train and platform notifications directly to your smart phone.
nationalrail.co.uk/alertme

Contact Centre

03457 48 49 50

Calls cost no more than calls to geographic numbers (01 or 02) and may be recorded.

PlusBike

nationalrail.co.uk/plusbike

For more information.



southeastern



National Rail
Britain's train companies working together



This poster shows details of popular destinations and main, frequent bus routes. Additional services may run, so please check with Traveline or see posters at local bus stops. Whilst considerable care has been taken to ensure the information contained on this poster is correct and accurate, National Rail cannot accept responsibility for any loss or inconvenience caused by any errors or omissions, or for loss, damage, injury or inconvenience relating to the cancellation, alteration, delay or diversion of a service. For any feedback, please e-mail comments@onwardtravelposters.com

Scan this code with your mobile for full station information.