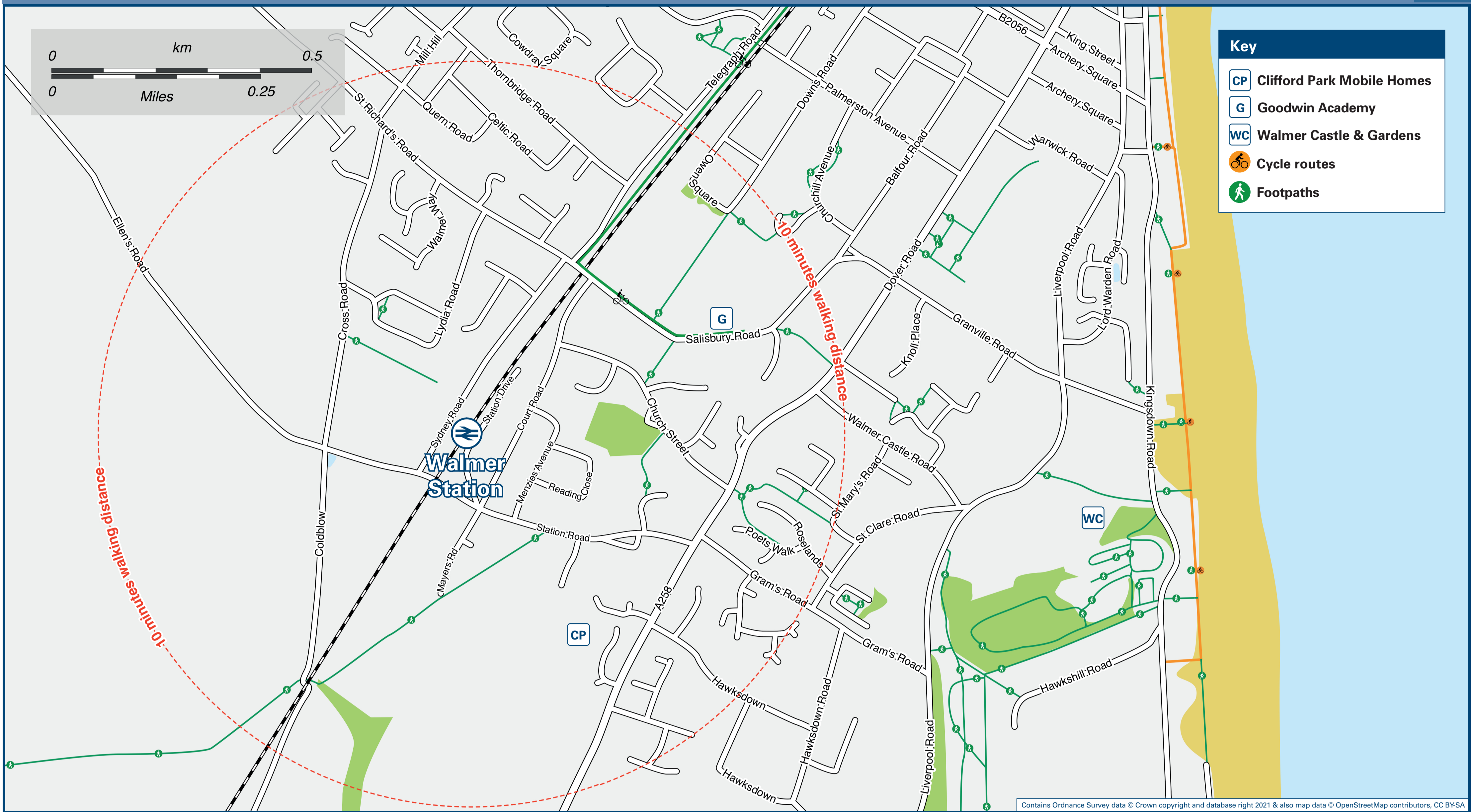




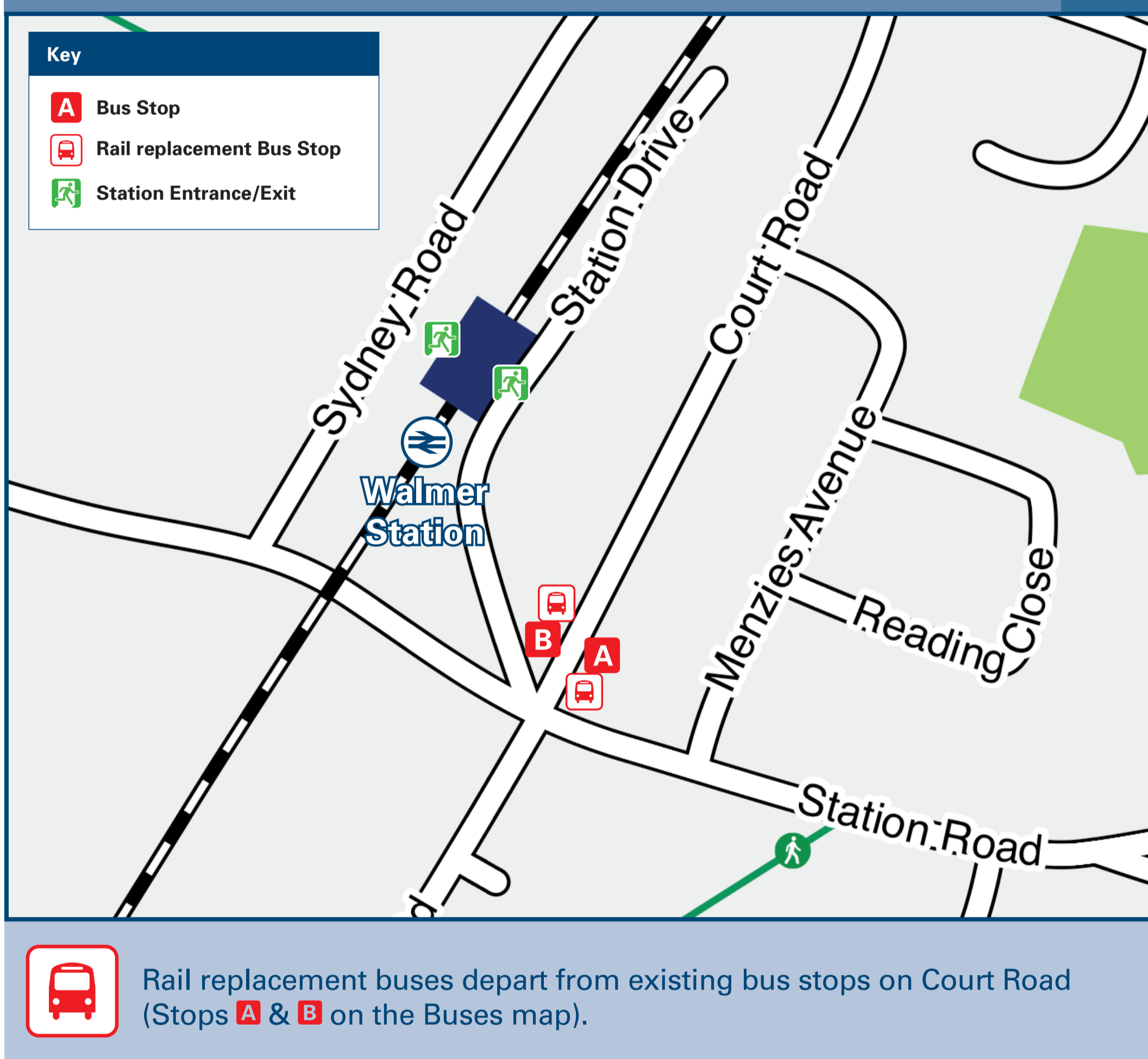
# Walmer Station

# Onward Travel Information

## Local area map



## Buses



## Main destinations by bus

(Data correct at August 2023)

DESTINATION	BUS ROUTES	BUS STOP
Betteshanger	81	B
Burgess Green	81	B
Deal (South Street, Town Centre)	81	B
Deal (The Strand, Deal Castle)	81	B
Deal (Victoria Hospital, London Road)	81	B
Dover (Town Centre)	81	A
Eastry	81	B
Finglesham	81	B
Guston	81	A
Mill Hill	81	B
Ringwould	81	A
Sandwich	81	B
Sholden (New Road/A258)	81	B
Woodnesborough	81	B

### Notes

Bus route 81 operates daily.  
 For further information contact Stagecoach South East (for bus route 81) [www.stagecoachbus.com/help-and-contact](http://www.stagecoachbus.com/help-and-contact) or call 0345 241 8000 or contact Traveline on 0871 200 22 33.  
 Direct trains operate to this destination from this station.

## Taxis

Walmer Station is served by a taxi rank or cab office. Check availability before travelling, and pre-book if necessary. Please consider using the following local operators: (Inclusion of this number doesn't represent any endorsement of the taxi firm)

**Direct Cars**  
01304 382 222

**Ai Castle Cars**  
01304 363 636

**Aspect Private Hire**  
01304 763 646

## Further information about all onward travel

<b>Local Cycle Info</b> <a href="http://dover.gov.uk">dover.gov.uk</a> For more information about cycle routes.	<b>National Cycle Info</b> <a href="http://sustrans.org.uk">sustrans.org.uk</a> Sustrans is the UK's leading sustainable transport charity.	<b>Bus Times</b> See timetable displays at bus stops. <a href="http://www.traveline.info">www.traveline.info</a> 0871 200 22 33 call cost 13p per minute plus your phone company's access charge	<b>NextBuses</b> <b>Find the bus times for your stop.</b> Search for a bus stop by entering a postcode, street & town or a stop name & town.	<b>PlusBus</b> <b>plusbus.info</b> A discount price 'bus pass' that you buy with your train ticket. It gives you unlimited bus travel around your chosen town, on participating buses.
---	---	--	--	--

## National Rail Enquiries

<b>Online</b> <a href="http://nationalrail.co.uk">nationalrail.co.uk</a>	<b>NRE App</b> Free National Rail Enquiries app for iOS and Android	<b>Social Media</b> facebook.com/nationalrailenq @nationalrailenq	<b>Alert Me</b> You can sign up to Alert Me messages on the National Rail Enquiries website where you can receive train and platform notifications directly to your smart phone. <a href="http://nationalrail.co.uk/alertme">nationalrail.co.uk/alertme</a>	<b>Contact Centre</b> 03457 48 49 50 Calls cost no more than calls to geographic numbers (01 or 02) and may be recorded.	<b>PlusBike</b> <a href="http://nationalrail.co.uk/plusbike">nationalrail.co.uk/plusbike</a> For more information.
---	--	---	---	--	--



**National Rail**  
Britain's train companies working together

