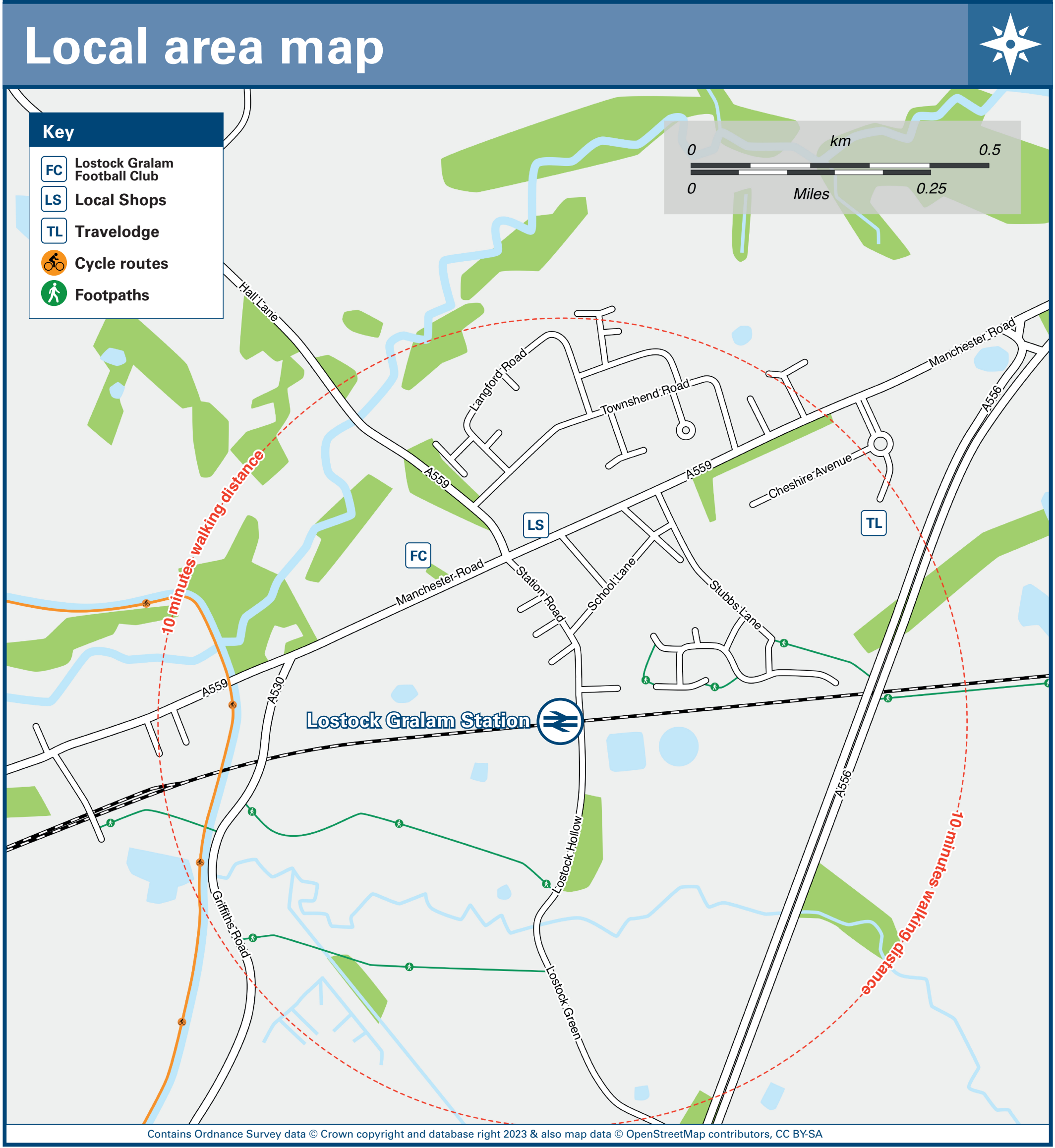
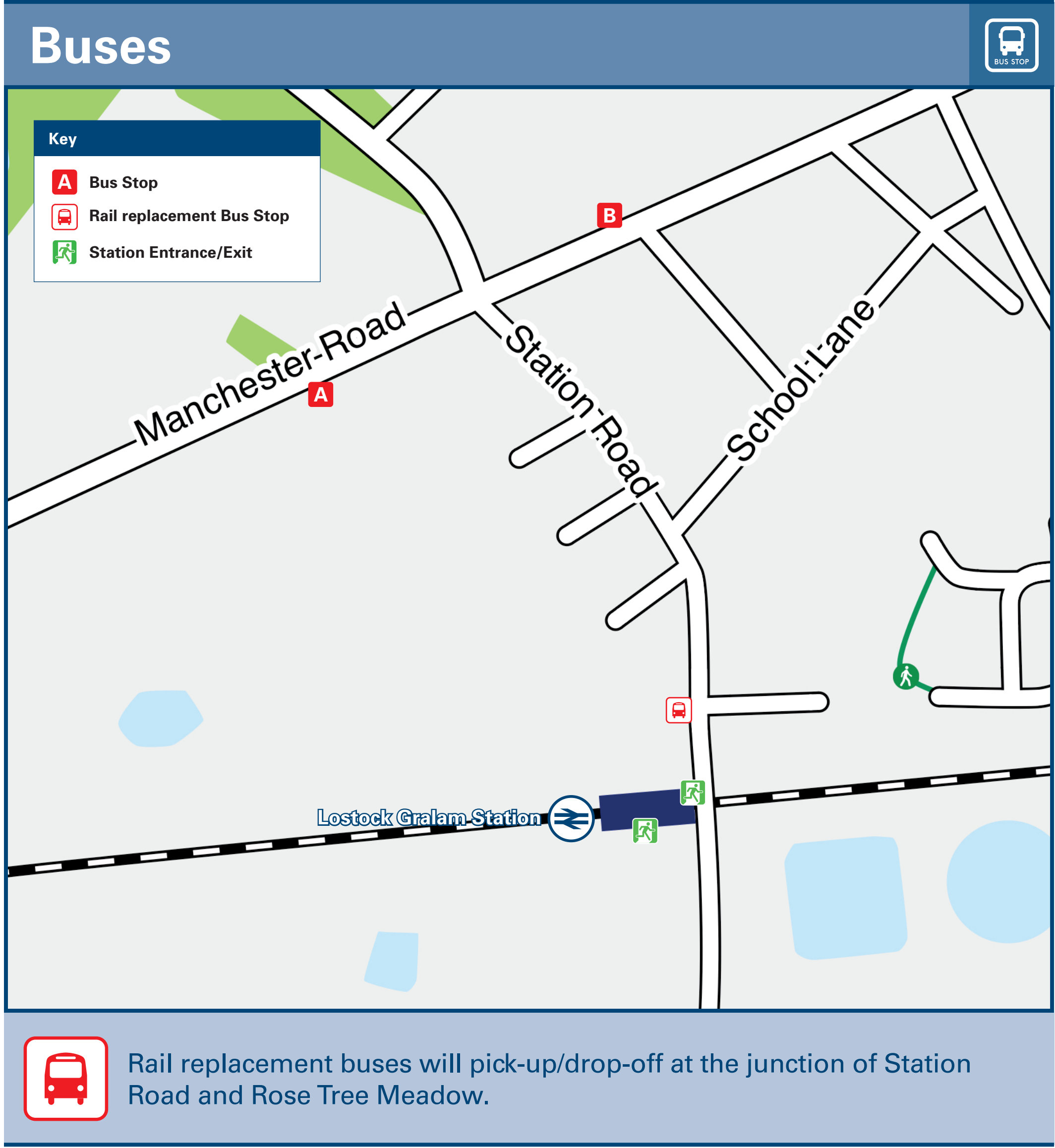




Lostock Gralam Station

Onward Travel Information



Main destinations by bus

(Data correct at November 2023)

DESTINATION	BUS ROUTES	BUS STOP
Antrobus	CAT9	B
Appleton	CAT9	B
Comberbach	CAT9	B
Gibb Hill	CAT9	B
Great Budworth	CAT9	B
Higher Marston	CAT9	B
Higher Wincham	CAT9, 89	B

DESTINATION	BUS ROUTES	BUS STOP
Knutsford	89	B
Leftwich	CAT9	A
Lower Stretton	CAT9	B
Northwich	CAT9, 89	A
Pickmere	89	B
Stockton Heath	CAT9	B
Stretton	CAT9	B

DESTINATION	BUS ROUTES	BUS STOP
Tabley	89	B
Warrington	CAT9	B
Wincham	CAT9, 89	B

Notes

Bus routes CAT9 and 89 operate limited Mondays to Saturdays services only. No Sunday services.

For bus times please see bus stop timetables or contact Traveline.

Direct trains operate to this destination from Lostock Gralam station.

<h3>Taxis</h3>	Lostock Gralam Station has no taxi rank or cab office. Advance booking is essential, please consider using the following local operators: (Inclusion of this number doesn't represent any endorsement of the taxi firm)	Delta Travel 01606 330 022	Jack Jones Taxis Northwich 01606 777 77	GM Travel 01606 776 77
----------------	---	--------------------------------------	---	----------------------------------

<h3>Further information about all onward travel</h3>					
Local Cycle Info cheshirewestandchester.gov.uk For more information about cycle routes.	National Cycle Info sustrans.org.uk Sustrans is the UK's leading sustainable transport charity.	Bus Times See timetable displays at bus stops. www.traveline.info 0871 200 22 33 calls cost 15p per minute plus your phone company's access charge	NextBuses Find the bus times for your stop. Search for a bus stop by entering a postcode, street & town or a stop name & town.	PlusBus plusbus.info A discount price 'bus pass' that you buy with your train ticket. It gives you unlimited bus travel around your chosen town, on participating buses.	
<h3>National Rail Enquiries</h3>					
Online nationalrail.co.uk	NRE App Free National Rail Enquiries app for iOS and Android	Social Media facebook.com/nationalrailenq @nationalrailenq	Alert Me You can sign up to Alert Me messages on the National Rail Enquiries website where you can receive train and platform notifications directly to your smart phone. nationalrail.co.uk/alertme	Contact Centre 03457 48 49 50 Calls cost no more than calls to geographic numbers (01 or 02) and may be recorded.	PlusBike nationalrail.co.uk/plusbike For more information.



This poster shows details of popular destinations and main, frequent bus routes. Additional services may run, so please check with Traveline or see posters at local bus stops. Whilst considerable care has been taken to ensure the information contained on this poster is correct and accurate, National Rail cannot accept responsibility for any loss or inconvenience caused by any errors or omissions, or for loss, damage, injury or inconvenience relating to the cancellation, alteration, delay or diversion of a service. For any feedback, please e-mail comments@onwardtravelposters.com

Scan this code with your mobile for full station information.