



Tring Station

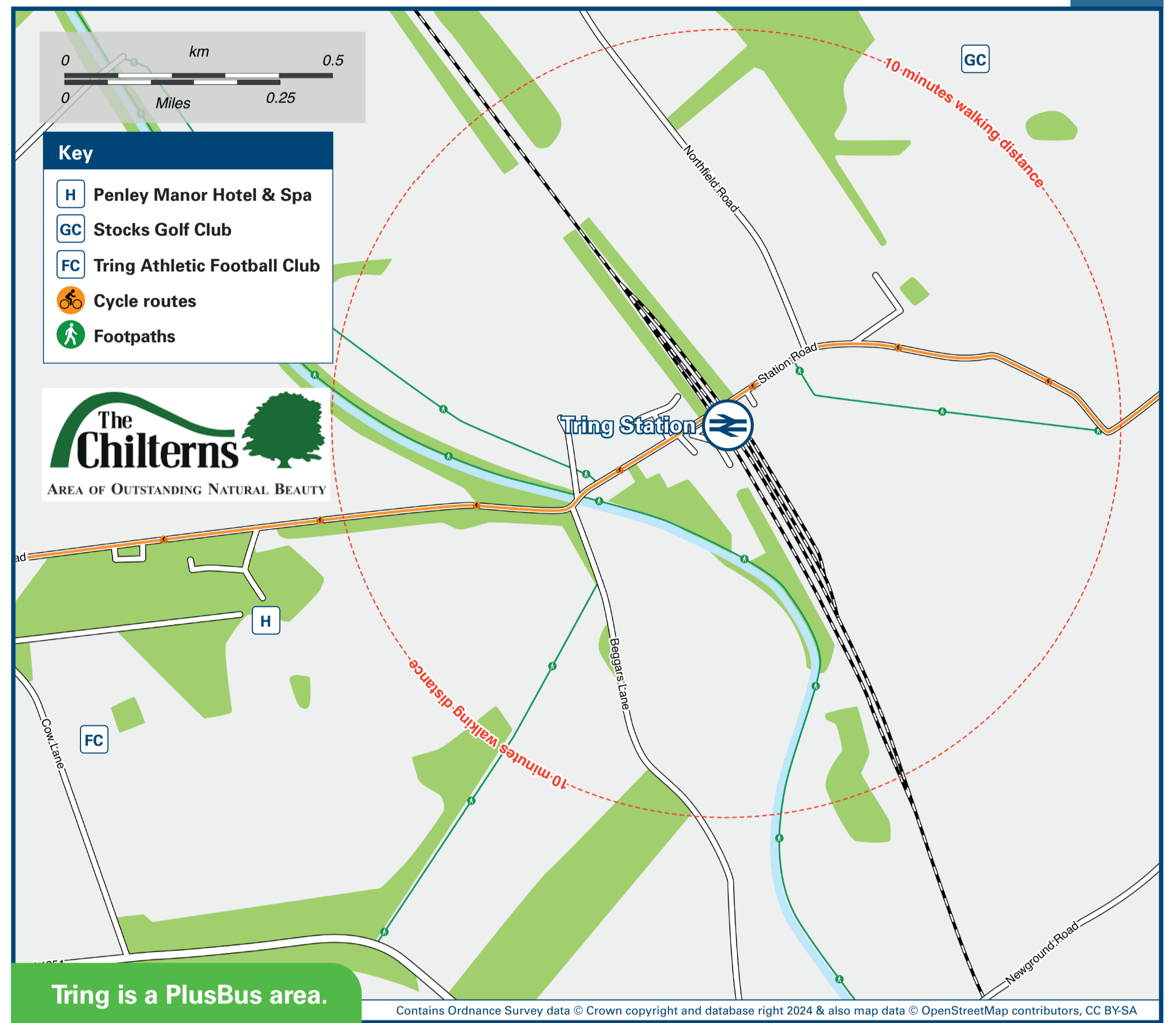
Onward Travel Information

Buses



Rail replacement buses/coaches will depart from existing bus stops outside the station.

Local area map



PlusBus is a discount price 'bus pass' that you buy with your train ticket. It gives you unlimited bus travel around your chosen town, on participating buses. Visit www.plusbus.info

Main destinations by bus

(Data correct at July 2024)

DESTINATION	BUS ROUTES	BUS STOP
● Aldbury	387	Tring Station Stop B
● Aston Clinton	61, 62, 501*, X5	Town Centre Stop A+
Aylesbury	61, 62, 501*, 502*, X5	Town Centre Stop A+
● Beech Park (Mobile Home)	397	Town Centre Stop B+
Cheddington Village	62	Town Centre Stop B+
● Dunstable	61, X61**	Town Centre Stop B+
● Eaton Bray	61	Town Centre Stop B+
● Edlesborough	61	Town Centre Stop B+
● Halton (Main Point)	502*	Tring Station Stop A
Ivinghoe	61, 62, 502*, X61**	Town Centre Stop B+

DESTINATION	BUS ROUTES	BUS STOP
● Long Marston	62	Town Centre Stop B+
● Marsworth	62, 502*	Town Centre Stop B+
	387, 389	Tring Station Stop A
● New Mill	387, 389, 397	Town Centre Stop A+
	61, 62, 502*, X61**	Town Centre Stop B+
● Pitstone	61, 62, 502*, X61**	Town Centre Stop B+
● Totternhoe	61	Town Centre Stop B+
● Tring Town Centre (Church Square)	387, 389	Tring Station A
● Wendover	502*	Tring Station Stop A
● Weston Turville	502*	Tring Station Stop A

DESTINATION	BUS ROUTES	BUS STOP
● Wiggington / Wiggington Bottom	397	Town Centre Stop B+
● Wilstone	62	Town Centre Stop B+

Notes

- PlusBus destination, please see below for details.

Bus routes 61, 62, 387, 389, 397 and X5 run Mondays to Saturdays. For bus times and further information contact TraveLine on 0871 200 22 33 or contact Arriva (for bus route X5) call 0344 800 44 11; Red Eagle (for bus routes 61, 62, 398 & X61) call 01296 630 402 or Red Rose Travel (for bus routes 61, 62, 387, 389, 397, 501 & 502) call 01296 747 926.

+ See how to get to Tring Town Centre, Church Square for bus stops (A) and (B) on Tring High Street and change for these bus services.

* Bus routes 501 and 502 run Sundays and Public Holidays only.

** Bus route X61 runs one early morning journey Mondays to Saturdays only to this destination, also serves Luton station.

AONB The Chilterns (AONB) www.chilternsaonb.org

Taxis

Tring station has no taxi rank or cab office. Advance booking is essential, please consider using the following local operators: (inclusion of this number doesn't represent any endorsement of the taxi firm)

John's Taxis of Tring
01442 828 828

DMG Bevs Taxis
01442 824 105

Tring Cabs
01442 620 620

Further information about all onward travel

Local Cycle Info dacorum.gov.uk For more information about cycle routes.	National Cycle Info sustrans.org.uk Sustrans is the UK's leading sustainable transport charity.	Bus Times See timetable displays at bus stops. www.traveline.info 0871 200 22 33 call cost 13p per minute plus your phone company's access charge	NextBuses Find the bus times for your stop. Search for a bus stop by entering a postcode, street & town or a stop name & town.	PlusBus plusbus.info A discount price 'bus pass' that you buy with your train ticket. It gives you unlimited bus travel around your chosen town, on participating buses.
---	---	--	--	--

National Rail Enquiries

Online nationalrail.co.uk	NRE App Free National Rail Enquiries app for iOS and Android	Social Media facebook.com/nationalrailenq @nationalrailenq	Alert Me You can sign up to Alert Me messages on the National Rail Enquiries website where you can receive train and platform notifications directly to your smart phone. nationalrail.co.uk/alertme	Contact Centre 03457 48 49 50 Calls cost no more than calls to geographic numbers (01 or 02) and may be recorded.	PlusBike nationalrail.co.uk/plusbike For more information.
---	--	--	---	--	--

