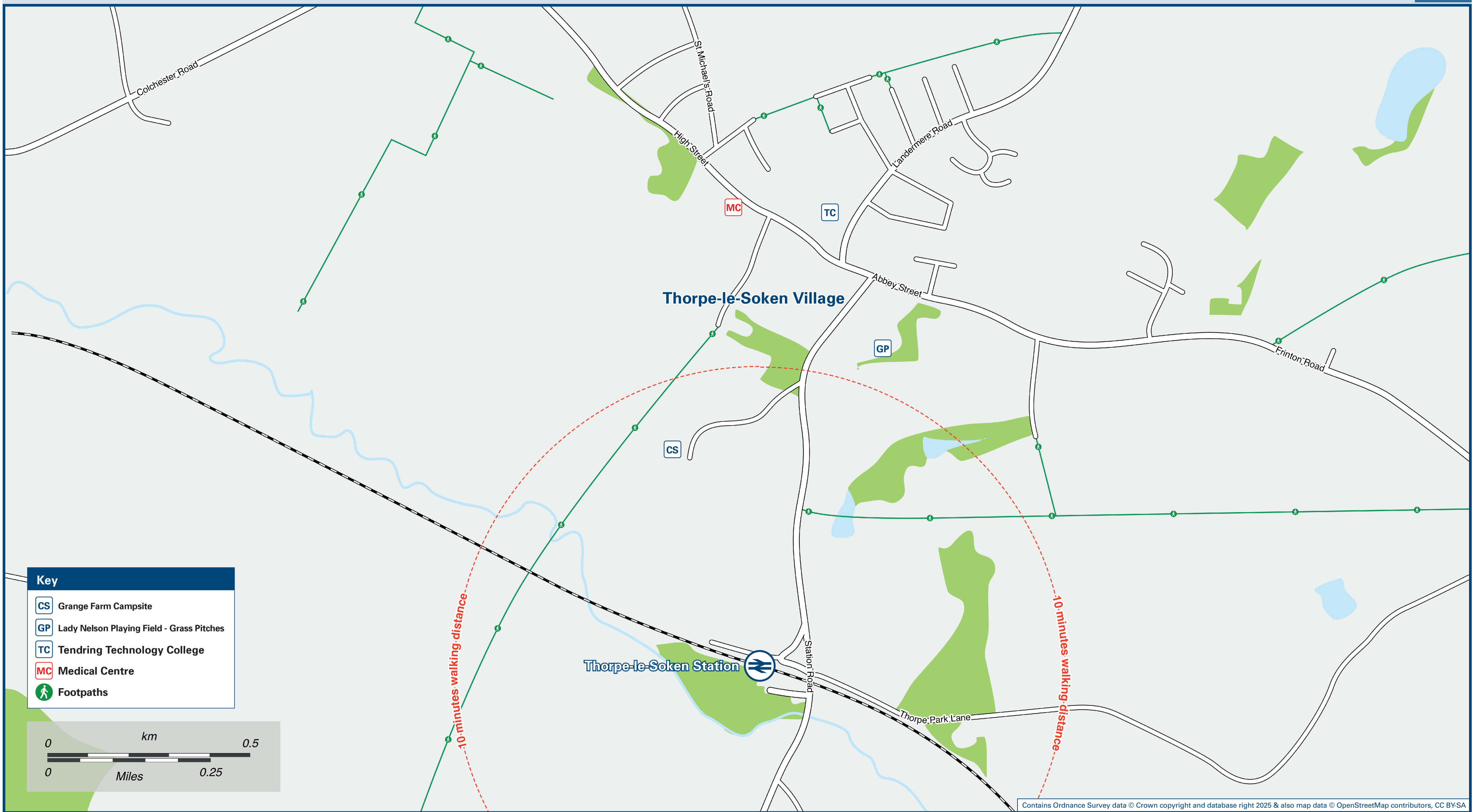




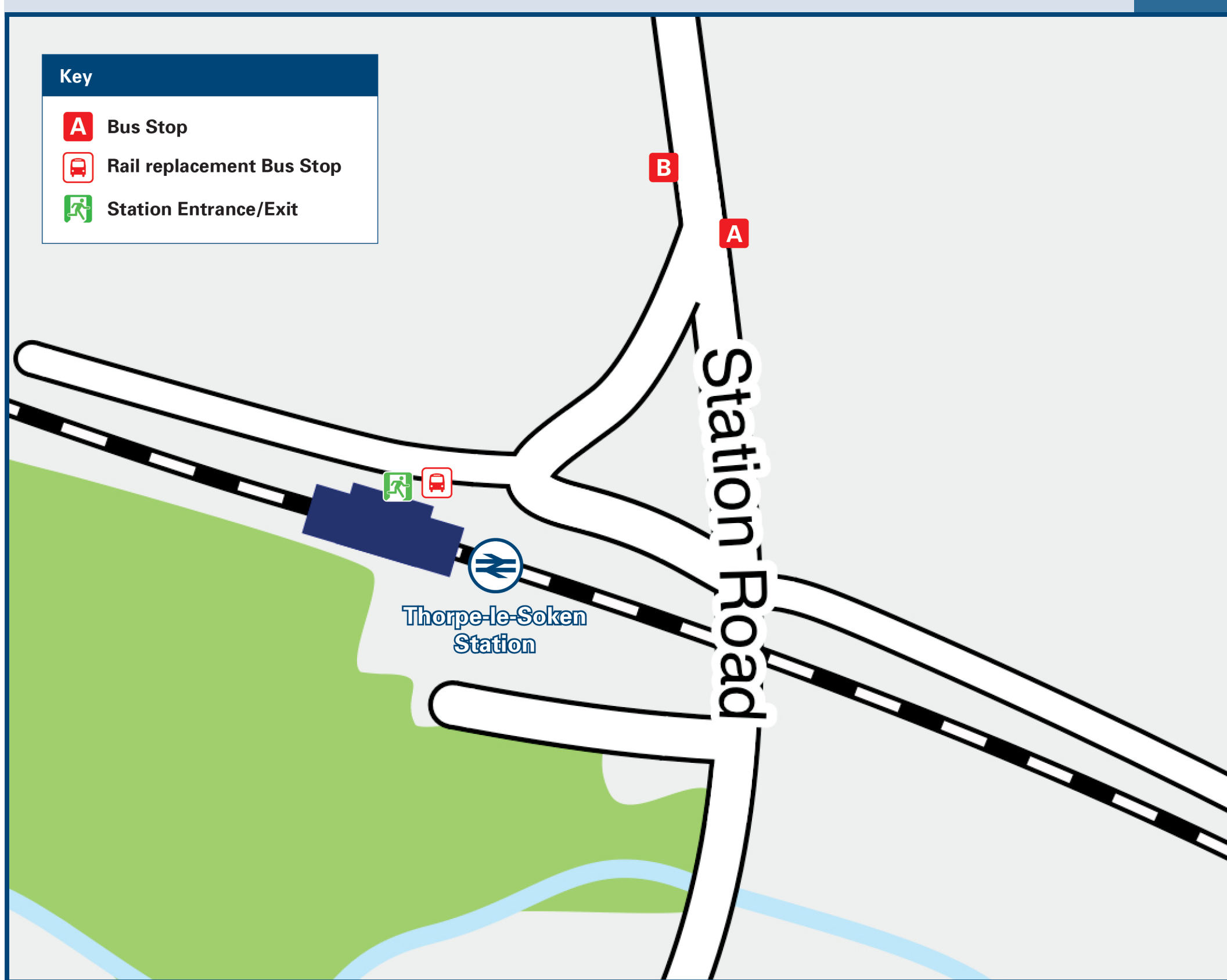
Thorpe-Le-Soken Station

Onward Travel Information

Local area map



Buses



Rail replacement bus services pick up and drop off from the entrance to the station car park.

Main destinations by bus

(Data correct at September 2025)

DESTINATION	BUS ROUTES	BUS STOP
Beaumont	3	B
Bockings Elm	3	A
Clacton (Town Centre)	3	A
Dovercourt (& Upper Dovercourt)	3	B
Great Oakley	3	B
Harwich	3	B
Little Clacton	3	A
Little Oakley	3	B
Meadowview Estate (Little Clacton)	3	A
Tending Technology College	3	B
Thorpe-le-Soken Village	15 - 20 minutes walk from this station	
	3	B

Notes

Bus route 3 operates a Mondays to Saturdays service, only. No service on Sundays or Bank Holidays. Additional bus services run from Thorpe-le-Soken Village High Street. For bus times and days of operation please contact Traveline on www.traveline.info or call: 0871 200 22 33

Direct trains operate to this destination from this station.

Taxis

Thorpe-le-Soken station has no taxi rank or cab office. Advance booking is essential, please consider using the following local operators: (Inclusion of this number doesn't represent any endorsement of the taxi firm)

TJ's Taxis
01255 670 099

Weeley Taxis
01255 830 144

Ajs Taxis
01255 474 444

Further information about all onward travel

Local Cycle Info tendingdc.gov.uk For more information about cycle routes.	National Cycle Info sustrans.org.uk Sustrans is the UK's leading sustainable transport charity.	Bus Times See timetable displays at bus stops. www.traveline.info 0871 200 22 33 call cost 13p per minute plus your phone company's access charge	PlusBus plusbus.info PlusBus is a discount price 'bus pass' that you buy with your train ticket. It gives you unlimited bus travel around your chosen town, on participating buses. Visit www.plusbus.info
---	---	--	---

National Rail Enquiries

Online nationalrail.co.uk	NRE App Free National Rail Enquiries app for iOS and Android	Social Media facebook.com/nationalrailenq @nationalrailenq	Alert Me You can sign up to Alert Me messages on the National Rail Enquiries website where you can receive train and platform notifications directly to your smart phone. nationalrail.co.uk/alertme	Contact Centre 03457 48 49 50 Calls cost no more than calls to geographic numbers (01 or 02) and may be recorded.	PlusBike nationalrail.co.uk/plusbike For more information.
---	--	---	---	--	--

greateranglia



National Rail
Britain's train companies working together

