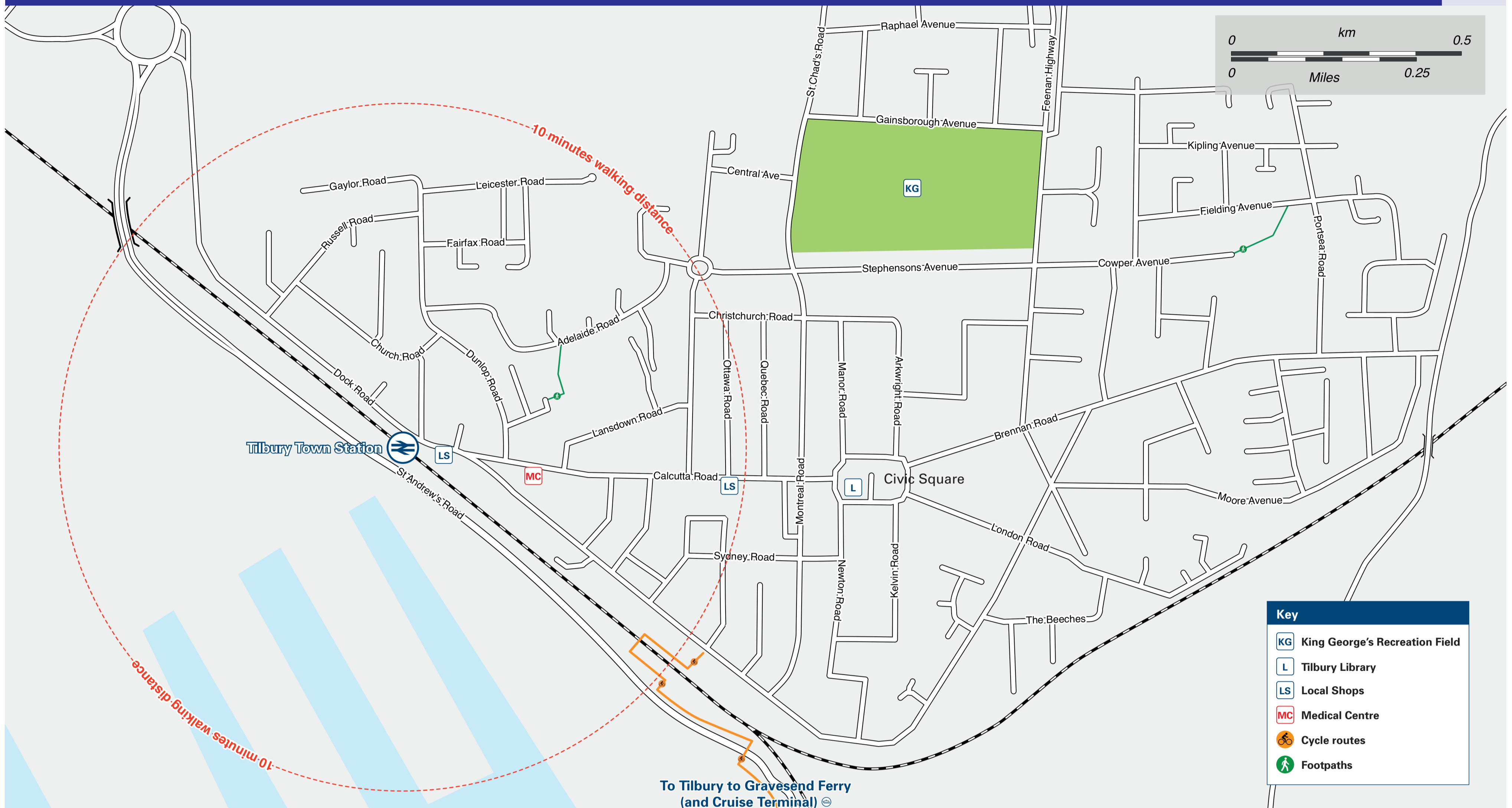




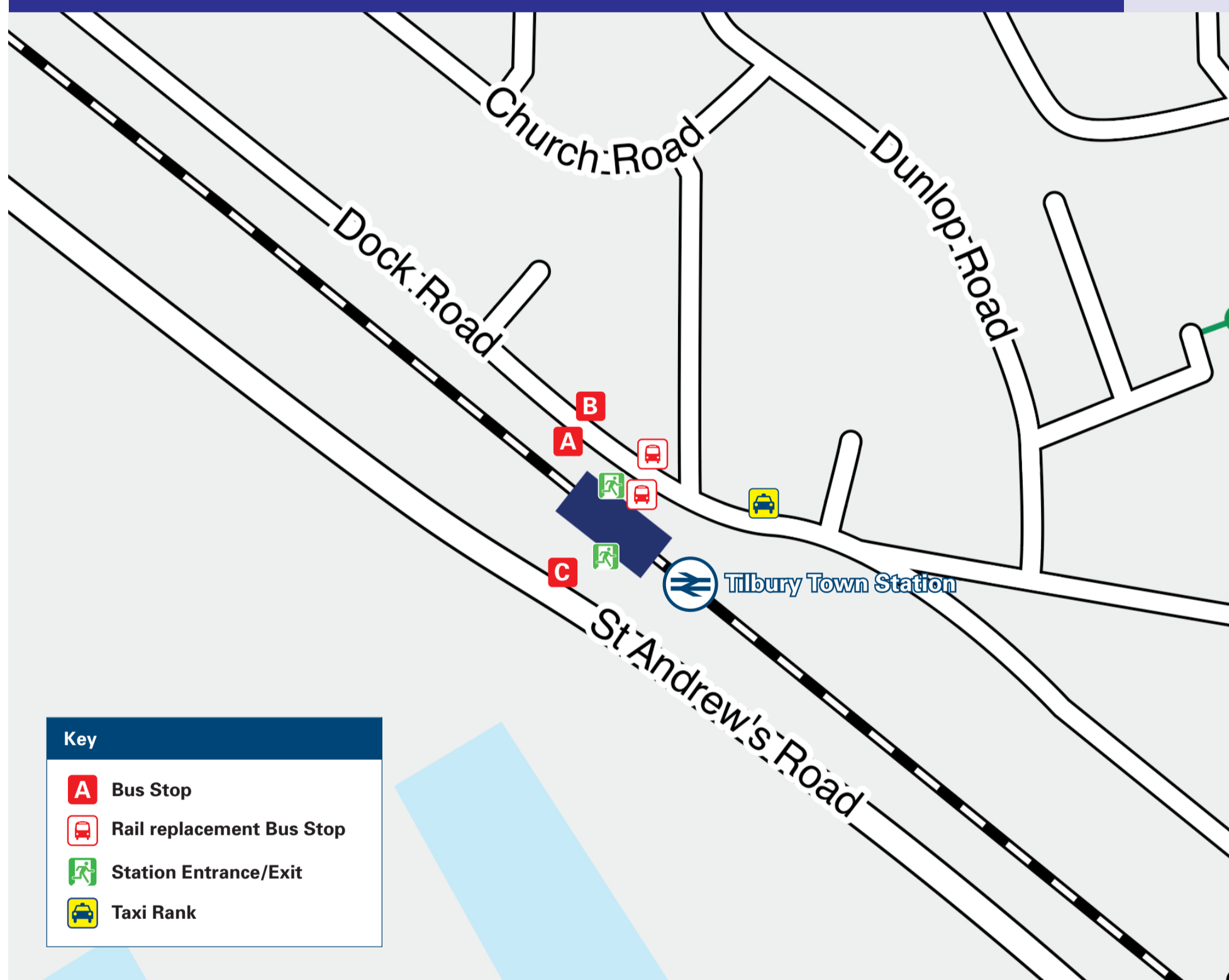
Onward Travel Information

Tilbury Town Station

Local area map



Buses and Taxis



c2c Rail Replacement outside the front of the Platform 2 Entrance on Dock Road. Buses to Grays/London at Bus Stop **B**, across the road. Buses to Pitsea/Southend at Bus Stop **A**, in front of the Station.

Main destinations by bus

(Data correct at March 2026)



DESTINATION	BUS ROUTES	BUS STOP
Basildon (Bus Station)	200	B
Basildon (Hospital)	200	B
Chadwell St Mary (Morant Road)	200	B
Chadwell St Mary (River View Cross Keys)	73	B
Corringham	200	B
Grays	200	A
	73	B
Intu Lakeside (Bus Station)	73	B
Palmer's College	73	B
Stanford Le Hope	200	B
Tilbury (ASDA Superstore)	99, 200	A
Tilbury (Civic Square)	10 - 15 minutes walk from this station (see Local area map)	
Tilbury (Cruise Terminal)	99	C
Tilbury - Gravesend Ferry	99	C
Tilbury (Toronto Road)	200	B
West Thurrock (The Rookery)	73	B

NOTES

Bus route 99 runs a service on Mondays to Saturdays, only. No Sunday services.
Bus routes 73 & 200 run daily services, Mondays to Sundays.
For bus times and days of operation please contact Traveline on www.traveline.info or call: 0871 200 22 33
Direct trains operate to this destination from this station.

Taxis

Tilbury Station is served by a taxi rank or a cab office. Check availability before travelling, and pre-book if necessary. Please consider using the following local operators: (Inclusion of this number doesn't represent any endorsement of the taxi firm)

Tilbury Taxis
01375 855 555

Thurrock Taxi Cab
01375 506 024

Thurrock & Grays ASB Taxis
01375 506 122

Further information about all onward travel

Local Cycle Info

thurrock.gov.uk
For more information about cycle routes.

National Cycle Info

walkwheelcycletrust.org.uk

Bus Times

See timetable displays at bus stops.
www.traveline.info
0871 200 22 33
public transport info
please use your phone's camera to scan the code



PlusBus



plusbus.info

PlusBus is a discount price 'bus pass' that you buy with your train ticket. It gives you unlimited bus travel around your chosen town, on participating buses. Visit plusbus.info

National Rail Enquiries

Online	NRE App	Social Media	Alert Me	Contact Centre	PlusBike
nationalrail.co.uk	Free National Rail Enquiries app for iOS and Android	facebook.com/nationalrailenq @nationalrailenq	nationalrail.co.uk/alertme You can sign up to Alert Me messages on the National Rail Enquiries website where you can receive train and platform notifications directly to your smart phone.	03457 48 49 50 Calls cost no more than calls to geographic numbers (01 or 02) and may be recorded.	nationalrail.co.uk/plusbike For more information.

