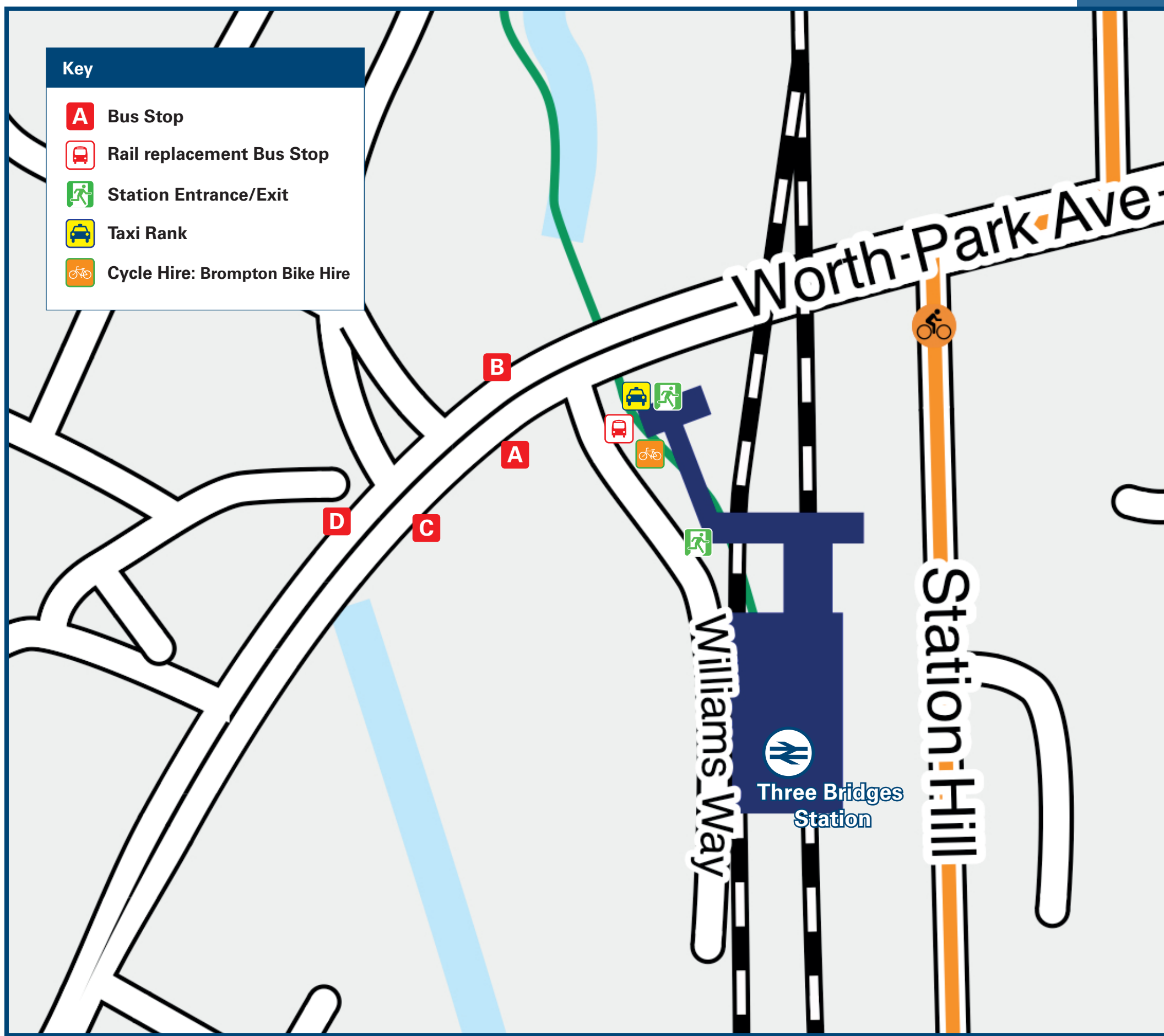




Three Bridges Station

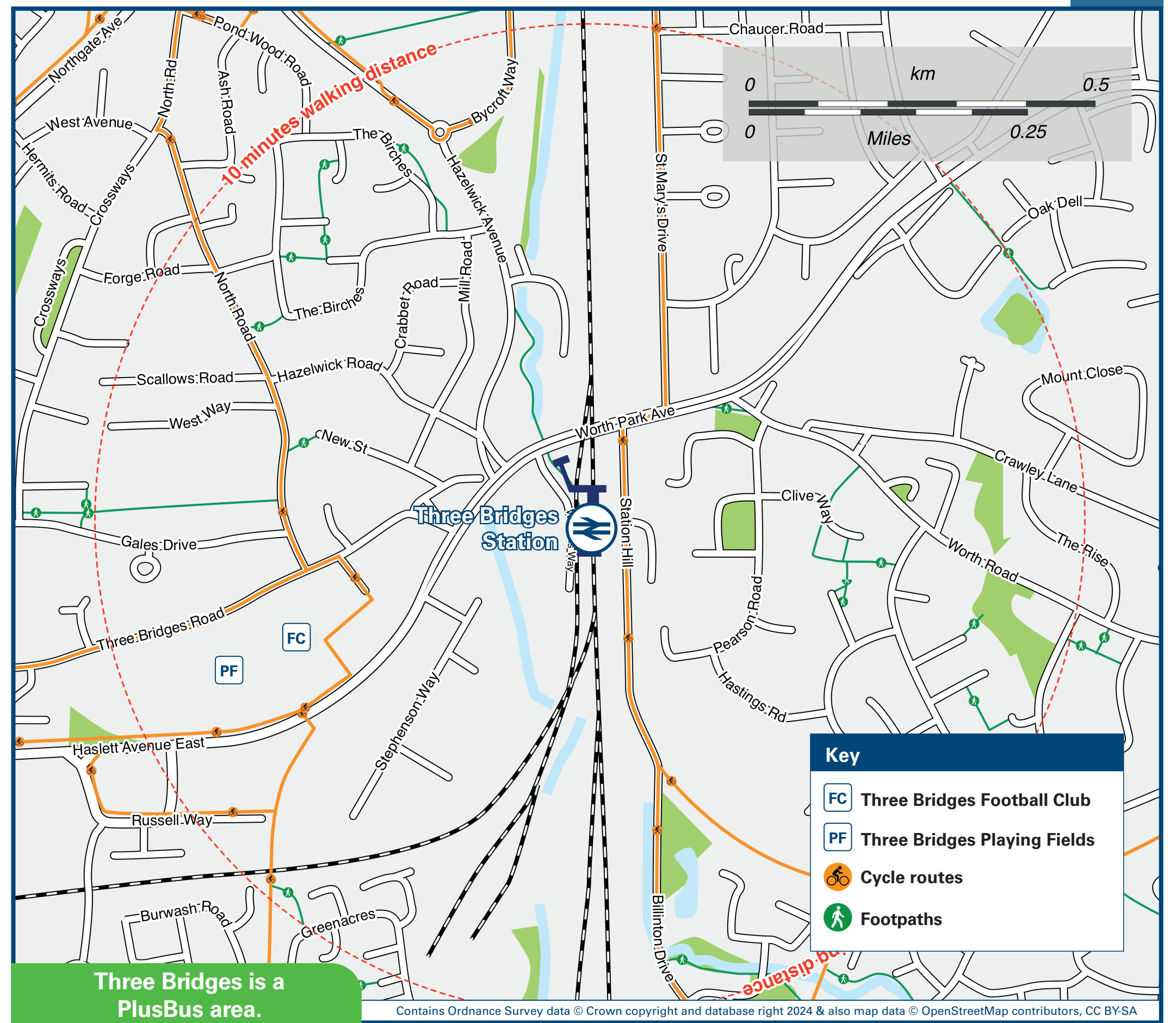
Onward Travel Information

Buses and Taxis and Cycle Hire



Rail Replacement buses depart from the station front.

Local area map



PlusBus is a discount price 'bus pass' that you buy with your train ticket. It gives you unlimited bus travel around your chosen town, on participating buses. Visit www.plusbus.info

Main destinations by bus

(Data correct at May 2024)



DESTINATION	BUS ROUTES	BUS STOP
Ardingly	272	B
Ashurst Wood	291	B
Bewbush	3	A
Broadfield Barton	20	C
Broadfield Stadium (Crawley Town FC)	20	C
	3	B
City Place	400	A
	20	D
Coleman's Hatch	291	B
Copthome Village	281, 291	B
Copthome (Dukes Head)	272, 281, 291, 400	B
Copthome West	281	B
County Oak	4, 5	A
	3, 4, 5, 84, 100, 272, 281, 291, 400	A
Crawley (Town Centre) #	400	A
	20	C
Crawley Down	272, 281, 291	B
Crawley Hospital (West Green Drive)	3	A
Crematorium (Balcombe Road)	3	B
Dormansland	281	B
East Grinstead	84, 281, 291, 400	B
East Surrey Hospital	100, 400	A
Felbridge	281, 291, 400	B
Forest Row	291	B
Forge Wood (Somerley Drive)	3	B
Gatwick Airport (North Terminal)	100	A

DESTINATION	BUS ROUTES	BUS STOP
	3	B
Gatwick Airport (South Terminal)	4, 5, 100, 400	A
	20	D
Gossops Green Shops	3	A
Haywards Heath (& Princess Royal Hospital)	272	B
Heathy Wood	281	B
	20	D
Horley	100, 400	A
Langley Green	4, 5	A
Langshott/The Acres	20	D
Leisure Park Multiplex	4, 5	A
Lindfield	272	B
Lingfield & Lingfield Park Racecourse	281	B
Maidenbower	100	B
	20	D
Manor Royal	100, 400	A
Northgate	4, 5, 100, 400	A
Pease Pottage	20	C
Pound Hill	3, 4, 5, 84, 272, 281, 291, 400	B
Povey Cross	100	A
Salfords	100, 400	A
Selsfield Common	84, 272	B
Sharpthorne	84	B
South of England Showground	272	B
Standen House & Garden (National Trust)	84	B
Tilgate (Southgate Avenue)	20	C
Tinsley Green (Radford Road)	3	B

DESTINATION	BUS ROUTES	BUS STOP
Tollgate Hill	20	C
Tulley's Farm	84	B
Turners Hill Park	84	B
Turners Hill Village	84, 272	B
Wakehams Green (Halifax Close)	4, 5	B
Wakehurst Place	272	B
West Hoathly	84	B
Woodgate	20	C

Notes

- PlusBus destination, please see below for details.
- Bus routes 3, 4, 5, 20, 100, 291 and 400 operate daily services.
- Bus routes 84, 272 and 281 operate Mondays to Saturdays services.
- For bus times and other bus enquiries, please contact Traveline on www.traveline.info, or call 0871 200 22 33; or contact the bus operator: Metrobus on www.metrobus.co.uk, or phone 01293 449 191.
- Direct trains operate to this destination from this station.
- Alight East Grinstead station for the Bluebell Railway (www.bluebell-railway.com, or phone 01825 720 800 for more details).
- # All buses call at Crawley Town Centre at the bus station, except bus route 20 which calls at Crawley Town Centre East on Southgate Avenue.
- Bike Hire bromptondock.co.uk; tel:0202 8232 3934 (text 2739 to reserve a bike)
- AONB High Weald (AONB) www.highweald.org

Taxis

Three Bridges is a major station where taxis are usually available on a rank. Advance booking is not normally necessary, unless arriving early in the morning or late at night. Operators who may accept bookings include: (Inclusion of this number doesn't represent any endorsement of the taxi firm)

Western Cars
01293 300 000

Station Taxis
01293 611 331

Barkers Taxis
01293 774 775

Further information about all onward travel

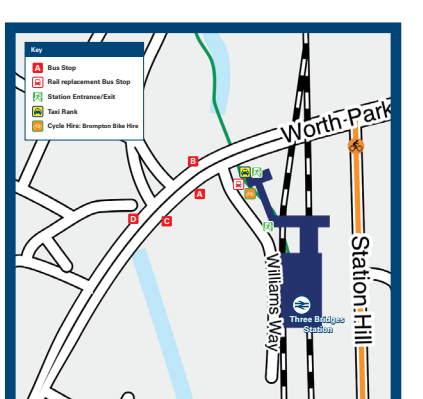
Local Cycle Info crawley.gov.uk For more information about cycle routes.	National Cycle Info sustrans.org.uk Sustrans is the UK's leading sustainable transport charity.	Bus Times See timetable displays at bus stops. www.traveline.info 0871 200 22 33 call cost 13p per minute plus your phone company's access charge	NextBuses Find the bus times for your stop. Search for a bus stop by entering a postcode, street & town or a stop name & town.	PlusBus plusbus.info A discount price 'bus pass' that you buy with your train ticket. It gives you unlimited bus travel around your chosen town, on participating buses.
---	---	--	--	--

National Rail Enquiries

Online nationalrail.co.uk	NRE App Free National Rail Enquiries app for iOS and Android	Social Media facebook.com/nationalrailenq @nationalrailenq	Alert Me You can sign up to Alert Me messages on the National Rail Enquiries website where you can receive train and platform notifications directly to your smart phone. nationalrail.co.uk/alertme	Contact Centre 03457 48 49 50 Calls cost no more than calls to geographic numbers (01 or 02) and may be recorded.	PlusBike nationalrail.co.uk/plusbike For more information.
---	--	---	---	--	--



National Rail
Britain's train companies working together



This poster shows details of popular destinations and main, frequent bus routes. Additional services may run, so please check with Traveline or see posters at local bus stops. Whilst considerable care has been taken to ensure the information contained on this poster is correct and accurate, National Rail cannot accept responsibility for any loss or inconvenience caused by any errors or omissions, or for loss, damage, injury or inconvenience relating to the cancellation, alteration, delay or diversion of a service. For any feedback, please e-mail comments@onwardtravelposters.com

Scan this code with your mobile for full station information.