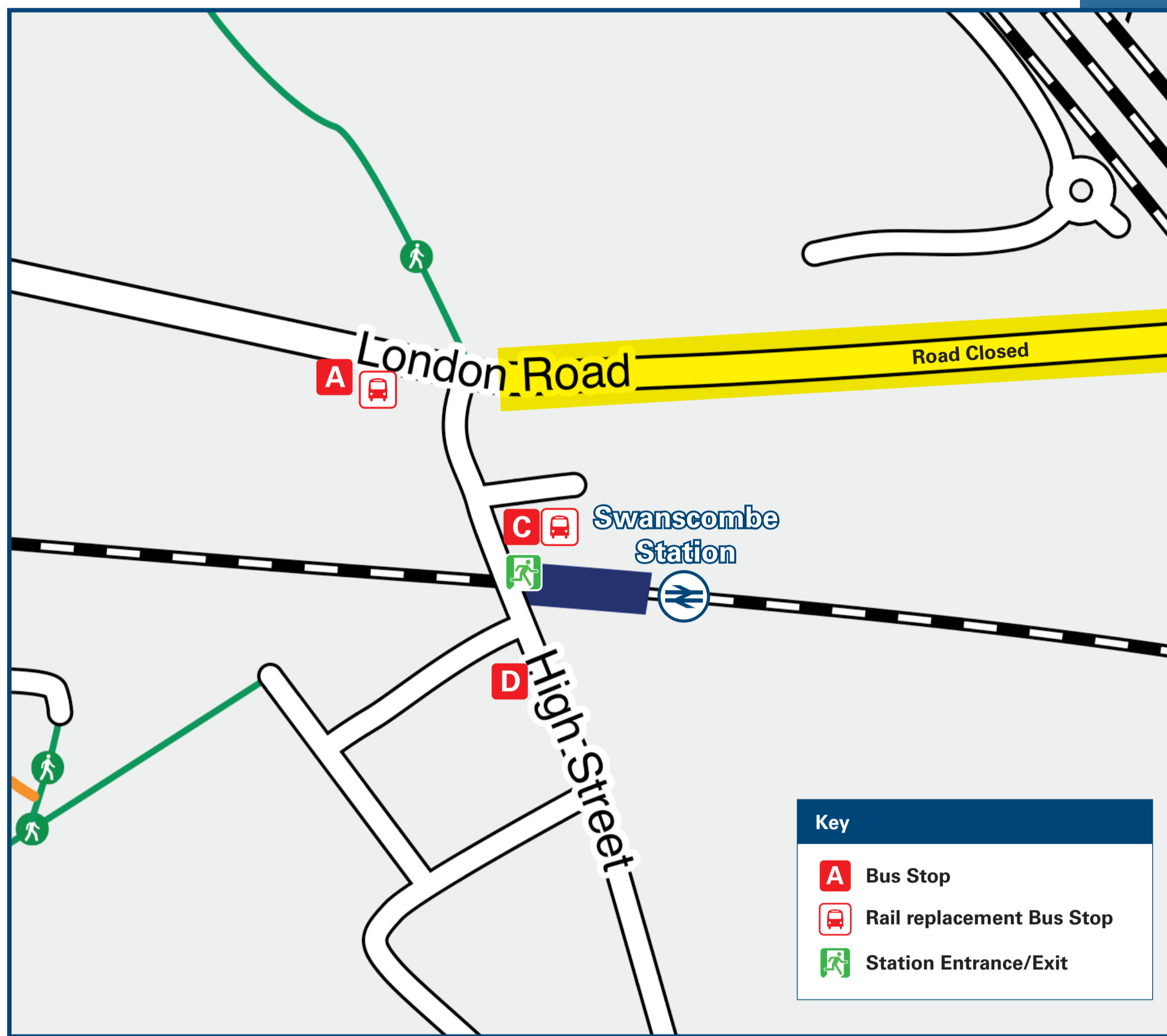




Swanscombe Station

Onward Travel Information

Buses



Rail replacement buses towards Greenhithe depart from bus stop **A** outside the Old George & Dragon Public House on London Road and buses towards Northfleet will depart from bus stop **C**, a temporary bus stop because Galley Hill Road is closed due to a landslip until further notice.

Local area map



Main destinations by bus

(Data correct at July 2024)

DESTINATION	BUS ROUTES	BUS STOP	DESTINATION	BUS ROUTES	BUS STOP	DESTINATION	BUS ROUTES	BUS STOP
Bluewater	470*	A, D	Gravesend (Railway Station & Town Centre)	470*, 480	C	Northfleet (High Street/The Hive)	470*, 480	C
Dartford (Home Gardens, for Dartford Station)	470*, 480	A, D	Greenhithe (Waterstone Park, London Road)	470*, 480	A, D	Notes Bus routes 480 and A fastrack operate a frequent daily service. Bus stop B on Galley Hill Road is closed because of a landslip, please use bus stop C on High Street. For further information contact Arriva Kent Thameside (for all bus routes) www.arrivabus.co.uk/help/contact-us or call 0344 800 44 11 or contact Traveline on 0871 200 22 33. Direct trains operate to this destination from this station. # Ebbfleet International Station is a 10 minutes walk from the Thames Way bus stop via Ebbfleet International Car Park C. @ Regular all day buses to Bluewater depart from Greenhithe station and Northfleet High Street. * Bus routes 470 and AZ fastrack operate early mornings and evenings daily.		
Ebbfleet International Station (Thames Way)#	470*, 480	C	Horns Cross/Stone (London Road)	470*, 480	A, D			

Taxis

Swanscombe Station has no taxi rank or cab office. Advance booking is essential, please consider using the following local operators: (Inclusion of this number doesn't represent any endorsement of the taxi firm)

DA1 Cars
01322 800 123

Street Cars
01322 370 000

Swanscombe Cars
01322 252 524

Further information about all onward travel

Local Cycle Info dartford.gov.uk For more information about cycle routes.	National Cycle Info sustrans.org.uk Sustrans is the UK's leading sustainable transport charity.	Bus Times See timetable displays at bus stops. www.traveline.info 0871 200 22 33 call cost 13p per minute plus your phone company's access charge	NextBuses Find the bus times for your stop. Search for a bus stop by entering a postcode, street & town or a stop name & town.	PlusBus plusbus.info A discount price 'bus pass' that you buy with your train ticket. It gives you unlimited bus travel around your chosen town, on participating buses.
---	---	--	---	--

National Rail Enquiries

Online nationalrail.co.uk	NRE App Free National Rail Enquiries app for iOS and Android	Social Media facebook.com/nationalrailenq @nationalrailenq	Alert Me You can sign up to Alert Me messages on the National Rail Enquiries website where you can receive train and platform notifications directly to your smart phone. nationalrail.co.uk/alertme	Contact Centre 03457 48 49 50 Calls cost no more than calls to geographic numbers (01 or 02) and may be recorded.	PlusBike nationalrail.co.uk/plusbike For more information.
---	--	--	---	--	---



National Rail
Britain's train companies working together



This poster shows details of popular destinations and main, frequent bus routes. Additional services may run, so please check with Traveline or see posters at local bus stops. Whilst considerable care has been taken to ensure the information contained on this poster is correct and accurate, National Rail cannot accept responsibility for any loss or inconvenience caused by any errors or omissions, or for loss, damage, injury or inconvenience relating to the cancellation, alteration, delay or diversion of a service. For any feedback, please e-mail comments@onwardtravelposters.com

Scan this code with your mobile for full station information.