



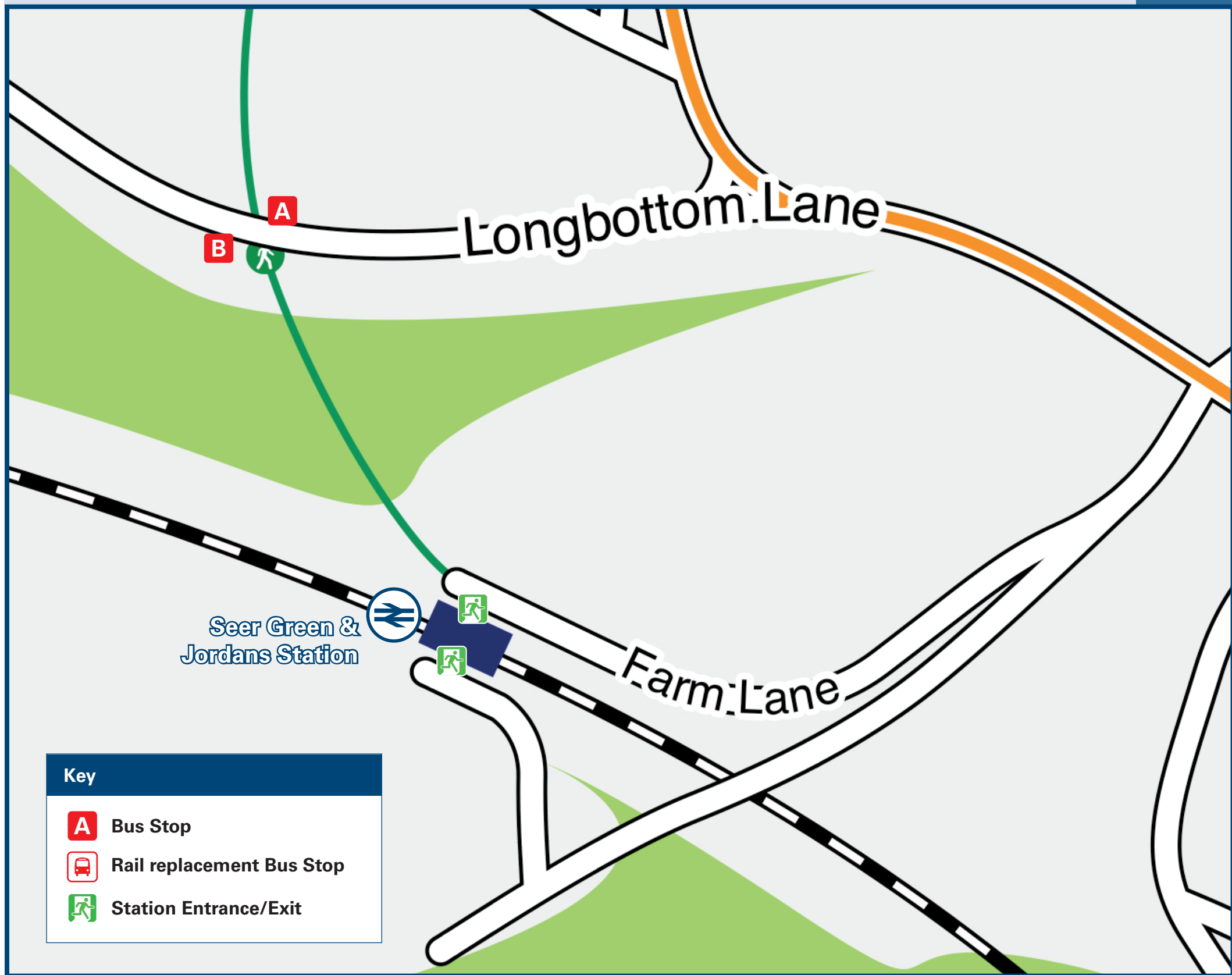
Seer Green & Jordans Station

Onward Travel Information

Local area map



Buses



This station is not served by rail replacement buses due to difficult road access. Please use the Passenger Help Point on the station to arrange for a taxi to the nearest served Chiltern Railways station.

Main destinations by bus

(Data correct at May 2025)



DESTINATION	BUS ROUTES	BUS STOP
Beaconsfield	104	B
Beaconsfield Old Town	104	B
Chalfont St Giles	104	A
Chalfont St Peter	104	A
Denham	104	A
Gerrards Cross	104	A
High Wycombe	104	B
Holtspur	104	B
Loudwater	104	B
New Denham	104	A
Tatling End	104	A
Uxbridge	104	A
Wycombe Marsh	104	B

Notes

- Bus route 104 operates a daily service.
- Direct trains operate from this destination from this station.
- Change here for London Underground trains
- AONB Chiltern Hills AONB

Taxis

Seer Green & Jordans Station has no taxi rank or cab office. Advance booking is essential, please consider using the following local operators: (Inclusion of this number doesn't represent any endorsement of the taxi firm)

Chalfont Taxis
01494 875 522

Fleet Cars
01494 681 953

Beaconsfield Taxi
01494 372 978

Further information about all onward travel

Local Cycle Info	National Cycle Info	Bus Times	NextBuses	PlusBus
buckinghamshire.gov.uk For more information on bus routes and cycling	sustrans.org.uk Sustrans is the UK's leading sustainable transport charity.	See timetable displays at bus stops. www.traveline.info 0871 200 22 33 calls cost 10p per minute plus your phone company's access charge	 Find the bus times for your stop. Search for a bus stop by entering a postcode, street & town or a stop name & town.	 plusbus.info A discount price 'bus pass' that you buy with your train ticket. It gives you unlimited bus travel around your chosen town, on participating buses.

National Rail Enquiries

Online	NRE App	Social Media	Alert Me	Contact Centre	PlusBike
nationalrail.co.uk	Free National Rail Enquiries app for iOS and Android	facebook.com/nationalrailenq @nationalrailenq	You can sign up to Alert Me messages on the National Rail Enquiries website where you can receive train and platform notifications directly to your smart phone. nationalrail.co.uk/alertme	03457 48 49 50 Calls cost no more than calls to geographic numbers (01 or 02) and may be recorded.	nationalrail.co.uk/plusbike For more information.

Chilternrailways



National Rail
Britain's train companies working together



This poster shows details of popular destinations and main, frequent bus routes. Additional services may run, so please check with Traveline or see posters at local bus stops. Whilst considerable care has been taken to ensure the information contained on this poster is correct and accurate, National Rail cannot accept responsibility for any loss or inconvenience caused by any errors or omissions, or for loss, damage, injury or inconvenience relating to the cancellation, alteration, delay or diversion of a service. For any feedback, please e-mail comments@onwardtravelposters.com

Scan this code with your mobile for full station information.