



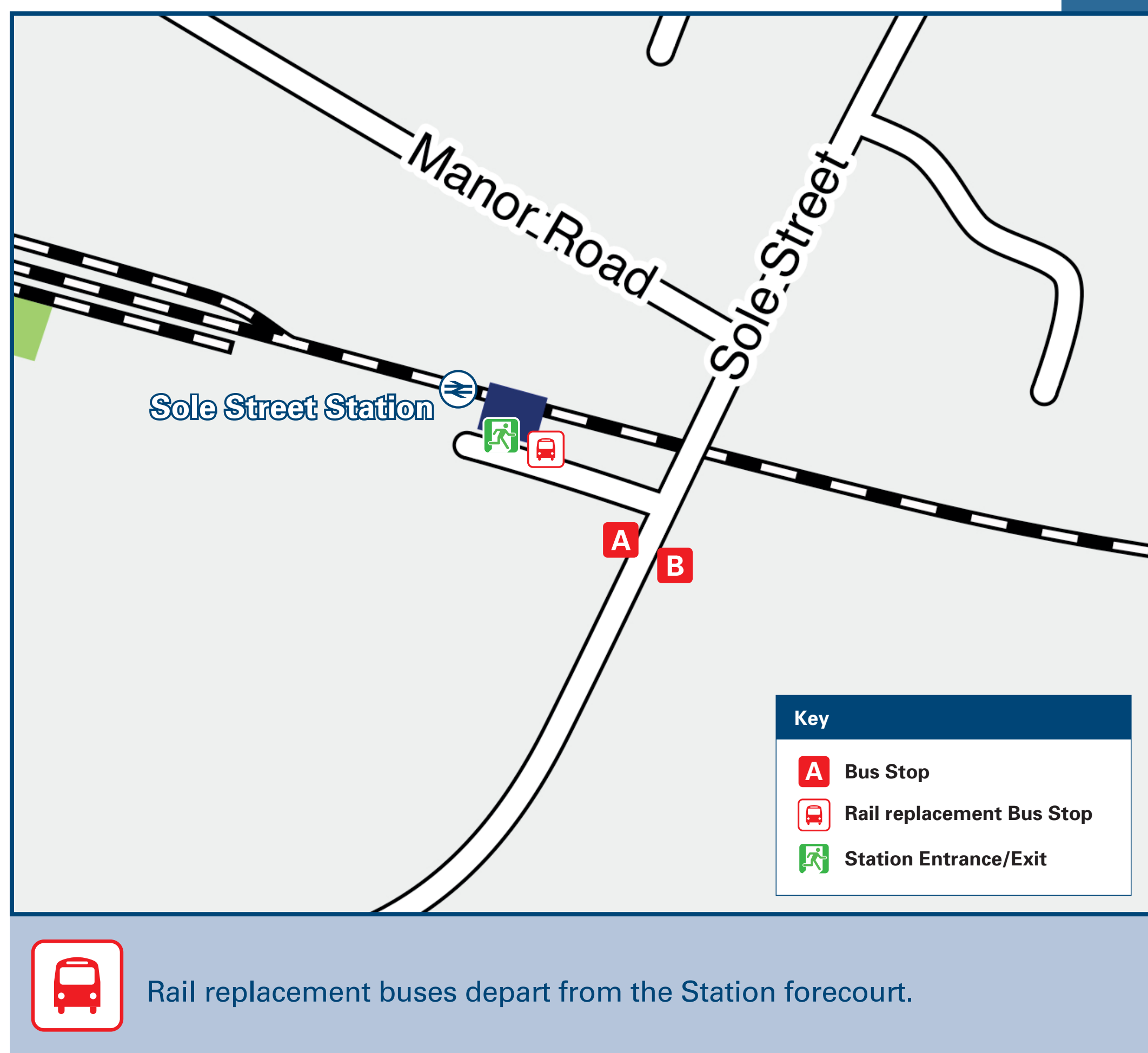
Sole Street Station

Onward Travel Information

Local area map



Buses



Main destinations by bus

(Data correct at July 2024)

DESTINATION	BUS ROUTES	BUS STOP
Chalk (Church)	416	A
Chalk (Thong Lane Bottom)	416	A
Cobham (Church & War Memorial)	416	A
Denton (St John's School)	416	A
Gravesend (Barrack Row, for Railway Station)	416	A
Gravesend (Clock Tower)	416	A
Gravesend (King Street, for Shops)	416	A
Hook Green (Meopham)	416	B
Meopham (Secondary School)	416	B
Shorne (Village Hall)	416	A
Shorne Woods Country Park	416	A

Notes

Bus route 416 operates Mondays to Saturdays.
For bus times and further information contact Redroute Buses (for bus route 416) www.redroutebuses.co.uk or call 0800 2346 842 or contact Traveline on 0871 200 22 33.

Taxis

Sole Street Station has no taxi rank or cab office. Advance booking is essential, please consider using the following local operators: (Inclusion of this number doesn't represent any endorsement of the taxi firm)

Abacus Taxis
01474 535 455

Meopham Cars
01474 813 441 or 01474 815 411

Earls Private Car Hire
01474 700 060

Further information about all onward travel

Local Cycle Info gravesham.gov.uk For more information about cycle routes.	National Cycle Info sustrans.org.uk Sustrans is the UK's leading sustainable transport charity.	Bus Times See timetable displays at bus stops. www.traveline.info 0871 200 22 33 call cost 13p per minute plus your phone company's access charge	NextBuses Find the bus times for your stop. Search for a bus stop by entering a postcode, street & town or a stop name & town.	PlusBus plusbus.info A discount price 'bus pass' that you buy with your train ticket. It gives you unlimited bus travel around your chosen town, on participating buses.
---	---	--	--	--

National Rail Enquiries

Online nationalrail.co.uk	NRE App Free National Rail Enquiries app for iOS and Android	Social Media facebook.com/nationalrailenq @nationalrailenq	Alert Me You can sign up to Alert Me messages on the National Rail Enquiries website where you can receive train and platform notifications directly to your smart phone. nationalrail.co.uk/alertme	Contact Centre 03457 48 49 50 Calls cost no more than calls to geographic numbers (01 or 02) and may be recorded.	PlusBike nationalrail.co.uk/plusbike For more information.
---	--	---	---	--	--

southeastern



National Rail
Britain's train companies working together

