



Solihull Station

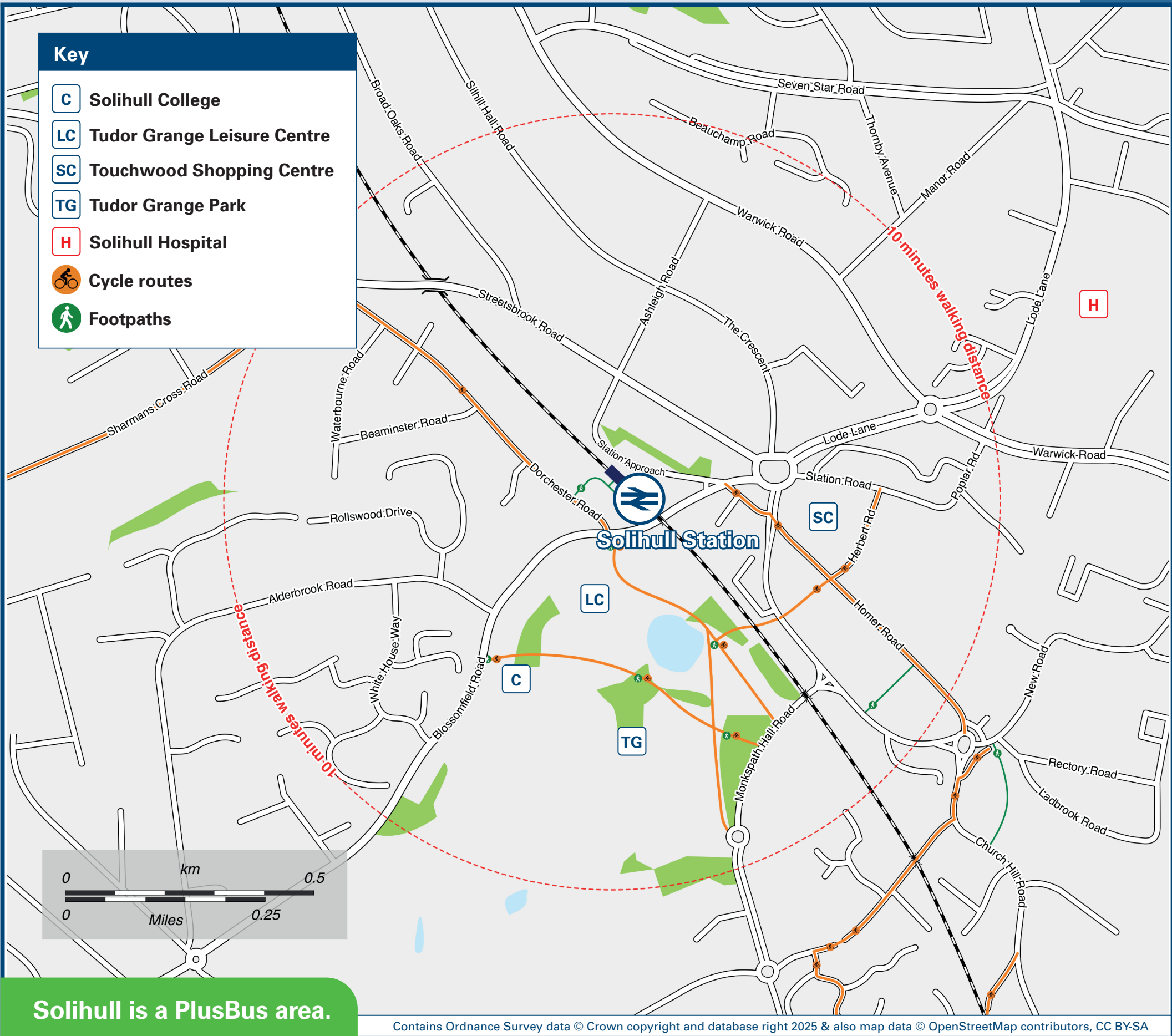
Onward Travel Information

Buses and Taxis



Rail replacement bus services depart from the front of the station on Station Approach Road.

Local area map



Solihull is a PlusBus area.



PlusBus is a discount price 'bus pass' that you buy with your train ticket. It gives you unlimited bus travel around your chosen town, on participating buses. Visit www.plusbus.info

Main destinations by bus

(Data correct at May 2025)



| DESTINATION | BUS ROUTES | BUS STOP |
|---|----------------------------|-------------|
| ● Acock's Green Village | 4A 4 | B D H |
| ● Allesley | 630, 631 | D |
| ● Bacon's End | 82 | D |
| ● Balsall Common | X12 | D |
| ● Bentley Heath | 87 | D |
| | A8 | A |
| | 4A | B |
| ● Birmingham (City Centre) | 4, X2 | C |
| | X12 | F |
| | 6 | H |
| ● Birmingham International Airport and National Exhibition Centre | X12 | F |
| ● Blossomfield (for Solihull College) | A8, A9 49, 76 6, 630 | A D H |
| ● Bordesley | 4A | B |
| ● Bromford | 4, X2 | B |
| ● Castle Bromwich | X12 | F |
| ● Catherine de Bames | X12 | D |
| ● Chelmsley Wood | 82 | D |
| ● Cheswick Green | 72, X12 | F |
| ● Copt Heath | A8 | A |
| ● Cotteridge | A8 | A |
| ● Coventry | 87 | D |
| ● Dickens Heath | 49 | D |
| | 82, 87 | D |
| | 664, 665 | A |
| ● Digbeth (For Birmingham Coach Station) | 4A | B |
| | 4, X2 | C |
| | 6 | H |
| ● Dorridge | A8 | A |
| ● Elmdon Park | 601 | A |
| ● Fox Hollies | X12 | F |
| ● Gospel Oak | 4A | B |
| ● Greet | 4A | B |
| | 4 | C |
| ● Hampton in Arden | 82 | D |
| ● Haslucks Green | 664, 665 | A |
| | 49 | D |
| ● Henley-in-Arden | X20 | B |
| ● Highter's Heath | 664 | A |
| | 49 | D |
| | 72, X2 | F |
| ● Hobs Moat | 72 | D |
| | A9 | F |
| | 631 | H |
| ● Hockley Heath | A8 | A |
| | X20 | B |
| ● Illshaw Heath | A8, A9 | A |
| | X20 | B |

| DESTINATION | BUS ROUTES | BUS STOP |
|----------------------------------|---------------|----------|
| ● Jaguar Land Rover (Lode Lane) | X2 72 | C F |
| | 602 | A |
| ● Kineton Green | 4 | H |
| | 630, 631 | H |
| ● King's Heath | 76 | D |
| ● King's Norton | 169 | F |
| ● Kingshurst | 49 | D |
| ● Kitt's Green | X12 | F |
| | A9 | C |
| | 72 | C |
| | A9 | G |
| ● Knowle | A8 | A |
| | 87 | D |
| ● Lea Hall | 72, A9 | F |
| | 72 | C |
| | 601, 602 | A |
| | 72, X2 | D |
| | 82 | F |
| | 72, X12 | D |
| | A9 | D |
| | 49 | D |
| ● Longbridge | A9 | G |
| ● Lyndon | 631 | H |
| ● Marston Green | 72 | F |
| ● Maypole | 49 | D |
| ● Meriden | 664, 665 | A |
| | 82 | D |
| ● Monkspath | A8, A9 | A |
| | X20 | B |
| ● Olton | 4 | C |
| | A9 | G |
| | 630, 631 | H |
| ● Pickford Green | 82 | D |
| ● Pool Farm | 49 | D |
| ● Queen Elizabeth Hospital | 76 | D |
| ● Robin Hood Island | 76 | D |
| | 6, 630 | H |
| ● Rubery | 49 | D |
| ● Selly Park | 76 | D |
| | 602, 664, 665 | A |
| | 4A, X20 | B |
| | 49 | D |
| ● Sharmans Cross | 630, 631 | H |
| | 72, X2 | F |
| ● Sheldon | 49 | D |
| ● Shirley Rail Station | 664, 665 | A |
| | 4A, X20 | B |
| | 49, 76 | D |
| | 169 | F |
| | 6 | H |
| ● Shirley (Stratford Road shops) | | |

| DESTINATION | BUS ROUTES | BUS STOP |
|--|--|------------------|
| ● Solihull Town Centre (for Solihull Hospital) | 4, 4A 49, 76, 82, 87 72, 169, X2, X12 6, 630, 631, A7, A9 | C D F G |
| ● Sparkbrook | 4A 4 | B C |
| | 6 | H |
| ● Stratford-upon-Avon | X20 | B |
| ● Three Maypoles | 664, 665, A8, A9 X20 | A B |
| | 76 | D |
| | 6 | H |
| ● Tidbury Green | 664, 665 | A |
| ● Tile Cross | 72 | F |
| ● Tile Hill | 87 | D |
| ● Tyseley | 4A | B |
| | 4 | G |
| ● Ulverley Green | 4 | G |
| ● University of Warwick (Interchange) | 87 | D |
| ● Walkers Heath | 49 | D |
| ● West Heath | 49 | D |
| ● Whitlocks End | 664, 665 | A |
| ● Wootton Waven | X20 | B |
| ● Wythall | 664, 665 | A |
| ● Yardley (Swan Centre) | A9 X2 | G F |
| | 76 | D |
| ● Yardley Wood | 169 | F |

Notes

- **PlusBus** destination, please see below for details.
- Bus routes 4, 4A, 6, 49, 72, 76, A5, A8, A9, X2, X12 and X20 run everyday, Mondays to Sundays.
- Bus routes 82, 87, 169, A2, A4 and A12 run Mondays to Saturdays only. No Sunday services.
- Direct trains operate to this destination from this station.
- Change here for connecting National Rail services.
- Change here for connecting domestic and international airline services.

Taxis

Solihull Station is served by a taxi rank or cab office. Check availability before travelling, and pre-book if necessary. Please consider using the following local operators: (Inclusion of this number doesn't represent any endorsement of the taxi firm)

Crown Cars
0121 711 1111

Veezu
0121 744 1111

LetsRide West Midlands
0121 711 4444

Further information about all onward travel

| Local Cycle Info | National Cycle Info | Bus Times | NextBuses | PlusBus |
|--|---|---|---|---|
| networkwestmidlands.com/cycling For more information about cycle routes. | sustrans.org.uk Sustrans is the UK's leading sustainable transport charity. | See timetable displays at bus stops. www.traveline.info 0871 200 22 33 calls cost 15p per minute plus your phone company's access charge | Find the bus times for your stop. Search for a bus stop by entering a postcode, street & town or a stop name & town. | plusbus.info A discount price 'bus pass' that you buy with your train ticket. It gives you unlimited bus travel around your chosen town, on participating buses. |

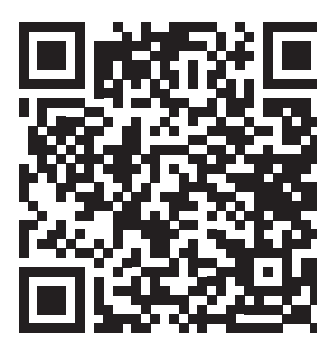
National Rail Enquiries

| Online | NRE App | Social Media | Alert Me | Contact Centre | PlusBike |
|--|--|---|--|--|---|
| nationalrail.co.uk | Free National Rail Enquiries app for iOS and Android | facebook.com/nationalrailenq @nationalrailenq | You can sign up to Alert Me messages on the National Rail Enquiries website where you can receive train and platform notifications directly to your smart phone. nationalrail.co.uk/alertme | 03457 48 49 50 Calls cost no more than calls to geographic numbers (01 or 02) and may be recorded. | nationalrail.co.uk/plusbike For more information. |

Chilternrailways



National Rail
Britain's train companies working together



This poster shows details of popular destinations and main, frequent bus routes. Additional services may run, so please check with Traveline or see posters at local bus stops. Whilst considerable care has been taken to ensure the information contained on this poster is correct and accurate, National Rail cannot accept responsibility for any loss or inconvenience caused by any errors or omissions, or for loss, damage, injury or inconvenience relating to the cancellation, alteration, delay or diversion of a service. For any feedback, please e-mail comments@onwardtravelposters.com

Scan this code with your mobile for full station information.