



Solihull Station

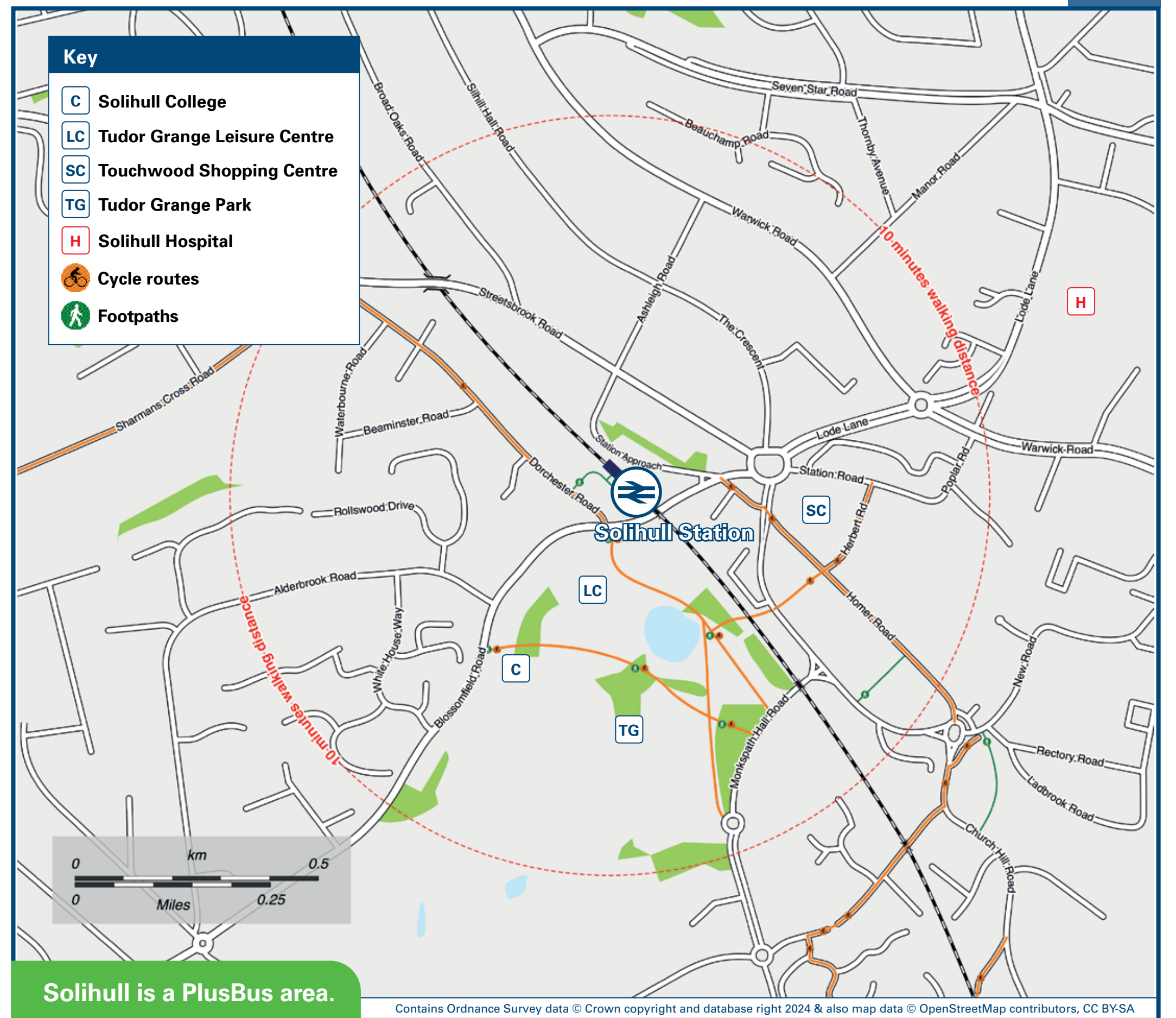
Onward Travel Information

Buses and Taxis



Rail replacement bus services depart from the front of the station on Station Approach Road.

Local area map



Solihull is a PlusBus area.



PlusBus is a discount price 'bus pass' that you buy with your train ticket. It gives you unlimited bus travel around your chosen town, on participating buses. Visit www.plusbus.info

Main destinations by bus

(Data correct at April 2024)



DESTINATION	BUS ROUTES	BUS STOP
Acock's Green Village	4A, 4	B, C
Allesley	A12	C
Bacon's End	82	B
Balsall Common	X12, 87, 88	F, B
Bentley Heath	A8, 4A	A, B
Birmingham (City Centre)	4	C
Birmingham International Airport and National Exhibition Centre	X2, X12	F, H
Birmingham International Airport and National Exhibition Centre	X12	F
Blossomfield (for Solihull College)	A8, A9, 49, 76, 6, A12	A, D, H
Bordesley	X2, 4A	F, B
Bromford	4	C
Castle Bromwich	X12	F
Catherine de Barnes	82	B
Chelmsley Wood	72, X12	F
Cheswick Green	A5, A8	A, A
Copt Heath	A8	A
Cotteridge	87, 88	B, D
Coventry	49	D
Dickens Heath	82, 87	B, A
Digbeth (For Birmingham Coach Station)	A4, A5, 4A, 4	A, C, B
Dorridge	X2, 6	F, H
Fox Hollies	4	C
Gospel Oak	A8, 4A	A, B
Greet	4A, 4	B, C
Hampton in Arden	82	B
Haslucks Green	A4, A5	A, A
Henley-in-Arden	49	D
Highter's Heath	X20	B
Hobs Moat	A4	A
Hockley Heath	49	D
	72, A9, X2	F
	A8	A
	X20	B

DESTINATION	BUS ROUTES	BUS STOP
Ilshaw Heath	A8, A9, X20	A, D
Jaguar Land Rover (Lode Lane)	72, X2	F
Kineton Green	A2, 4	A, C
King's Heath	A12, 76	H, D
King's Norton	169	F
Kingshurst	49	D
Kitt's Green	A9, X12	F
Knowle	72, A9	F
Lea Hall	A8	A
Lode Heath	87, 88	B, A
Longbridge	72, A9	F
Marston Green	72, A9, X2, X12	F, D, B
Maypole	82	B
Meriden	A2	A
Monkspath	49	D
Northfield	72	F
Olton	4	C
Pickford Green	A9	F
Pool Farm	A12	H
Queen Elizabeth Hospital	82	B
Robin Hood Island	49	D
Rubery	6	C
Selly Park	49	D
Sharmans Cross	76	D
Sheldon	6	C
Shirley Rail Station	A2, A4, A5, 4A, X20, A12	A, B, D, H
Shirley (Stratford Road shops)	72, X2, 49	F, D
	A4, A5, 4A, X20, 49, 76, 169, 6	A, B, D, F, H

DESTINATION	BUS ROUTES	BUS STOP
Solihull Town Centre (for Solihull Hospital)	A4, A5, 4, 4A, 49, 76, 72, 169, X2, X12, 6, A12	A, C, D, F, G
Sparkbrook	4A, 4	B, C
Stratford-upon-Avon	6, X20	H, B
Three Maypoles	A4, A5, A8, A9, X20	A, B
Tidbury Green	76	D
Tile Cross	6	H
Tile Hill	A4	A
Tyseley	72	F
Ulverley Green	87	B
Walkers Heath	4A, 4	B, C
West Heath	4	C
Whitlocks End	4	C
Wootton Wawen	4	C
Wythall	A9	F
Yardley (Swan Centre)	A4	A
Yardley Wood	A9, X2, 76, 169	F, D, F

Notes

- PlusBus destination, please see below for details.
- Bus routes 4, 4A, 6, 49, 72, 76, A5, A8, A9, X2, X12 and X20 run everyday, Mondays to Sundays.
- Bus routes 82, 87, 169, A2, A4 and A12 run Mondays to Saturdays only. No Sunday services.
- Direct trains operate to this destination from this station.
- Change here for connecting National Rail services.
- Change here for connecting domestic and international airline services.

Taxis

Solihull Station is served by a taxi rank or cab office. Check availability before travelling, and pre-book if necessary. Please consider using the following local operators: (Inclusion of this number doesn't represent any endorsement of the taxi firm)

Crown Cars
0121 711 1111

Veezu
0121 704 5000

LetsRide West Midlands
0121 711 4444

Further information about all onward travel

Local Cycle Info networkwestmidlands.com/cycling For more information about cycle routes.	National Cycle Info sustrans.org.uk Sustrans is the UK's leading sustainable transport charity.	Bus Times See timetable displays at bus stops. www.traveline.info 0871 200 22 33 calls cost 10p per minute plus your phone company's access charge	NextBuses Find the bus times for your stop. Search for a bus stop by entering a postcode, street & town or a stop name & town.	PlusBus plusbus.info A discount price 'bus pass' that you buy with your train ticket. It gives you unlimited bus travel around your chosen town, on participating buses.
---	---	---	---	---

National Rail Enquiries

Online nationalrail.co.uk	NRE App Free National Rail Enquiries app for iOS and Android	Social Media facebook.com/nationalrailenq @nationalrailenq	Alert Me You can sign up to Alert Me messages on the National Rail Enquiries website where you can receive train and platform notifications directly to your smart phone. nationalrail.co.uk/alertme	Contact Centre 03457 48 49 50 Calls cost no more than calls to geographic numbers (01 or 02) and may be recorded.	PlusBike nationalrail.co.uk/plusbike For more information.
---	--	--	---	--	--



National Rail
Britain's train companies working together

