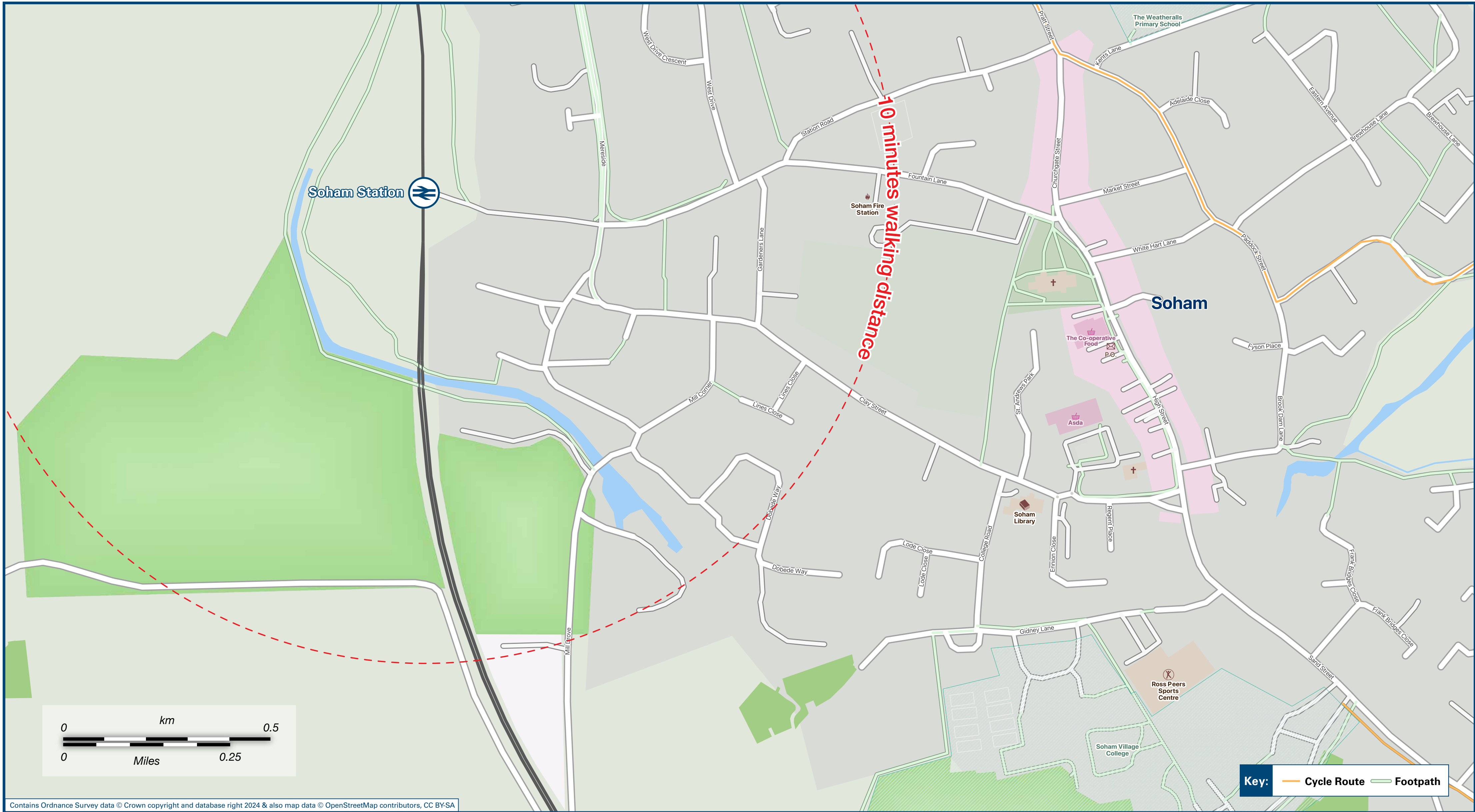




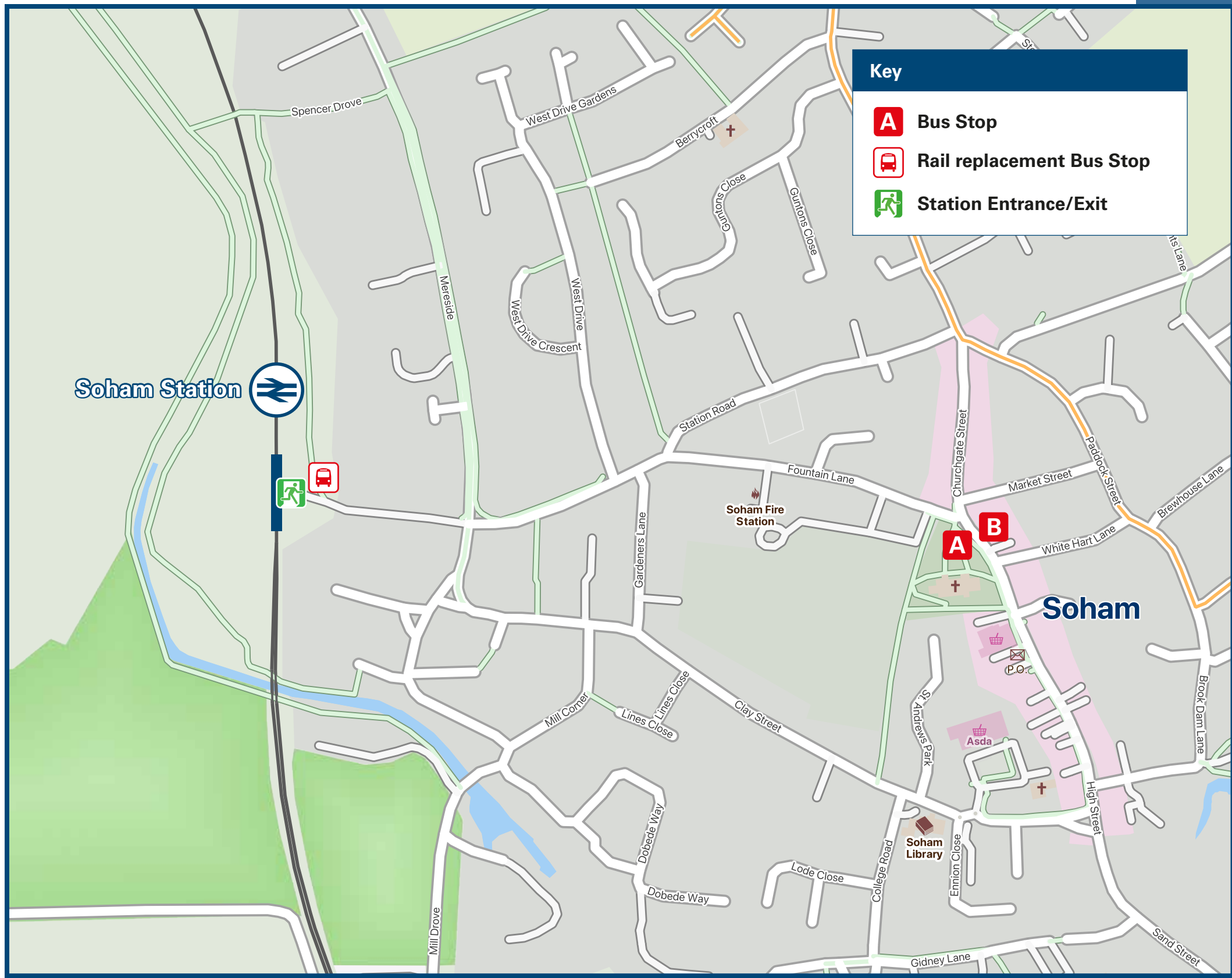
Soham Station

Onward Travel Information

Local area map



Buses



Rail replacement buses/coaches will depart from outside the station by the drop-off/pick-up area.

Main destinations by bus

(Data correct at July 2024)



DESTINATION	BUS ROUTES	BUS STOP
Ely	112	A
Fordham	112	B
Newmarket	112	B
Soham (Downfields, Fordham Road)	112	B
Soham (Townsend, The Birches)	112	A
Soham (Village Centre)	10 minutes walk from this station, see maps for walking route	
Stuntney	112	A

Notes

Bus route 112 operates hourly daytime and early evenings Mondays to Saturdays. No service on Sundays or Bank Holidays.
For bus times and further information, please contact Traveline on 0871 200 22 33 or Stephensons of Essex (for bus route 112) call 01440 704 583.
Direct trains operate to this destination from this station.
Change at Bury St Edmunds for trains to Newmarket

Taxis

Soham Station has no taxi rank or cab office. Advance booking is essential, please consider using the following local operators: (Inclusion of this number doesn't represent any endorsement of the taxi firm)

24/7 Taxis Ely
07778 882 422

Amanda Private Hire
01353 723 516

RCW Private Hire
07843 486 230

Further information about all onward travel

Local Cycle Info	National Cycle Info	Bus Times	NextBuses	PlusBus
ecambs.gov.uk For more information about cycle routes.	sustrans.org.uk Sustrans is the UK's leading sustainable transport charity.	See timetable displays at bus stops. www.traveline.info 0871 200 22 33 calls cost 15p per minute plus your phone company's access charge	Find the bus times for your stop. Search for a bus stop by entering a postcode, street & town or a stop name & town. Calls cost no more than calls to geographic numbers (01 or 02) and may be recorded.	plusbus.info A discount price 'bus pass' that you buy with your train ticket. It gives you unlimited bus travel around your chosen town, on participating buses.

National Rail Enquiries

Online	NRE App	Social Media	Alert Me	Contact Centre	PlusBike
nationalrail.co.uk	Free National Rail Enquiries app for iOS and Android	facebook.com/nationalrailenq @nationalrailenq	You can sign up to Alert Me messages on the National Rail Enquiries website where you can receive train and platform notifications directly to your smart phone. nationalrail.co.uk/alertme	03457 48 49 50 Calls cost no more than calls to geographic numbers (01 or 02) and may be recorded.	nationalrail.co.uk/plusbike For more information.

greateranglia



National Rail
Britain's train companies working together



This poster shows details of popular destinations and main, frequent bus routes. Additional services may run, so please check with Traveline or see posters at local bus stops. Whilst considerable care has been taken to ensure the information contained on this poster is correct and accurate, National Rail cannot accept responsibility for any loss or inconvenience caused by any errors or omissions, or for loss, damage, injury or inconvenience relating to the cancellation, alteration, delay or diversion of a service. For any feedback, please e-mail comments@onwardtravelposters.com

Scan this code with your mobile for full station information.