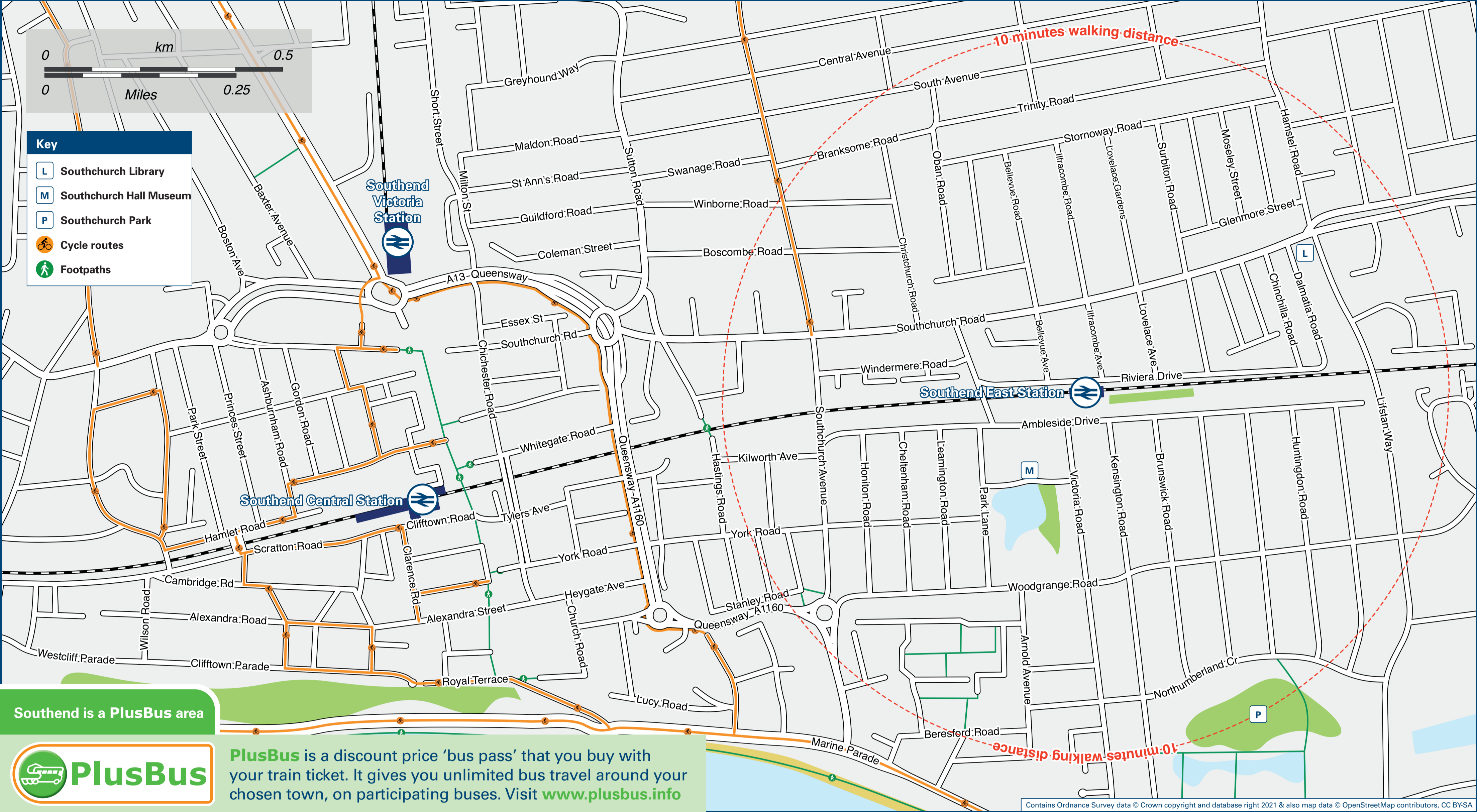




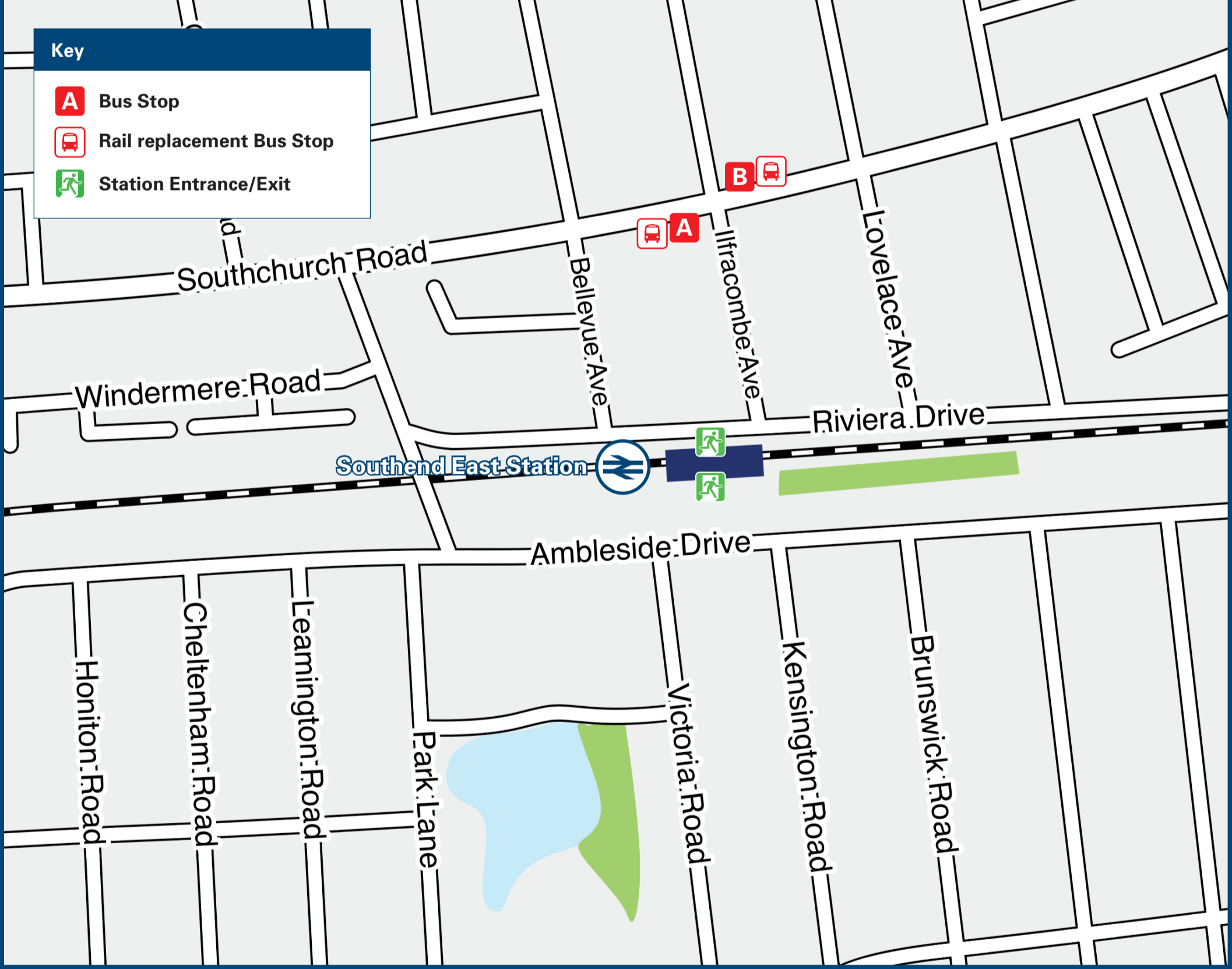
Southend East Station

Onward Travel Information

Local area map



Buses



Rail replacement bus pick up points are at bus stops **A** & **B** on Southchurch Road, north of the station.

Main destinations by bus

(Data correct at March 2023)

DESTINATION	BUS ROUTES	BUS STOP
Barling	14	B
Bournes Green	2, 4A#, 14	B
Great Wakering	4A#, 14	B
Little Wakering	14	B
North Shoebury	2, 4A#, 14	B
Shoeburyness	2, 4A#, 14	B
Southend-on-Sea (Town Centre)	2, 4A#, 14	A
Southend Victoria Station/Interchange	Take the train to Southend Central - then a 10 minute walk to Southend Victoria Station.	
Stonebridge	14	B
Thorpe Bay	2	B

Notes

- PlusBus destination, please see below for details.
- Bus route 2 runs frequent daily services, Mondays to Sundays.
- Bus route 14 runs a limited Mondays to Saturdays service, only. No Sundays service.
- # Bus route 4A runs on Sundays and Bank Holidays, only.
- Change here for connecting National Rail services
- Direct trains operate to this destination from Southend East station

Taxis

Southend East Station has no taxi rank or cab office. Advance booking is essential, please consider using the following local operators: (Inclusion of this number doesn't represent any endorsement of the taxi firm)

Steves Radio Cabs
01702 559 519

Radio Cars
01702 345 678

333 444 Taxis
01702 333 444

Further information about all onward travel

Local Cycle Info

southend.gov.uk
For more information about cycle routes.

National Cycle Info

sustrans.org.uk
Sustrans is the UK's leading sustainable transport charity.

Bus Times

See timetable displays at bus stops.

traveline
public transport info
www.traveline.info
0871 200 22 33
calls cost 15p per minute plus your phone company's access charge

NextBuses

Find the bus times for your stop.
Search for a bus stop by entering a postcode, street & town or a stop name & town.

PlusBus

plusbus.info
A discount price 'bus pass' that you buy with your train ticket. It gives you unlimited bus travel around your chosen town, on participating buses.

National Rail Enquiries

Online

nationalrail.co.uk

NRE App

Free National Rail Enquiries app for iOS and Android

Social Media

facebook.com/nationalrailenq
@nationalrailenq

Alert Me

You can sign up to Alert Me messages on the National Rail Enquiries website where you can receive train and platform notifications directly to your smart phone.
nationalrail.co.uk/alertme

Contact Centre

03457 48 49 50
Calls cost no more than calls to geographic numbers (01 or 02) and may be recorded.

PlusBike

nationalrail.co.uk/plusbike
For more information.



National Rail
Britain's train companies working together

