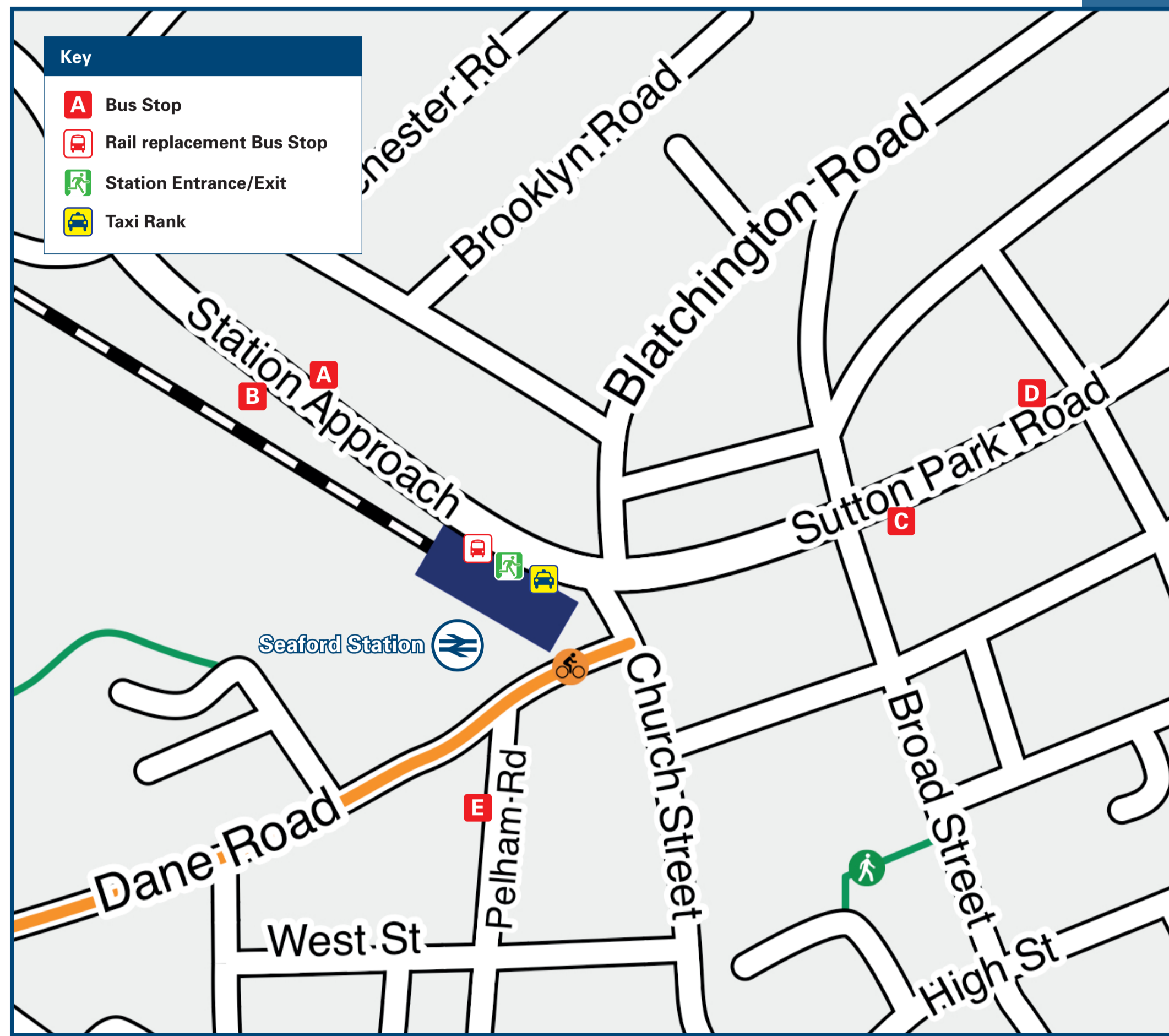




# Seaford Station

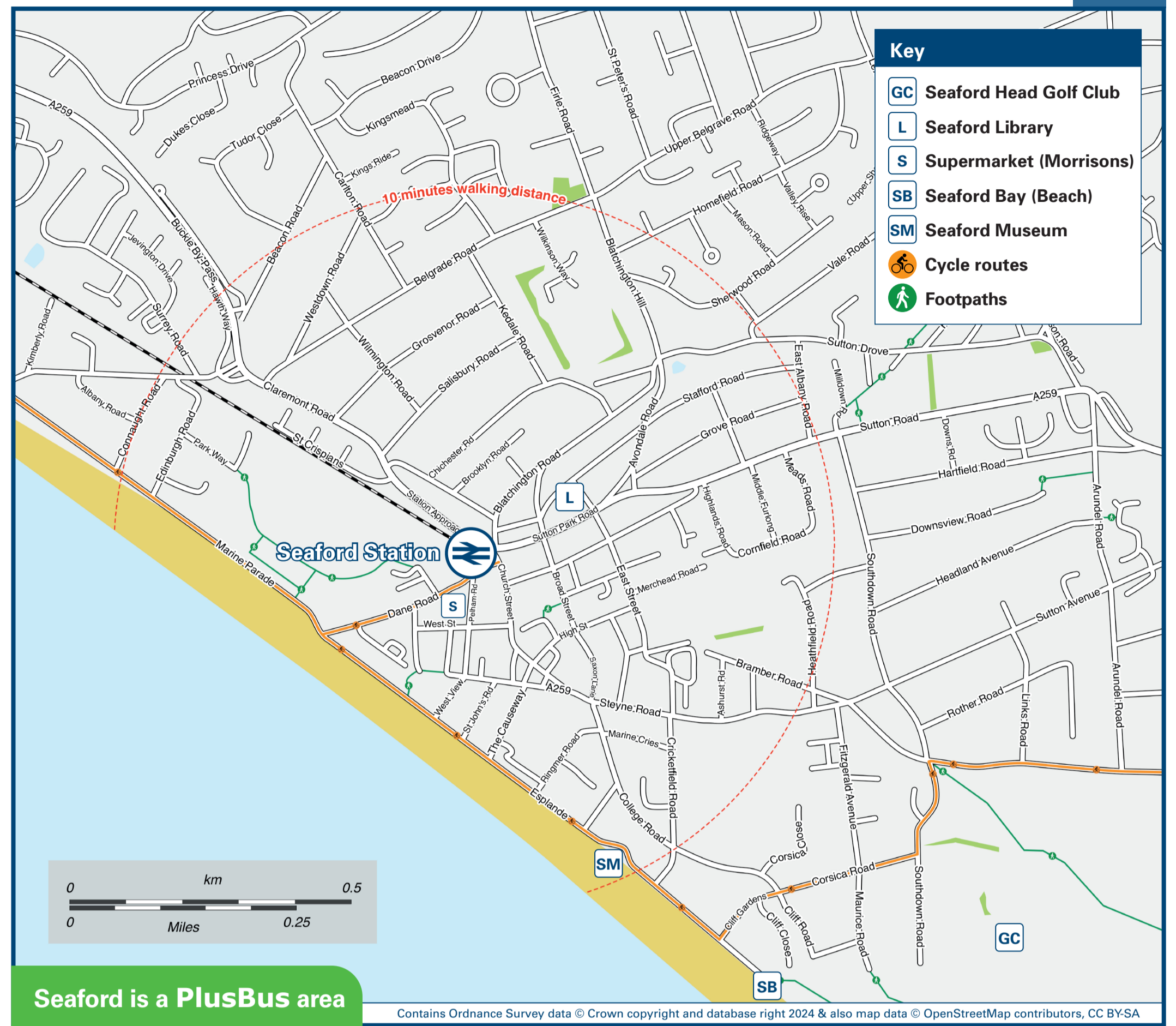
# Onward Travel Information

## Buses and Taxis



Rail replacement buses depart outside the station on Station Approach.

## Local area map



Seaford is a PlusBus area



PlusBus is a discount price 'bus pass' that you buy with your train ticket. It gives you unlimited bus travel around your chosen town, on participating buses. Visit [www.plusbus.info](http://www.plusbus.info)

## Main destinations by bus

(Data correct at June 2024)

DESTINATION	BUS ROUTES	BUS STOP
Alfriston	26*, 126, 119 <sup>A</sup>	D, E, B, E
Beachy Head (Pub)	13X+	D
Berwick Station	40**, 47#, 126 <sup>AA</sup>	D, E
Birling Gap (National Trust)	13X+	D
Bishopstone	12, 12A, 701	B, C, E
Brighton (Clock Tower, for Churchill Square)	12, 12A	B
Brighton (Marine Gate, for Brighton Marina)	12, 12A, 12X, 13X+	B, C
Brighton (Old Steine)	12, 12A, 701	B
Brighton (Paston Place for County Hospital)	12, 12A, 12X, 13X+	B, C
Brighton (Sealife Centre for Brighton Palace Pier)	12, 12A	B
Brighton Station	12, 12A, 12X, 13X+	B, C
Denton Corner	12, 12A, 701	B, C
Drusillas Zoo Park (Berwick)	26*, 40**, 47#, 126 <sup>AA</sup>	D, E
Eastbourne (Old Town)	12, 12A, 701	A
Eastbourne (Town Centre)	12, 12A, 12X, 13X+, 701	D
Eastbourne Pier	13X+	D
East Dean	12, 12A, 701	A
Exceat (Seven Sisters Country Park Centre)	12, 12A, 12X, 13X+, 26*, 701	D
	40**, 47#	D, E

DESTINATION	BUS ROUTES	BUS STOP
Falmer Station (for Amex Stadium, University of Brighton & University of Sussex)	12, 12A, 701	B, C
Friston Forest (West Dean Car Park)	40**, 47#	D, E
Friston Pond	12, 12A, 701	A
Litlington	12, 12A, 12X, 13X+, 701	D
Lullington Corner	40**, 47#	D, E
Moulsecoomb (opp. University of Brighton)	40**, 47#	D, E
Newhaven (Railway Station Interchange)	12, 12A, 701	B, C
Newhaven (South Way)	12, 12A, 701	B
Peacehaven (Roderick Avenue)	12, 12A, 12X, 13X+, 701	B, C
Polegate (Railway Station)	12, 12A	B
Rottingdean (White Horse)	26*	D, E
Saltdean (Longridge Avenue)	12, 12A	B
Seaford (Chyngton Estate / Millberg Road)	12, 12A, 12X, 13X+	C
Seaford (Chyngton Gardens / A259)	12, 12A	B
Seaford (Clementine Avenue)	12, 12A, 12X, 13X+	C
Seaford (Lexden Drive)	12A	A, D
Seaford (Sutton Avenue)	26*, 126	D, E
	12, 12A, 701	A
	12, 12A, 12X, 13X+, 26*, 40**, 47#, 701	D
	40**, 47#	E
Seaford (Sutton Corner)	120	E
	119	B, E
	119	B, E
	12, 701	A
	12, 12X, 13X+, 26*, 40**, 47#, 126, 701	D
	26*, 40**, 47#, 126	E
	119	B

DESTINATION	BUS ROUTES	BUS STOP
Seaford (Upper Belgrave Road)	119	B, E
Seaford (Vale Road)	12A, 119	A, D, B, E
Seven Sisters Country Park Centre (Exceat)	12, 12A, 701, 12, 12A, 12X, 13X+, 40**, 47#, 701	A, D
Telscombe Cliffs	40**, 47#	E
Wilmington (for The Long Man of Wilmington)	12, 12A, 12X, 13X+	B
	26*, 40**, 47#	C, D, E

### Notes

- PlusBus destination, please see below for details.
- Bus routes 12 and 12A operate daily.
- Bus routes 12X, 119, 120, 126 and 701 operate Mondays to Saturdays.
- PlusBus tickets are valid only within the Brighton area PlusBus zone (including Seaford) on all bus routes on this poster.
- For bus times please see bus stop timetables or contact Traveline on 0871 200 22 33.
- + Bus route 13X operates daily in June, July and August and Sundays & Bank Holidays only throughout the year.
- \* Bus route 26 operates Sundays & Bank Holidays only.
- \*\* Bus route 40 operates a limited service Tuesdays and Fridays only.
- # Bus route 47 (Ramblerbus) operates hourly Saturdays, Sundays and Bank Holidays during British Summer Time only.
- ^ Bus route 119 operates at 15:33 Mondays to Fridays and 16:52 on Saturdays only to Alfriston.
- AA Bus route 126 operates at 12:20 and 17:20 Mondays to Fridays and 13:20 on Saturdays only to this destination.
- Direct trains operate to this destination from this station.
- Change at Berwick station for trains to & from Brighton, Lewes, Eastbourne, Hastings & Ore.
- National Park South Downs National Park [www.southdowns.gov.uk](http://www.southdowns.gov.uk)

## Taxis

Seaford station is served by a taxi rank or cab office. Check availability before travelling, and pre-book if necessary. Please consider using the following local operators: (Inclusion of this number doesn't represent any endorsement of the taxi firm)

**Martello Taxis**  
01323 899 774

**Seaford Taxis**  
01323 896 666

**Seahaven Cabs**  
01323 892 223

## Further information about all onward travel

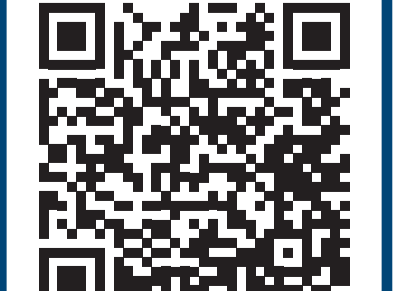
<b>Local Cycle Info</b> <a href="http://lewes.gov.uk">lewes.gov.uk</a> For more information about cycle routes.	<b>National Cycle Info</b> <a href="http://sustrans.org.uk">sustrans.org.uk</a> Sustrans is the UK's leading sustainable transport charity.	<b>Bus Times</b> See timetable displays at bus stops.  <a href="http://www.traveline.info">www.traveline.info</a> 0871 200 22 33 call cost 12p per minute plus your phone company's access charge	<b>NextBuses</b> Find the bus times for your stop. Search for a bus stop by entering a postcode, street & town or a stop name & town.	<b>PlusBus</b> <a href="http://plusbus.info">plusbus.info</a> A discount price 'bus pass' that you buy with your train ticket. It gives you unlimited bus travel around your chosen town, on participating buses.
---	---	--	---	---

## National Rail Enquiries

<b>Online</b> <a href="http://nationalrail.co.uk">nationalrail.co.uk</a>	<b>NRE App</b> Free National Rail Enquiries app for iOS and Android	<b>Social Media</b> facebook.com/nationalrailenq @nationalrailenq	<b>Alert Me</b> You can sign up to Alert Me messages on the National Rail Enquiries website where you can receive train and platform notifications directly to your smart phone. <a href="http://nationalrail.co.uk/alertme">nationalrail.co.uk/alertme</a>	<b>Contact Centre</b> 03457 48 49 50 Calls cost no more than calls to geographic numbers (01 or 02) and may be recorded.	<b>PlusBike</b> <a href="http://nationalrail.co.uk/plusbike">nationalrail.co.uk/plusbike</a> For more information.
---	--	---	---	--	--



**National Rail**  
Britain's train companies working together



This poster shows details of popular destinations and main, frequent bus routes. Additional services may run, so please check with Traveline or see posters at local bus stops. Whilst considerable care has been taken to ensure the information contained on this poster is correct and accurate, National Rail cannot accept responsibility for any loss or inconvenience caused by any errors or omissions, or for loss, damage, injury or inconvenience relating to the cancellation, alteration, delay or diversion of a service. For any feedback, please e-mail [comments@onwardtravelposters.com](mailto:comments@onwardtravelposters.com)

Scan this code with your mobile for full station information.