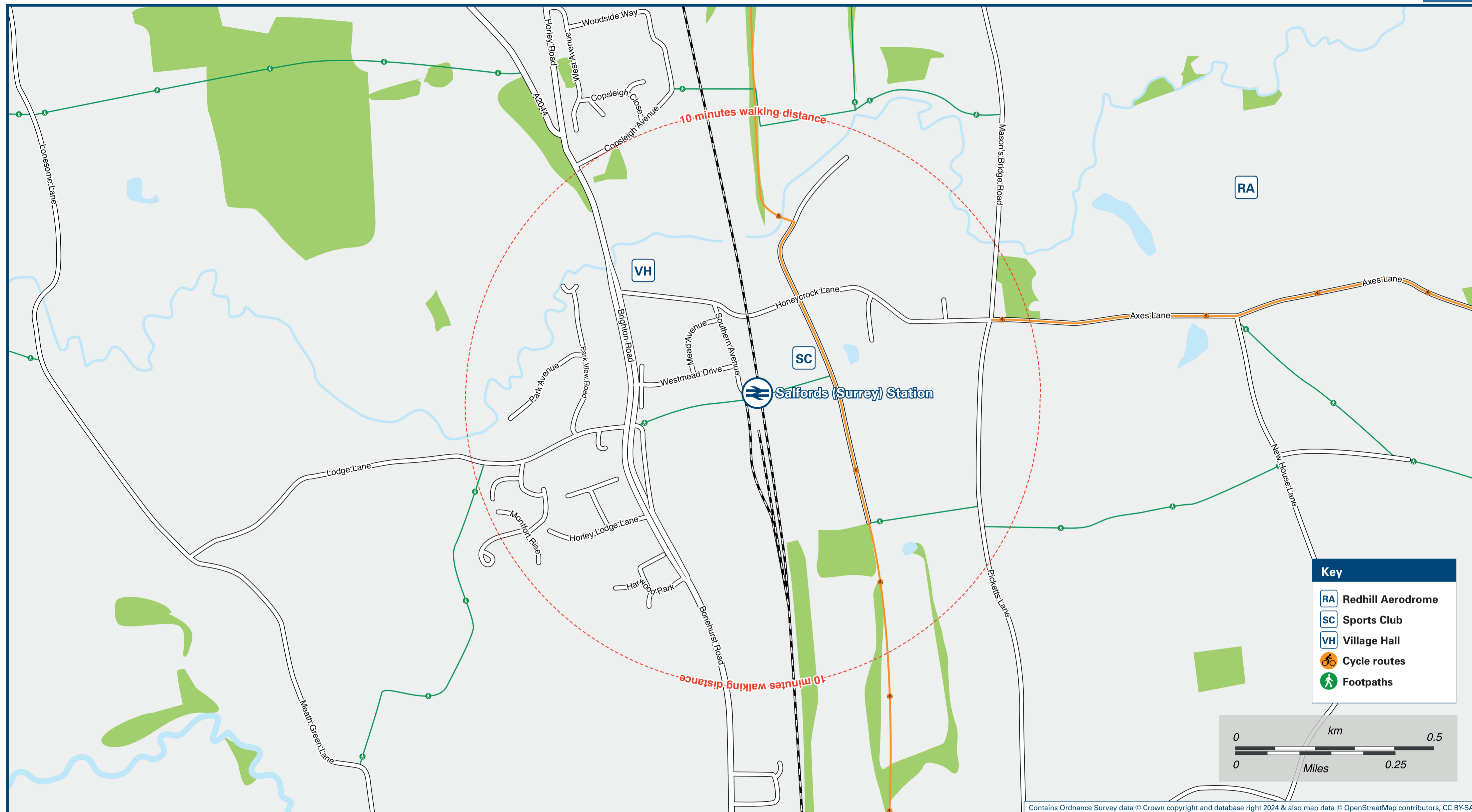




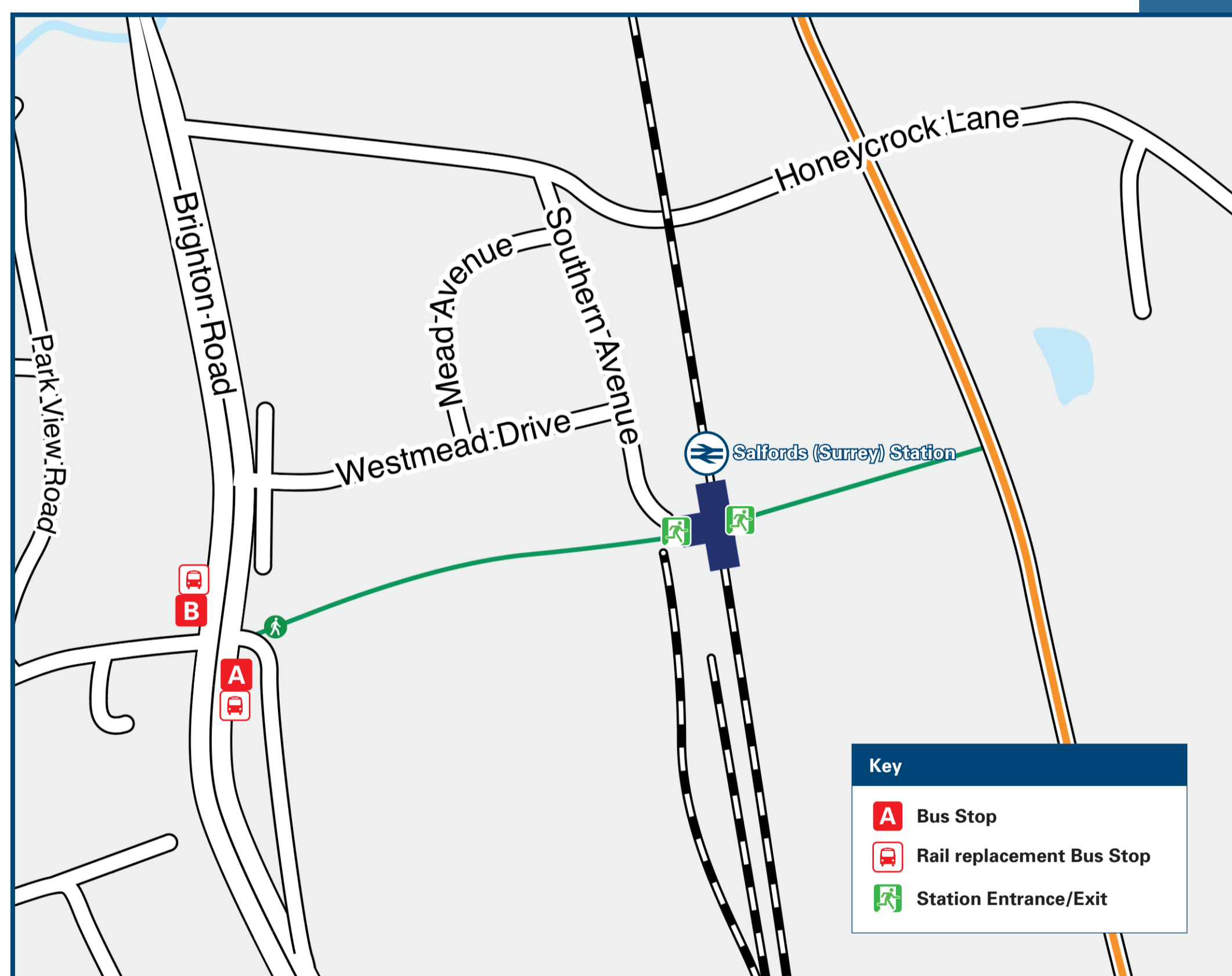
Salfords (Surrey) Station

Onward Travel Information

Local area map



Buses



Rail replacement buses depart from existing bus stops on the A23 Brighton Road (see Buses map).

Main destinations by bus

(Data correct at May 2024)

DESTINATION	BUS ROUTES	BUS STOP
Copthorne Village	400	A
Crawley	100, 400, 420*, 460	A
Earlswood	100, 400, 420+, 460	B
East Grinstead	400	A
East Surrey Hospital	100, 400, 420+, 460	B
Gatwick Airport	100, 400, 420#, 460	A
Horley (Brighton Road/A23)	100, 400, 420#, 460	A
Horley (Town Centre/Lidl)	100	A
Maidenbower	100	A
Manor Royal	100, 400, 420*, 460	A
Meath Green	100	A
Petridgewood Common	100, 400, 420+, 460	B
Povey Cross	100	A
Redhill	100, 400, 420+, 460	B
Reigate	420+, 460	B
Three Bridges	100, 400	A
Whitebushes	420+, 460	B

Notes

Bus routes 100, 400 and 460 operate daily.
 For bus times and other bus service enquiries, please contact TraveLine on 0871 200 22 33 or contact the bus operator: Metrobus on 01293 449 191.

Direct trains operate to this destination from this station

* Bus route 420 operates Sundays and Public Holidays only to Crawley and Manor Royal.

+ Bus route 420 operates Saturday early mornings and daytime on Sundays and Public Holidays only to this destination.

Bus route 420 operates Monday to Saturday evenings and Sundays and Public Holidays only to this destination.

Taxis

Salfords Station has no taxi rank or cab office. Advance booking is essential, please consider using the following local operators: (Inclusion of this number doesn't represent any endorsement of the taxi firm)

Belfry Cars
01737 766 111

Roadrunners
01293 821 100

Carline DSM
01293 430 430

Further information about all onward travel

Local Cycle Info reigate-banstead.gov.uk For more information about cycle routes.	National Cycle Info sustrans.org.uk Sustrans is the UK's leading sustainable transport charity.	Bus Times See timetable displays at bus stops. www.traveline.info 0871 200 22 33 call cost 13p per minute plus your phone company's access charge	NextBuses Find the bus times for your stop. Search for a bus stop by entering a postcode, street & town or a stop name & town.	PlusBus plusbus.info A discount price 'bus pass' that you buy with your train ticket. It gives you unlimited bus travel around your chosen town, on participating buses.
---	---	--	--	--

National Rail Enquiries

Online nationalrail.co.uk	NRE App Free National Rail Enquiries app for iOS and Android	Social Media facebook.com/nationalrailenq @nationalrailenq	Alert Me You can sign up to Alert Me messages on the National Rail Enquiries website where you can receive train and platform notifications directly to your smart phone. nationalrail.co.uk/alertme	Contact Centre 03457 48 49 50 Calls cost no more than calls to geographic numbers (01 or 02) and may be recorded.	PlusBike nationalrail.co.uk/plusbike For more information.
---	--	---	---	--	--



National Rail
Britain's train companies working together

