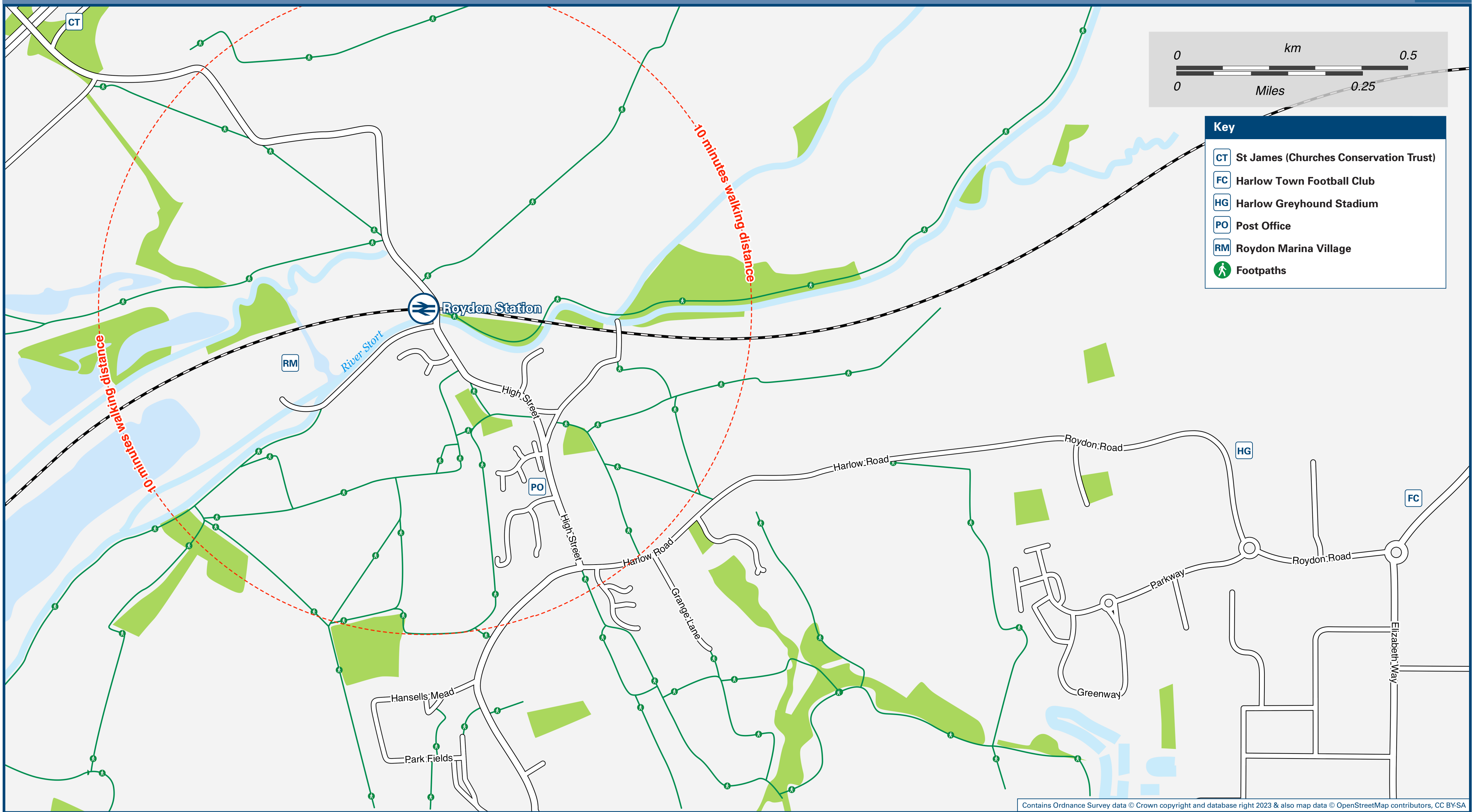




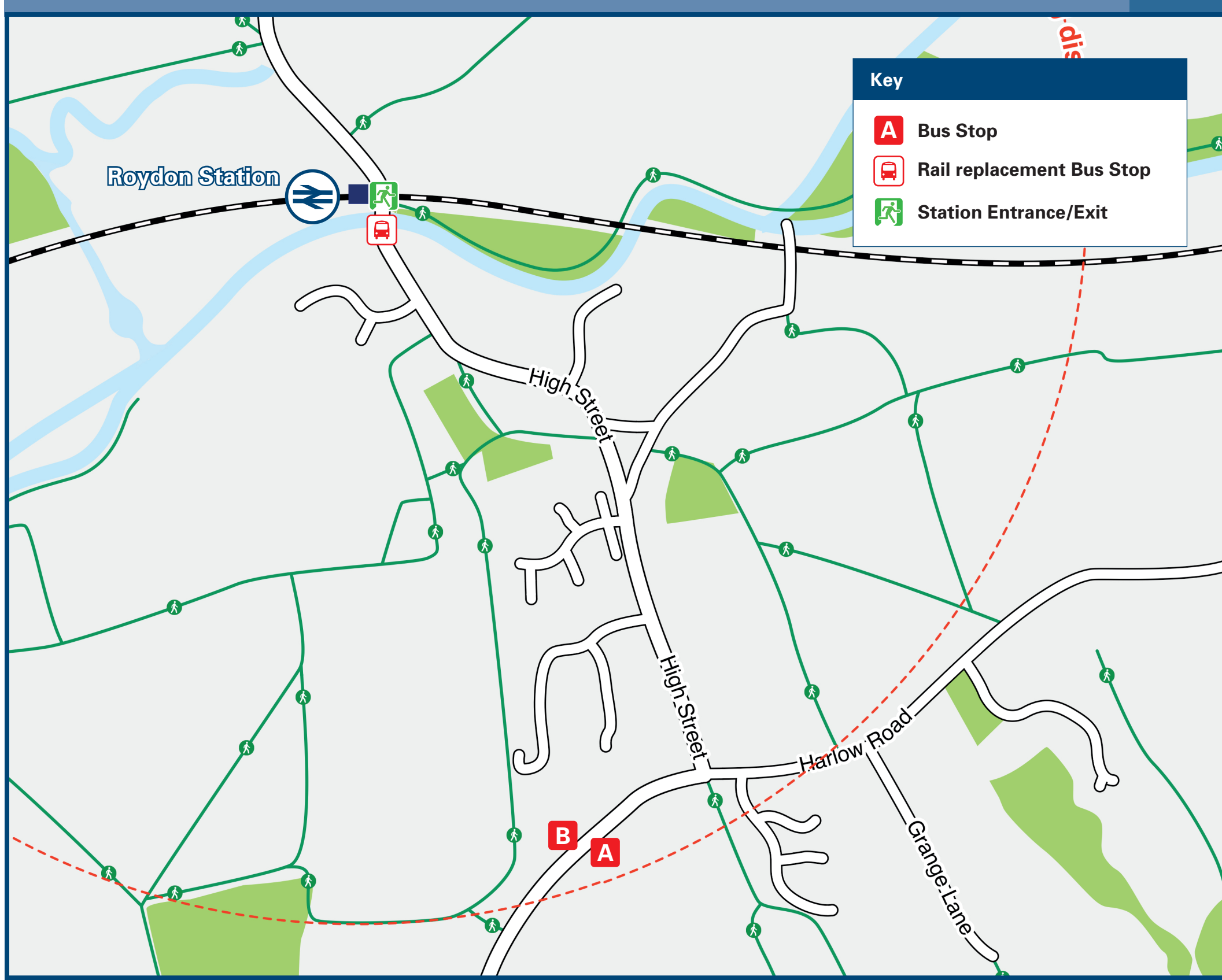
Roydon Station

Onward Travel Information

Local area map



Buses



Rail replacement transport stop at the Station entrance, by level crossing.

Main destinations by bus

(Data correct at August 2023)

DESTINATION	BUS ROUTES	BUS STOP
Broadley Common	31	A
Coopersale	31	A
Epping	31	A
Epping Green	31	A
Fiddlers Hamlet	31	A
Harlow (Town Centre)	31	B
Tylers Cross	31	A

Notes

THERE ARE NO REGULAR BUS SERVICES FROM ROYDON STATION. A LIMITED BUS SERVICE OPERATES FROM ROYDON VILLAGE AS SHOWN.

Bus route 31 operates every 2 hours daytime and early evenings Mondays to Saturdays. There are less journeys on Saturdays.

For bus times and other bus service enquiries, please contact Traveline on 0871 200 22 33 or contact the bus operator (see below):

Vectare Ltd. (for bus route 31) www.localbus.vectare.co.uk/support or call 0115 777 3087.

Direct trains operate to this destination from this station.

Taxis

Roydon Station has no taxi rank or cab office. Advance booking is essential, please consider using the following local operators: (Inclusion of this number doesn't represent any endorsement of the taxi firm)

Kestral Cabs
01920 877 700

Town Taxis
01279 438 888

ABC Cars
01279 300 900.

Further information about all onward travel

Local Cycle Info eppingforestdc.gov.uk <small>For more information about cycle routes.</small>	National Cycle Info sustrans.org.uk <small>Sustrans is the UK's leading sustainable transport charity.</small>	Bus Times <small>See timetable displays at bus stops.</small> www.traveline.info 0871 200 22 33 <small>calls cost 13p per minute plus your phone company's access charge</small>	NextBuses Find the bus times for your stop. <small>Search for a bus stop by entering a postcode, street & town or a stop name & town.</small>	PlusBus plusbus.info <small>A discount price 'bus pass' that you buy with your train ticket. It gives you unlimited bus travel around your chosen town, on participating buses.</small>
--	--	--	--	---

National Rail Enquiries

Online nationalrail.co.uk	NRE App Free National Rail Enquiries app for iOS and Android	Social Media facebook.com/nationalrailenq @nationalrailenq	Alert Me <small>You can sign up to Alert Me messages on the National Rail Enquiries website where you can receive train and platform notifications directly to your smart phone.</small> nationalrail.co.uk/alertme	Contact Centre 03457 48 49 50 <small>Calls cost no more than calls to geographic numbers (01 or 02) and may be recorded.</small>	PlusBike nationalrail.co.uk/plusbike <small>For more information.</small>
---	---	--	--	--	--



National Rail
Britain's train companies working together



This poster shows details of popular destinations and main, frequent bus routes. Additional services may run, so please check with Traveline or see posters at local bus stops. Whilst considerable care has been taken to ensure the information contained on this poster is correct and accurate, National Rail cannot accept responsibility for any loss or inconvenience caused by any errors or omissions, or for loss, damage, injury or inconvenience resulting from the cancellation, alteration, delay or diversion of a service. For any feedback, please e-mail comments@onwardtravelposters.com

Scan this code with your mobile for full station information.