



# Rochester Station

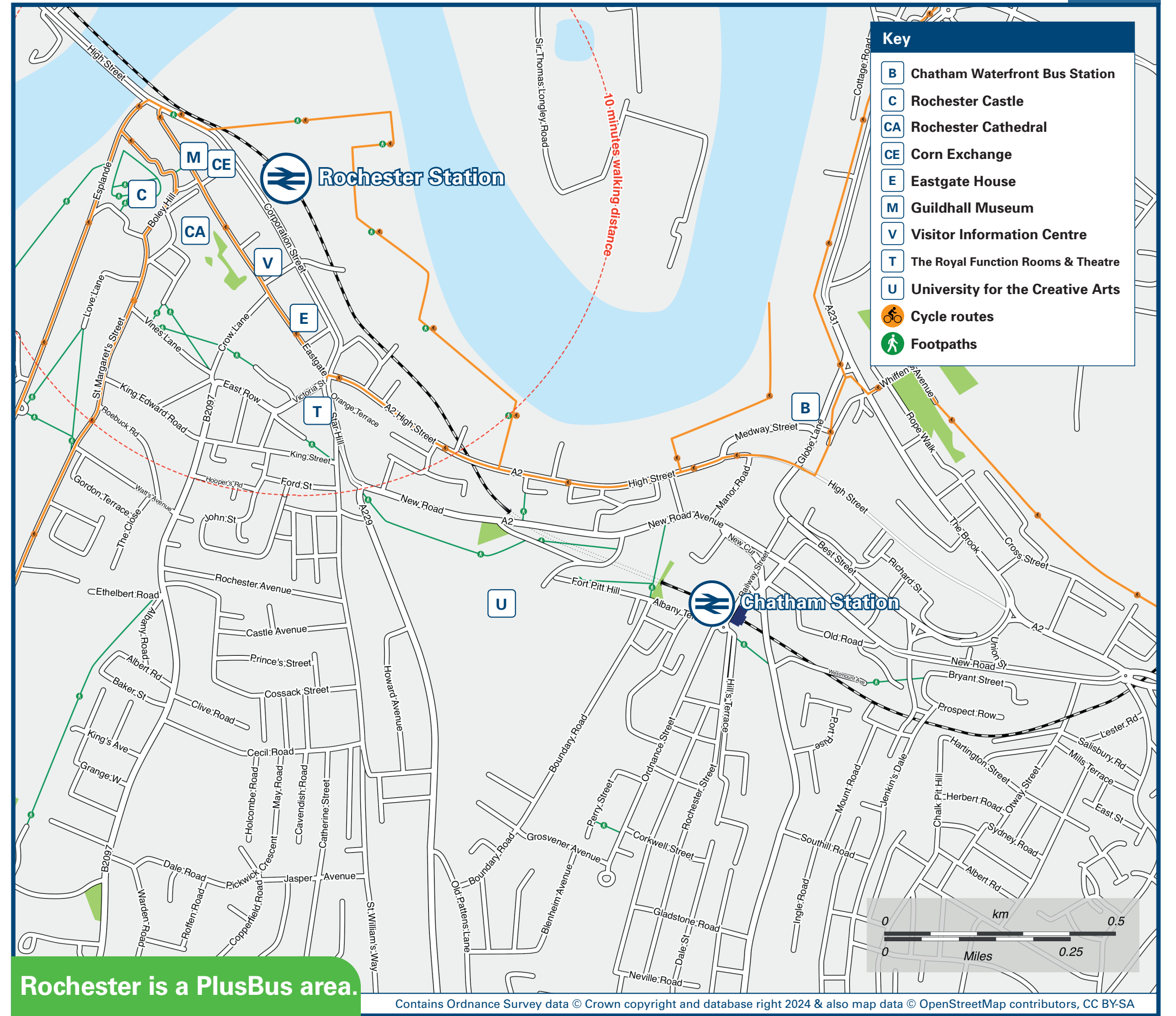
# Onward Travel Information

## Buses and Taxis



Rail replacement buses depart from bus stop {D} outside the station on Corporation Street, towards Gillingham; from bus stop {E} opposite the station on Corporation Street, towards Strood or Meopham.

## Local area map



Rochester is a PlusBus area.



PlusBus is a discount price 'bus pass' that you buy with your train ticket. It gives you unlimited bus travel around your chosen town, on participating buses. Visit [www.plusbus.info](http://www.plusbus.info)

## Main destinations by bus

(Data correct at July 2024)



DESTINATION	BUS ROUTES	BUS STOP
Allhallows-on-Sea (for Kingsmead Caravan Park)	191	E
Bluewater	700	E
● Borstal	155	K
Chalk	190	E
● Chatham (Bus Station) ⇄	133, 140, 141#, 151, 170, 190, 191, 193*, 197, 700	D
● Chatham Maritime	151	D
● Chattenden	191, 193*	E
Cliffe (for RSPB Cliffe Pools)	133, 193*	E
● Cliffe Woods	133, 193*	E
● Cuxton ⇄	151	E
Denton	190	E
● Earl Estate	140, 141#, 700	E

DESTINATION	BUS ROUTES	BUS STOP
Fenn Street	191	E
● Frindsbury	133, 190, 191, 193*, 197	E
Grain (Isle of Grain)	191	E
Gravesend ⇄	190	E
● Halling ⇄	151	E
● Higham ⇄	190	E
High Halstow	191, 193*	E
● Hoo Marina	191	E
● Hoo St Werburgh	191, 193*	E
Lower Stoke	191	E
● Marlowe Park	140	E
● Medway Valley Park (for Cinema)	151, 170	E
Snodland ⇄	151	E

DESTINATION	BUS ROUTES	BUS STOP
● Strood ⇄	133, 140, 141#, 151, 170, 190, 191, 193*, 197, 700	E
Upnor (for Upnor Castle)	197	E
Upper Halling	151	E
● Wainscott	133, 191, 193*, 197	E

### Notes

- PlusBus destination, please see below for details.
- Bus routes 140, 151, 155, 190, 191 & 700 operate everyday Mondays to Sundays.
- Bus routes 197 operates a limited service Mondays to Saturdays only. No Sunday services.
- Bus route 133 operates on Mondays to Saturdays, only.
- ⇄ Direct trains operate to this destination from this station.
- ⇄ Direct trains operate from Strood to this destination.
- \* Bus route 193 operates Sundays and Bank Holidays only.
- # Bus route 141 operates a limited morning Mondays to Saturdays service, and an evening Sunday service, only.

## Taxis

Rochester Station is served by a taxi rank or cab office. Check availability before travelling, and pre-book if necessary. Please consider using the following local operators: (Inclusion of this number doesn't represent any endorsement of the taxi firm)

**Strood Cabs**  
01634 710 001

**Computer Cabs**  
01634 666 666

**Voke Taxis**  
01634 222 222

## Further information about all onward travel

<b>Local Cycle Info</b> <a href="http://medway.gov.uk">medway.gov.uk</a> For more information about cycle routes.	<b>National Cycle Info</b> <a href="http://sustrans.org.uk">sustrans.org.uk</a> Sustrans is the UK's leading sustainable transport charity.	<b>Bus Times</b> See timetable displays at bus stops.  <a href="http://www.traveline.info">www.traveline.info</a> 0871 200 22 33 call cost 13p per minute, plus your phone company's access charge	<b>NextBuses</b> Find the bus times for your stop. Search for a bus stop by entering a postcode, street & town or a stop name & town.	<b>PlusBus</b> <a href="http://plusbus.info">plusbus.info</a> A discount price 'bus pass' that you buy with your train ticket. It gives you unlimited bus travel around your chosen town, on participating buses.
---	---	---	---	---

## National Rail Enquiries

<b>Online</b> <a href="http://nationalrail.co.uk">nationalrail.co.uk</a>	<b>NRE App</b> Free National Rail Enquiries app for iOS and Android	<b>Social Media</b> facebook.com/nationalrailenq @nationalrailenq	<b>Alert Me</b> You can sign up to Alert Me messages on the National Rail Enquiries website where you can receive train and platform notifications directly to your smart phone. <a href="http://nationalrail.co.uk/alertme">nationalrail.co.uk/alertme</a>	<b>Contact Centre</b> 03457 48 49 50 Calls cost no more than calls to geographic numbers (01 or 02) and may be recorded.	<b>PlusBike</b> <a href="http://nationalrail.co.uk/plusbike">nationalrail.co.uk/plusbike</a> For more information.
---	--	---	---	--	--



**National Rail**  
Britain's train companies working together

