



Rayleigh Station

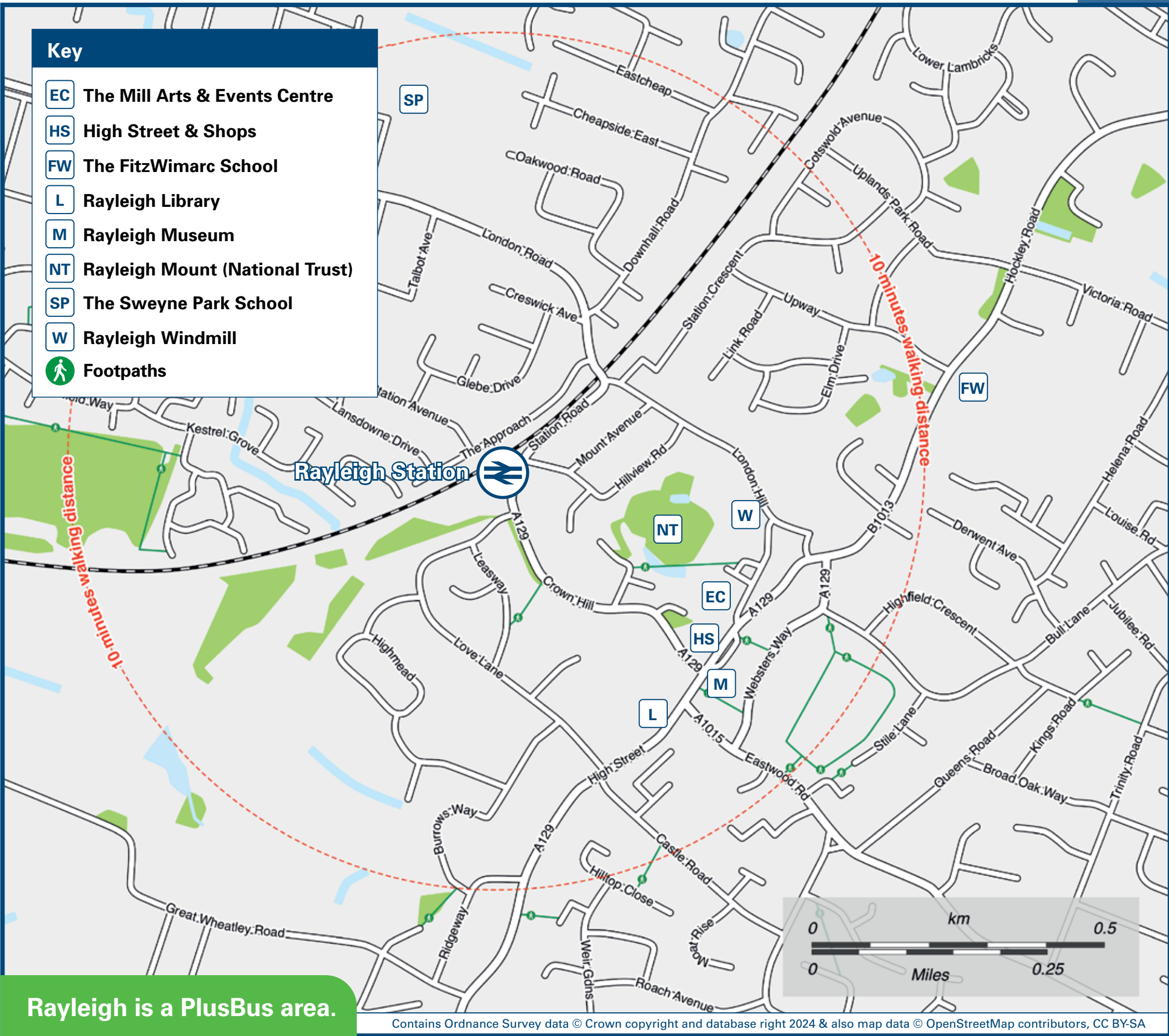
Onward Travel Information

Buses and Taxis



In the event of engineering work, the bus or coach will collect from the forecourt off Station Road at the front of the station.

Local area map



PlusBus is a discount price 'bus pass' that you buy with your train ticket. It gives you unlimited bus travel around your chosen town, on participating buses. Visit www.plusbus.info

Main destinations by bus

(Data correct at September 2024)



DESTINATION	BUS ROUTES	BUS STOP
Ashingdon	7	A
Barnston	X30	C
Basildon	25	C
Battlesbridge	3	C
Broomfield Hospital	X30#	C
Chalkwell	1	A
	3	B
Chelmsford	3, X30	C
Daws Heath	3	B
East Hanningfield	3	C
Eastwood	9, 9A	A
	20, 25, X30	B
Great Dunmow	X30#	C
Great Wakering	9A	A
Hadleigh	1	A
	3	B
Hawkwell	8	A
Hockley	7, 8	A
Howe Green	3	C
Hullbridge	20	C

DESTINATION	BUS ROUTES	BUS STOP
Leigh-on-Sea	1	A
	3, 20, 25, X30	B
North Shoebury (Shoebury Asda)	7, 8, 9, 9A	A
Prittlewell	7, 8, 9, 9A	A
	3, 20, 25, X30#	B
Rawreth	3, 25	C
Rayleigh Town Centre (Eastwood Road)	X30	B
Rayleigh Town Centre (High Street)	1, 7, 8, 9, 9A	A
	3, 20, 25	B
Rayleigh (Wolsey Park)	X30	C
Rettendon	3	C
Rochford	7, 8	A
Sandon	3	C
Shoeburyness	9	A
Shotgate	25	C
South Benfleet	1	A
	7, 8, 9, 9A	A
	X30#	B
Southend Airport	7, 8	A
	3, 20, 25, X30#	B
Southend Hospital		

DESTINATION	BUS ROUTES	BUS STOP
Southend Town Centre	1, 7, 8, 9, 9A	A
	3, 20, 25, X30	B
Stansted Airport	X30	C
Thorpe Bay Station	7, 8	A
Thorpe Bay (Thorpe Esplanade)	9, 9A	A
Thundersley	1	A
	3	B
Westcliff-on-Sea	1	A
Wickford	25	C

Notes

- PlusBus destination, please see below for details.
- Bus routes 1, 7, 9, 20, 25 and X30 operate daily.
- Bus route 3, 8 and 9A operate Mondays to Saturdays only. No service on Sundays or Bank Holidays.
- For bus times and further information contact Traveline on 0871 200 322 33 or Arriva (for bus routes 1, 7, 8, 9 & 9A) call 0344 800 44 11 or First Essex (for bus route 3, 20, 25 & X30) call 0345 646 0707.
- Direct trains operate to this destination from this station
- It's a 10 minutes walk from this station to Rayleigh town centre, see Local area map.
- Not all X30 journeys call at this destination, please check the timetable before travelling.
- Alight bus routes 7 and 8 at Prittlewell Warners Bridge and routes 9, 9A and X30# at the Holiday Inn for Southend Airport.

Taxis

Rayleigh Station is served by a taxi rank or cab office. Check availability before travelling, and pre-book if necessary. Please consider using the following local operators: (Inclusion of this number doesn't represent any endorsement of the taxi firm)

Cab Call
01268 778 000

Bestax Taxi
01268 777 300

Cab Call
01268 778 000

Pall Mall Premier Cars
01268 776 568

Further information about all onward travel

Local Cycle Info

rochford.gov.uk

For more information about cycle routes.

National Cycle Info

sustrans.org.uk

Sustrans is the UK's leading sustainable transport charity.

Bus Times

See timetable displays at bus stops.

www.traveline.info
0871 200 22 33
calls cost 15p per minute plus your phone company's access charge

NextBuses

Find the bus times for your stop. Search for a bus stop by entering a postcode, street & town or a stop name & town.

PlusBus

plusbus.info

A discount price 'bus pass' that you buy with your train ticket. It gives you unlimited bus travel around your chosen town, on participating buses.

National Rail Enquiries

Online

nationalrail.co.uk

NRE App

Free National Rail Enquiries app for iOS and Android

Social Media

facebook.com/nationalrailenq
@nationalrailenq

Alert Me

You can sign up to Alert Me messages on the National Rail Enquiries website where you can receive train and platform notifications directly to your smart phone.
nationalrail.co.uk/alertme

Contact Centre

03457 48 49 50
Calls cost no more than calls to geographic numbers (01 or 02) and may be recorded.

PlusBike

nationalrail.co.uk/plusbike
For more information.

greateranglia



National Rail
Britain's train companies working together

