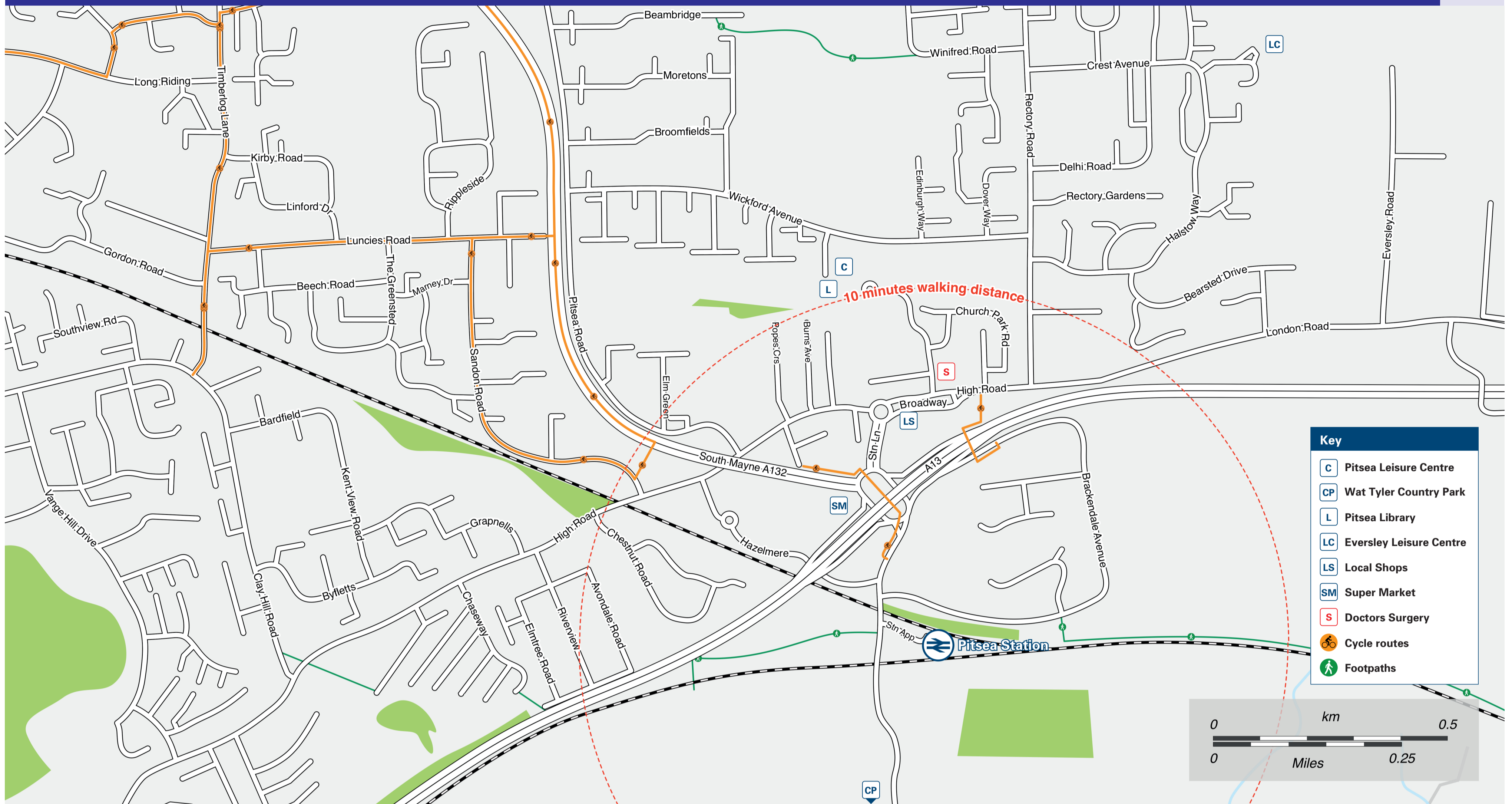




Onward Travel Information

Pitsea Station

Local area map



Buses and Taxis



c2c Rail replacement on the Station Approach outside the Station Entrance.

Main destinations by bus

(Data correct at March 2026)



DESTINATION	BUS ROUTES	BUS STOP
Basildon	1A#	Stop 1
	B3, B4	Stop 2
	21, 22, 28	Stop 3
Basildon Hospital	21	Stop 3
Bowers Gifford	22, 28	Stop 1
Canvey	21	Stop 2
Chalkwell	22	Stop 1
Felmores	28	Stop 1
Hadleigh	B3	Stop 2
Leigh-on-Sea	28	Stop 1
North Benfleet	21	Stop 2
South Benfleet	22, 28	Stop 1
Southend-on-Sea (Town Centre)	28	Stop 1
Vange	21, 22, 28	Stop 3
Westcliff-on-Sea	28	Stop 1

NOTES

Bus route 21 runs a daytime Mondays to Saturdays service, only. No Evenings, or Sunday service.
Bus routes 22, 28, B3 and B4 run daily services, Mondays to Sundays.

For bus times and days of operation please contact TraveLine on www.traveLine.info or call: 0871 200 22 33

Direct trains operate to this destination from this station.

Bus route 1A operates a limited daytime service on Saturdays, only.

Taxis

Pitsea Station is served by a taxi rank or a cab office. Check availability before travelling, and pre-book if necessary. Please consider using the following local operators: (Inclusion of this number doesn't represent any endorsement of the taxi firm)

A & B Taxi
01268 555 555

Value Cars
01268 525 252

Taxis Transfers Basildon
07743 477 600

Further information about all onward travel

Local Cycle Info

basildon.gov.uk

For more information about cycle routes.

National Cycle Info

walkwheelcycletrust.org.uk

Bus Times

See timetable displays at bus stops.

www.traveLine.info
0871 200 22 33
public transport info
please your phone company's access charge



PlusBus



plusbus.info

PlusBus is a discount price 'bus pass' that you buy with your train ticket. It gives you unlimited bus travel around your chosen town, on participating buses. Visit plusbus.info

National Rail Enquiries

Online	NRE App	Social Media	Alert Me	Contact Centre	PlusBike
nationalrail.co.uk	Free National Rail Enquiries app for iOS and Android	facebook.com/nationalrailenq @nationalrailenq	nationalrail.co.uk/alertme You can sign up to Alert Me messages on the National Rail Enquiries website where you can receive train and platform notifications directly to your smart phone.	03457 48 49 50 Calls cost no more than calls to geographic numbers (01 or 02) and may be recorded.	nationalrail.co.uk/plusbike For more information.

