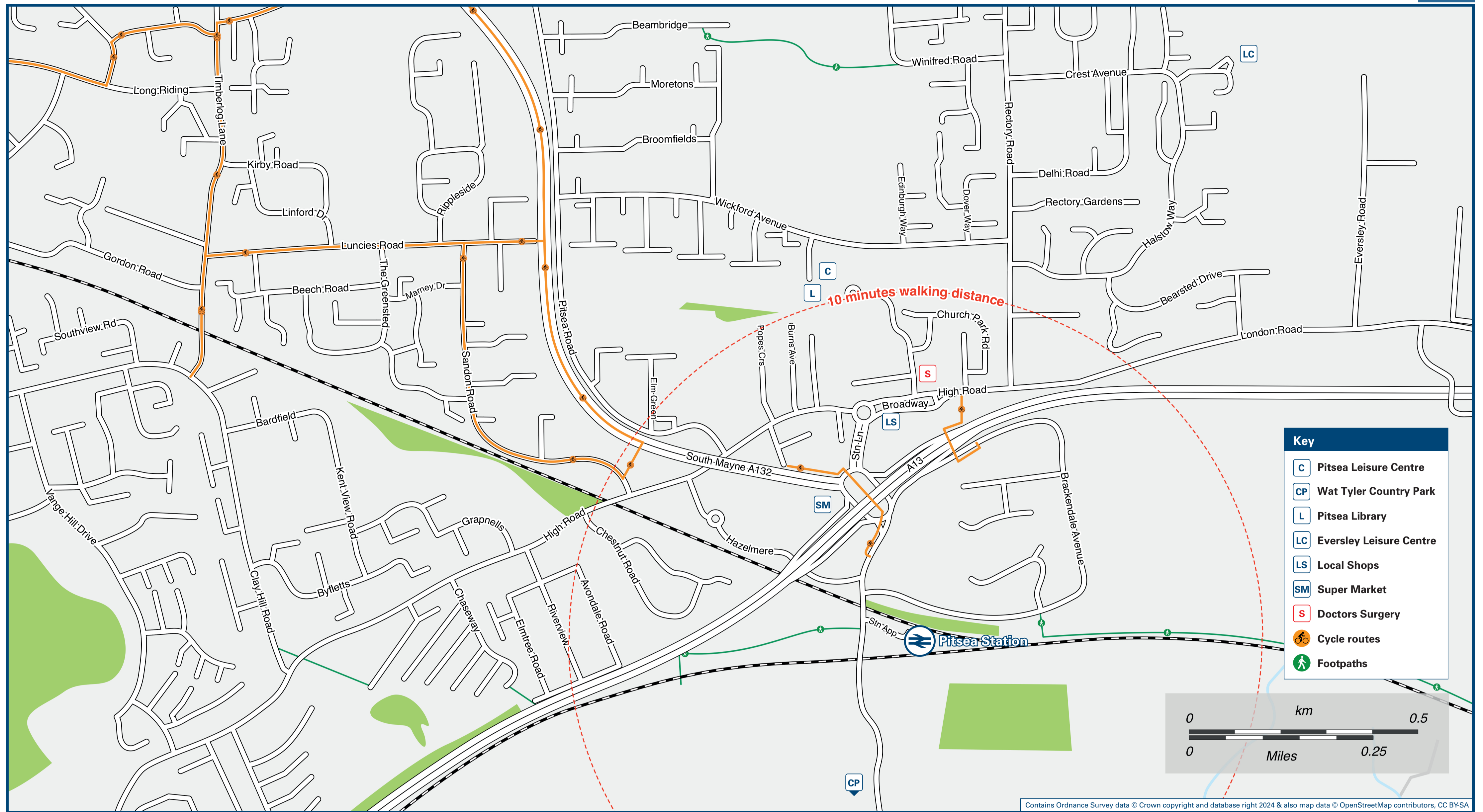




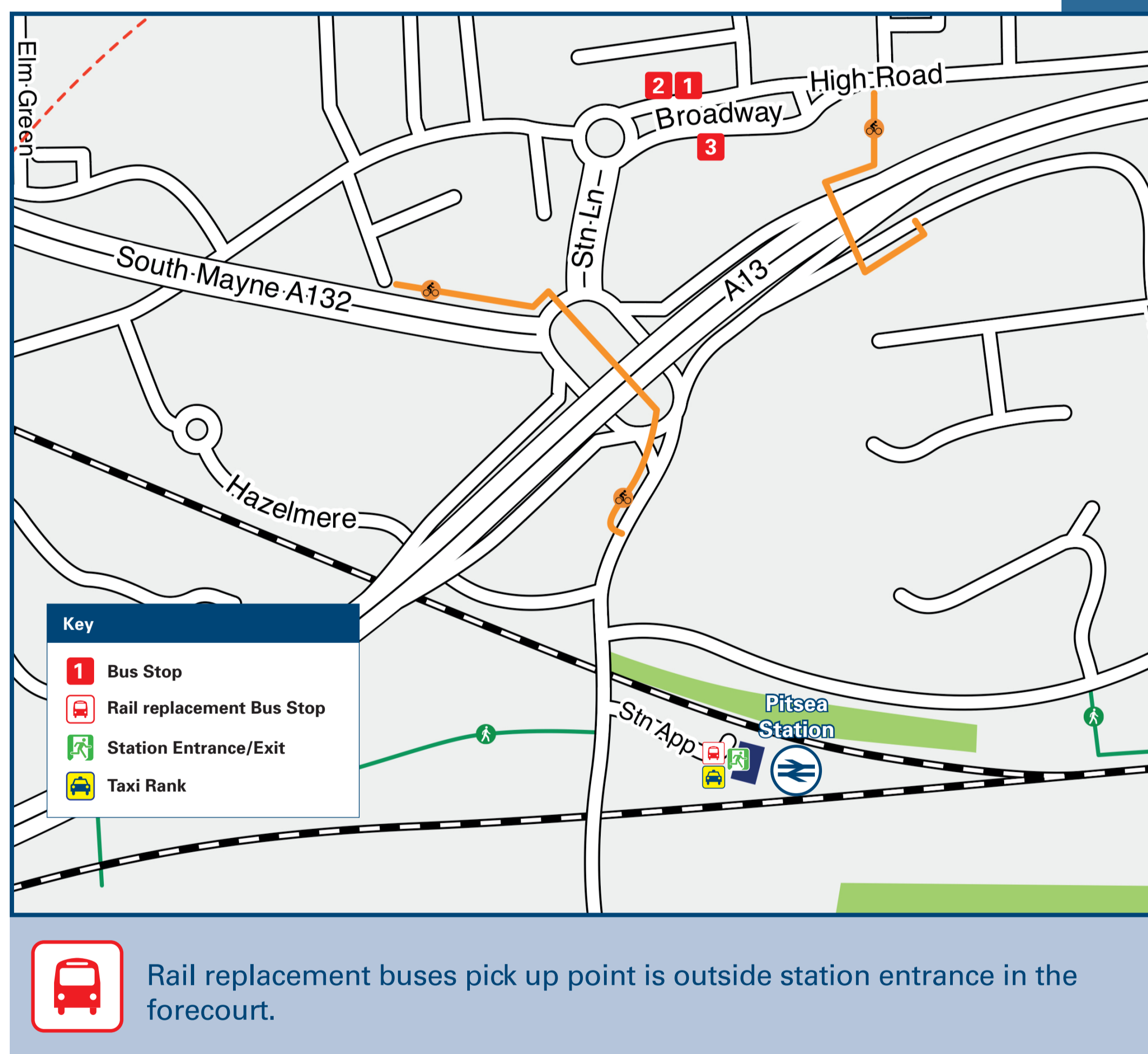
# Pitsea Station

# Onward Travel Information

## Local area map



## Buses and Taxis



## Main destinations by bus

(Data correct at June 2024)

DESTINATION	BUS ROUTES	BUS STOP
Basildon	1A#	Stop 1
	B3, B4, Z4~	Stop 2
	21, 21BA*, 22, 28	Stop 3
Basildon Hospital	21, 21BA*	Stop 3
Bowers Gifford	22, 28	Stop 1
	21, 21BA*	Stop 2
Canvey	22	Stop 1
Chalkwell	28	Stop 1
Felmoses	B3	Stop 2
Hadleigh	28	Stop 1
Leigh-on-Sea	28	Stop 1
North Benfleet	21, 21BA*	Stop 2
South Benfleet	22, 28	Stop 1
Southend-on-Sea (Town Centre)	28	Stop 1
Stanford le Hope	Z4~	Stop 2
Tilbury (Amazon)	Z4~	Stop 2
Vange	21, 21BA*, 22, 28	Stop 3
Westcliff-on-Sea	28	Stop 1

### Notes

- Bus route 21 runs a daytime Mondays to Saturdays service, only. No Evenings, or Sunday service.
- Bus routes 22, 28, B3 and B4 run daily services, Mondays to Sundays.
- \* Bus route 21BA runs a daytime Mondays to Fridays service, only. No Evenings, Saturdays or Sundays service.
- # Bus route 1A operates a limited Saturday service, only.
- ~ Bus route Z4 operates a limited daily service (2 morning buses, 2 early evening buses, only)
- Direct trains operate to this destination from this station.

## Taxis

Pitsea Station is served by a taxi rank or a cab office. Check availability before travelling, and pre-book if necessary. Please consider using the following local operators: (Inclusion of this number doesn't represent any endorsement of the taxi firm)

**A & B Taxi**  
01268 555 555

**Value Cars**  
01268 525 252

**Taxis Plus**  
01268 457 126

## Further information about all onward travel

<b>Local Cycle Info</b> <a href="http://basildon.gov.uk">basildon.gov.uk</a> <small>For more information about cycle routes.</small>	<b>National Cycle Info</b> <a href="http://sustrans.org.uk">sustrans.org.uk</a> <small>Sustrans is the UK's leading sustainable transport charity.</small>	<b>Bus Times</b> <small>See timetable displays at bus stops.</small> <a href="http://www.traveline.info">www.traveline.info</a> <b>0871 200 22 33</b> <small>call cost 13p per minute plus your phone company's access charge</small>	<b>NextBuses</b>  <b>Find the bus times for your stop.</b> <small>Search for a bus stop by entering a postcode, street &amp; town or a stop name &amp; town.</small>	<b>PlusBus</b> <b>plusbus.info</b> <small>A discount price 'bus pass' that you buy with your train ticket. It gives you unlimited bus travel around your chosen town, on participating buses.</small>
--	--	---	---	---

## National Rail Enquiries

<b>Online</b> <a href="http://nationalrail.co.uk">nationalrail.co.uk</a>	<b>NRE App</b> <b>Free National Rail Enquiries app for iOS and Android</b>	<b>Social Media</b> <a href="https://facebook.com/nationalrailenq">facebook.com/nationalrailenq</a> @nationalrailenq	<b>Alert Me</b> <small>You can sign up to Alert Me messages on the National Rail Enquiries website where you can receive train and platform notifications directly to your smart phone.</small> <a href="http://nationalrail.co.uk/alertme">nationalrail.co.uk/alertme</a>	<b>Contact Centre</b> <b>03457 48 49 50</b> <small>Calls cost no more than calls to geographic numbers (01 or 02) and may be recorded.</small>	<b>PlusBike</b> <a href="http://nationalrail.co.uk/plusbike">nationalrail.co.uk/plusbike</a> <small>For more information.</small>
---	---	--	--	--	---



**National Rail**  
Britain's train companies working together

