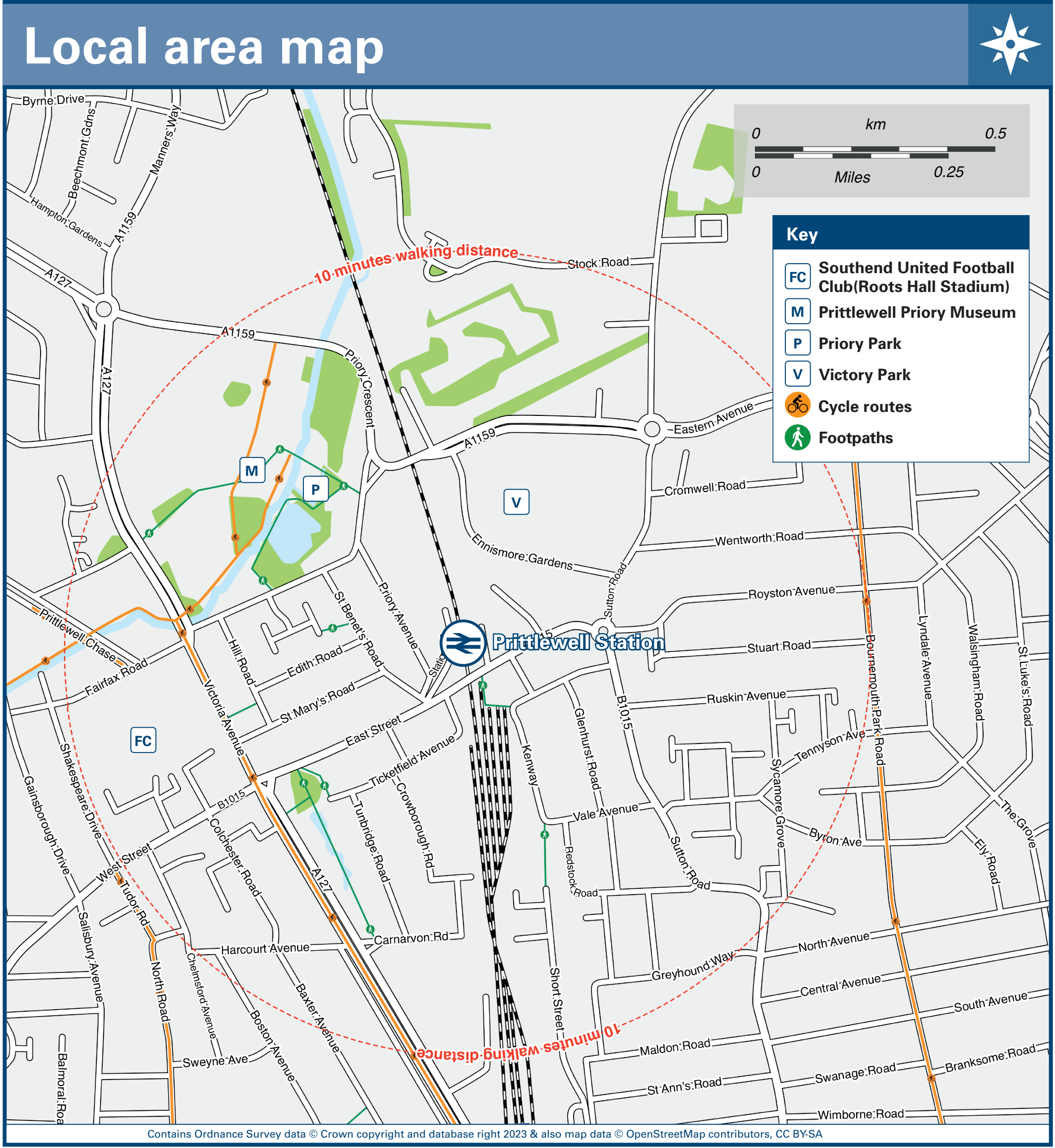
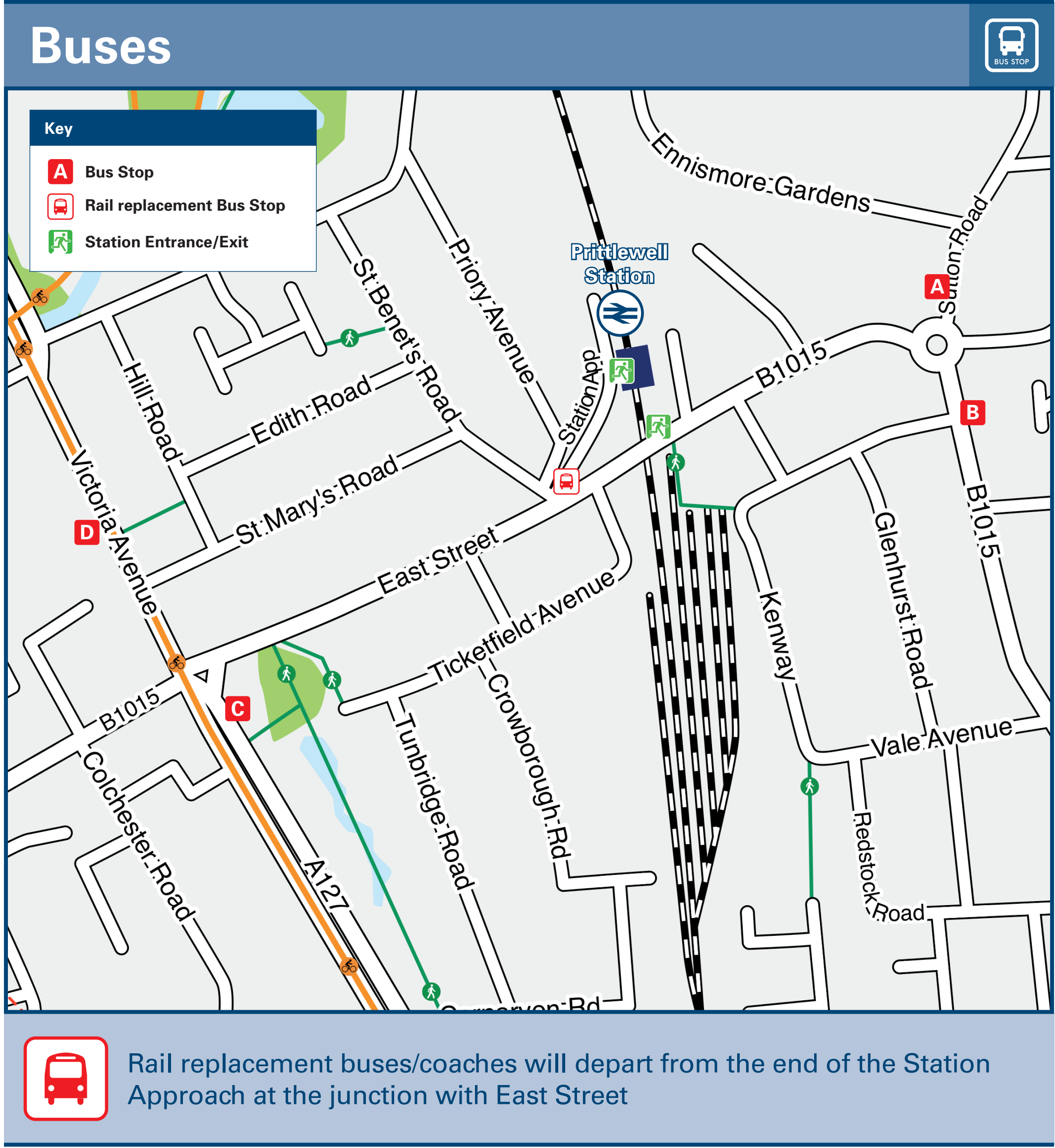




Prittlewell Station

Onward Travel Information



Main destinations by bus					
DESTINATION	BUS ROUTES	BUS STOP	DESTINATION	BUS ROUTES	BUS STOP
Ashingdon	7	D	Leigh-on-Sea	3#, 21	D
Ballards Gore	60#	A	North Leigh	29	D
Belfairs	29	D	Rawreth	3#, 25	D
Canewdon	60#, 60A#	A	Rayleigh	3#, 7, 8, 9, 20, 25	D
Canvey	21	D		7, 8	D
Chelmsford	3#	D	Rochford	60#, 60A#	A
Eastwood	9, 20, 25	D	Shoeburyness	7, 8, 9	C
Great Stambridge	60#, 60A#	A	Shotgate	25	D
Hadleigh	3#, 21	D	South Benfleet	21	D
Hawkwell	8	D	Southend Airport	7, 8, 9	D
Hockley	7, 8	D	Southend Hospital	3#, 7, 8, 20, 21, 25, 29*	D
Hullbridge	20	D			

Notes

Bus routes 6, 7, 9, 20, 21, 25 and 29 operate daily.
Bus route 8 runs on Mondays to Saturdays, only. No Sunday service.
For bus times and other bus service enquiries, please contact Traveline on 0871 200 22 33 or contact the bus operator (see below):
Arriva Buses (for bus routes 6, 7, 8, 9 & 29) call 0344 800 44 11; First Essex Buses (for bus routes 20, 21, 21 & 25) call 0345 646 0707 or Stephenson's of Essex (for bus routes 7 (Eve's only), 60 & 60A) call 01376 503 050.
* Bus route 29 does not stop directly outside the hospital, please alight Fairfax Drive (Southend Hospital Footpath), then it's a short walk or use the other services.
Bus routes 3, 60 and 60A operate limited journeys Mondays to Saturdays only.
Direct trains operate to this destination from this station.
Change here for connecting National Rail services.

Taxis	Prittlewell has no taxi rank or cab office. Advance booking is essential, please consider using the following local operators: (Inclusion of this number doesn't represent any endorsement of the taxi firm)	Radio Cabs 01702 345 678	MyCabSouthend 07490 196 219	Stevens Radio Cars 01702 559 519
--------------	--	------------------------------------	---------------------------------------	--

Further information about all onward travel					
Local Cycle Info southend.gov.uk For more information about cycle routes.	National Cycle Info sustrans.org.uk Sustrans is the UK's leading sustainable transport charity.	Bus Times See timetable displays at bus stops. www.traveline.info 0871 200 22 33 calls cost 15p per minute plus your phone company's access charge	NextBuses Find the bus times for your stop. Search for a bus stop by entering a postcode, street & town or a stop name & town.	PlusBus plusbus.info A discount price 'bus pass' that you buy with your train ticket. It gives you unlimited bus travel around your chosen town, on participating buses.	
National Rail Enquiries					
Online nationalrail.co.uk	NRE App Free National Rail Enquiries app for iOS and Android	Social Media facebook.com/nationalrailenq @nationalrailenq	Alert Me You can sign up to Alert Me messages on the National Rail Enquiries website where you can receive train and platform notifications directly to your smart phone. nationalrail.co.uk/alertme	Contact Centre 03457 48 49 50 Calls cost no more than calls to geographic numbers (01 or 02) and may be recorded.	PlusBike nationalrail.co.uk/plusbike For more information.



National Rail
Britain's train companies working together

