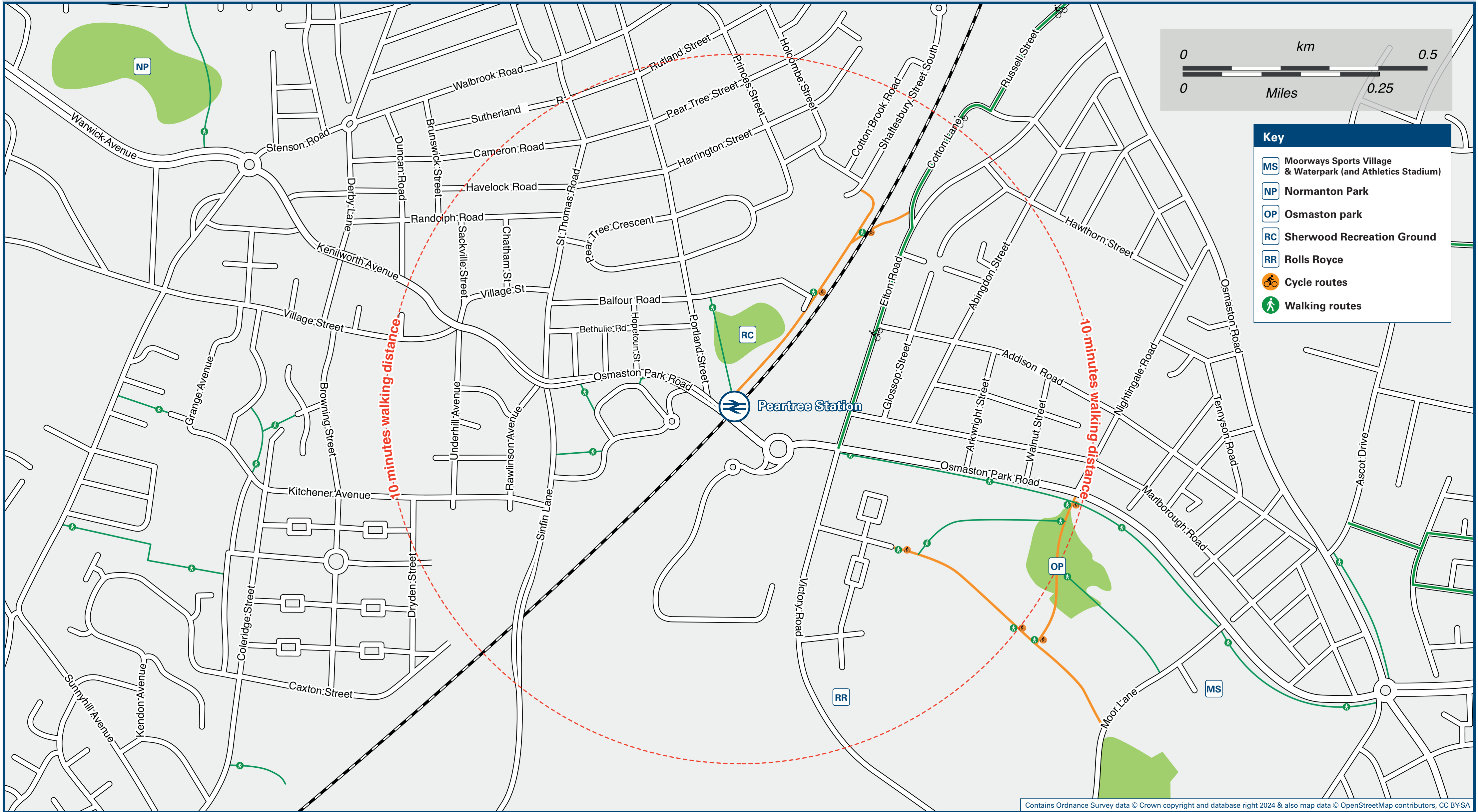




Peartree Station

Onward Travel Information

Local area map



Buses



Rail replacement buses and coaches depart from outside the station stop **A** towards Derby, or by the Showcase Cinema bus stop **B** towards Stoke.

Main destinations by bus

(Data correct at May 2025)

DESTINATION	BUS ROUTES	BUS STOP
Allenton	4	A
Alvaston	4	A
Derby (City Centre)	4	B
Normanton	4	B
Osmaston	4	A
Rose Hill	4	B
Sinfin	38	C +
Stenson Fields	38	C +

Notes

Bus routes 4 and 38 operate daily services.
For bus times, please see bus stop timetables or contact Traveline on 0871 200 22 33 or contact the bus operator (see below);
For Arriva Buses call 0344 800 44 11 or www.arrivabus.co.uk
+ Bus stop **B** is located on Sinfin Lane, which is a short walk away, please see Buses map for directions.

Taxis

Peartree station has no taxi rank or cab office. Advance booking is essential, please consider using the following local operators: (Inclusion of this number doesn't represent any endorsement of the taxi firm)

Albatross Cars
01332 345 345

Western Cars
01332 331 331

Chads Cars Ltd
01332 666 222

Further information about all onward travel

Local Cycle Info

derby.gov.uk

For more information about cycle routes.

National Cycle Info

sustrans.org.uk

Sustrans is the UK's leading sustainable transport charity.

Bus Times

See timetable displays at bus stops.

www.traveline.info
0871 200 22 33
calls cost 15p per minute
plus your phone company's access charge

NextBuses

Find the bus times for your stop.
Search for a bus stop by entering a postcode, street & town or a stop name & town.

PlusBus

plusbus.info

A discount price 'bus pass' that you buy with your train ticket. It gives you unlimited bus travel around your chosen town, on participating buses.

National Rail Enquiries

Online

nationalrail.co.uk

NRE App

Free National Rail Enquiries app for iOS and Android

Social Media

facebook.com/nationalrailenq
 @nationalrailenq

Alert Me

You can sign up to Alert Me messages on the National Rail Enquiries website where you can receive train and platform notifications directly to your smart phone.
nationalrail.co.uk/alertme

Contact Centre

03457 48 49 50
Calls cost no more than calls to geographic numbers (01 or 02) and may be recorded.

PlusBike

nationalrail.co.uk/plusbike
For more information.

E M R



National Rail
Britain's train companies working together

