



# Oxford Parkway Station

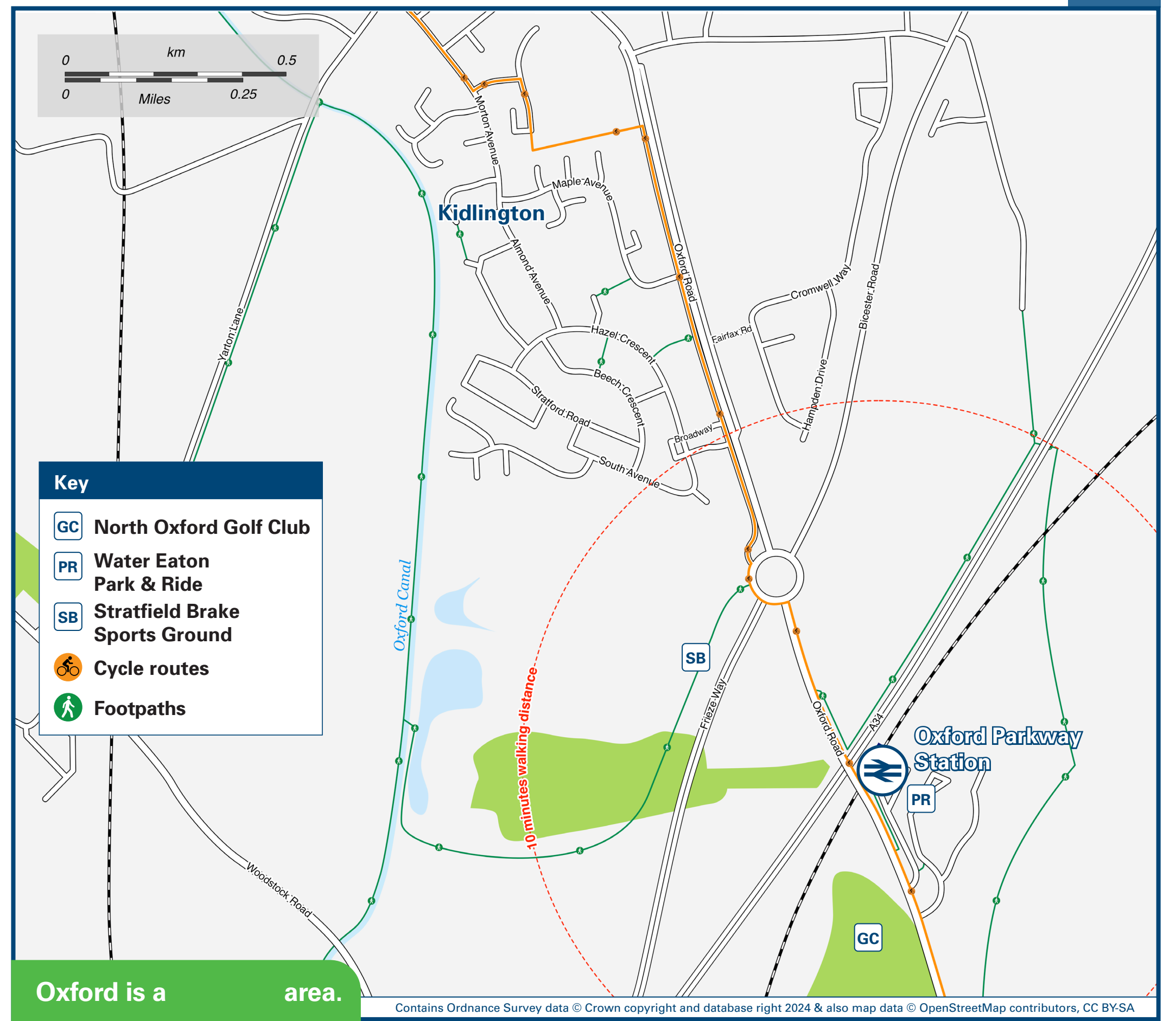
# Onward Travel Information

## Buses



Rail replacement bus services depart from the front of the station or from the Park & Ride bus stop.

## Local area map



Oxford is a area.



PlusBus is a discount price 'bus pass' that you buy with your train ticket. It gives you unlimited bus travel around your chosen town, on participating buses. Visit [www.plusbus.info](http://www.plusbus.info)

## Main destinations by bus

(Data correct at May 2024)



DESTINATION	BUS ROUTES	BUS STOP
Banbury	S4	E
Bicester Town Centre	24, S5	E
Blenheim Palace	S7	E
Bletchington	24	E
Churchill Hospital	700	B
	2, 2A	A
Cutteslowe	700	B
	2, 2A, 24, S4, S5, S7	D
Deddington	S4	E
Glory Farm	S5	E
Gosford	24, S5	E
Hampton Poyle	24	E
John Radcliffe Hospital	700	B

DESTINATION	BUS ROUTES	BUS STOP
Kidlington	2, 2A, S4, S7	E
	700	C
Kirtlington	24	E
Langford Lane (For Oxford Airport)	S7	E
Oxford Brookes University (Headington Campus)	700	B
	2, 2A	A
Oxford City Centre	2, 2A, 24, 500, S4, S5, S7	D
Shipton-on-Cherwell	S4	E
Steeple Aston	S4	E
	2, 2A	A
Summertown	700	B
	2, 2A, 24, S4, S5, S7	D

DESTINATION	BUS ROUTES	BUS STOP
Tackley	S4	E
West Adderbury	S4	E
Witney (Market Square)	S7	E
Woodstock	S7	E

### Notes

- PLUSBUS** destination, please see below for details. Bus routes 2, 2A, 700, S4, S5 and S7 run daily, Mondays to Sundays. Bus route 24 runs a limited Mondays to Saturdays service until early evening. No Sunday service.
- Direct trains operate to this destination from this station.
- \* Limited late night rail connection to this destination, only.

## Taxis

Oxford Parkway Station has no taxi rank or cab office. Advance booking is essential, please consider using the following local operators: (Inclusion of this number doesn't represent any endorsement of the taxi firm)

**Kidlington Cars**  
07766 207 260

**001 Cars**  
01865 240 000

**Ride Cabs**  
07435 789 133

## Further information about all onward travel

<b>Local Cycle Info</b> <a href="http://oxfordshire.gov.uk">oxfordshire.gov.uk</a> For more information about cycle routes.	<b>National Cycle Info</b> <a href="http://sustrans.org.uk">sustrans.org.uk</a> Sustrans is the UK's leading sustainable transport charity.	<b>Bus Times</b> See timetable displays at bus stops.  <a href="http://www.traveline.info">www.traveline.info</a> 0871 200 22 33 calls cost 12p per minute plus your phone company's access charge	<b>NextBuses .mobi</b>  Download on the App Store <b>Find the bus times for your stop.</b> Search for a bus stop by entering a postcode, street & town or a stop name & town.	<b>PlusBus</b>  <a href="http://plusbus.info">plusbus.info</a> A discount price 'bus pass' that you buy with your train ticket. It gives you unlimited bus travel around your chosen town, on participating buses.
---	---	---	---	---

## National Rail Enquiries

<b>Online</b> <a href="http://nationalrail.co.uk">nationalrail.co.uk</a>	<b>NRE App</b> Free National Rail Enquiries app for iOS and Android	<b>Social Media</b> facebook.com/nationalrailenq @nationalrailenq	<b>Alert Me</b> You can sign up to Alert Me messages on the National Rail Enquiries website where you can receive train and platform notifications directly to your smart phone. <a href="http://nationalrail.co.uk/alertme">nationalrail.co.uk/alertme</a>	<b>Contact Centre</b> 03457 48 49 50 Calls cost no more than calls to geographic numbers (01 or 02) and may be recorded.	<b>PlusBike</b>  <a href="http://nationalrail.co.uk/plusbike">nationalrail.co.uk/plusbike</a> For more information.
---	--	---	---	--	--



**National Rail**  
Britain's train companies working together



This poster shows details of popular destinations and main, frequent bus routes. Additional services may run, so please check with Traveline or see posters at local bus stops. Whilst considerable care has been taken to ensure the information contained on this poster is correct and accurate, National Rail cannot accept responsibility for any loss or inconvenience caused by any errors or omissions, or for loss, damage, injury or inconvenience relating to the cancellation, alteration, delay or diversion of a service. For any feedback, please e-mail [comments@onwardtravelposters.com](mailto:comments@onwardtravelposters.com)

Scan this code with your mobile for full station information.