



Onward Travel Information

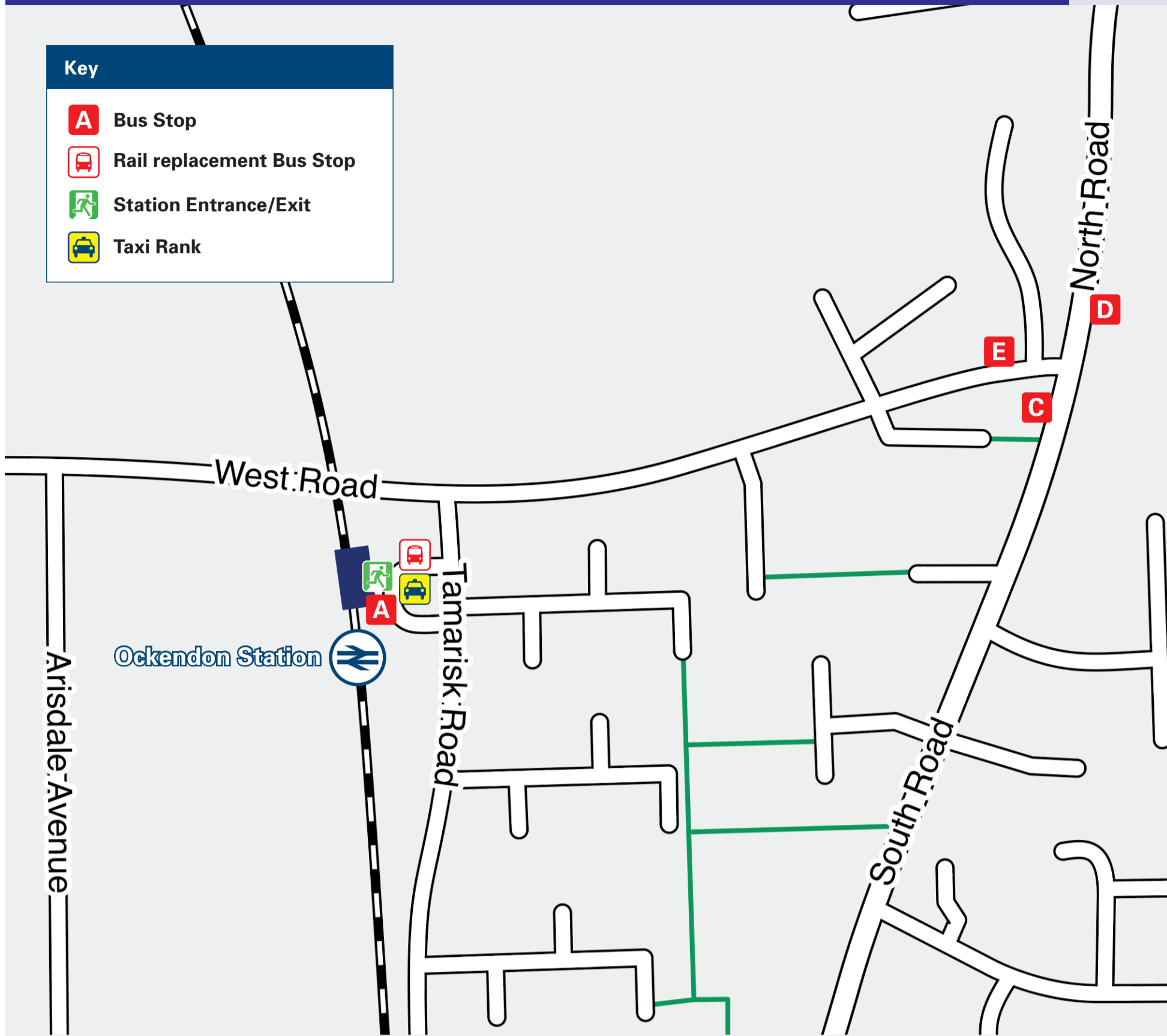
Ockendon Station

Buses and Taxis



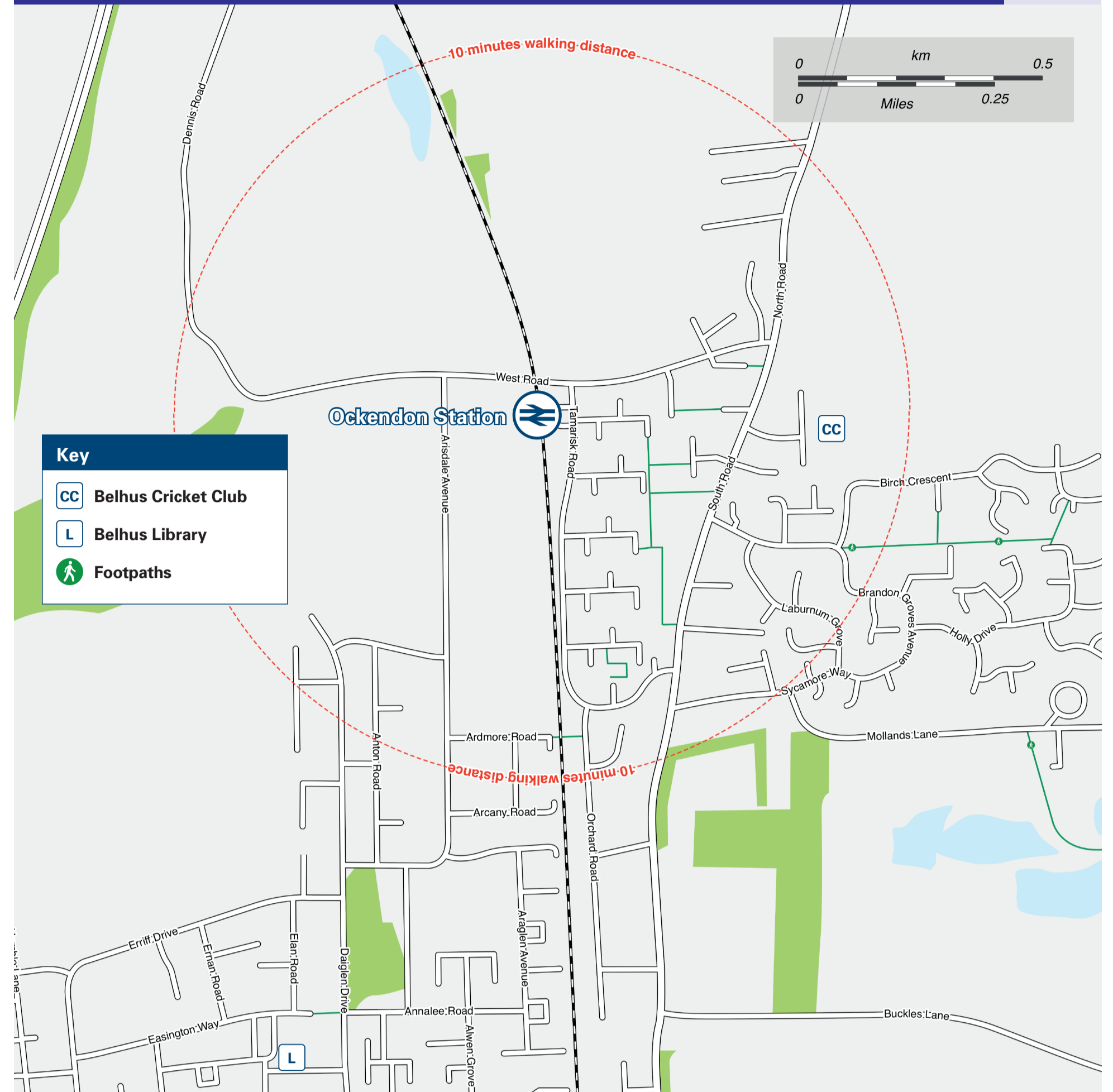
Key

- A** Bus Stop
- R** Rail replacement Bus Stop
- E** Station Entrance/Exit
- T** Taxi Rank



c2c Rail Replacement outside the Station Entrance. During disruption, ticket acceptance may be arranged on the TfL 370 Bus to Lakeside (for Chafford Hundred) and Romford via Upminster. These buses operate from bus stops on South Road, near the Royal Oak Public House.

Local area map



Main destinations by bus

(Data correct at March 2026)



DESTINATION	BUS ROUTES	BUS STOP	DESTINATION	BUS ROUTES	BUS STOP	DESTINATION	BUS ROUTES	BUS STOP
Brentwood (Town & Station) ⇄	269	A, E	North Ockendon	269	A, E	Thurrock Community Hospital	269	A, D
Corbets Tey	370	C	North Stifford	370	C	Upminster ⇄ ⇄	370	C
Grays ⇄	269	A, D	Romford ⇄ ⇄ ⇄	370	C	Warley	269	A, E
Great Warley	269	A, E	Stifford Clays	269	A, D			
Homchurch (Town Centre)	370	C						
intu Lakeside (Bus Station) ⇄	370	D						

NOTES

Bus routes 269 operates a limited daytime service on Mondays to Saturdays, only. No evenings or Sundays service.
 Bus route 370 operates a daily service.
 For bus times and days of operation please contact TraveLine on www.traveline.info or call: 0871 200 22 33

- Direct trains operate to this destination from this station.
- Change here for National Rail train services.
- Change here for the Elizabeth Line train services.
- Change here for London Underground train services.
- Change here for London Overground train services.

Taxis

Ockendon Station is served by a taxi rank or a cab office. Check availability before travelling, and pre-book if necessary. Please consider using the following local operators: (Inclusion of this number doesn't represent any endorsement of the taxi firm)

AA New Station Cars
01708 858 000

AFR Cars
01708 540 057

Ockendon Station Taxi
01708 540 203

Further information about all onward travel

Local Cycle Info

thurrock.gov.uk
For more information about cycle routes.

National Cycle Info

walkwheelcycletrust.org.uk

Bus Times

See timetable displays at bus stops.
www.traveline.info
 0871 200 22 33
 public transport info
calls cost 10p per minute plus your phone company's access charge



PlusBus

plusbus.info

PlusBus is a discount price 'bus pass' that you buy with your train ticket. It gives you unlimited bus travel around your chosen town, on participating buses. Visit plusbus.info



National Rail Enquiries

Online	NRE App	Social Media	Alert Me	Contact Centre	PlusBike
nationalrail.co.uk	Free National Rail Enquiries app for iOS and Android	facebook.com/nationalrailenq @nationalrailenq	nationalrail.co.uk/alertme You can sign up to Alert Me messages on the National Rail Enquiries website where you can receive train and platform notifications directly to your smart phone.	03457 48 49 50 Calls cost no more than calls to geographic numbers (01 or 02) and may be recorded.	nationalrail.co.uk/plusbike For more information.

