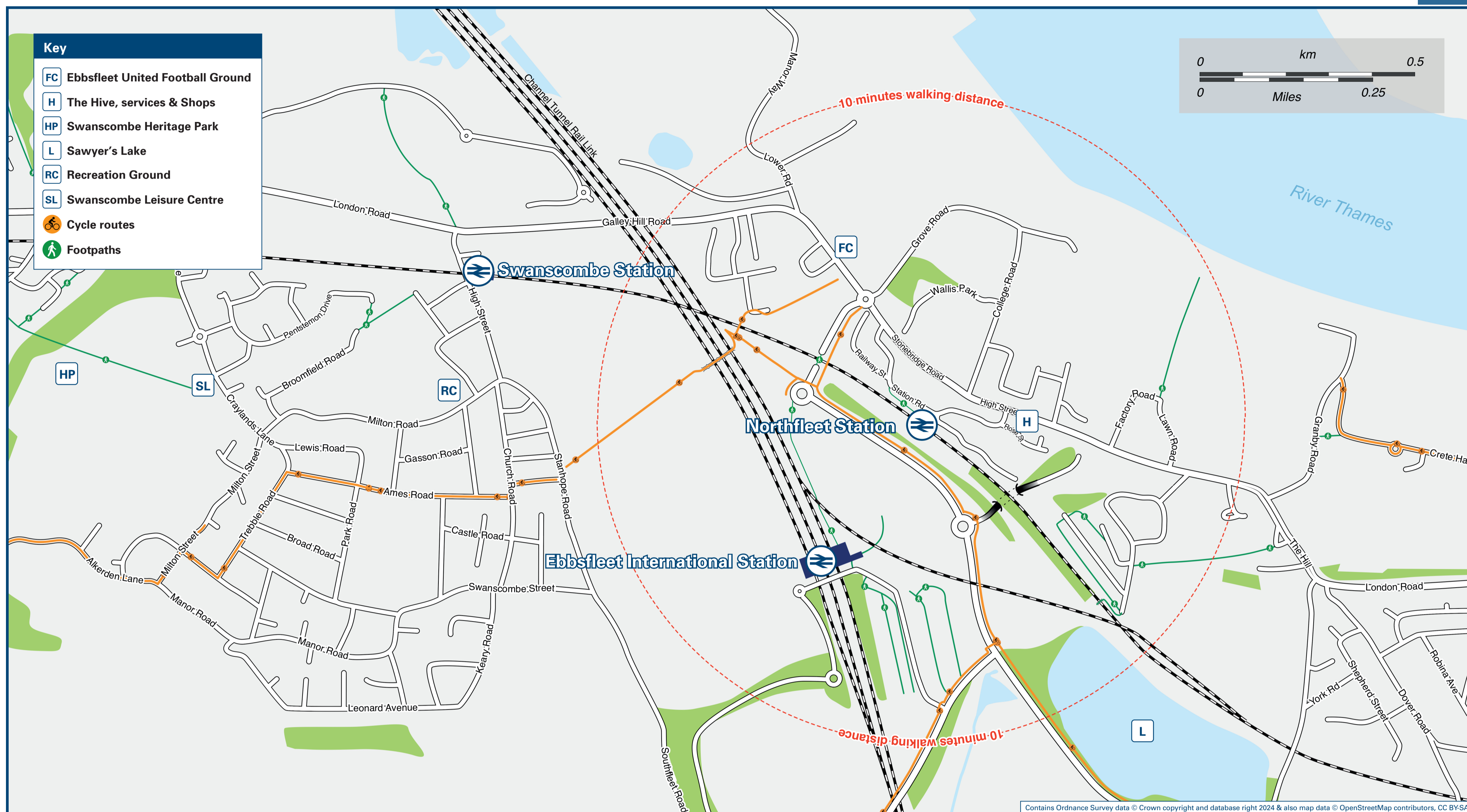




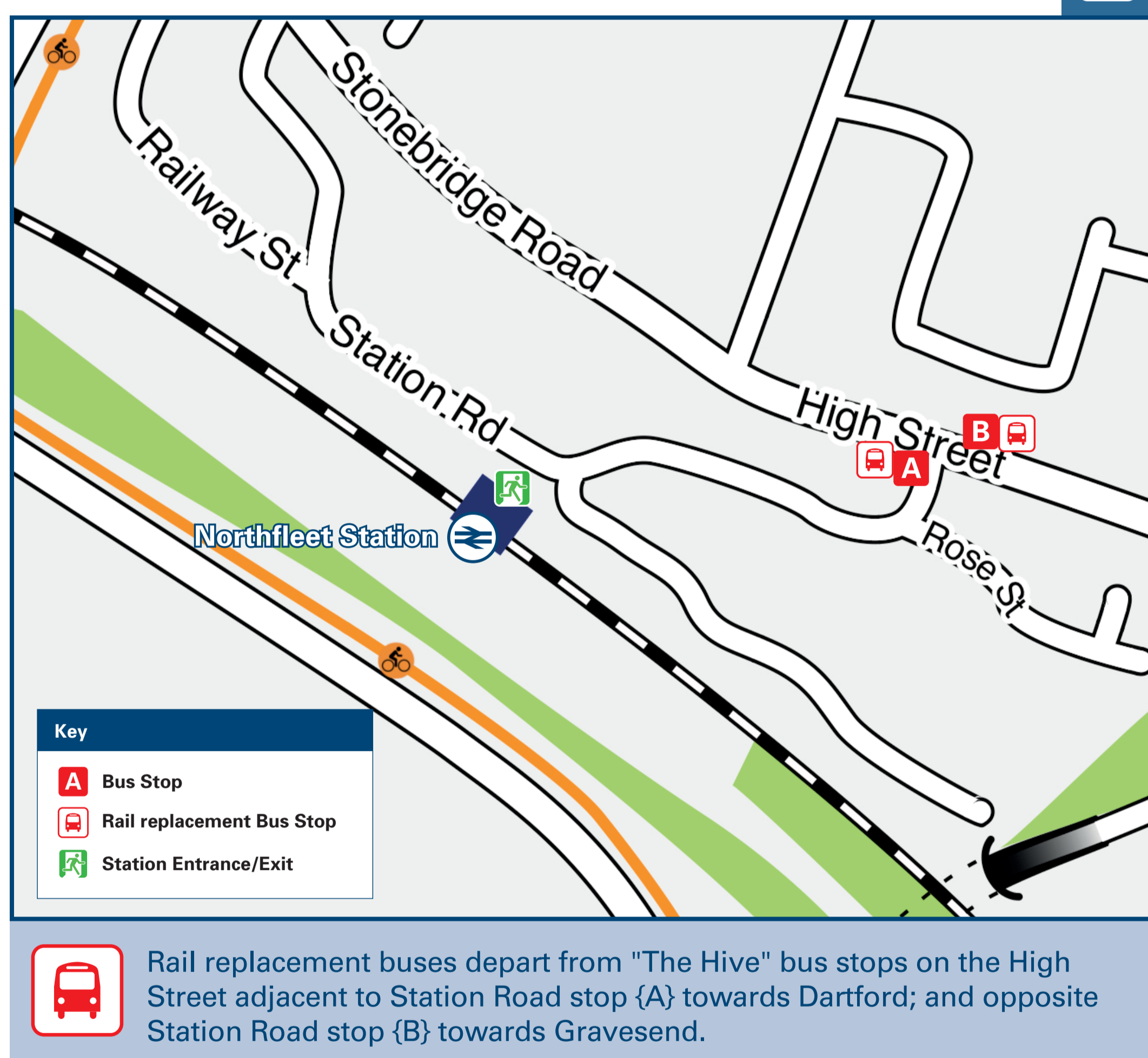
Northfleet Station

Onward Travel Information

Local area map



Buses



Main destinations by bus

(Data correct at July 2024)

DESTINATION	BUS ROUTES	BUS STOP
Bluewater	470*, 490	A
Dartford (Home Gardens, for Dartford Station) Ⓞ	470*, 480	A
Ebbsfleet Green (Ackers Drive, Southfleet Road)	470*, 480	A
Ebbsfleet International Station	490	A
Ebbsfleet International Station (Thames Way)	470*, 480, 490	A
Gravesend (Railway Station) Ⓞ	470*, 480, 490	B
Greenhithe (London Road) Ⓞ	470*, 480	A
Horns Cross/Stone (London Road)	470*, 480	A
Ingress Park (London Road)	470*, 480	A
Northfleet (London Road)	470*, 480, 490	B
Swanscombe (Railway Station) Ⓞ	470*, 480	A
Swanscombe (The George & Dragon, London Road)	470*, 480	A

Notes

Bus routes 480 and 490 operate daily services.
 For bus times and further information contact Arriva Kent Thameside (for bus routes 470, 480 & 490) www.arrivabus.co.uk/help/contact-us or call 0344 800 44 11 or contact Traveline on 0871 200 22 33.

Ⓞ Direct trains operate to this destination from this station.
 * Bus route 470 operates early mornings and evenings daily.

Taxis

Northfleet Station has no taxi rank or cab office. Advance booking is essential, please consider using the following local operators: (Inclusion of this number doesn't represent any endorsement of the taxi firm)

Astra Ebbsfleet Cars
0800 542 6757

Gravesend Taxis
07940 413 392

Phoenix Taxis
01474 333 909

Further information about all onward travel

Local Cycle Info gravesham.gov.uk For more information about cycle routes.	National Cycle Info sustrans.org.uk Sustrans is the UK's leading sustainable transport charity.	Bus Times See timetable displays at bus stops. www.traveline.info 0871 200 22 33 <small>calls cost 13p per minute plus your phone company's access charge</small>	NextBuses Find the bus times for your stop. Search for a bus stop by entering a postcode, street & town or a stop name & town.	PlusBus plusbus.info A discount price 'bus pass' that you buy with your train ticket. It gives you unlimited bus travel around your chosen town, on participating buses.
---	---	--	--	---

National Rail Enquiries

Online nationalrail.co.uk	NRE App Free National Rail Enquiries app for iOS and Android	Social Media facebook.com/nationalrailenq @nationalrailenq	Alert Me You can sign up to Alert Me messages on the National Rail Enquiries website where you can receive train and platform notifications directly to your smart phone. nationalrail.co.uk/alertme	Contact Centre 03457 48 49 50 Calls cost no more than calls to geographic numbers (01 or 02) and may be recorded.	PlusBike nationalrail.co.uk/plusbike For more information.
---	--	--	---	--	--

southeastern



National Rail

Britain's train companies working together



This poster shows details of popular destinations and main, frequent bus routes. Additional services may run, so please check with Traveline or see posters at local bus stops. Whilst considerable care has been taken to ensure the information contained on this poster is correct and accurate, National Rail cannot accept responsibility for any loss or inconvenience caused by any errors or omissions, or for loss, damage, injury or inconvenience relating to the cancellation, alteration, delay or diversion of a service. For any feedback, please e-mail comments@onwardtravelposters.com

Scan this code with your mobile for full station information.