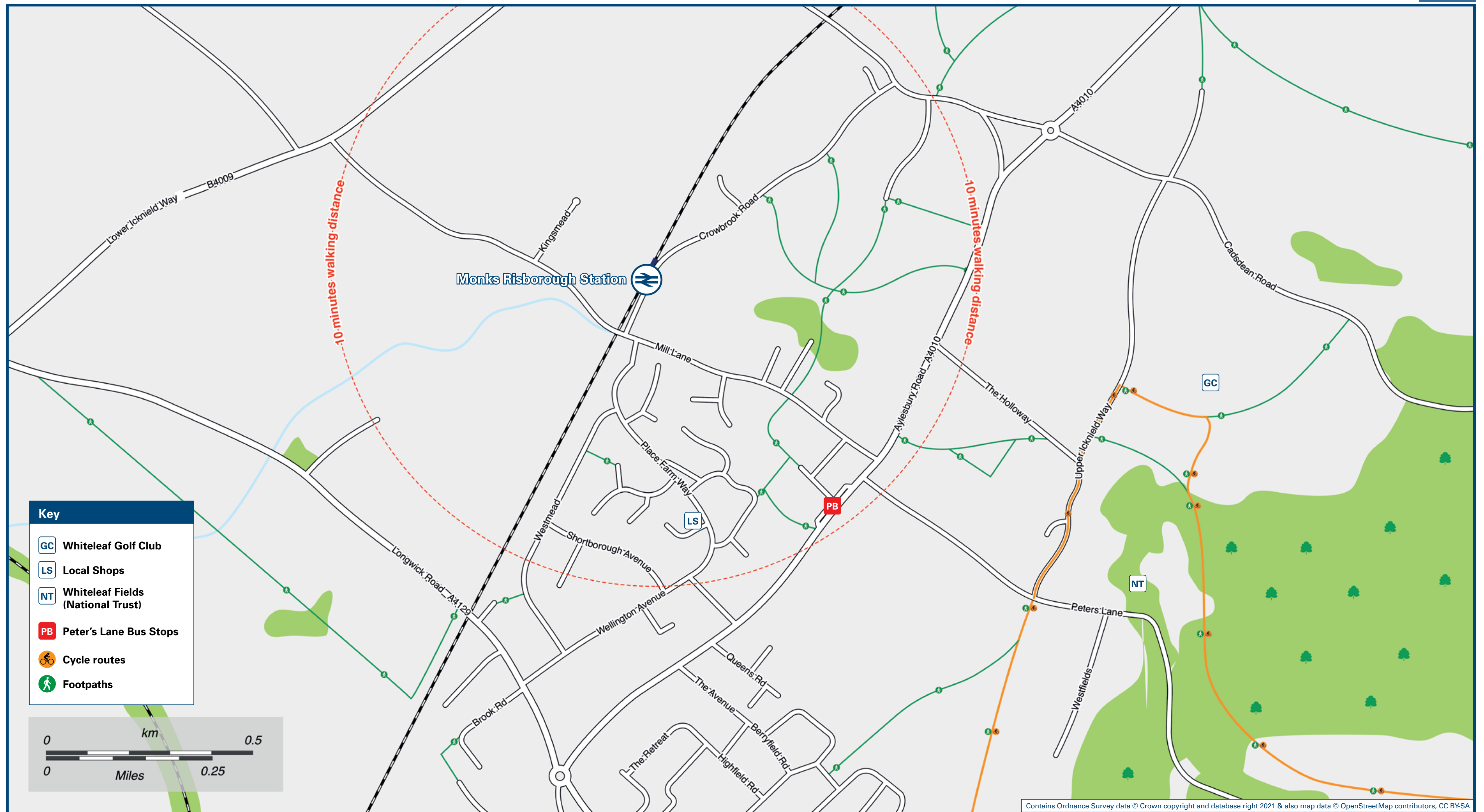




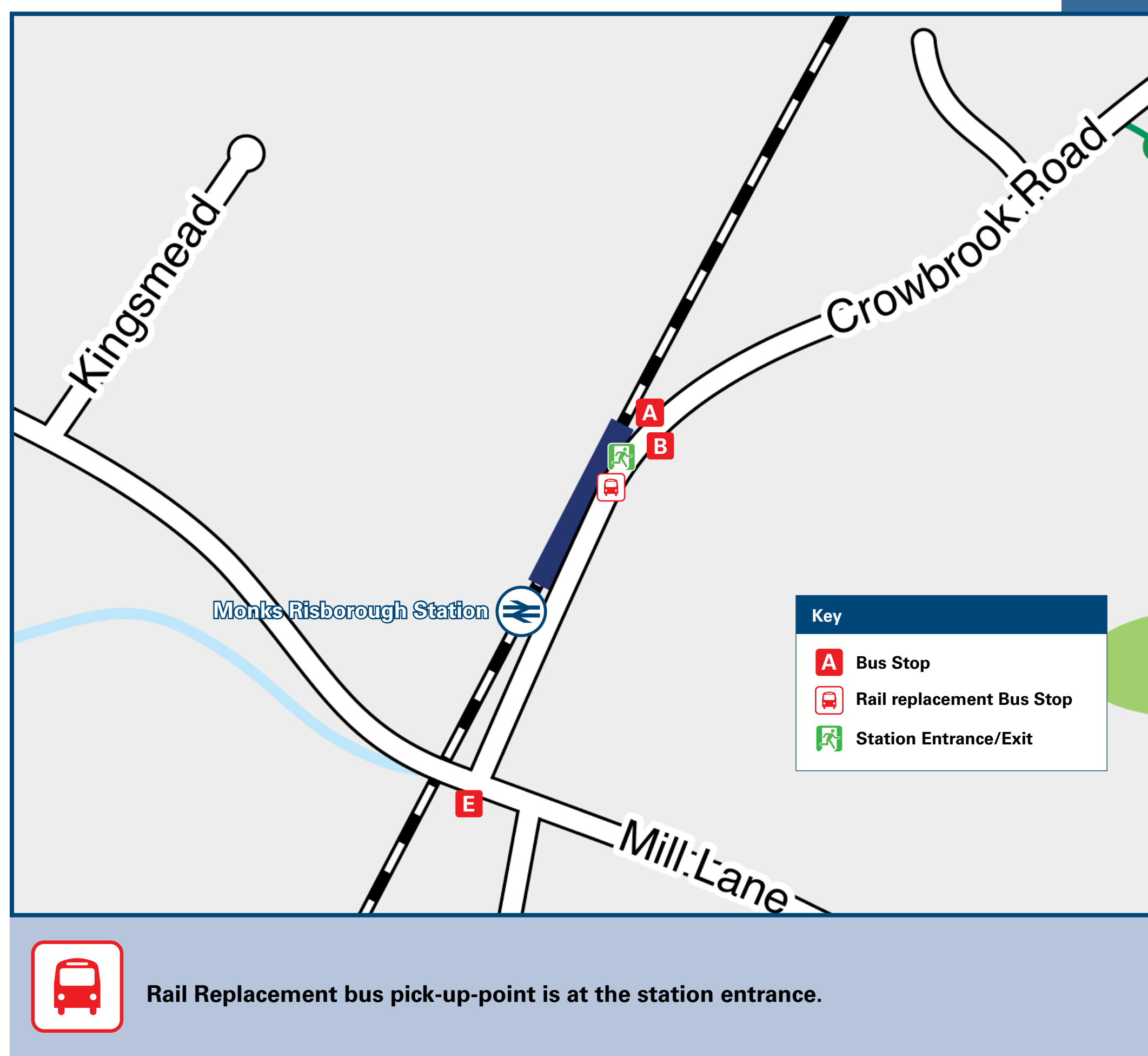
Monks Risborough Station

Onward Travel Information

Local area map



Buses and Taxis



Main destinations by bus

(Data correct at April 2024)

DESTINATION	BUS ROUTES	BUS STOP
Princes Risborough (Market Square) ^	1	E

Notes

There are no regular buses from stops **A** and **B**. They are served by the Risborough Area Community Bus services route 6 on Mondays to Saturdays. Please visit www.racb.co.uk for details, or call 079 419 630 97

Bus route 1 operates a limited Mondays to Saturdays service, only. No Sunday service.

Stops for regular buses to Aylesbury, Princes Risborough and High Wycombe can be found on the Aylesbury Road near Peters Lane, please see the local area map. These are served by a regular bus service 130 and 300. Please visit www.buckinghamshire.gov.uk/public-transport for timetables or call Traveline 0871 200 22 33 (calls cost 12p per minute plus your phone company's access charge)

Taxis

Monks Risborough Station is not served by a taxi rank or cab office. Please consider using the following local operators: (Inclusion of this number doesn't represent any endorsement of the taxi firm)

Risborough Cars
01844 274 111

Further information about all onward travel

Local Cycle Info buckinghamshire.gov.uk For more information on bus routes and cycling	National Cycle Info sustrans.org.uk Sustrans is the UK's leading sustainable transport charity.	Bus Times See timetable displays at bus stops. www.traveline.info 0871 200 22 33 <small>calls cost 12p per minute plus your phone company's access charge</small>	NextBuses Find the bus times for your stop. Search for a bus stop by entering a postcode, street & town or a stop name & town.	PlusBus plusbus.info A discount price 'bus pass' that you buy with your train ticket. It gives you unlimited bus travel around your chosen town, on participating buses.
---	---	---	--	--

National Rail Enquiries

Online nationalrail.co.uk	NRE App Free National Rail Enquiries app for iOS and Android	Social Media facebook.com/nationalrailenq @nationalrailenq	Alert Me You can sign up to Alert Me messages on the National Rail Enquiries website where you can receive train and platform notifications directly to your smart phone. nationalrail.co.uk/alertme	Contact Centre 03457 48 49 50 Calls cost no more than calls to geographic numbers (01 or 02) and may be recorded.	PlusBike nationalrail.co.uk/plusbike For more information.
---	--	--	---	---	--

Chilternrailways



National Rail

Britain's train companies working together



Whilst considerable care has been taken to ensure the information contained on this poster is correct and accurate, National Rail cannot accept responsibility for any loss or inconvenience caused by any errors or omissions, or for loss, damage, injury or inconvenience caused. For any feedback, please e-mail comments@onwardtravelposters.com

Scan this code with your mobile for full station information.