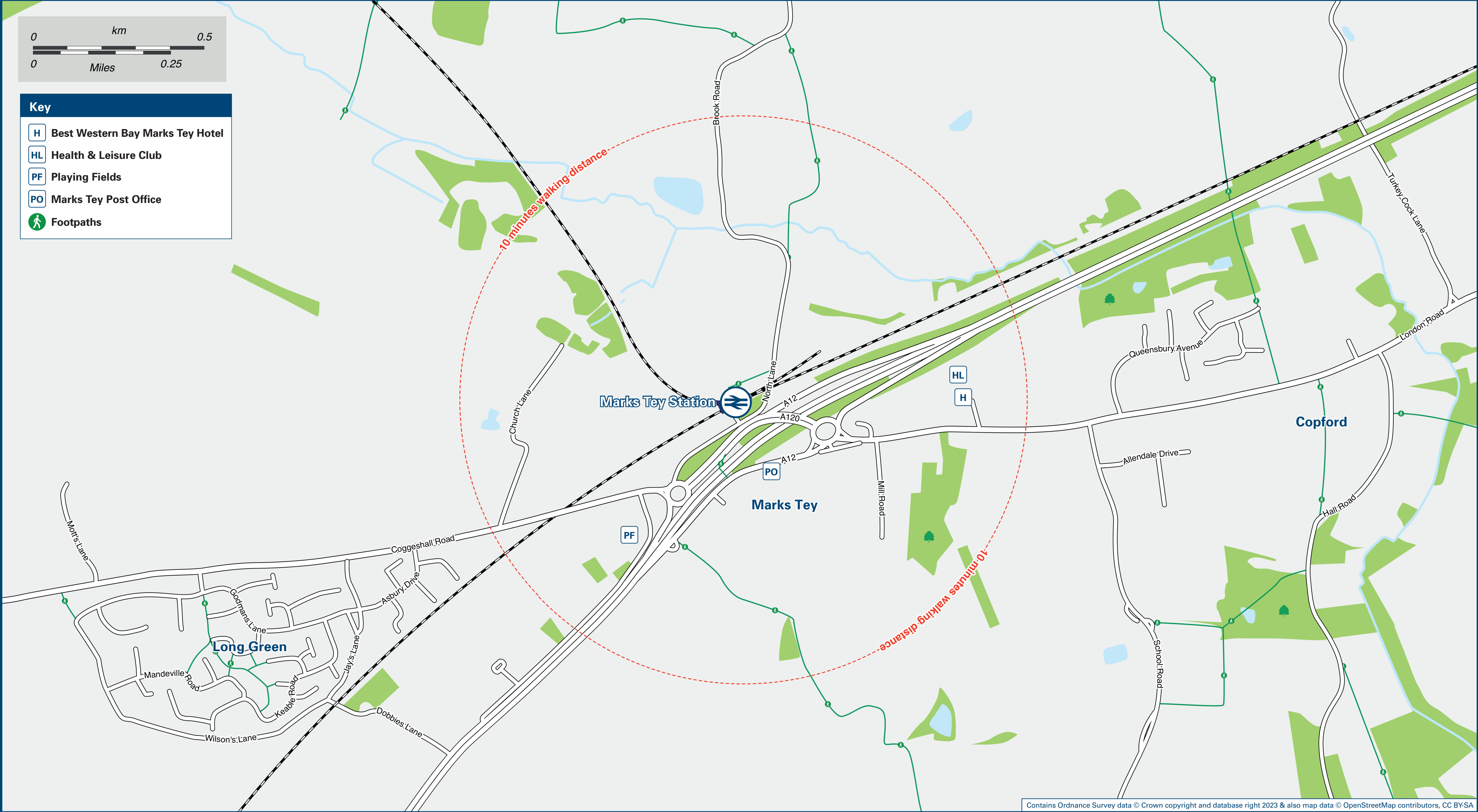




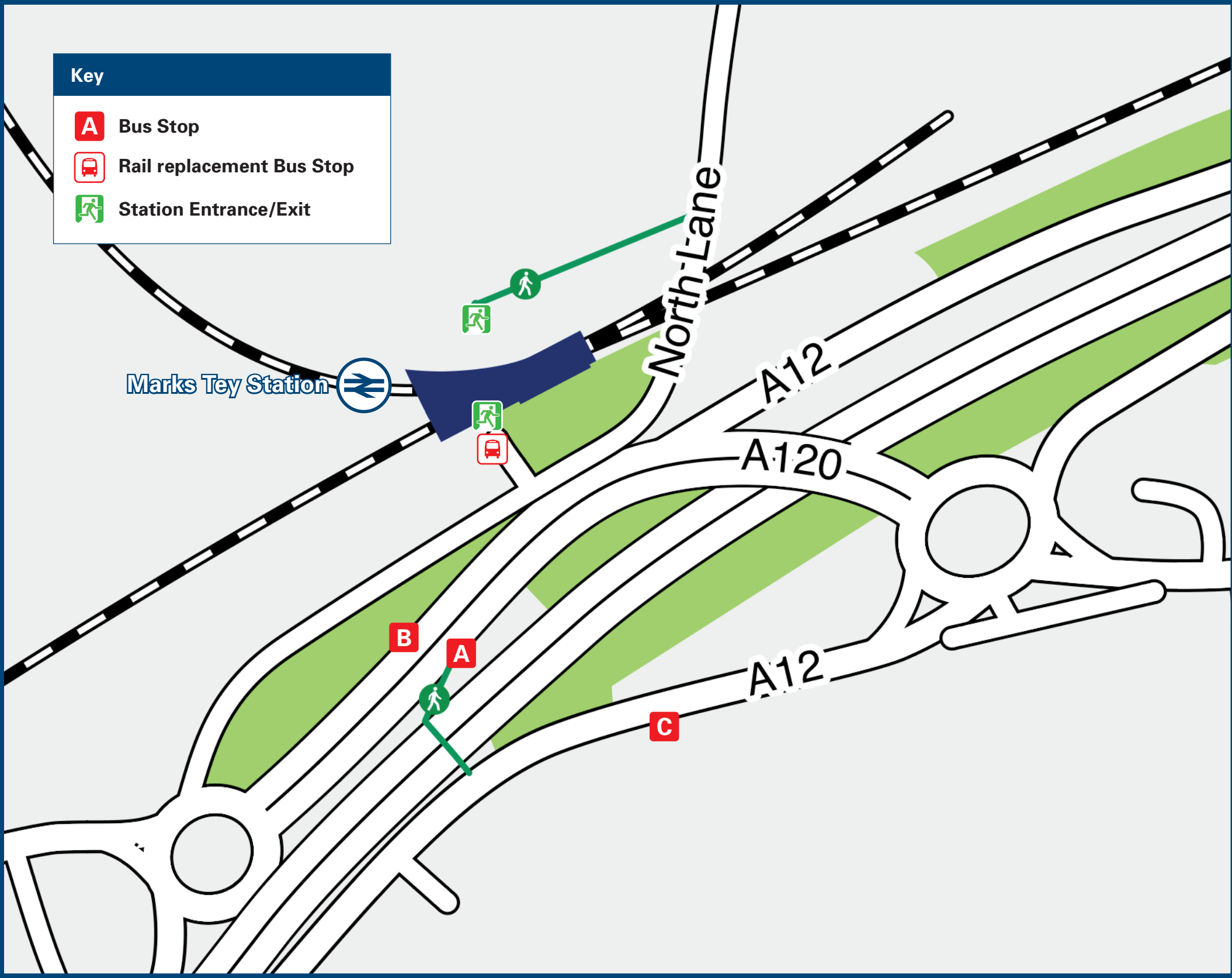
Marks Tey Station

Onward Travel Information

Local area map



Buses



Rail replacement buses/coaches will depart from outside the station entrance

Main destinations by bus

(Data correct at August 2023)

DESTINATION	BUS ROUTES	BUS STOP
Bradwell	320*, X20, X70*	A
Braintree	320*, X20, X70*	A
Coggeshall	320*, X20, X70*	A
Chelmsford	X70(via Braintree)* 371, 372*, X71*	C
Colchester (Town Centre)	82*, 320*, 371, 372*, X20, X70*, X71*	B
Copford	15, 82*, 320*, 371, 372*, X20, X70*, X71*	B
Earls Colne	82*	A
Feering (Prested Hall)	371, 372*	C
Great Notley	320*, X70*	A
Great Tey	82*	A
Hatfield Peverel	371, 372*	C
Kelvedon	371, 372*	C
Lexden	15, 82*, 320*, 371, 372*, X20, X70*, X71*	B
Little Tey	320*, X20, X70*	A
Shrub End	15	B
Stansted Airport	X20	A
Stanway (Fiveways)	15	B
Stanway (London Road)	15, 82*, 320*, 371, 372*, X20, X70*, X71*	B
Witham	371, 372*, X71*	C

Notes

Bus routes 15, 320, 372, X70 and X71 operate Mondays to Fridays only.
Bus route 82 operates Mondays to Saturdays.
Bus routes 371 and X20 operate daily.
For bus times and other bus service enquiries, please contact Traveline on 0871 200 22 33 or contact the bus operator (see below):
First Essex (for bus routes 320, 371, 372, X20, X70 and X71) call 0345 646 0707 or Hedingham (for bus routes 15, 82 & 82A) call 03301 020 801.
Direct trains operate to this destination from this station.
Alternatively change trains at Witham for this destination.
* Limited journeys only with this service, please check timetables.

Taxis

Marks Tey station has no taxi rank or cab office. Advance booking is essential, please consider using the following local operators: (Inclusion of this number doesn't represent any endorsement of the taxi firm)

Coggeshall Cars
01376 562 047

WOW cabs
01206 331 000

Further information about all onward travel

Local Cycle Info

colchester.gov.uk
For more information about cycle routes.

National Cycle Info

sustrans.org.uk
Sustrans is the UK's leading sustainable transport charity.

Bus Times

See timetable displays at bus stops.

traveline
public transport info
www.traveline.info
0871 200 22 33
calls cost 15p per minute plus your phone company's access charge

NextBuses

Find the bus times for your stop.
Search for a bus stop by entering a postcode, street & town or a stop name & town.

PlusBus

plusbus.info
A discount price 'bus pass' that you buy with your train ticket. It gives you unlimited bus travel around your chosen town, on participating buses.

National Rail Enquiries

Online

nationalrail.co.uk

NRE App

Free National Rail Enquiries app for iOS and Android

Social Media

facebook.com/nationalrailenq
@nationalrailenq

Alert Me

You can sign up to Alert Me messages on the National Rail Enquiries website where you can receive train and platform notifications directly to your smart phone.
nationalrail.co.uk/alertme

Contact Centre

03457 48 49 50
Calls cost no more than calls to geographic numbers (01 or 02) and may be recorded.

PlusBike

nationalrail.co.uk/plusbike
For more information.

greateranglia



National Rail
Britain's train companies working together



This poster shows details of popular destinations and main, frequent bus routes. Additional services may run, so please check with Traveline or see posters at local bus stops. Whilst considerable care has been taken to ensure the information contained on this poster is correct and accurate, National Rail cannot accept responsibility for any loss or inconvenience caused by any errors or omissions, or for loss, damage, injury or inconvenience relating to the cancellation, alteration, delay or diversion of a service. For any feedback, please e-mail comments@onwardtravelposters.com

Scan this code with your mobile for full station information.