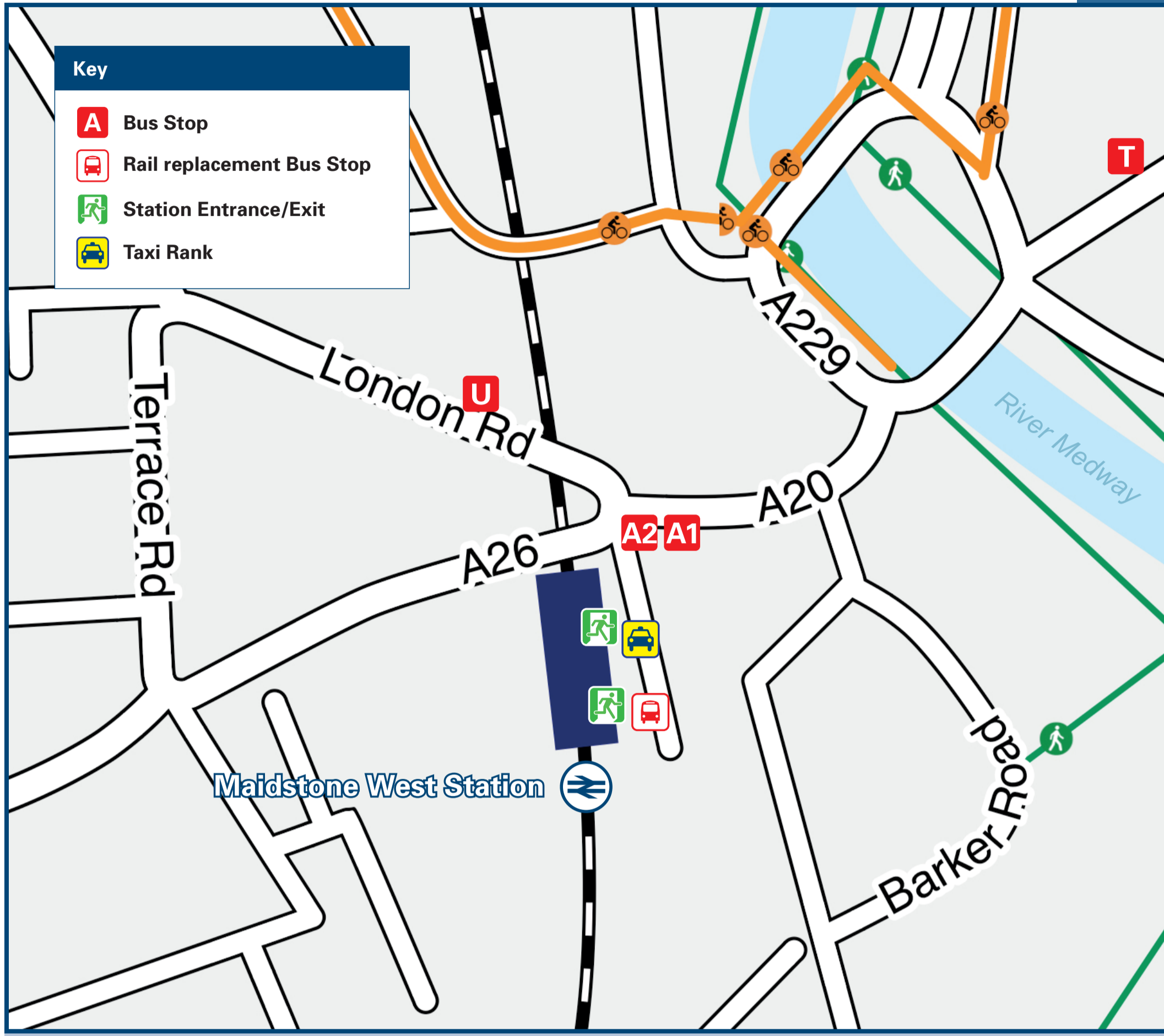




# Maidstone West Station

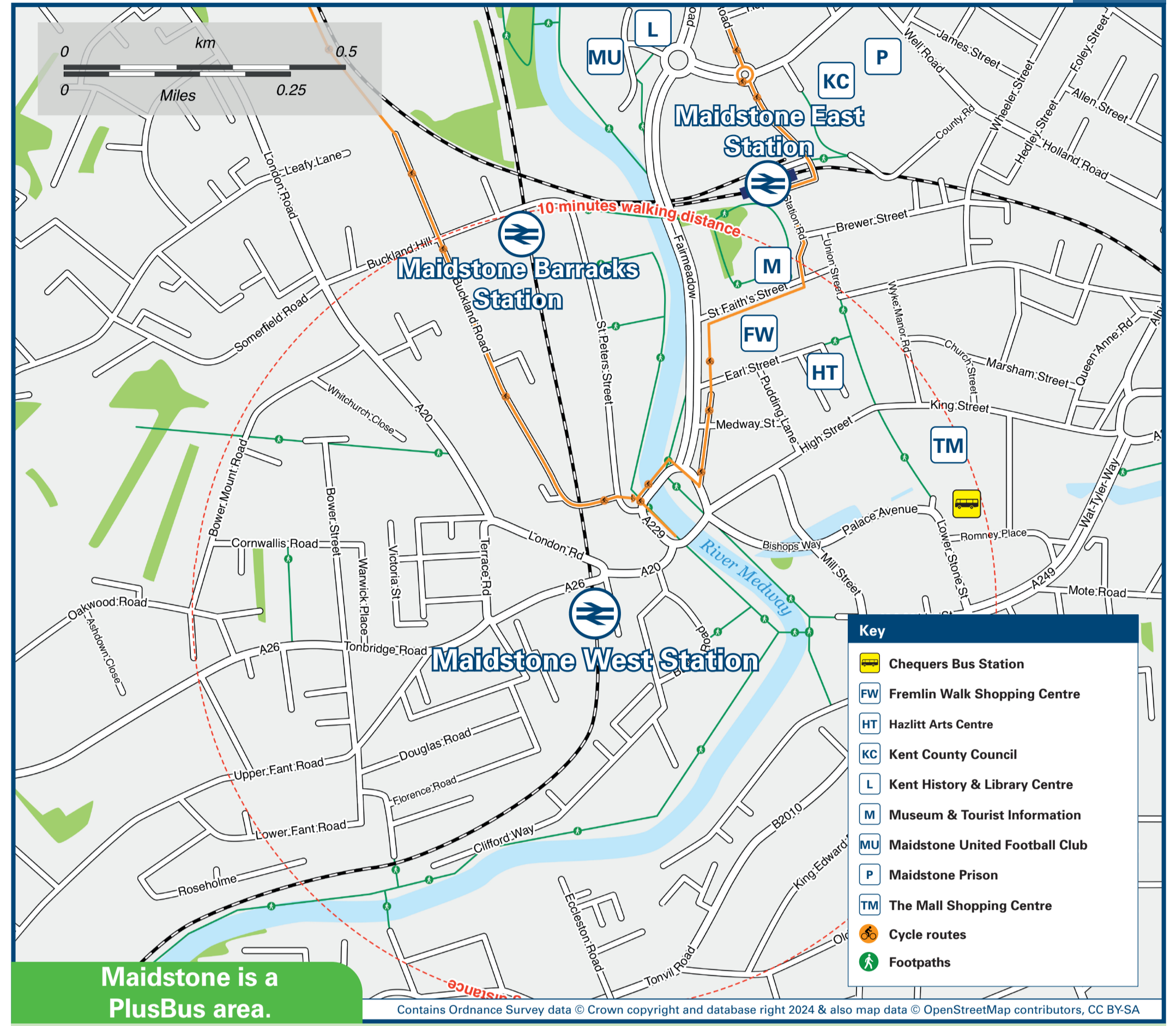
# Onward Travel Information

## Buses and Taxis



Rail replacement buses depart from the replacement bus stop outside the station entrance on Station Approach.

## Local area map



Maidstone is a PlusBus area.

PlusBus is a discount price 'bus pass' that you buy with your train ticket. It gives you unlimited bus travel around your chosen town, on participating buses. Visit [www.plusbus.info](http://www.plusbus.info)

## Main destinations by bus

(Data correct at July 2024)



| DESTINATION                                       | BUS ROUTES   | BUS STOP |
|---|--|----------|
| Allington   | 58*, 60*, 71, 72   | A.1      |
| Ashford (& Ashford International Station) @       | 10X  | T        |
| Aylesford Retail Park (London Road)               | 58*, 71, 72  | A.1      |
| Barming Village (Tonbridge Road)                  | 3, 6, 7, 78*, 88*  | A.2      |
| Bearsted (The Yeoman, Ashford Road) @             | 10X  | T        |
| Charing @   | 10X  | T        |
| Ditton Corner                                     | 58*, 71, 72  | A.1      |
| Faversham   | X3   | T        |
| Hermitage Park (Chapelfield Way, Cranford Road)   | 60*  | A.1      |
| Hollingbourne (Great Danes Hotel) @               | 10X  | T        |
| Kings Hill  | 72   | A.1      |
| Larkfield   | 58*, 71, 72  | A.1      |
| Lenham @  | 10X  | T        |
| Leybourne Turn (A2 London Road)                   | 72   | A.1      |
| Maidstone (Chequers Bus Station or King Street) @ | 15 minutes walk from this station via Broadway & High Street<br>3, 6, 7, 58*, 60*, 71, 72, 78*, 79*, 88* | U        |
| Maidstone East Station                            | 20 minutes walk from this station via Broadway, High Street & Week Street                                |          |

| DESTINATION                                     | BUS ROUTES        | BUS STOP |
|---|-------------------|----------|
| Maidstone Hospital                              | 3                 | A.2      |
| Maidstone (Oakwood Park, for Mid Kent College)  | 60*               | A.1      |
| Maidstone (Weaving Street, for Mote Park)       | 3, 6, 7, 78*, 88* | A.2      |
| Mereworth                                       | 10X               | T        |
| Nettlestead                                     | 7                 | A.2      |
| Paddock Wood @                                  | 6                 | A.2      |
| Palace Wood (Howard Drive, Montpelier Gate)     | 6                 | A.2      |
| Palace Wood (Poplar Grove, Riverhead Close)     | 60*               | A.1      |
| Pembury (Tunbridge Wells Hospital)              | 60*               | A.1      |
| Preston Hall (for Royal British Legion Village) | 6                 | A.2      |
| Sittingbourne (Railway Station)#                | 58*, 71, 72       | A.1      |
| Stockbury Village (Rumstead Lane)               | X3                | T        |
| Teston  | X3                | T        |
| Teynham   | 6, 7, 88*         | A.2      |
| Tonbridge (Town Centre & Railway Station) @     | X3                | T        |
| Tunbridge Wells (Town Centre & Railway Station) | 7                 | A.2      |
|   | 6, 7              | A.2      |

| DESTINATION                 | BUS ROUTES | BUS STOP |
|-----------------------------|------------|----------|
| Vinters Park (Hilton Hotel) | X3         | T        |
| Wateringbury @              | 6, 7, 88*  | A.2      |
| West Malling @              | 58*, 72    | A.1      |

**Notes**

- PlusBus destination, please see below for details.
- Bus routes 3, 7 and 71 operate daily.
- Bus routes 6, 10X, 72 & X3 operate Mondays to Saturdays.
- For bus times and further information contact Arriva Kent & Surrey (for bus routes 3, 6, 7, 71 and 72) call 0344 800 44 11; Nu-Venture (for bus routes 58, 60 & 79) call 01622 882 288 or Stagecoach South East (for bus routes 10X and X3) call 0345 241 8000 or contact Traveline on 0871 200 22 33.
- @ Direct trains operate to this destination from this station.
- @ Direct trains operate to this destination from Maidstone East station.
- @ Buses to additional destinations leave from Maidstone town centre, contact Traveline for details.
- # Change at Sittingbourne for direct trains and bus route 334 to Sheerness-on-Sea.
- \* Bus routes 58, 60, 78, 79 and 88 operate Mondays to Fridays only, please check the timetable.

## Taxis

Maidstone West Station is served by a taxi rank or cab office. Check availability before travelling, and pre-book if necessary. Please consider using the following local operators: (Inclusion of this number doesn't represent any endorsement of the taxi firm)

**Apollo Taxis**  
01622 882 020

**Sapphire**  
01622 663 000

**Streamline**  
01622 750 000

## Further information about all onward travel

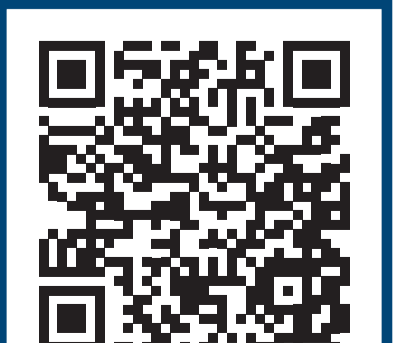
|   |   |  |   |   |
|---|---|--|---|---|
| <b>Local Cycle Info</b><br><a href="http://maidstone.gov.uk">maidstone.gov.uk</a><br>For more information about cycle routes. | <b>National Cycle Info</b><br><a href="http://sustrans.org.uk">sustrans.org.uk</a><br>Sustrans is the UK's leading sustainable transport charity. | <b>Bus Times</b><br>See timetable displays at bus stops.<br><br><a href="http://www.traveline.info">www.traveline.info</a><br>0871 200 22 33<br>call cost 13p per minute plus your phone company's access charge | <b>NextBuses</b><br>Download on the App Store<br><b>Find the bus times for your stop.</b><br>Search for a bus stop by entering a postcode, street & town or a stop name & town. | <b>PlusBus</b><br><a href="http://plusbus.info">plusbus.info</a><br>A discount price 'bus pass' that you buy with your train ticket. It gives you unlimited bus travel around your chosen town, on participating buses. |
|---|---|--|---|---|

## National Rail Enquiries

|   |  |   |   |  |  |
|---|--|---|---|--|--|
| <b>Online</b><br><a href="http://nationalrail.co.uk">nationalrail.co.uk</a> | <b>NRE App</b><br>Free National Rail Enquiries app for iOS and Android | <b>Social Media</b><br>facebook.com/nationalrailenq<br>@nationalrailenq | <b>Alert Me</b><br>You can sign up to Alert Me messages on the National Rail Enquiries website where you can receive train and platform notifications directly to your smart phone.<br><a href="http://nationalrail.co.uk/alertme">nationalrail.co.uk/alertme</a> | <b>Contact Centre</b><br>03457 48 49 50<br>Calls cost no more than calls to geographic numbers (01 or 02) and may be recorded. | <b>PlusBike</b><br><a href="http://nationalrail.co.uk/plusbike">nationalrail.co.uk/plusbike</a><br>For more information. |
|---|--|---|---|--|--|



**National Rail**  
Britain's train companies working together



This poster shows details of popular destinations and main, frequent bus routes. Additional services may run, so please check with Traveline or see posters at local bus stops. Whilst considerable care has been taken to ensure the information contained on this poster is correct and accurate, National Rail cannot accept responsibility for any loss or inconvenience caused by any errors or omissions, or for loss, damage, injury or inconvenience relating to the cancellation, alteration, delay or diversion of a service. For any feedback, please e-mail [comments@onwardtravelposters.com](mailto:comments@onwardtravelposters.com)

Scan this code with your mobile for full station information.