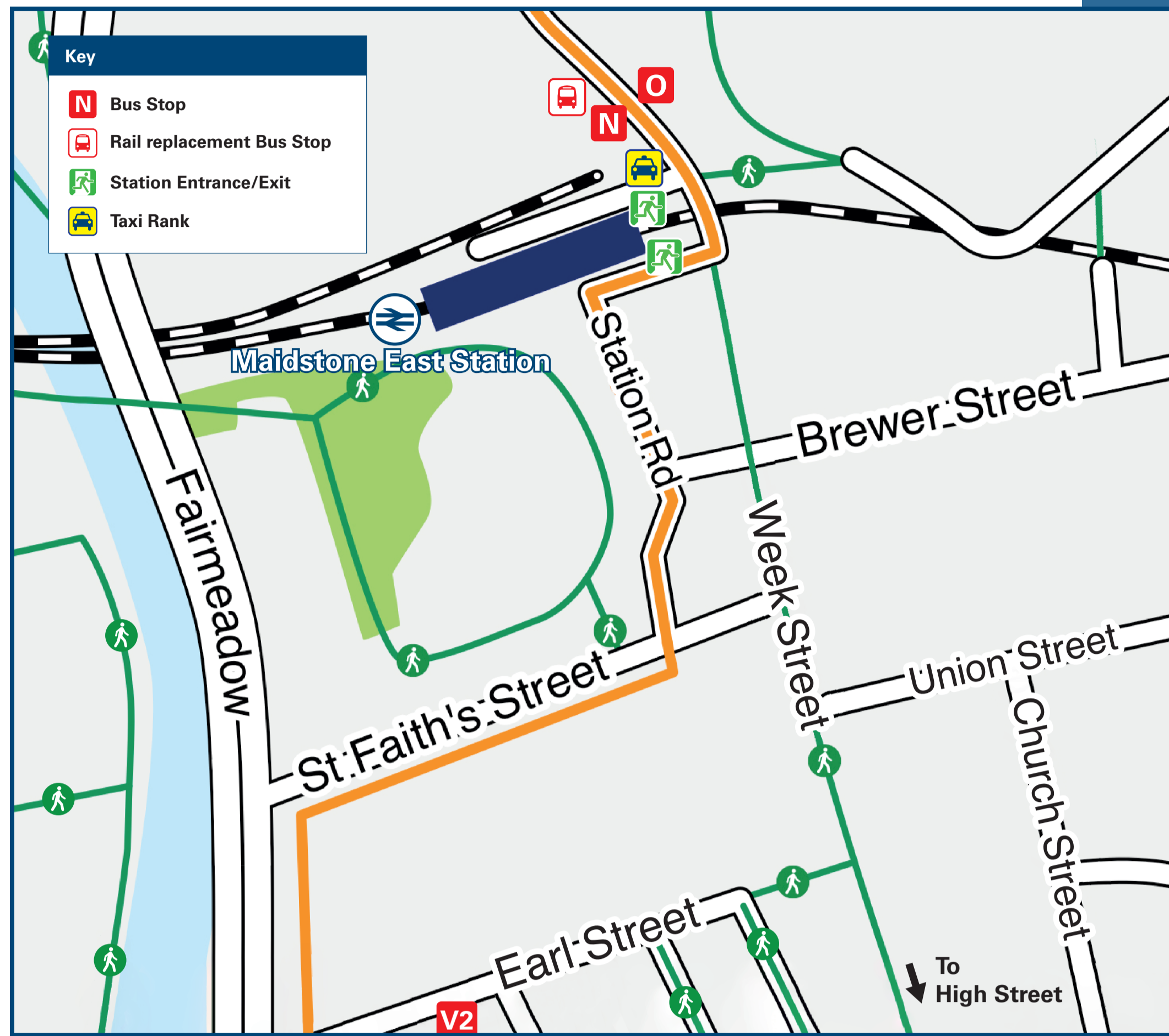




Maidstone East Station

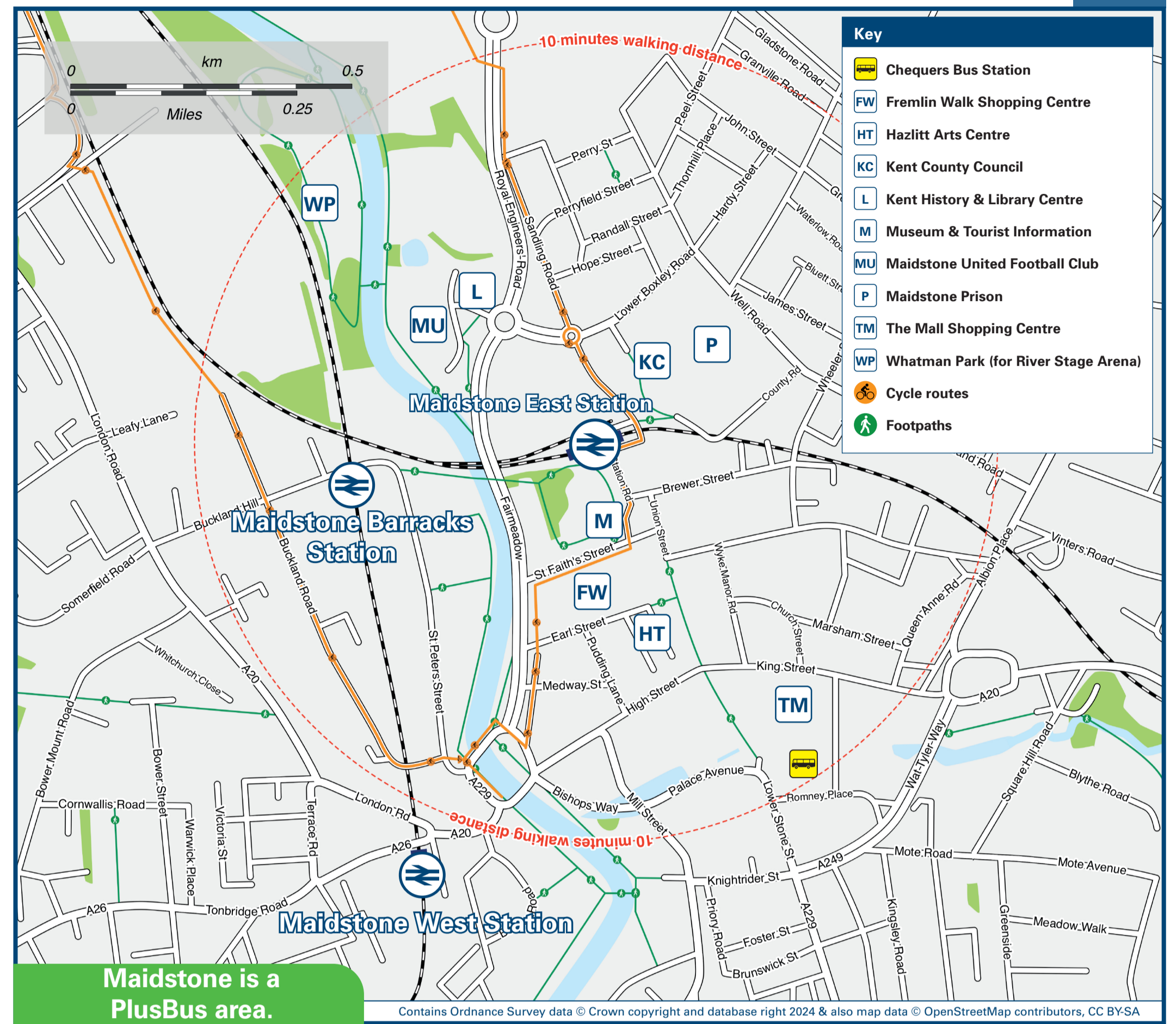
Onward Travel Information

Buses and Taxis



Rail replacement buses depart from bus stop N on Week Street.

Local area map



Maidstone is a PlusBus area.



PlusBus is a discount price 'bus pass' that you buy with your train ticket. It gives you unlimited bus travel around your chosen town, on participating buses. Visit www.plusbus.info

Main destinations by bus

(Data correct at July 2024)

| DESTINATION | BUS ROUTES | BUS STOP |
|---|------------|----------|
| Bearsted (The Yeoman, Ashford Road) | 10X | V 2 |
| Blue Bell Hill (Main Road)* | 101* | N |
| Boxley | 130 | N |
| Bredhurst | 130 | N |
| Chatham (Railway Station) | 101 | N |
| Chatham (Waterfront Bus Station) | 101 | N |
| Davis Estate | 101 | N |
| Faversham | X3 | V 2 |
| Gillingham (Victoria Street, for Station) | 101 | N |
| Hempstead Valley | 130 | N |

| DESTINATION | BUS ROUTES | BUS STOP |
|---|------------|----------|
| Maidstone (Town Centre) # | 101, 130 | O |
| Maidstone (Weaving Street, for Mote Park) | 10X | V 2 |
| Parkwood | 130 | N |
| Penenden Heath | 130 | N |
| Rainham | 130 | N |
| Ringlestone | 101 | N |
| Sittingbourne (Railway Station) # | X3 | V 2 |
| Springfield | 101 | N |
| Teynham | X3 | V 2 |

| DESTINATION | BUS ROUTES | BUS STOP |
|-----------------------------|------------|----------|
| Twydall | 101**, 130 | N |
| Vinters Park (Hilton Hotel) | X3 | V 2 |
| Wigmore | 130 | N |

Notes

- PlusBus destination, please see below for details.
- Bus routes 10X, 130 and X3 operate Mondays to Saturdays. Bus route 101 operates daily.
- For bus times and further information contact Arriva Kent & Surrey (for bus route 101 & other local services) see www.arrivabus.co.uk/help/contact-us or call 0344 800 44 11; Nu-Venture (for bus route 130) www.nu-venture.co.uk or call 01622 882 288; Stagecoach South East (for bus routes 10X & X3) see www.stagecoachbus.com/help-and-contact or call 0345 241 8000 or contact Traveline on 0871 200 22 33.
- * Bus route 101 serves Blue Bell Hill after 20:00 on Monday to Saturday evenings only.
- ** Bus route 101 serves Twydall on Monday to Saturday evenings and daytime on Sundays and Bank Holidays.
- @ Buses to additional destinations leave from Maidstone Chequers Bus Station and other town centre bus stops, contact Traveline for details.
- # Change at Sittingbourne for direct trains and bus route 334 to Sheerness-on-Sea.

Taxis

Maidstone East is served by a taxi rank or cab office. Check availability before travelling, and pre-book if necessary. Please consider using the following local operators: (Inclusion of this number doesn't represent any endorsement of the taxi firm)

Apollo Taxis
01622 882 020

Sapphire Cars
01622 663 000

Streamline
01622 750 000

Further information about all onward travel

| | | | | |
|--|--|--|---|--|
| Local Cycle Info maidstone.gov.uk <small>For more information about cycle routes.</small> | National Cycle Info sustrans.org.uk <small>Sustrans is the UK's leading sustainable transport charity.</small> | Bus Times <small>See timetable displays at bus stops.</small> www.traveline.info 0871 200 22 33 <small>calls cost 13p per minute plus your phone company's access charge</small> | NextBuses Find the bus times for your stop. <small>Search for a bus stop by entering a postcode, street & town or a stop name & town.</small> | PlusBus plusbus.info <small>A discount price 'bus pass' that you buy with your train ticket. It gives you unlimited bus travel around your chosen town, on participating buses.</small> |
|--|--|--|---|--|

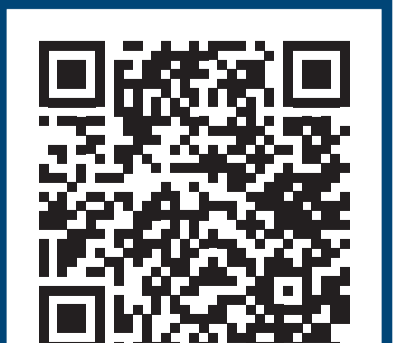
National Rail Enquiries

| | | | | | |
|---|---|--|--|--|---|
| Online nationalrail.co.uk | NRE App Free National Rail Enquiries app for iOS and Android | Social Media facebook.com/nationalrailenq @nationalrailenq | Alert Me <small>You can sign up to Alert Me messages on the National Rail Enquiries website where you can receive train and platform notifications directly to your smart phone.</small> nationalrail.co.uk/alertme | Contact Centre 03457 48 49 50 <small>Calls cost no more than calls to geographic numbers (01 or 02) and may be recorded.</small> | PlusBike nationalrail.co.uk/plusbike <small>For more information.</small> |
|---|---|--|--|--|---|

southeastern



National Rail
Britain's train companies working together



This poster shows details of popular destinations and main, frequent bus routes. Additional services may run, so please check with Traveline or see posters at local bus stops. Whilst considerable care has been taken to ensure the information contained on this poster is correct and accurate, National Rail cannot accept responsibility for any loss or inconvenience caused by any errors or omissions, or for loss, damage, injury or inconvenience relating to the cancellation, alteration, delay or diversion of a service. For any feedback, please e-mail comments@onwardtravelposters.com

Scan this code with your mobile for full station information.