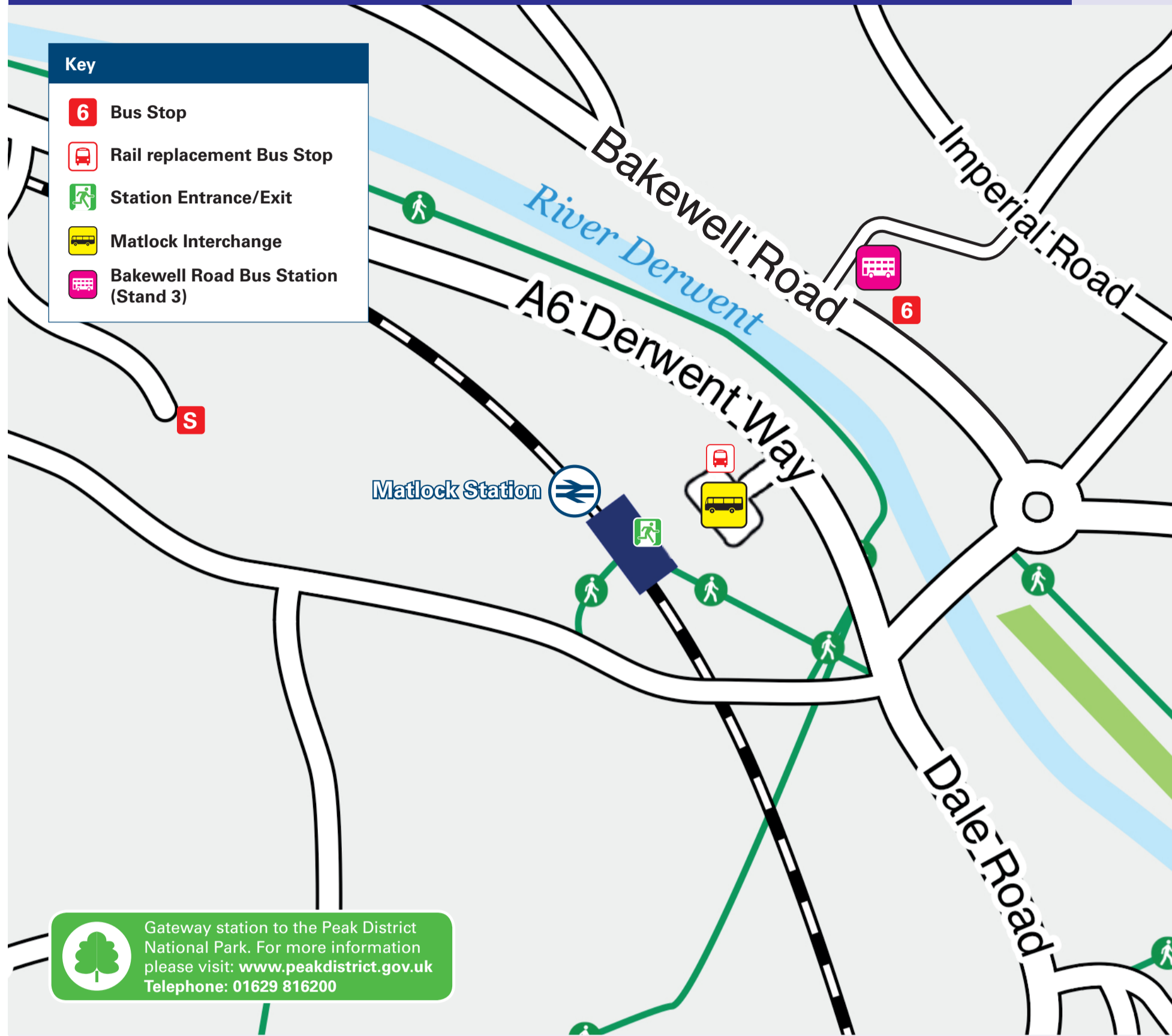




Onward Travel Information

Matlock Station

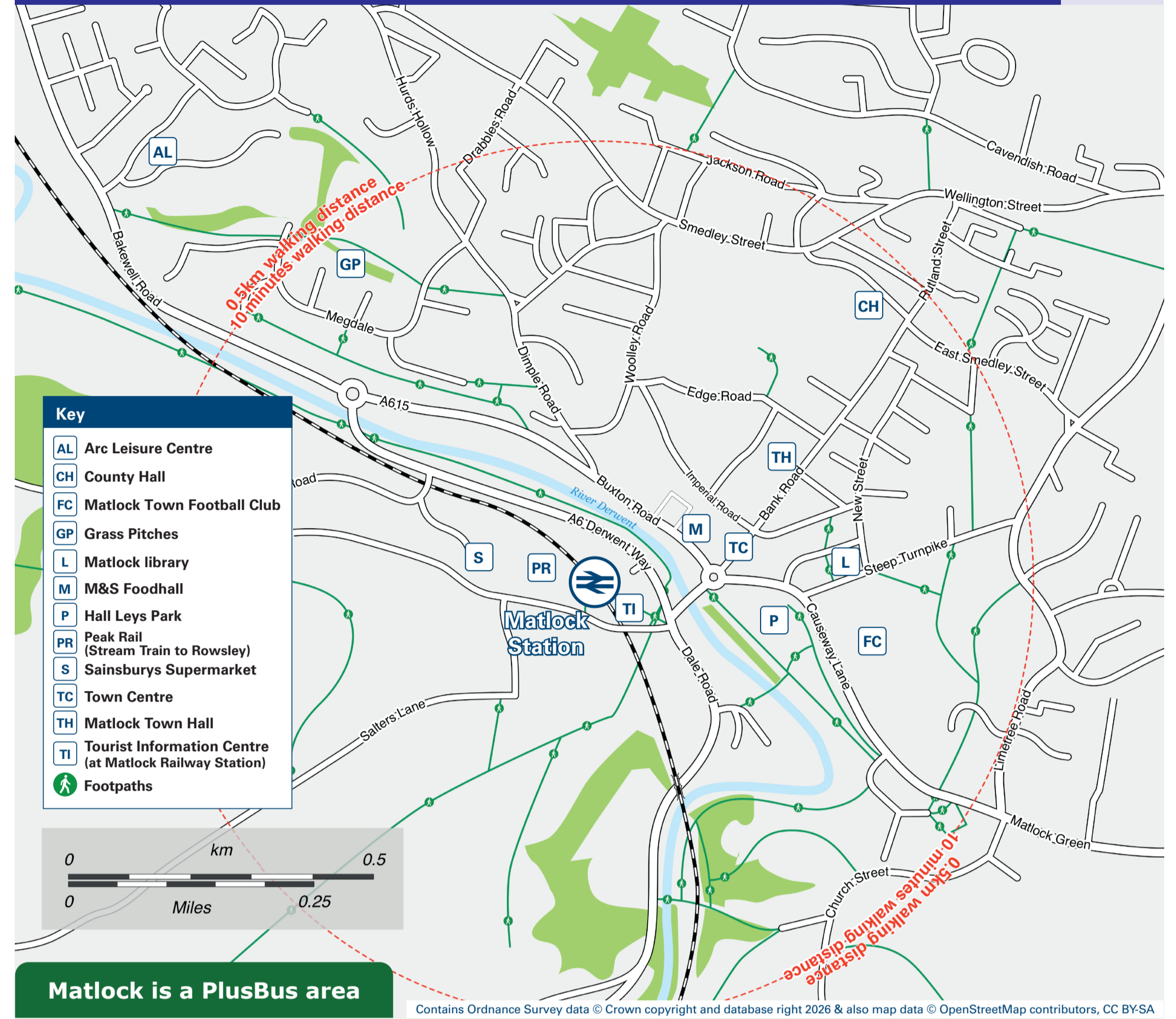
Buses



Gateway station to the Peak District National Park. For more information please visit: www.peakdistrict.gov.uk
Telephone: 01629 816200

Rail replacement buses pick-up/drop-off from the new bus station interchange.

Local area map



Matlock is a PlusBus area



Add **PlusBus** to your train ticket—now available on eTicket from leading rail ticketing apps—for unlimited bus travel in the **PlusBus** zone in your destination town or city. Visit plusbus.info

Main destinations by bus

(Data correct at April 2026)



DESTINATION	BUS ROUTES	BUS STOP
Alfreton	140*, 143*, 143a*	Stand 2
Ambergate	TP(Transpeak)	Stand 3
Ashbourne	110*, 111*	Stand 3
Ashford-in-the-Water	TP(Transpeak)	Interchange 1
Ashover	63*	Stand 2
Asker Lane (Matlock)	157*	Stand 3, S
Bakewell	6.1, TP(Transpeak)	Matlock Interchange 1
Barnsley	172	Stand 3
Beeley	X17	Stand 1
Belper	160*	Stand 3
Birchover	6.1, TP(Transpeak)	Stand 3
Blackwell	172	Stand 3
Blackwell	143*	Stand 2
Bonsall (Uppertown)	158*	Stand 3
Brackenfield	143*, 143a*	Stand 2
Bullbridge	141*	Stand 2
Buxton	TP(Transpeak)	Matlock Interchange 1
Carsington Village (Main Street)	110*, 111*	Stand 3
Carsington Water (Visitor Centre)	110*, 111*	Stand 3
Cavendish Park (Matlock)	157*	Stand 3, S
Chatsworth House	160*	Stand 2
Chesterfield	X17	Stand 1
Clay Cross	63*	Stand 2
Crich (Market Place)	63*	Stand 2
Crich Tramway Museum	140*, 141*, 143a*	Stand 2
Cromford	6.1	Matlock Interchange 1
Cromford	6.1, 110*, 111*, 158*, TP(Transpeak), X17	Stand 3
Darley Bridge	140*	Stand 2
Darley Dale	172	Stand 3

DESTINATION	BUS ROUTES	BUS STOP
Darley Dale	6.1, TP(Transpeak)	Matlock Interchange 1
Derby	160*, 172	Stand 3
Duffield	6.1, TP(Transpeak)	Stand 3
East Midlands Designer Outlet	143*, 143a*	Stand 2
Elton	172	Stand 3
Hackney	160*	Stand 3
Heage	141*	Stand 2
Hilcote (Arms & Hall)	143*	Stand 2
Holloway	140*, 141*	Stand 2
Hurst Farm Estate (Hurst Rise, Matlock)	159*	Stand 3
Lea	140*, 141*	Stand 2
Matlock Bath	6.1, 110*, 111*, TP(Transpeak), X17	Stand 3
Matlock Green	140*	Stand 2
Matlock Green	141*, 143*, 143a*, X17#	Stand 2
Matlock Green	140*	Stand 1
Matlock (Sainsburys)	(10 minutes walk from this station)	
Meadowhall (Sheffield)	X17	Stand 1
Middleton-by-Wirksworth	6.1	Matlock Interchange 1
Middleton-by-Youlgreave	6.1, 110*, 111*	Stand 3
Middleton Top	172	Stand 3
Nether Heage	110*, 111*	Stand 3
Oakerthorpe	141*	Stand 2
Ripley	140*, 143*, 143a*	Stand 2
Ripley	141*	Stand 2
Rowsley	141*	Stand 2
Rowsley	6.1, TP(Transpeak)	Matlock Interchange 1
Rowsley	160*	Stand 3
Sheffield	X17	Stand 1
South Wingfield	140*	Stand 2
Stanton in Peak	140*	Stand 2
Stanton in Peak	172	Stand 3

DESTINATION	BUS ROUTES	BUS STOP
Starkholmes	158*	Stand 3
Steeple Grange	6.1	Matlock Interchange 1
Steeple Grange	6.1, 110*, 111*, X17	Stand 3
Taddington	TP(Transpeak)	Matlock Interchange 1
Tansley	141*, 143*, 143a*	Stand 2
Wensley	172	Stand 3
Wessington	143*, 143a*	Stand 2
Westhouses (Station Hotel)	143*, 143a*	Stand 2
Whatstandwell	TP(Transpeak)	Stand 3
Wingerworth	63*	Stand 2
Winstar (for Market House)	172	Stand 3
Wirksworth	6.1	Matlock Interchange 1
Wirksworth	6.1, 110*, X17	Stand 3
Youlgreave	172	Stand 3

NOTES

- PlusBus destination, please see below for details.
- Plusbus tickets are only valid in the Peak District Plusbus zone (including Matlock and Buxton) on High Peak Buses and Stagecoach.
- Bus routes 6.1, 172, TP(Transpeak) and X17 operate daily.
- Peak Rail (Preserved Railway Line) runs from Matlock Station. For more information including running days: www.peakrail.co.uk, or please telephone 01629 818 022.
- For bus times and days of operation please contact Traveline on www.traveline.info or call: 0871 200 22 33; or see www.derbsbus.info
- * Bus routes 63, 110, 111, 140, 143, 143a, 157, 158, 159 and 160 operate very limited daytime Mondays to Saturdays services, only. No Evenings or Sundays services.
- National Park Peak District National Park www.peakdistrict.gov.uk
- Direct trains operate to this destination from this station.
- Change here for connecting National Rail train services.
- Change at Buxton for trains to Chapel-en-le-Frith, Whaley Bridge, Stockport, Manchester and beyond.
- Change here for connecting Sheffield Supertram services.

Taxis

Matlock station has no taxi rank or cab office. Advance booking is essential, please consider using the following local operators: (Inclusion of this number doesn't represent any endorsement of the taxi firm)

Cross Dales Taxis
01629 650 025

Fox Cars
01629 583 333

Yaz Taxi
01629 690 091

Further information about all onward travel

Local Cycle Info	National Cycle Info	Bus Times	PlusBus
derbyshire.gov.uk/transport-roads/transport-plans/sustainable-travel For more information about cycle routes.	walkwheelcycletrust.org.uk	See timetable displays at bus stops. www.traveline.info 0871 200 22 33 public transport info please use your phone's internet browser	 plusbus.info PlusBus is a discount price 'bus pass' that you buy with your train ticket. It gives you unlimited bus travel around your chosen town, on participating buses. Visit plusbus.info

National Rail Enquiries

Online	NRE App	Social Media	Alert Me	Contact Centre	PlusBike
nationalrail.co.uk	Free National Rail Enquiries app for iOS and Android	facebook.com/nationalrailenq @nationalrailenq	nationalrail.co.uk/alertme You can sign up to Alert Me messages on the National Rail Enquiries website where you can receive train and platform notifications directly to your smart phone.	03457 48 49 50 Calls cost no more than calls to geographic numbers (01 or 02) and may be recorded.	nationalrail.co.uk/plusbike For more information.



This poster shows details of popular destinations and main, frequent bus routes. Additional services may run, so please check with Traveline or see posters at local bus stops. Whilst considerable care has been taken to ensure the information contained on this poster is correct and accurate, National Rail cannot accept responsibility for any loss or inconvenience caused by any errors or omissions, or for loss, damage, injury or inconvenience relating to the cancellation, alteration, delay or diversion of a service. For any feedback, please e-mail comments@onwardtravelposters.com

Scan this code with your mobile for full station information.