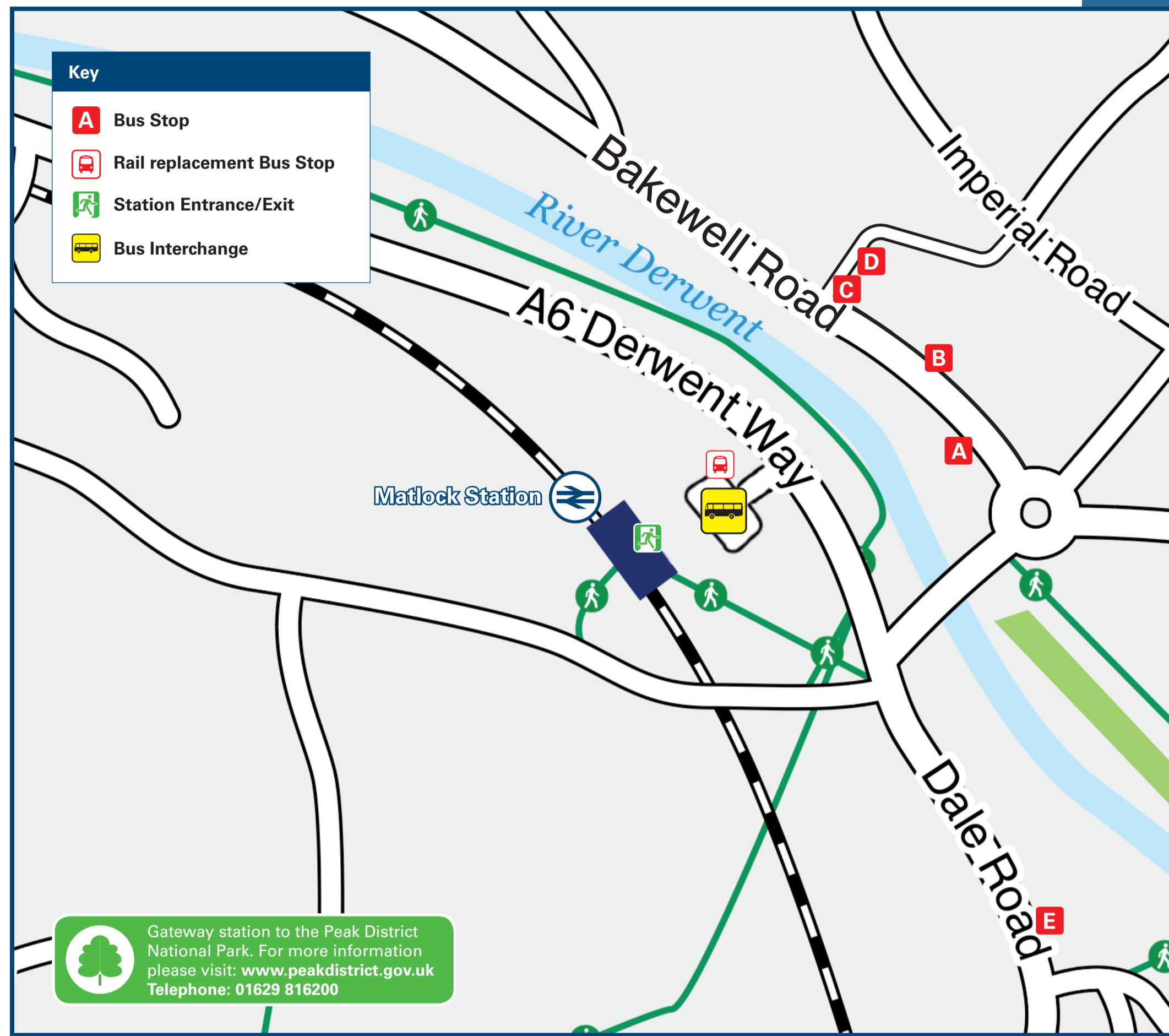




Matlock Station

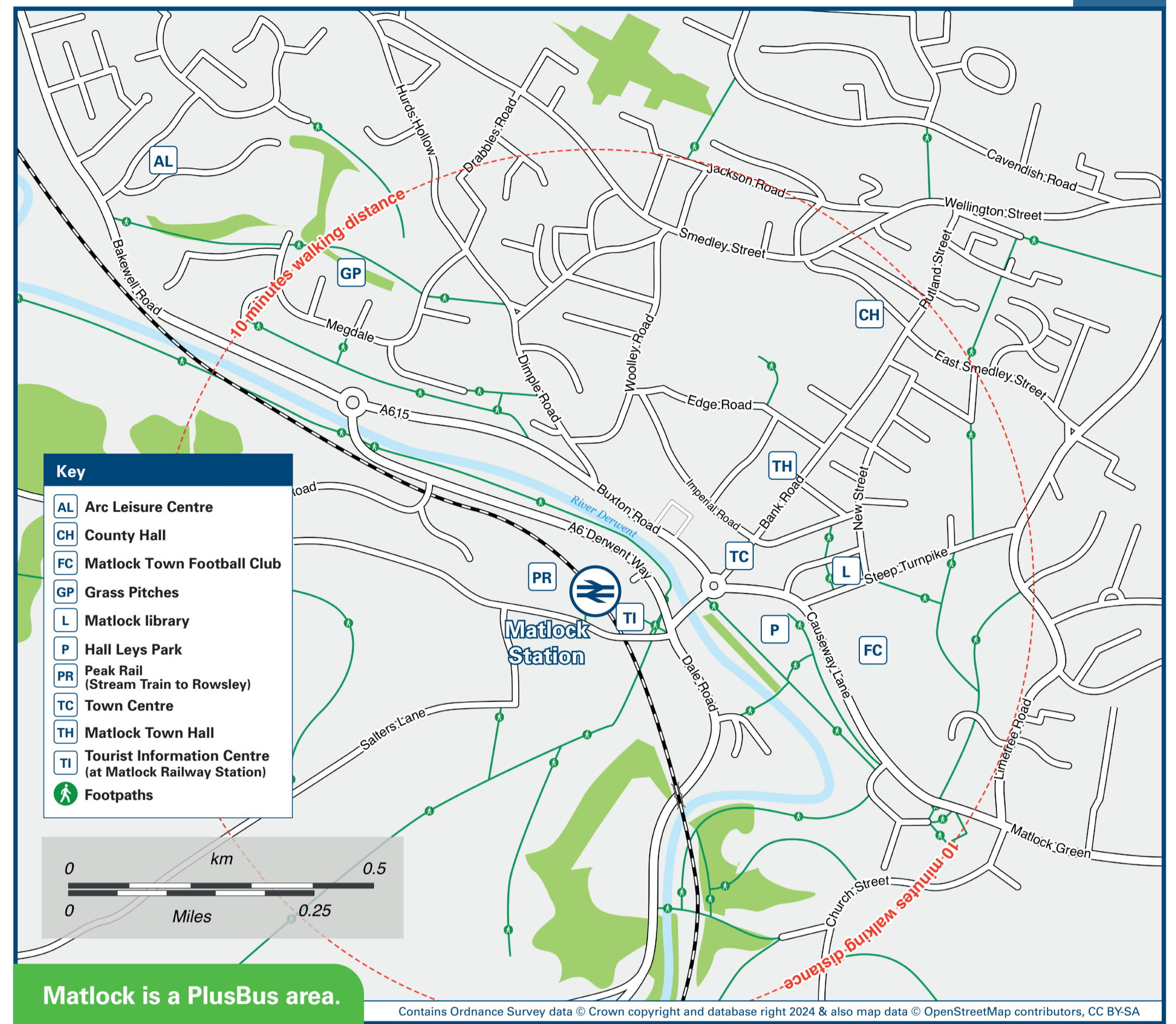
Onward Travel Information

Buses



Rail replacement buses pick-up/drop-off from the bus station interchange outside the station entrance/exit.

Local area map



PlusBus is a discount price 'bus pass' that you buy with your train ticket. It gives you unlimited bus travel around your chosen town, on participating buses. Visit www.plusbus.info

Main destinations by bus

(Data correct at April 2024)

DESTINATION	BUS ROUTES	BUS STOP
Alfreton	140, 143, 143A	B
Ambergate	TP(Transpeak)	B, E
Ashbourne	110, 111	B, E
Ashford-in-the-Water	TP(Transpeak)	B+
Ashover	63	C
Asker Lane (Matlock)	157	B
Bakewell	6.1, TP(Transpeak) 6.1, 172	D D
Barnsley	X17	C
Beeley	160	C
Belper	6.1, TP(Transpeak)	B, E
Birchover	172	D
Blackwell	143#	B
Bonsall (Uppertown)	158	B
Brackenfield	143*	B
Bullbridge	141	B, E
Buxton	TP(Transpeak)	B+
Carsington Village (Main Street)	110, 111	B, E
Carsington Water (Visitor Centre)	110**, 111**	B, E
Cavendish Park (Matlock)	157	B
Chatsworth House	160	C
Chesterfield	63, X17	C
Clay Cross	63	C
Crich (Market Place)	140, 141, 143A	B
Crich Tramway Museum	140, 141, 143A	B
Cromford	LS(Little Sixes) 6.1, 110, 111, 140, 158, LS(Little Sixes), TP(Transpeak), X17	B, E B+
Darley Bridge	172	D
Darley Dale	6.1, TP(Transpeak) 6.1, 172 160	D D C
Derby	6.1, TP(Transpeak)	B, E
Duffield	6.1, TP(Transpeak)	D, E
East Midlands Designer Outlet	143	B
Elton	172	D
Hackney	160	C
Heage	141	B, E
Hilcote (Arms & Hall)	143#	B

DESTINATION	BUS ROUTES	BUS STOP
Holloway	140, 141	B, E
Hurst Farm Estate (Hurst Rise, Matlock)	159	B
Lea	140, 141, 143A	B
Matlock Bath	LS(Little Sixes) 6.1, 110, 111, 140, LS(Little Sixes), TP(Transpeak), X17	B, E B+
Matlock Green	141, 143, 143A, 157, 158, 159	B
Matlock (Sainsburys)	X17	C
Meadowhall (Sheffield)	157, 159	C
Middleton-by-Wirksworth	X17	C
Middleton-by-Youlgreave	LS(Little Sixes) 6.1, 110, 111, LS(Little Sixes)	B, E B+
Middleton Top	172^	D
Nether Heage	110, 111	B
Oakerthorpe	141	B, E
Ripley	140, 143, 143A	B
Rise End	141	B, E
Rowsley	110, 111	B
Sheffield	6.1, TP(Transpeak)	B+
South Wingfield	6.1 160 X17	D C C
Stanton in Peak	140, 143*, 143A	B
Starkholmes	172^	D
Steeple Grange	158 63# LS(Little Sixes) 6.1, 110, 111, LS(Little Sixes), X17	B C B+
Taddington	172	D
Tansley	TP(Transpeak) 141, 143, 143A	B, E B
Wansley	172	D
Wessington	143, 143A	B
Westhouses (Station Hotel)	143#	B
Whatstandwell	TP(Transpeak)	B, E
Wingerworth	63	C
Winster (for Market House)	172	D

DESTINATION	BUS ROUTES	BUS STOP
Wirksworth	LS(Little Sixes) 6.1, 110, 111, LS(Little Sixes), X17	B, E
Youlgreave	172^	D

Notes

- PlusBus** destination, please see below for details.
 - Bus routes 6.1, TP(Transpeak) and X17 operate daily.
 - Bus routes 63, 110, 111, 140, 141, 143, 143A, 157, 158, 159, 160, 172 and LS(Little Sixes) operate Mondays to Saturdays.
 - For bus times and other bus enquiries, please contact Traveline, www.traveline.info or call 0871 200 22 33.
 - Plusbus tickets are only valid in the Peak District Plusbus zone (including Matlock and Buxton) on High Peak Buses, Hullevs of Baslow and Stagecoach.
 - Peak Rail (Preserved Railway Line) runs from Matlock Station. For more information including running days: www.peakrail.co.uk, or please telephone 01629 818 022.
 - Direct trains operate to this destination from this station.
 - Change here for connecting National Rail train services.
 - Change at Buxton for trains to Chapel-en-le-Frith, Whaley Bridge, Stockport, Manchester and beyond.
 - Change here for connecting Sheffield Supertram services.
 - + Bus Interchange stops (1) and (2) are outside Matlock Station.
 - * Bus route 143: The 08:50 journey from Matlock does not serve this destination.
 - ** To this destination bus route 110 operates at 1525 & 1715, and bus route 111 operates at 1035 & 1245 from Matlock only.
 - # To this destination bus route 143 operates at 1030, 1230 & 1430 from Matlock only.
 - ## To this destination bus route 63 operates at 0815 from Matlock on Schooldays only.
 - ^ Bus route 172: The 07:40 journey on Schooldays only from Matlock does not serve Youlgreave or Middleton-by-Youlgreave.
- National Park Peak District National Park www.peakdistrict.gov.uk

Taxis

Matlock station has no taxi rank or cab office. Advance booking is essential, please consider using the following local operators: (Inclusion of this number doesn't represent any endorsement of the taxi firm)

Cross Dales Taxis
01629 650 025

Fox Cars
01629 583 333

Yaz Taxi
01629 690 091

Further information about all onward travel

Local Cycle Info derbyshiredales.gov.uk For more information about cycle routes.	National Cycle Info sustrans.org.uk Sustrans is the UK's leading sustainable transport charity.	Bus Times See timetable displays at bus stops. www.traveline.info 0871 200 22 33 call cost 12p per minute plus your phone company's access charge	NextBuses Find the bus times for your stop. Search for a bus stop by entering a postcode, street & town or a stop name & town.	PlusBus plusbus.info A discount price 'bus pass' that you buy with your train ticket. It gives you unlimited bus travel around your chosen town, on participating buses.
---	---	--	---	---

National Rail Enquiries

Online nationalrail.co.uk	NRE App Free National Rail Enquiries app for iOS and Android	Social Media facebook.com/nationalrailenq @nationalrailenq	Alert Me You can sign up to Alert Me messages on the National Rail Enquiries website where you can receive train and platform notifications directly to your smart phone. nationalrail.co.uk/alertme	Contact Centre 03457 48 49 50 Calls cost no more than calls to geographic numbers (01 or 02) and may be recorded.	PlusBike nationalrail.co.uk/plusbike For more information.
---	--	---	---	--	--



National Rail
Britain's train companies working together



This poster shows details of popular destinations and main, frequent bus routes. Additional services may run, so please check with Traveline or see posters at local bus stops. Whilst considerable care has been taken to ensure the information contained on this poster is correct and accurate, National Rail cannot accept responsibility for any loss or inconvenience caused by any errors or omissions, or for loss, damage, injury or inconvenience relating to the cancellation, alteration, delay or diversion of a service. For any feedback, please e-mail comments@onwardtravelposters.com

Scan this code with your mobile for full station information.