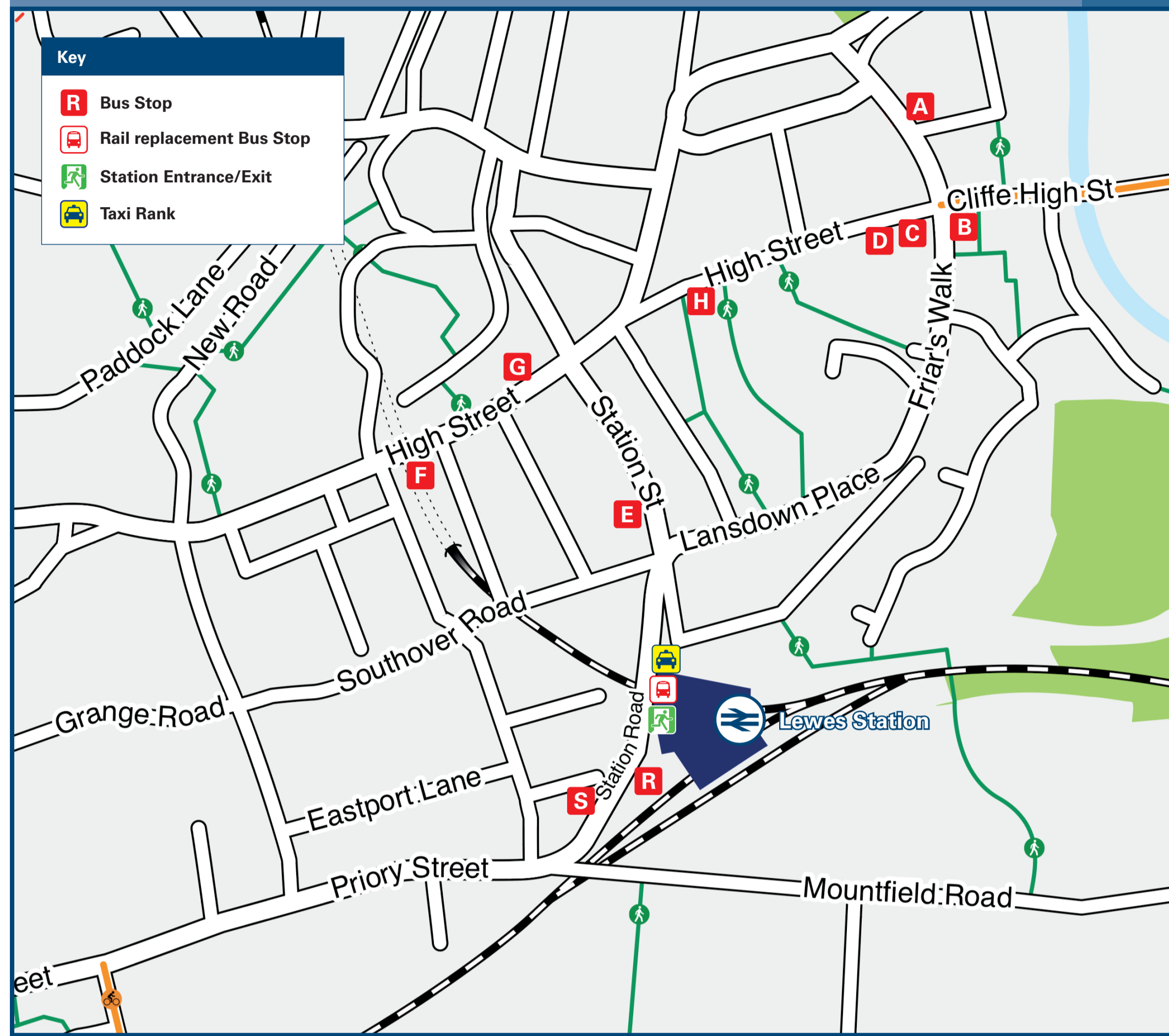




# Lewes Station

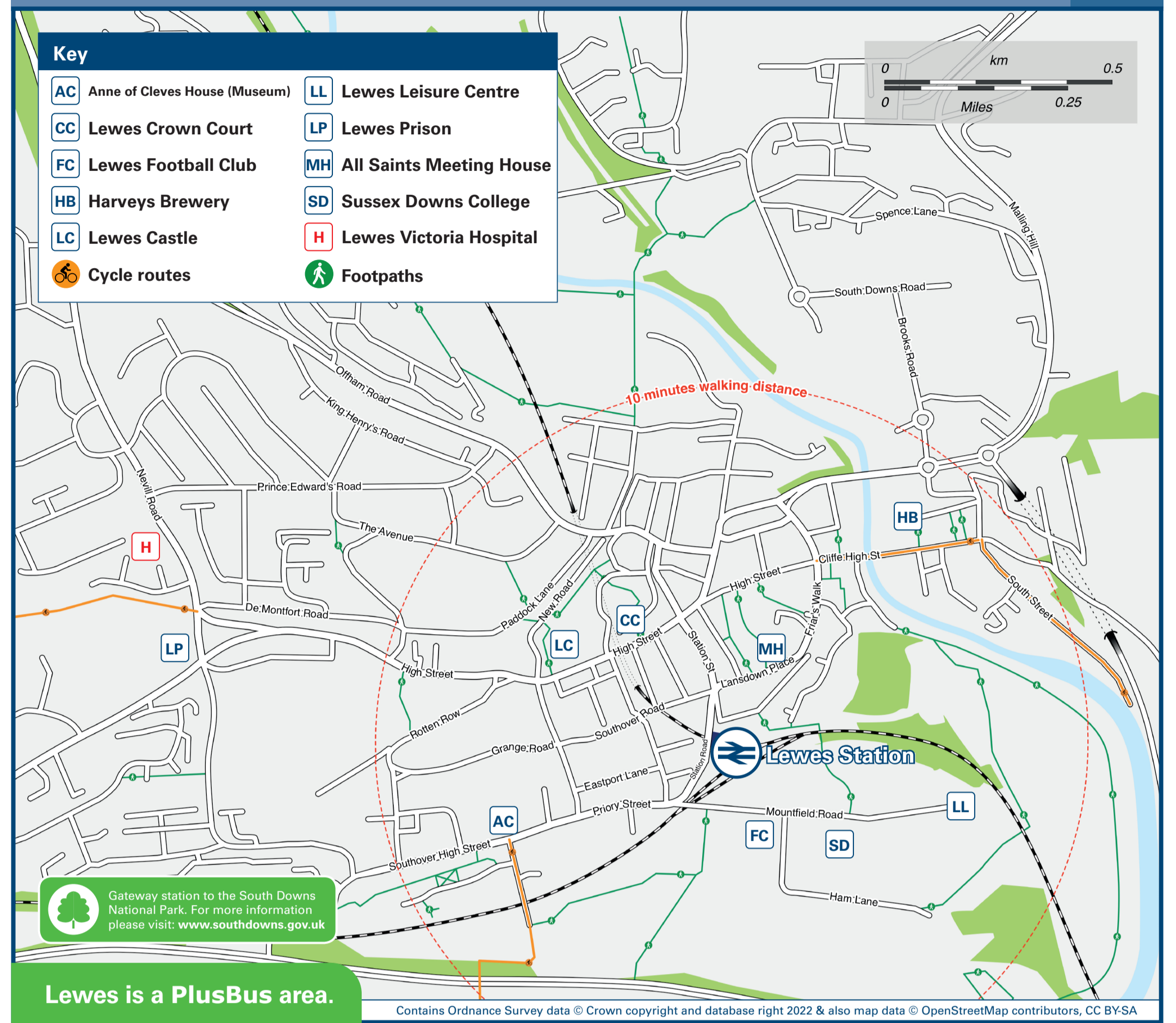
# Onward Travel Information

## Buses and Taxis



Rail Replacement buses depart from outside the station on Station Road.

## Local area map



PlusBus is a discount price 'bus pass' that you buy with your train ticket. It gives you unlimited bus travel around your chosen town, on participating buses. Visit [www.plusbus.info](http://www.plusbus.info)

## Main destinations by bus

(Data correct at April 2023)



DESTINATION	BUS ROUTES	BUS STOP
Alfriston #	25*	S
Barcombe Cross	122, 124*	D F H
Barcombe Mills	122, 124*	D F H
Berwick Drusillas Corner (for Drusillas Zoo Park) #	25*	S
Brighton (City Centre) ●	28, 29	G F H
Broyle Estate (Ringmer)	28	A G
Charleston Farm (A27)	25*, 125**	D
Cooksbridge ●	121, 122, 167^	D F H
Crowborough	28, 29	A G
Eridge Green / Eridge Station	28, 29	A G
Firle (Firle Park Gates)	25*	S
Glynde ●	25*	S
Glyndebourne Opera House	25*, 125**	D
Golden Cross	143**	D
Hailsham ##	143**	D
Halland	28+	A G
Haywards Heath ●	166**	D F H
Iford Village Turn	123, 132++	B R
Isfield (Lavender Line Station)	29	A G
Kingston-near-Lewes	123, 132++	B R
Laughton	143**	D
Lewes (HM Prison)	28, 29 129 132++	C F H B E F B E F S
Lewes (Landport Estate)	127	B E
Lewes (Malling Estate, Lambert Place)	132++	A H S
Lewes (Malling Estate, Lambert Place)	127	A H
Lewes (Malling Estate, Lambert Place)	132++	A H S
Lewes (Nevill Estate, Nevill Road)	121, 122, 124*, 166**, 167^^	D F H
Lewes (Nevill Estate, Nevill Road)	128, 129	B E F
Lewes (Nevill Estate, Nevill Road)	132++	A H S

DESTINATION	BUS ROUTES	BUS STOP
Lewes (South Malling / Malling Hill)	25*, 124*, 125**	D
Lewes (Town Centre) ●	28, 29, 128	A G
Lewes (Town Centre) ●	25*, 123, 129, 132++	S
Lewes (Victoria Hospital)	121, 122, 124*, 166**, 167^^	D F H
Lewes (Victoria Hospital)	128, 129	B E F
Lewes (Victoria Hospital)	132++	A H S
Lewes (Wallands Park, Gundreda Road / Ferrers Road)	131+++	B E
Lewes (Winterbourne Lane)	129	B E F
Newhaven ●	123, 132++	B R
Newick	121	D F H
North Chailey (for Chailey Heritage School)	121	D F H
Offham	121, 122, 166**, 167^^	D F H
Piddinghoe	123, 132++	B R
Plumpton (for Agricultural College)	166**, 167^^	D F H
Plumpton Green ●	124*, 166**, 167^^	D F H
Ringmer	28	A G
Rodmell	143**	D
Rodmell (for Monk's House National Trust)	123, 132++	B R
Selmeston	25*	S
Sheffield Park (Bluebell Railway Station)	25*, 125**	D
Sheffield Park	121*	D F H
Sheffield Park Gardens	121*	D F H
South Chailey (for Chailey School)	121, 124*	D F H
Southease Village ●	123, 132++	B R
Tunbridge Wells	28, 29	A G

DESTINATION	BUS ROUTES	BUS STOP
Uckfield	28, 29	A G
Wilmington	25*	S
Wivelsfield (Village Centre / Ote Hall Chapel)	25*, 125**	D
Wivelsfield (Village Centre / Ote Hall Chapel)	166**, 167^^	D F H

**Notes**

- PlusBus destination, please see below for details.
- Bus routes 28 and 29 operate daily.
- Bus routes 121, 122, 123, 127, 128 and 129 operate Mondays to Saturdays.
- For bus times and other bus service enquiries, please contact Traveline on 0871 200 22 33 or contact the bus operator (see below):
- Brighton & Hove Buses (for bus routes 28 & 29) call 01273 886 200; Compass Travel (for bus routes 121, 122, 123, 124, 125, 127, 128, 129, 143, 166 & 167) call 01903 690 025; CTLA (bus routes 131 & 132) or Cuckmere Buses (for bus route 25 and Ramblerbus 47 from Berwick Station) call 01323 870 920.
- Plusbus tickets are valid on all bus routes within the Lewes Plusbus zone.
- # On Saturdays, Sundays and Bank Holidays during British Summer Time, trains from Lewes connect at Berwick station with Ramblerbus 47 to this destination. Please check train and bus time connections before travelling.
- ## Alternatively take the train or bus to Polegate and change for regular buses to Hailsham.
- \* Saturdays only to this destination.
- \*\* Mondays to Fridays only and not Bank Holidays to this destination.
- ^ One bus on Mondays and Thursdays only to Cooksbridge.
- ^^ Limited journeys and/or certain days only Mondays to Fridays, please check timetable.
- + Monday to Saturday evenings and daytime Sundays and Bank Holidays only to Halland.
- ++ Limited journeys on Sundays and Bank Holidays only.
- +++ Limited journeys on Mondays, Wednesdays and Thursdays only.
- National Park South Downs National Park [www.southdowns.gov.uk](http://www.southdowns.gov.uk)
- It's a 10 minutes walk from this station to Lewes town centre, for bus stops A, B, C, D and for town centre shopping area.
- Direct trains operate to this destination from this station.

**Taxis**

Lewes is a major station where taxis are usually available on a rank. Advance booking is not normally necessary, unless arriving early in the morning or late at night. Operators who may accept bookings include: (Inclusion of this number doesn't represent any endorsement of the taxi firm)

**GM Taxis**  
01273 477 567

**Lewes Station Taxis**  
01273 803 477

**County Cars**  
01273 474 444

**Further information about all onward travel**

<b>Local Cycle Info</b> <a href="http://lewes.gov.uk">lewes.gov.uk</a> For more information about cycle routes.	<b>National Cycle Info</b> <a href="http://sustrans.org.uk">sustrans.org.uk</a> Sustrans is the UK's leading sustainable transport charity.	<b>Bus Times</b> See timetable displays at bus stops. <a href="http://www.traveline.info">www.traveline.info</a> 0871 200 22 33 call cost 12p per minute plus your phone company's access charge	<b>NextBuses</b> Find the bus times for your stop. Search for a bus stop by entering a postcode, street & town or a stop name & town.	<b>PlusBus</b> <a href="http://plusbus.info">plusbus.info</a> A discount price 'bus pass' that you buy with your train ticket. It gives you unlimited bus travel around your chosen town, on participating buses.
---	---	--	---	---

**National Rail Enquiries**

<b>Online</b> <a href="http://nationalrail.co.uk">nationalrail.co.uk</a>	<b>NRE App</b> Free National Rail Enquiries app for iOS and Android	<b>Social Media</b> facebook.com/nationalrailenq @nationalrailenq	<b>Alert Me</b> You can sign up to Alert Me messages on the National Rail Enquiries website where you can receive train and platform notifications directly to your smart phone. <a href="http://nationalrail.co.uk/alertme">nationalrail.co.uk/alertme</a>	<b>Contact Centre</b> 03457 48 49 50 Calls cost no more than calls to geographic numbers (01 or 02) and may be recorded.	<b>PlusBike</b> <a href="http://nationalrail.co.uk/plusbike">nationalrail.co.uk/plusbike</a> For more information.
---	--	---	---	--	--

**SOUTHERN** **National Rail**   
Britain's train companies working together

This poster shows details of popular destinations and main, frequent bus routes. Additional services may run, so please check with Traveline or see posters at local bus stops. Whilst considerable care has been taken to ensure the information contained on this poster is correct and accurate, National Rail cannot accept responsibility for any loss or inconvenience caused by any errors or omissions, or for loss, damage, injury or inconvenience relating to the cancellation, alteration, delay or diversion of a service. For any feedback, please e-mail [comments@onwardtravelposters.com](mailto:comments@onwardtravelposters.com). Scan this code with your mobile for full station information.