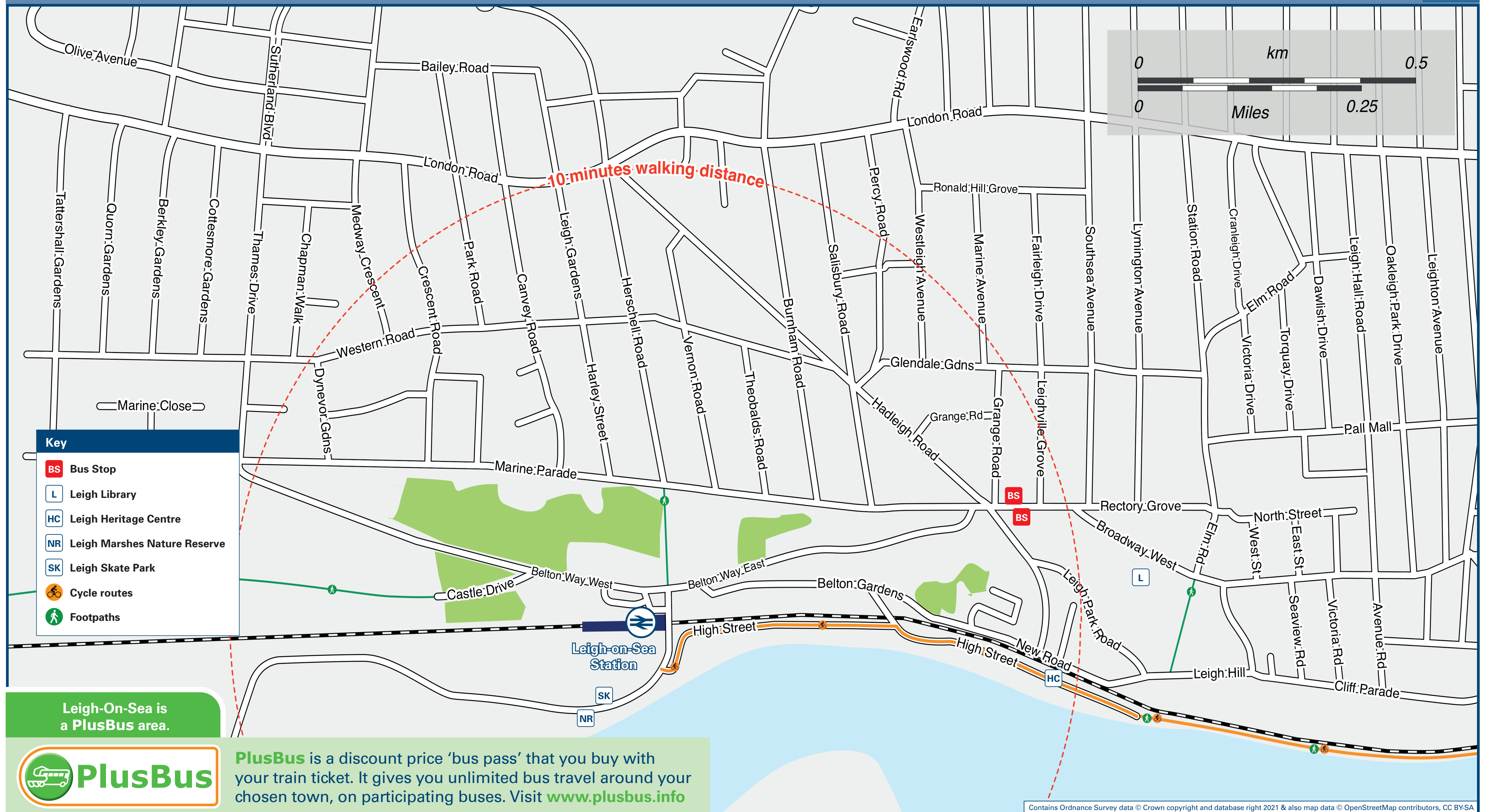




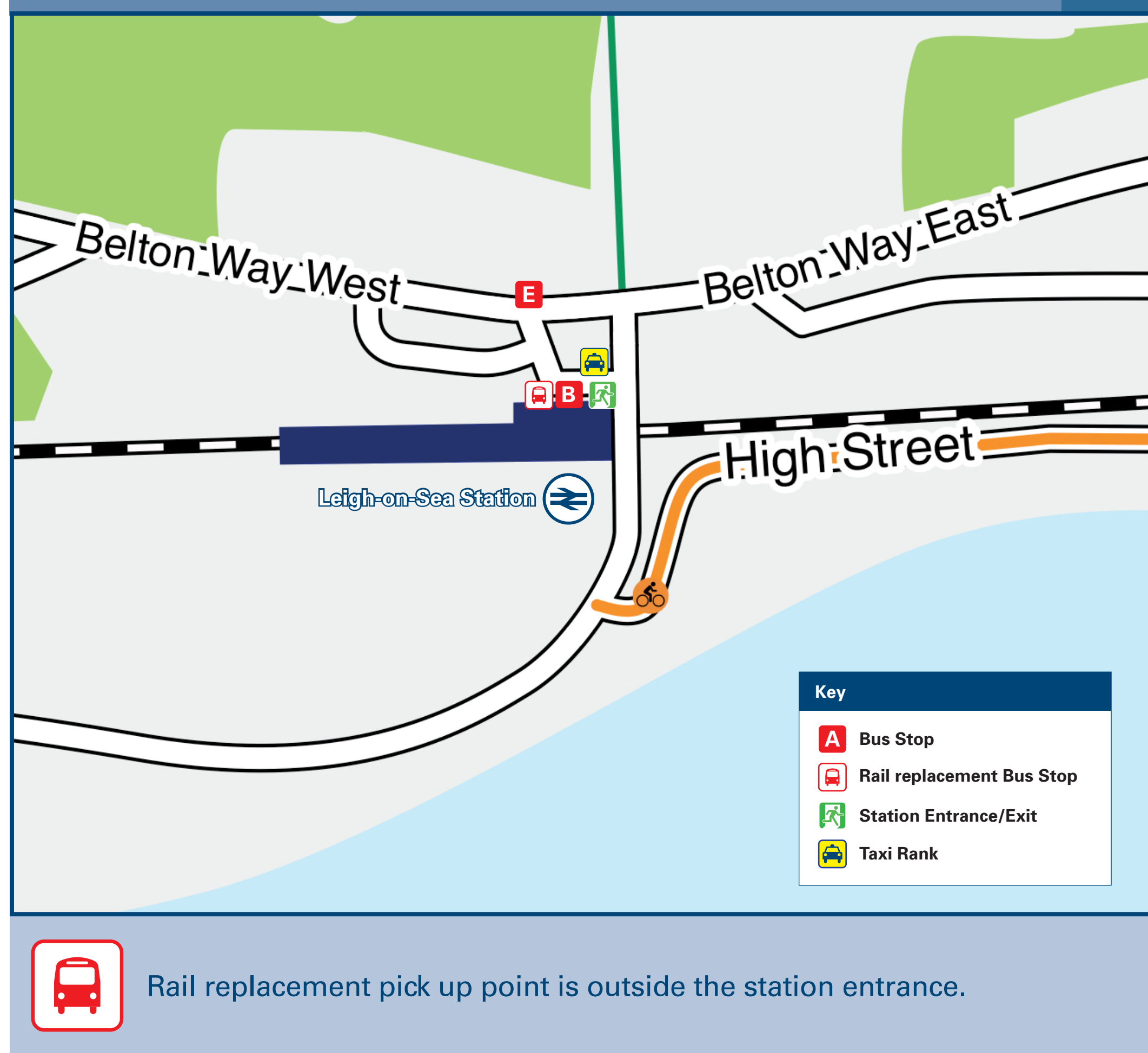
Leigh-On-Sea Station

Onward Travel Information

Local area map



Buses and Taxis



Main destinations by bus

(Data correct at March 2023)

DESTINATION	BUS ROUTES	BUS STOP
Canvey (Village & Newlands)	21	B
Chalkwell (Esplanade)	17#	B
Hadleigh	21	B
Leigh-on-Sea (Blenheim Chase)	21	E
Leigh-on-Sea (Leigh Elms/London Road)	21	E
Leigh-on-Sea (Manchester Drive)	21	E
Prittlewell	21	E
South Benfleet	21	B
Southend-on-Sea (Town Centre)	17#	B
	21*	E
Southend Hospital	21	E
Thundersley	21	B
Westcliff-on-Sea (Cliffs Pavilion)	17#	B

Notes

- PlusBus destination, please see below for details.
- Bus route 21 runs a daily service, Mondays to Sundays.
- Other bus services operate from the Rectory Grove Bus Stops (please see Local Area Map for the marked location of these stops)
- # Bus route 17 runs limited services Mondays to Fridays, only. No Saturday or Sunday service.
- ⚡ Direct trains operate to this destination from Leigh-on-Sea station

Taxis

Leigh-on-Sea Station is served by a taxi rank or a cab office. Check availability before travelling, and pre-book if necessary. Please consider using the following local operators: (Inclusion of this number doesn't represent any endorsement of the taxi firm)

333 444 Taxis **A C Radio Cabs** **Steves Radio Cars** **Steves Radio Cars**
01702 333 444 **01702 334 455** **01702 559 519** **01702 559 519**

Further information about all onward travel

Local Cycle Info southend.gov.uk For more information about cycle routes.	National Cycle Info sustrans.org.uk Sustrans is the UK's leading sustainable transport charity.	Bus Times See timetable displays at bus stops. www.traveline.info 0871 200 22 33 call cost 12p per minute plus your phone company's access charge	NextBuses Find the bus times for your stop. Search for a bus stop by entering a postcode, street & town or a stop name & town.	PlusBus plusbus.info A discount price 'bus pass' that you buy with your train ticket. It gives you unlimited bus travel around your chosen town, on participating buses.
---	---	--	--	--

National Rail Enquiries

Online nationalrail.co.uk	NRE App Free National Rail Enquiries app for iOS and Android	Social Media facebook.com/nationalrailenq @nationalrailenq	Alert Me You can sign up to Alert Me messages on the National Rail Enquiries website where you can receive train and platform notifications directly to your smart phone. nationalrail.co.uk/alertme	Contact Centre 03457 48 49 50 Calls cost no more than calls to geographic numbers (01 or 02) and may be recorded.	PlusBike nationalrail.co.uk/plusbike For more information.
---	--	---	---	---	--

c2c **National Rail**
Britain's train companies working together

This poster shows details of popular destinations and main, frequent bus routes. Additional services may run, so please check with Traveline or see posters at local bus stops. Whilst considerable care has been taken to ensure the information contained on this poster is correct and accurate, National Rail cannot accept responsibility for any loss or inconvenience caused by any errors or omissions, or for loss, damage, injury or inconvenience relating to the cancellation, alteration, delay or diversion of a service. For any feedback, please e-mail comments@onwardtravelposters.com

Scan this code with your mobile for full station information.