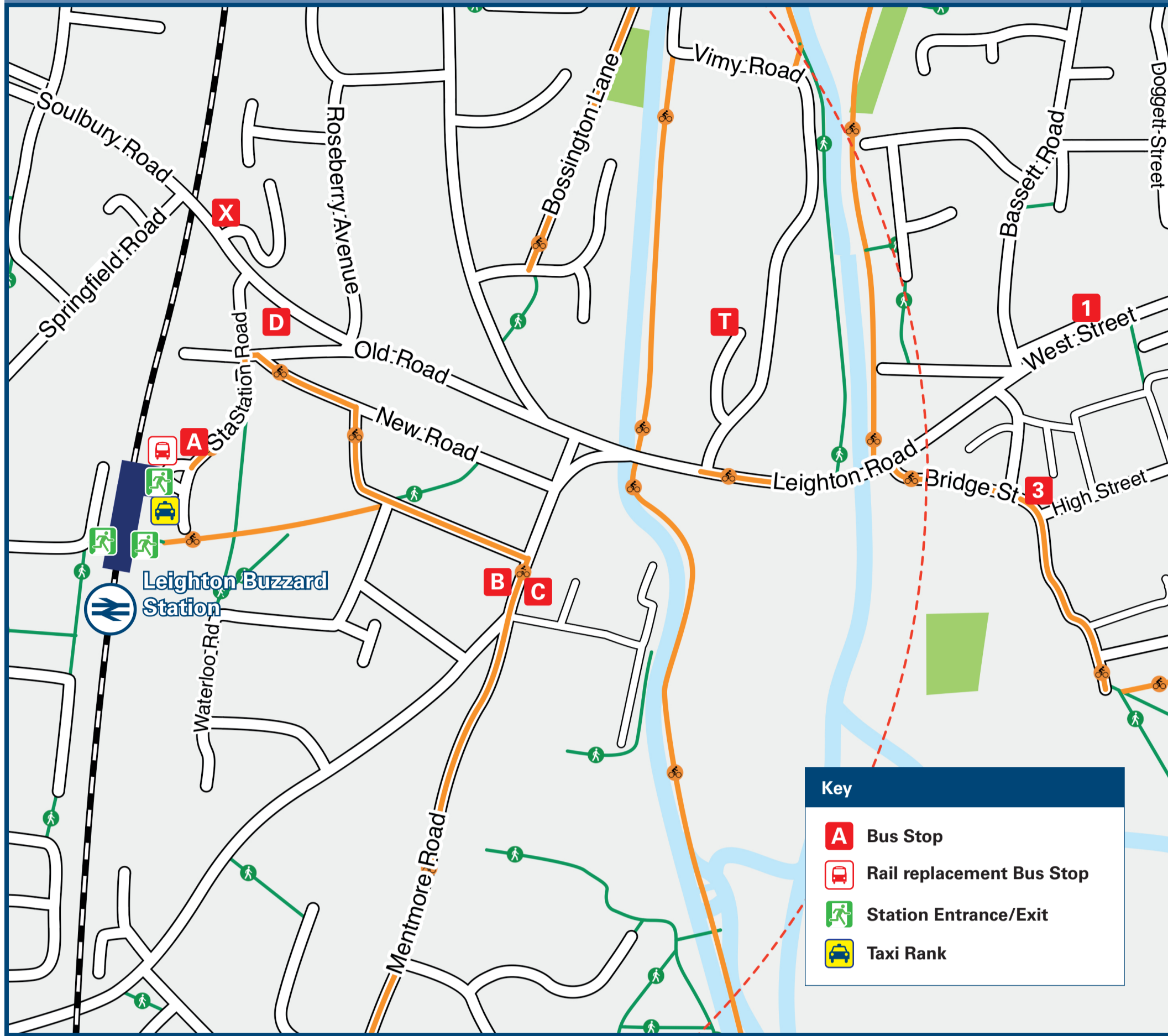




# Leighton Buzzard Station

# Onward Travel Information

## Buses and Taxis

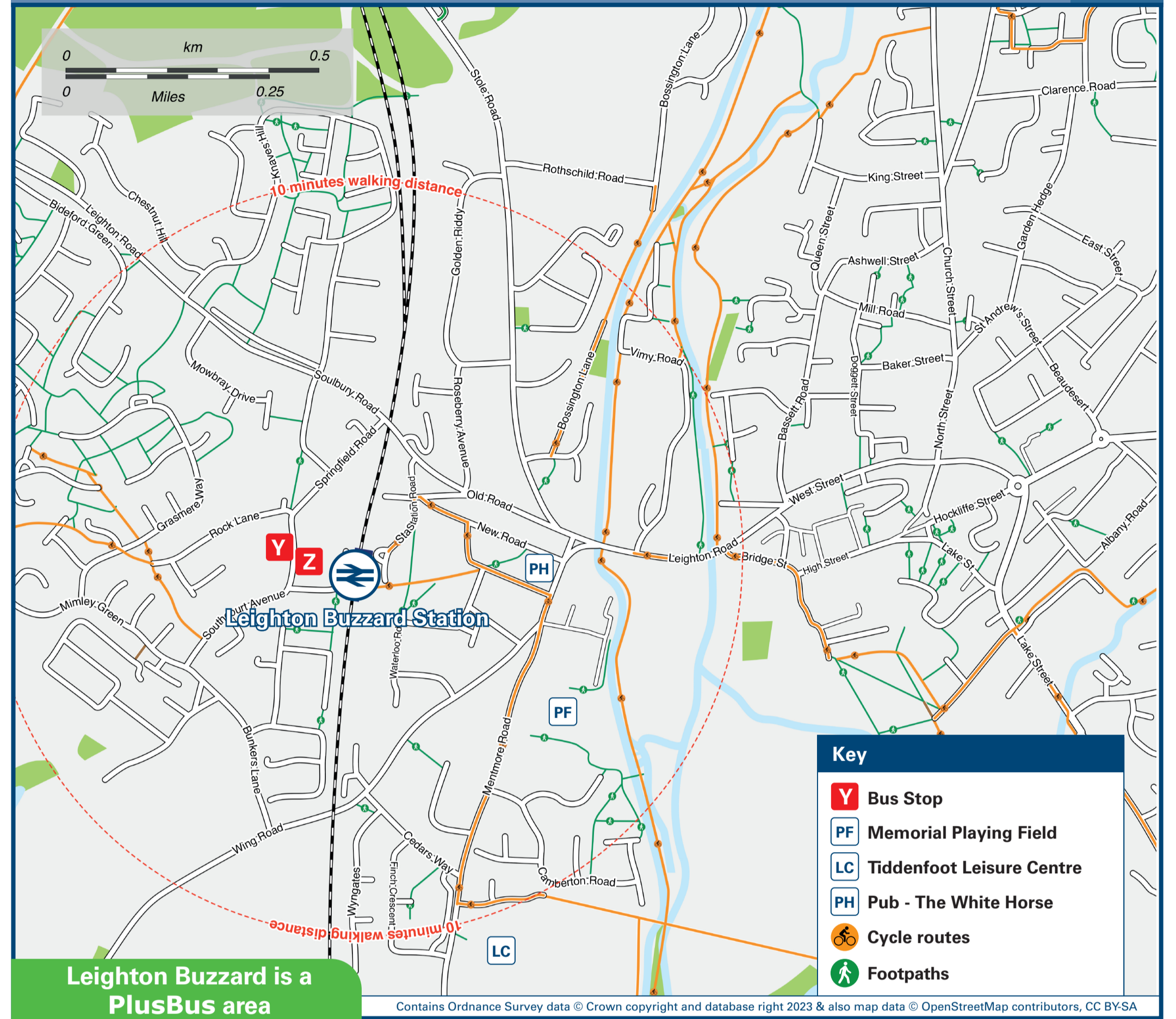


**Key**

- A** Bus Stop
- R** Rail replacement Bus Stop
- S** Station Entrance/Exit
- T** Taxi Rank

Rail replacement buses/coaches depart from outside the station.

## Local area map



**Key**

- Y** Bus Stop
- PF** Memorial Playing Field
- LC** Tiddenfoot Leisure Centre
- PH** Pub - The White Horse
- C** Cycle routes
- F** Footpaths

Leighton Buzzard is a PlusBus area



PlusBus is a discount price 'bus pass' that you buy with your train ticket. It gives you unlimited bus travel around your chosen town, on participating buses. Visit [www.plusbus.info](http://www.plusbus.info)

## Main destinations by bus

(Data correct at September 2023)



DESTINATION	BUS ROUTES	BUS STOP
Aston Abbotts	165	D, Z
Aylesbury	150, 165	D, Z
Bierton	150, 165	D, Z
Bletchley	F70, F77	A
Bow Brickhill Station	150	X, Y
Central Milton Keynes	150	X, Y
Cublington	F70, F77	A
Dunstable	165	D, Z
Fenny Stratford	F70, F77	A
Heath & Reach	F70, F77	A
Leighton Buzzard / Linslade Town area -		
- Appenine Way	150	X, Y
- Apex Park	L5	1+, 3++
- Billington Park	F70, F77, L3(Sundays)	A
- Brooklands Drive	L3, F70, F77	1+, 3++
- Chamberlains Barn	F70, F77, L3(Sundays), L4	A
- Churchill Road	L3, L4, F70, F77	1+, 3++
- Heath & Reach	L2, L3, L4	1+, 3++
- Linslade (Derwent Road)	L2, L3, L4	1+, 3++
- Linslade (Soulbury Road / Leighton Road)	L2, L3, L4	1+, 3++
- Meadow Way	L2, L3	1+, 3++
- Pages Park (for Leighton Railway)	L2, L3	1+, 3++
- Richmond Road	L2, L3	1+, 3++
- Roman Gate	L2, L3	1+, 3++
- Sandhills (Johnson Drive / Kestrel Way)	L2, L3	1+, 3++
- Stanbridge Road	L2, L3	1+, 3++
- Town Centre (West Street / High Street)	L2, L3	1+, 3++
- Vandyke Road	L2, L3	1+, 3++
Luton	L5	1+, 3++

DESTINATION	BUS ROUTES	BUS STOP
- Clipstone Park (Briggington Way)	L2, L3(Sundays)	A
- Grovebury Road (for Grovebury Retail Park)	L2, L3	1+, 3++
- Heath Road	L1	A
- Hockliffe Road	L1	A
- Linslade (Derwent Road)	150	X, Y
- Linslade (Soulbury Road / Leighton Road)	L2, L4	1+, 3++
- Meadow Way	L6*	A
- Pages Park (for Leighton Railway)	L5	C
- Richmond Road	L3(Sundays)	A
- Roman Gate	L3	1+, 3++
- Sandhills (Johnson Drive / Kestrel Way)	L1	A
- Stanbridge Road	L1	A
- Town Centre (West Street / High Street)	L2, L4	1+, 3++
- Vandyke Road	10 - 15 minutes walk from this station (see maps)	
Luton	150, 165	X, Y
- Billington Park	F70, F77, L1, L2, L3(Sundays), L5	A
- Brooklands Drive	F70, F77, L1, L2, L3(Sundays), L5	A
- Chamberlains Barn	F70, F77, L1, L2, L3(Sundays), L5	A
- Churchill Road	F70, F77, L1, L2, L3(Sundays), L5	A
- Heath & Reach	F70, F77, L1, L2, L3(Sundays), L5	A
- Linslade (Derwent Road)	F70, F77, L1, L2, L3(Sundays), L5	A
- Linslade (Soulbury Road / Leighton Road)	F70, F77, L1, L2, L3(Sundays), L5	A
- Meadow Way	F70, F77, L1, L2, L3(Sundays), L5	A
- Pages Park (for Leighton Railway)	F70, F77, L1, L2, L3(Sundays), L5	A
- Richmond Road	F70, F77, L1, L2, L3(Sundays), L5	A
- Roman Gate	F70, F77, L1, L2, L3(Sundays), L5	A
- Sandhills (Johnson Drive / Kestrel Way)	F70, F77, L1, L2, L3(Sundays), L5	A
- Stanbridge Road	F70, F77, L1, L2, L3(Sundays), L5	A
- Town Centre (West Street / High Street)	F70, F77, L1, L2, L3(Sundays), L5	A
- Vandyke Road	F70, F77, L1, L2, L3(Sundays), L5	A
Luton	F70, F77	A

DESTINATION	BUS ROUTES	BUS STOP
Stadium MK (Milton Keynes)	F70, F77	A
Stanbridge	F77	A
Stoke Hammond	F77	A
Stoke Mandeville Hospital	165	D, Z
Tilsworth	F77	A
Wing	150, 165	D, Z
Wingrave Crossroads	150, 165	D, Z
Wingrave Village	165	D, Z

**Notes**

- PlusBus destination, please see below for details.
- Bus routes 150, 162, 165, F77, L2 and L4 operate Mondays to Saturdays.
- Bus routes F70, L1, L3 and L5 operate daily.
- Bus services with a limited frequency from Leighton Buzzard, contact Traveline for bus times:
- Bus route 43 operates Tuesdays and Thursdays only from stops 1, 3+ or 3++ to Billington, Eaton Bray and Totternhoe.
- Bus route 47 operates Mondays to Fridays from stops 1, 3+ or 3++ to Hockliffe, Woburn, Woburn Sands, Aspley Guise, Husborne Crawley and Ridgmont.
- Bus route 162 operates Mondays, Tuesdays, Wednesdays, Thursdays and Saturdays from stop D to Bletchley or Soulbury (not Tuesdays) and Stewkley.
- Bus route 162 operates Mondays to Saturdays from stops 3+ or 3++ to Billington, Eaton Bray, Edlesborough, Dagnall and Ivinghoe Aston.
- Bus route 167 operates Tuesdays only from stops D to Ledburn, Mentmore, Long Marston, Marsworth, Pitstone and Ivinghoe.
- \* Bus route L6 operates limited journeys Mondays to Fridays only, please check timetable.
- + Buses call at West Street stop 1 on Tuesdays and Saturdays only.
- ++ Buses call at High Street stop 3 on all days except Tuesdays and Saturdays.
- Direct trains operate to Milton Keynes Central from this station.
- Change trains at Bletchley for this destination.
- Alight here for the Leighton Buzzard Railway, telephone 01525 373 888 for more information.

**Taxis**

Leighton Buzzard Station is served by a taxi rank or cab office. Check availability before travelling, and pre-book if necessary. Please consider using the following local operators: (Inclusion of this number doesn't represent any endorsement of the taxi firm)

<b>Burgins Taxis</b> 01525 372 131	<b>D &amp; R Taxis Plus</b> 01525 377 777	<b>Leighton Taxis</b> 01525 636 363
---------------------------------------	--	--

## Further information about all onward travel

<b>Local Cycle Info</b> <a href="http://centralbedfordshire.gov.uk">centralbedfordshire.gov.uk</a> For more information about cycle routes.	<b>National Cycle Info</b> <a href="http://sustrans.org.uk">sustrans.org.uk</a> Sustrans is the UK's leading sustainable transport charity.	<b>Bus Times</b> See timetable displays at bus stops. <a href="http://www.traveline.info">www.traveline.info</a> 0871 200 22 33 call cost 12p per minute plus your phone company's access charge	<b>NextBuses</b> Find the bus times for your stop. Search for a bus stop by entering a postcode, street & town or a stop name & town.	<b>PlusBus</b> <a href="http://plusbus.info">plusbus.info</a> A discount price 'bus pass' that you buy with your train ticket. It gives you unlimited bus travel around your chosen town, on participating buses.
---	---	--	---	---

## National Rail Enquiries

<b>Online</b> <a href="http://nationalrail.co.uk">nationalrail.co.uk</a>	<b>NRE App</b> Free National Rail Enquiries app for iOS and Android	<b>Social Media</b> facebook.com/nationalrailenq @nationalrailenq	<b>Alert Me</b> You can sign up to Alert Me messages on the National Rail Enquiries website where you can receive train and platform notifications directly to your smart phone. <a href="http://nationalrail.co.uk/alertme">nationalrail.co.uk/alertme</a>	<b>Contact Centre</b> 03457 48 49 50 Calls cost no more than calls to geographic numbers (01 or 02) and may be recorded.	<b>PlusBike</b> <a href="http://nationalrail.co.uk/plusbike">nationalrail.co.uk/plusbike</a> For more information.
---	--	---	---	--	--

	 Britain's train companies working together	
--	--	--

This poster shows details of popular destinations and main, frequent bus routes. Additional services may run, so please check with Traveline or see posters at local bus stops. Whilst considerable care has been taken to ensure the information contained on this poster is correct and accurate, National Rail cannot accept responsibility for any loss or inconvenience caused by any errors or omissions, or for loss, damage, injury or inconvenience relating to the cancellation, alteration, delay or diversion of a service. For any feedback, please e-mail [comments@onwardtravelposters.com](mailto:comments@onwardtravelposters.com)

Scan this code with your mobile for full station information.