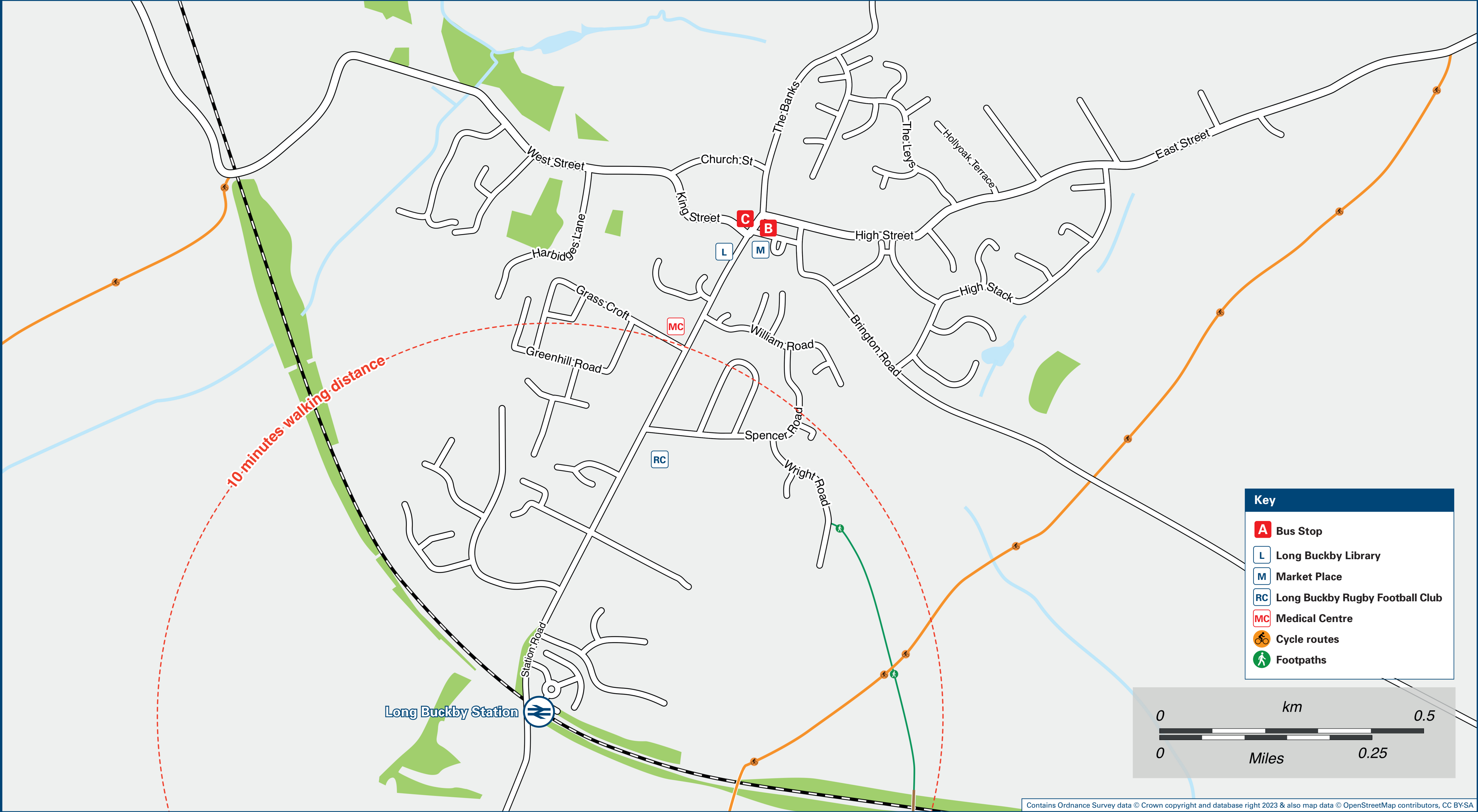




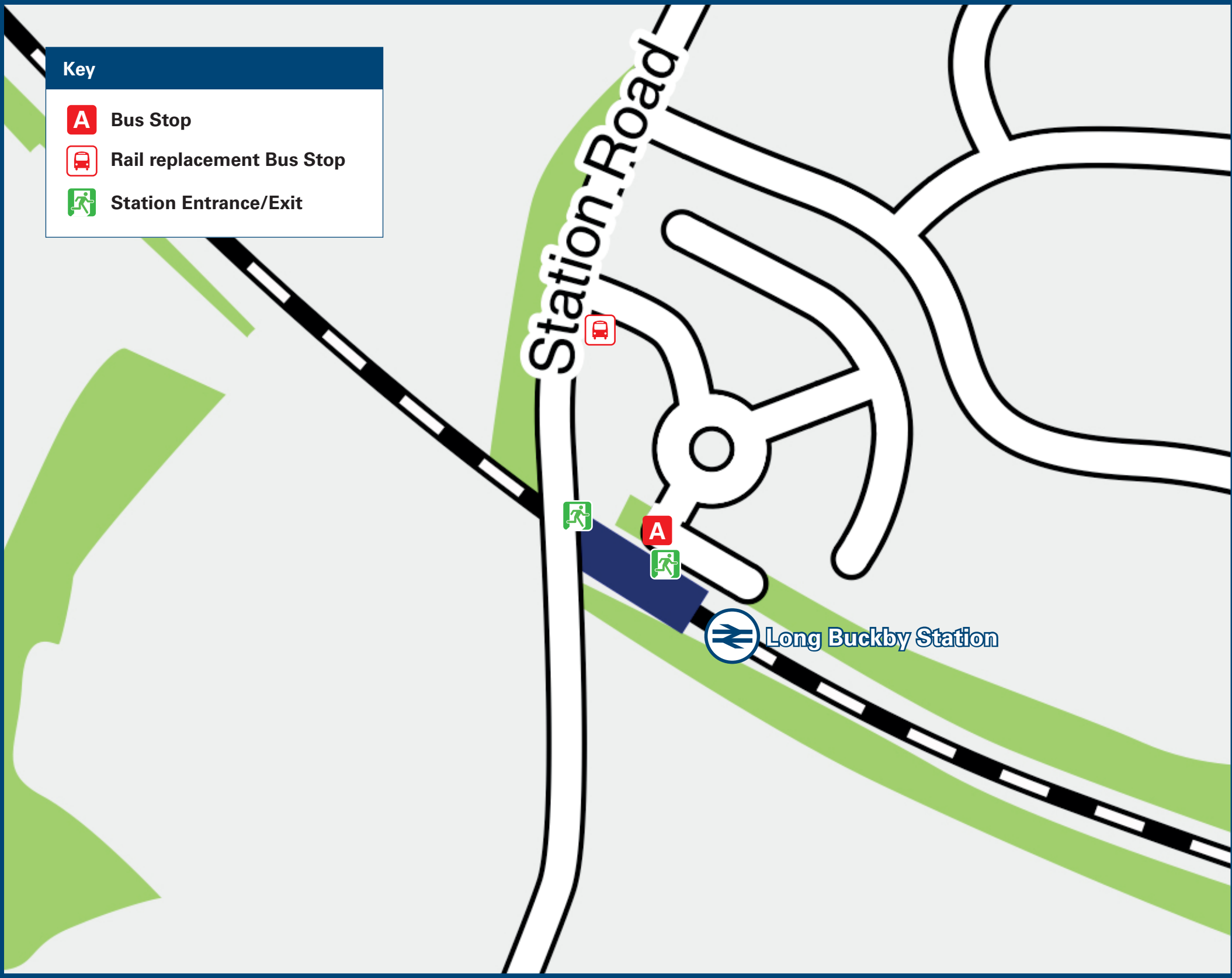
Long Buckby Station

Onward Travel Information

Local area map



Buses



Rail replacement buses/coaches depart from the entrance to the station car park on Station Road.

Main destinations by bus

(Data correct at September 2023)



DESTINATION	BUS ROUTES	BUS STOP
Daventry (Lang Farm and Monksmoor)	D4	A
Daventry (Royal Oak Way)	D4	A
Daventry (Town Centre)	D4	A
DIRFT (South, Celtic Way)	96	Market Place B
DIRFT 3	96	Market Place B
East Haddon	96	Market Place C
Long Buckby Village (High Street / Holyoake Terrace)	D4	A
Long Buckby Village (Market Place)	15 minutes walk from this Station	
	D4	A
Long Buckby Wharf	D4	A
West Haddon	96	Market Place B

Notes

Bus route D4 operates a limited service on Mondays to Fridays only, including morning and evening peak journeys.
Bus route 96 operates Mondays to Saturdays from Long Buckby Market Place.
For more information about these services please contact Stagecoach Midlands www.stagecoachbus.com/help-and-contact or call 0345 241 8000 or contact Traveline on 0871 200 22 33.
Direct trains operate to this destination from this station.

Taxis

Long Buckby Station has no taxi rank or cab office. Advance booking is essential, please consider using the following local operators: (Inclusion of this number doesn't represent any endorsement of the taxi firm)

Call-A-Taxi
01327 877 477

Taxi Daventry
01327 223 275

Link Hire
01327 704 000

Sure Cabs
01327 312 312

Further information about all onward travel

Local Cycle Info	National Cycle Info	Bus Times	NextBuses	PlusBus
daventrydc.gov.uk For more information about cycle routes.	sustrans.org.uk Sustrans is the UK's leading sustainable transport charity.	See timetable displays at bus stops. www.traveline.info 0871 200 22 33 calls cost 15p per minute plus your phone company's access charge	Find the bus times for your stop. Search for a bus stop by entering a postcode, street & town or a stop name & town.	plusbus.info A discount price 'bus pass' that you buy with your train ticket. It gives you unlimited bus travel around your chosen town, on participating buses.

National Rail Enquiries

Online	NRE App	Social Media	Alert Me	Contact Centre	PlusBike
nationalrail.co.uk	Free National Rail Enquiries app for iOS and Android	facebook.com/nationalrailenq @nationalrailenq	You can sign up to Alert Me messages on the National Rail Enquiries website where you can receive train and platform notifications directly to your smart phone. nationalrail.co.uk/alertme	03457 48 49 50 Calls cost no more than calls to geographic numbers (01 or 02) and may be recorded.	nationalrail.co.uk/plusbike For more information.

