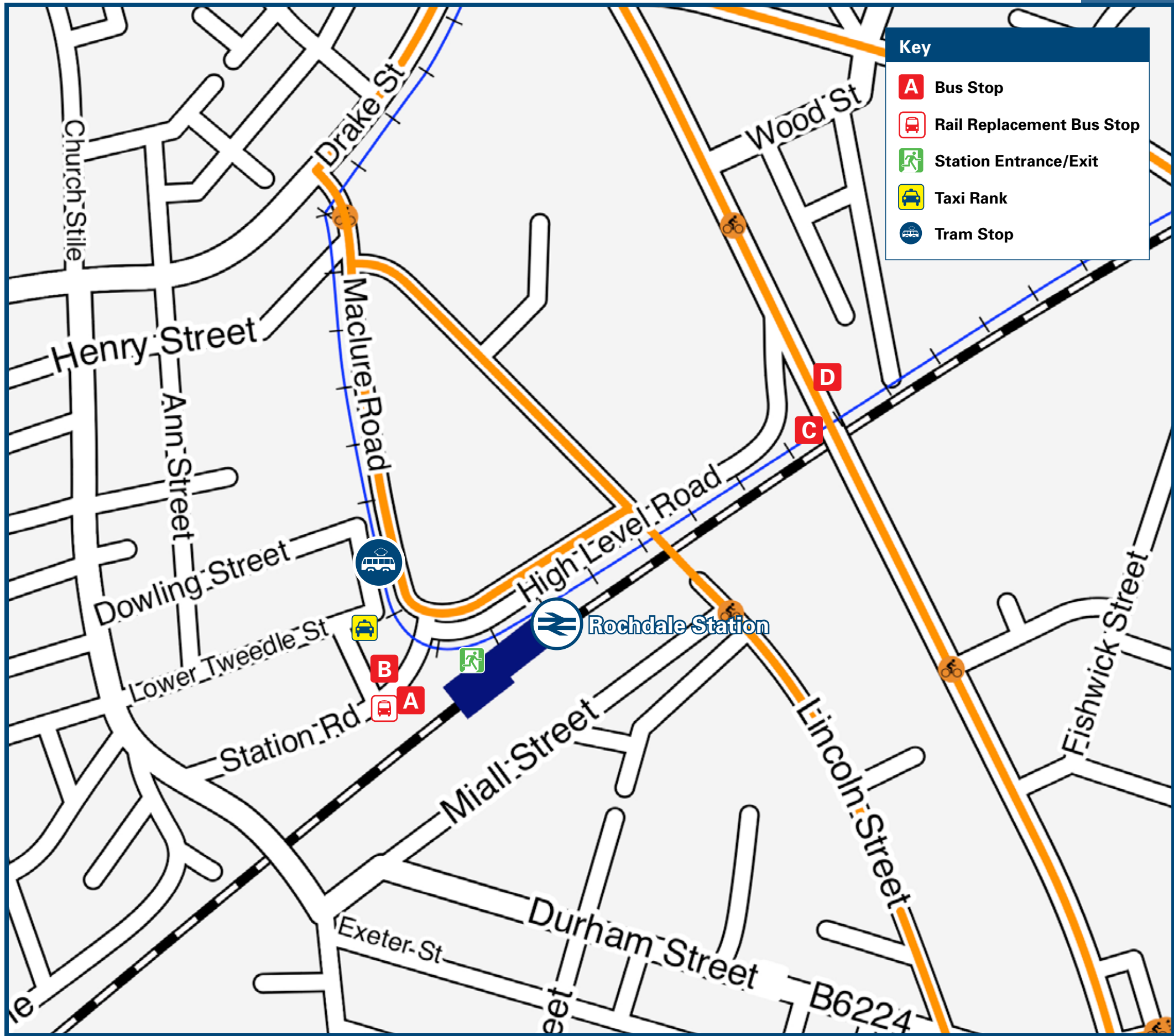




# Rochdale Station

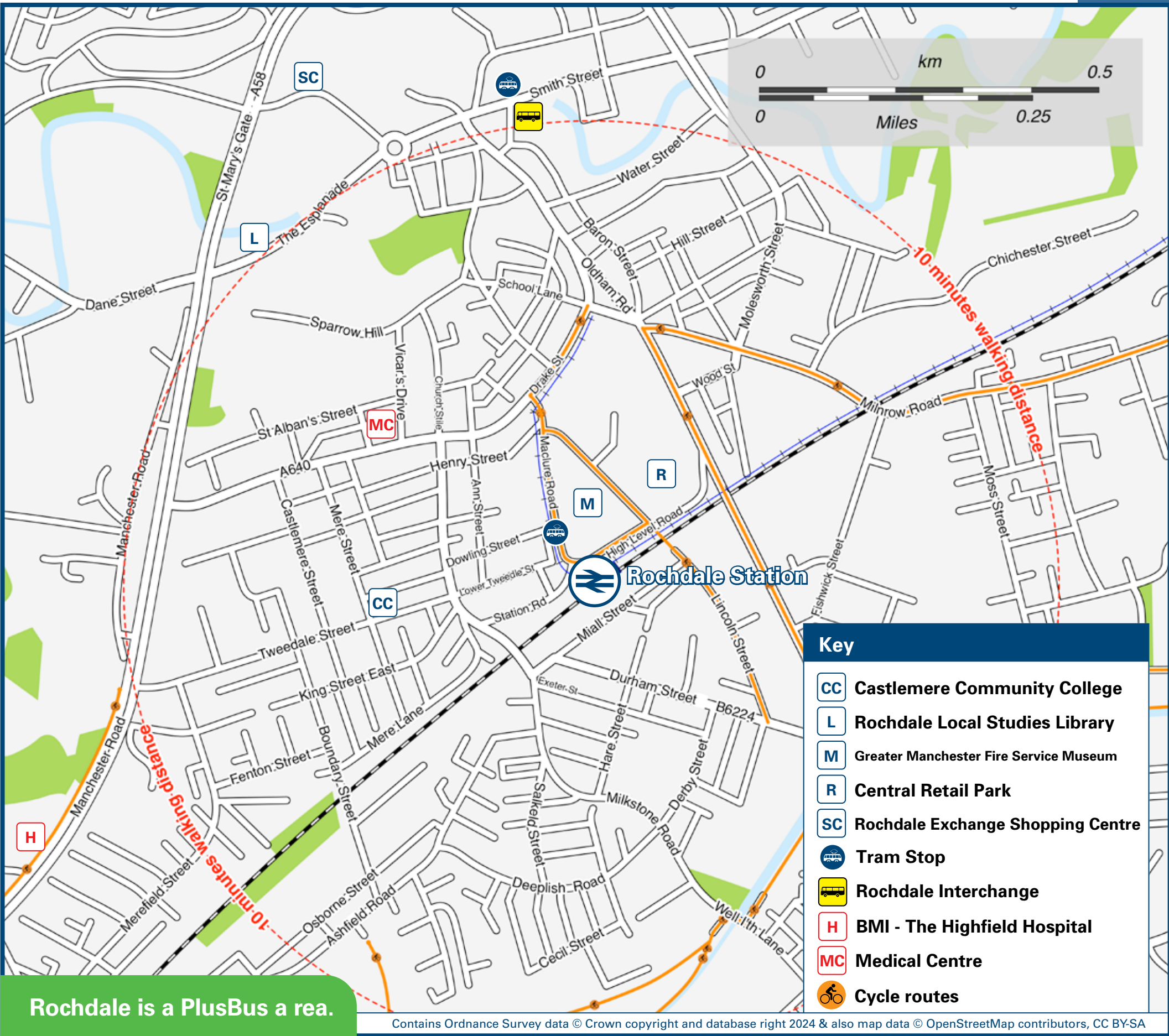
## Onward Travel Information

### Buses, Trams and Taxis



Rail replacement buses depart from the Network Rail Parking Bay outside the station front.

### Local area map



**PlusBus** is a discount price 'bus pass' that you buy with your train ticket. It gives you unlimited bus travel around your chosen town, on participating buses. Visit [www.plusbus.info](http://www.plusbus.info)

### Main destinations by bus and tram



DESTINATION	BUS/TRAM ROUTES	BUS/TRAM STOP
Ashton-under-Lyne	409	D
Balderstone	406, 409	D
Bolton	471	A
Bradley Fold	471	A
Buckstones	436*	D
Burnedge	436*	D
Bury	471	A
Failsworth (Tram Stop)	Tram	Tram Stop
Firgrove	450	A
	436*	D
Heap Bridge	471	A
Heywood	471	A
High Crompton	436*	D
The Highfield Hospital	471	A
Hollinwood	Tram	Tram Stop
Holt Estate (Kiln Lane)	450	A
	Tram	Tram Stop
Kingsway Business Park	450	A
Kirkholt	406	D

DESTINATION	BUS/TRAM ROUTES	BUS/TRAM STOP
	450	A
Lower Place	406, 409, 436*	D
Marland	471	A
Milnrow	Tram	Tram Stop
	450	A
Newbold	Tram	Tram Stop
	Tram	Tram Stop
Newhey	450	A
	436*	D
Newton Heath and Moston (Tram Stop)	Tram	Tram Stop
Oldham Mumps (Tram Stop)	Tram	Tram Stop
Oldham Town Centre	Tram	Tram Stop
	409	D
	Tram	Tram Stop
Rochdale Town Centre	451, 471	B
	406, 409, 435	C
Royal Oldham Hospital	409	D
Royton	409	D

DESTINATION	BUS/TRAM ROUTES	BUS/TRAM STOP
Shaw	Tram	Tram Stop
	436*	D
South Chadderton	Tram	Tram Stop
	450	A
Stoneyfield	406, 409, 436*	D
Sudden	471	A
Thornham (Summit)	409	D
Thorp (Oozewood Road)	409	D
	450	A
Turf Hill	436*	D

#### Notes

Bus routes 406, 409, 435, 436, 437, 450, 451 and 471 operate daily, including evenings, Sundays and public holidays.

Plusbus tickets are valid on all buses in Greater Manchester. Please note that Plusbus tickets are NOT valid on the Metrolink Trams.

It's a 10 to 15 minutes walk from this station to Rochdale Town Centre, see Local area map for directions.

@ Additional bus services operate from Rochdale Interchange in the town centre, contact Traveline on 0871 200 22 33 for details.

\* To this destination, bus route 436 operates daytime and early evenings Mondays to Saturdays only from stop (D). Daily journeys run as 435 from Rochdale Interchange.

PlusBus destination, please see below for details.

### Taxis

Rochdale station is served by a taxi rank or a cab office. Check availability before travelling, and pre-book if necessary. Consider using the following local operators: (Inclusion of this number doesn't represent any endorsement of the taxi firm)

**Central Taxis**  
01706 378 000

**Kings Private Hire**  
01706 656 560

**Rochdale Town Taxis**  
01706 750 750

### Further information about all onward travel

#### Local Cycle Info

[rochdale.gov.uk](http://rochdale.gov.uk)

For more information about cycle routes.

#### National Cycle Info

[sustrans.org.uk](http://sustrans.org.uk)

Sustrans is the UK's leading sustainable transport charity.

#### Bus Times

See timetable displays at bus stops.

[www.traveline.info](http://www.traveline.info)  
0871 200 22 33  
calls cost 15p per minute plus your phone company's access charge

#### NextBuses

Find the bus times for your stop. Search for a bus stop by entering a postcode, street & town or a stop name & town.

#### PlusBus

[plusbus.info](http://plusbus.info)

A discount price 'bus pass' that you buy with your train ticket. It gives you unlimited bus travel around your chosen town, on participating buses.

### National Rail Enquiries

#### Online

[nationalrail.co.uk](http://nationalrail.co.uk)

#### NRE App

Free National Rail Enquiries app for iOS and Android

#### Social Media

facebook.com/nationalrailenq  
@nationalrailenq

#### Alert Me

You can sign up to Alert Me messages on the National Rail Enquiries website where you can receive train and platform notifications directly to your smart phone.  
[nationalrail.co.uk/alertme](http://nationalrail.co.uk/alertme)

#### Contact Centre

03457 48 49 50  
Calls cost no more than calls to geographic numbers (01 or 02) and may be recorded.

#### PlusBike

[nationalrail.co.uk/plusbike](http://nationalrail.co.uk/plusbike)  
For more information.



This poster shows details of popular destinations and main, frequent bus routes. Additional services may run, so please check with Traveline or see posters at local bus stops. Whilst considerable care has been taken to ensure the information contained on this poster is correct and accurate, National Rail cannot accept responsibility for any loss or inconvenience caused by any errors or omissions, or for loss, damage, injury or inconvenience relating to the cancellation, alteration, delay or diversion of a service. For any feedback, please e-mail [comments@onwardtravelposters.com](mailto:comments@onwardtravelposters.com)

Scan this code with your mobile for full station information.