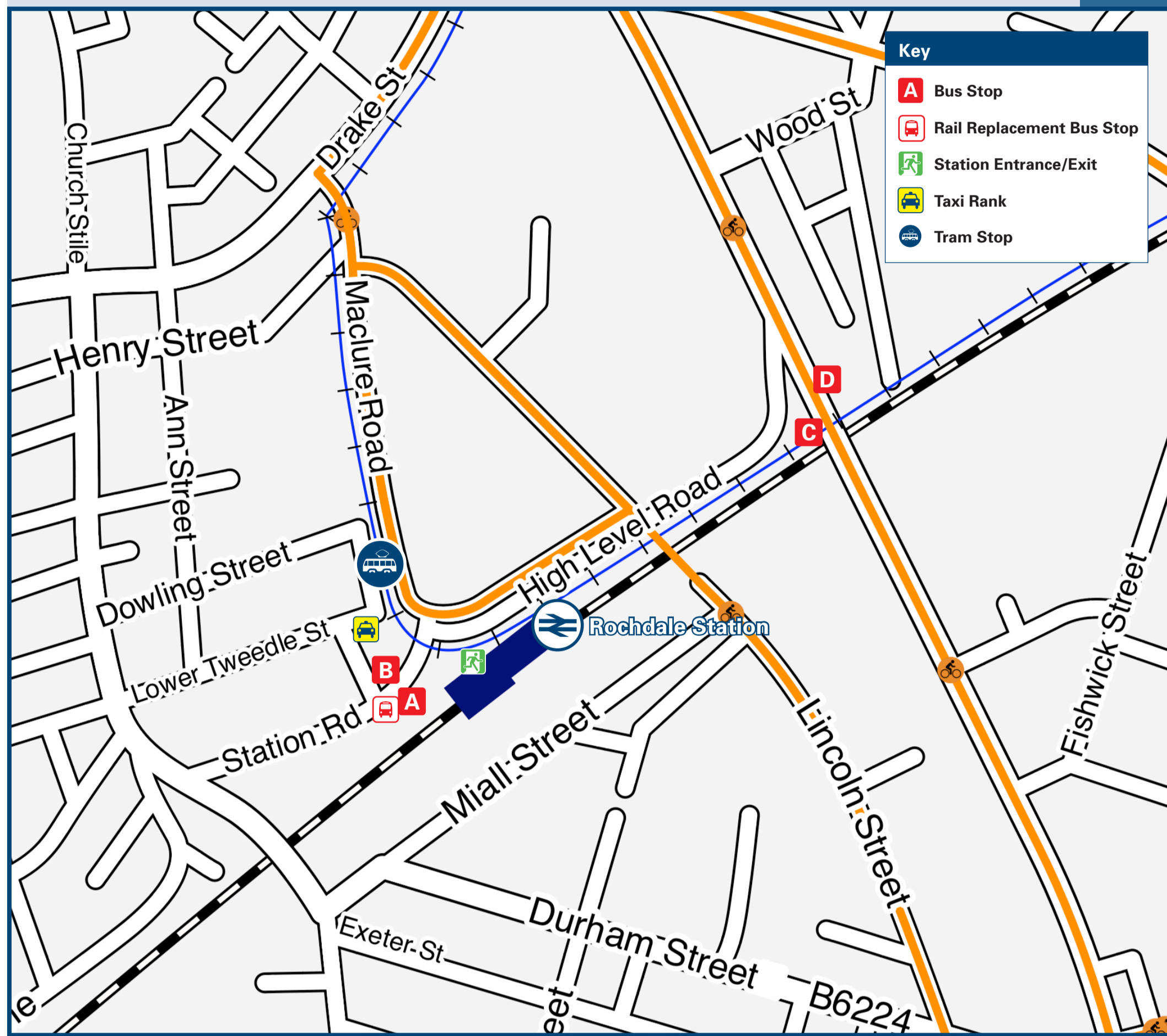




# Rochdale Station

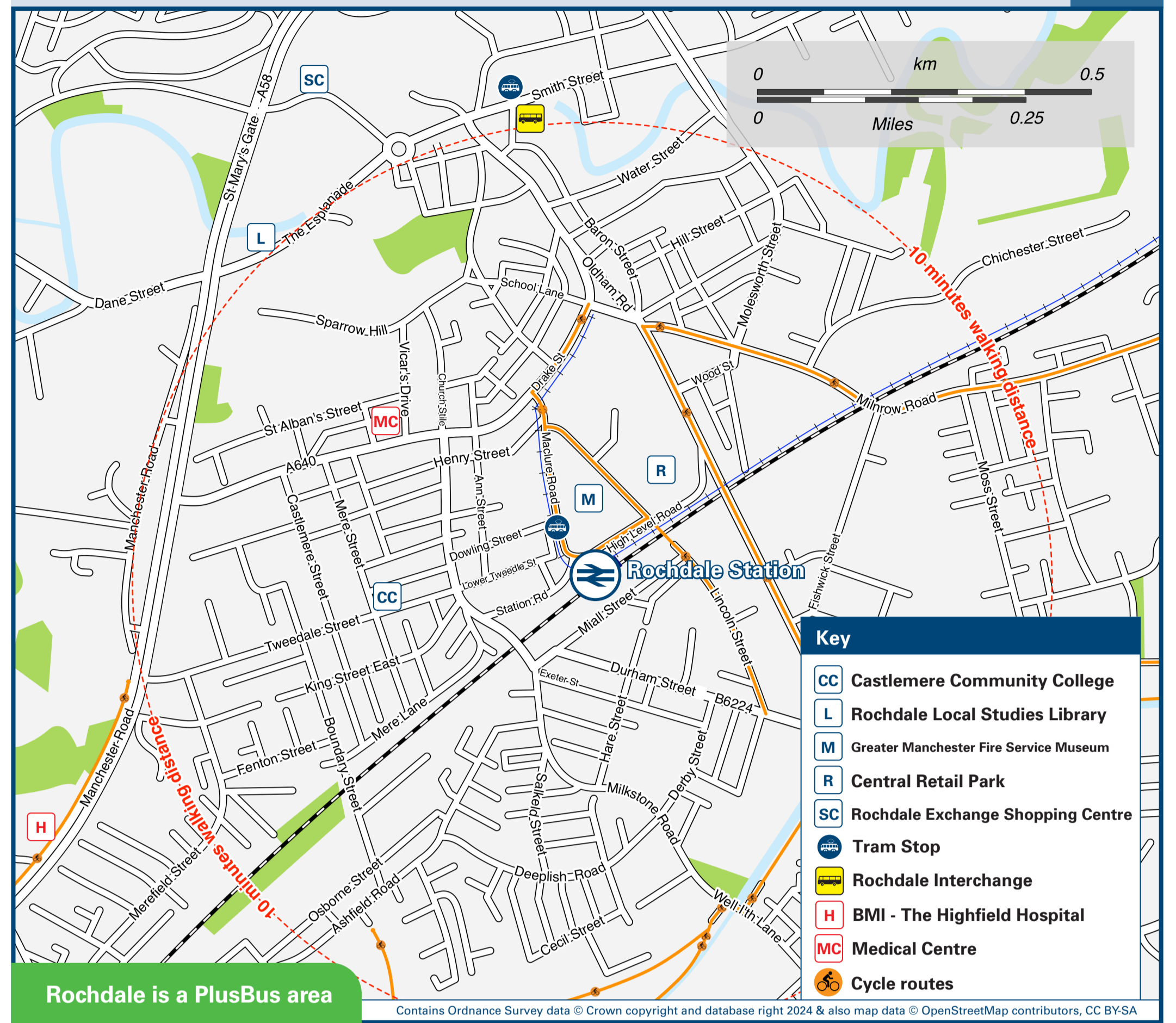
# Onward Travel Information

## Buses, Trams and Taxis



Rail replacement buses Pick Up / Drop Off at the Network Rail Parking Bay outside the station front.

## Local area map



Add PlusBus to your train ticket—now available on eTicket from leading rail ticketing apps—for unlimited bus travel in the PlusBus zone in your destination town or city. Visit [www.plusbus.info](http://www.plusbus.info)

## Main destinations by bus and tram

(Data correct at February 2026)

DESTINATION	BUS/TRAM ROUTES	BUS/TRAM STOP
Ashton-under-Lyne	409	D
Balderstone	409	D
Bolton	471	A
Bradley Fold	471	A
Buckstones	436*	D
Burnedge	436*	D
Bury	471	A
Failsworth (Tram Stop)	Tram	Tram Stop
Firgrove	450	A
Heap Bridge	436*	D
Heywood	471	A
High Crompton	471	A
The Highfield Hospital	436*	D
Hollinwood	471	A
Holt Estate (Kiln Lane)	450	A
Kingsway Business Park	Tram	Tram Stop
Kirkholt	450	A
Lower Place	406, 409, 436*	D

DESTINATION	BUS/TRAM ROUTES	BUS/TRAM STOP
Marland	471	A
Milnrow	Tram	Tram Stop
Newbold	450	A
Newhey	Tram	Tram Stop
Newton Heath and Moston (Tram Stop)	450	A
Oldham Mumps (Tram Stop)	436*	D
Oldham Town Centre	Tram	Tram Stop
Rochdale Town Centre	409	D
Royal Oldham Hospital	451, 471	B
Royton	406, 409, 435	C
Shaw	409	D
South Chadderton	Tram	Tram Stop
Stoneyfield	450	A

DESTINATION	BUS/TRAM ROUTES	BUS/TRAM STOP
Sudden	471	A
Thornham (Summit)	409	D
Thorp (Oozewood Road)	409	D
Turf Hill	450	A
	436*	D

### Notes

- PlusBus destination, please see below for details.
- Bus routes 406, 409, 435, 450, 451 and 471 operate daily services, including evenings, Sundays and public holidays.
- PlusBus tickets are valid on all buses in Greater Manchester. Please note that PlusBus tickets are NOT valid on the Metrolink Trams.
- For bus times and days of operation please contact TraveLine on [www.traveline.info](http://www.traveline.info) or call: 0871 200 22 33
- It's a 10 to 15 minutes walk from this station to Rochdale Town Centre, see Local area map for directions.
- Additional bus services operate from Rochdale Interchange in the town centre, contact TraveLine on 0871 200 22 33 for details.
- \* To this destination, bus route 436 operates a daytime and early evenings service on Mondays to Saturdays, only, from stop D. Daily journeys run as 435 from Rochdale Interchange.

### Taxis

Rochdale station is served by a taxi rank or a cab office. Check availability before travelling, and pre-book if necessary. Consider using the following local operators: (Inclusion of this number doesn't represent any endorsement of the taxi firm)

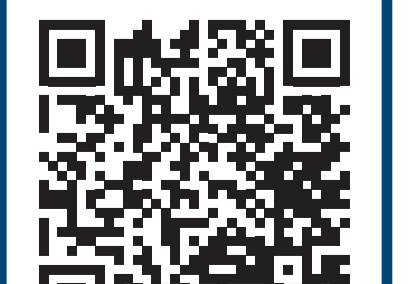
<b>Central Taxis</b> 01706 633 335	<b>Rochdale Town Taxis</b> 01706 750 750	<b>Streamline Taxis</b> 01706 710 100
---------------------------------------	---	--

Further information about all onward travel

<b>Local Cycle Info</b> <a href="http://rochdale.gov.uk">rochdale.gov.uk</a> For more information about cycle routes.	<b>National Cycle Info</b> <a href="http://walkwheelcycletrust.org.uk">walkwheelcycletrust.org.uk</a>	<b>Bus Times</b> See timetable displays at bus stops. <a href="http://www.traveline.info">www.traveline.info</a> 0871 200 22 33 call cost 15p per minute plus your phone company's access charge	<b>PlusBus</b> <a href="http://plusbus.info">plusbus.info</a> PlusBus is a discount price 'bus pass' that you buy with your train ticket. It gives you unlimited bus travel around your chosen town, on participating buses. Visit <a href="http://www.plusbus.info">www.plusbus.info</a>
---	--	--	---

National Rail Enquiries

<b>Online</b> <a href="http://nationalrail.co.uk">nationalrail.co.uk</a>	<b>NRE App</b> Free National Rail Enquiries app for iOS and Android	<b>Social Media</b> facebook.com/nationalrailenq @nationalrailenq	<b>Alert Me</b> You can sign up to Alert Me messages on the National Rail Enquiries website where you can receive train and platform notifications directly to your smart phone. <a href="http://nationalrail.co.uk/alertme">nationalrail.co.uk/alertme</a>	<b>Contact Centre</b> 03457 48 49 50 Calls cost no more than calls to geographic numbers (01 or 02) and may be recorded.	<b>PlusBike</b> <a href="http://nationalrail.co.uk/plusbike">nationalrail.co.uk/plusbike</a> For more information.
---	--	---	---	--	--



This poster shows details of popular destinations and main, frequent bus routes. Additional services may run, so please check with TraveLine or see posters at local bus stops. Whilst considerable care has been taken to ensure the information contained on this poster is correct and accurate, National Rail cannot accept responsibility for any loss or inconvenience caused by any errors or omissions, or for loss, damage, injury or inconvenience relating to the cancellation, alteration, delay or diversion of a service. For any feedback, please e-mail [comments@onwardtravelposters.com](mailto:comments@onwardtravelposters.com)

Scan this code with your mobile for full station information.