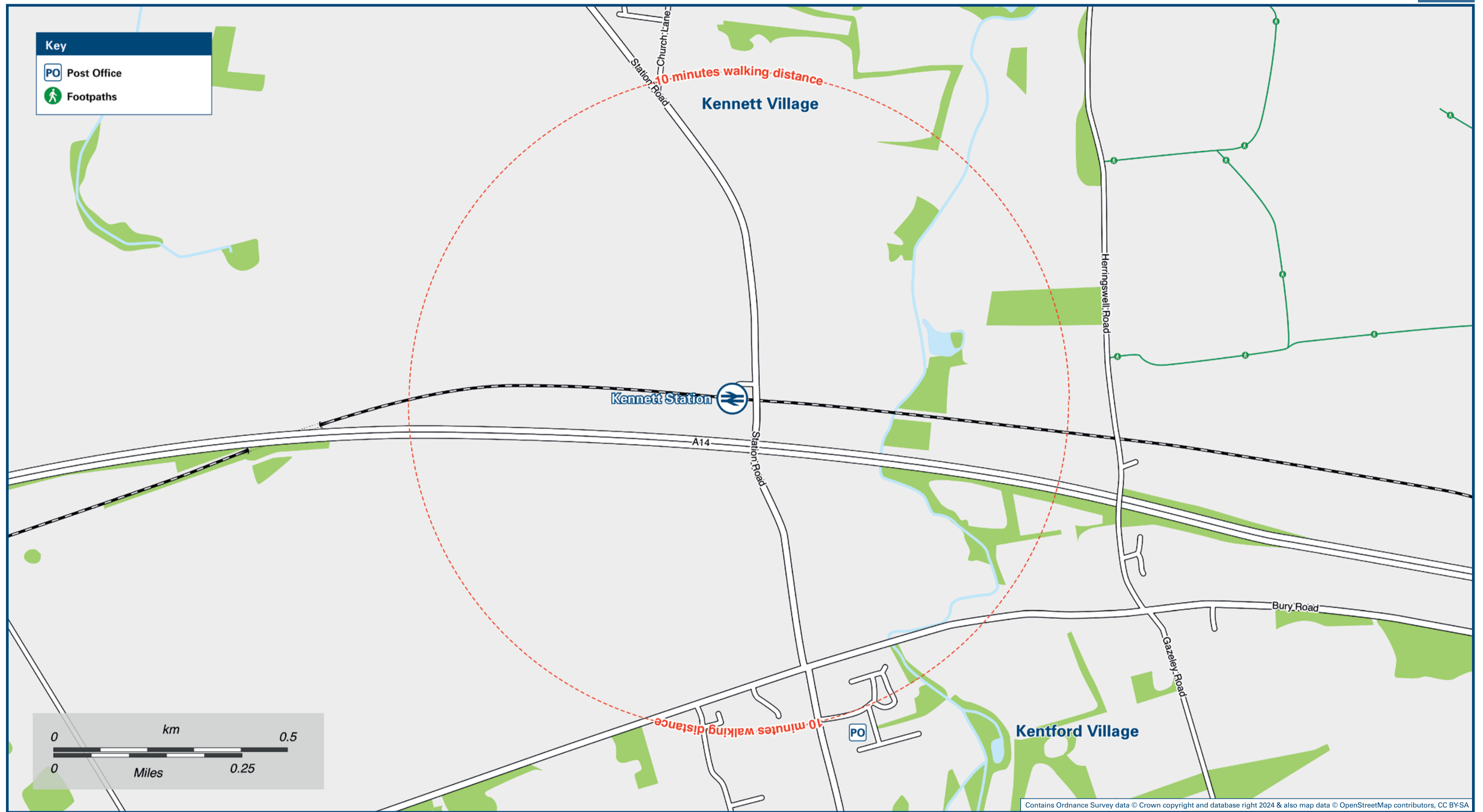




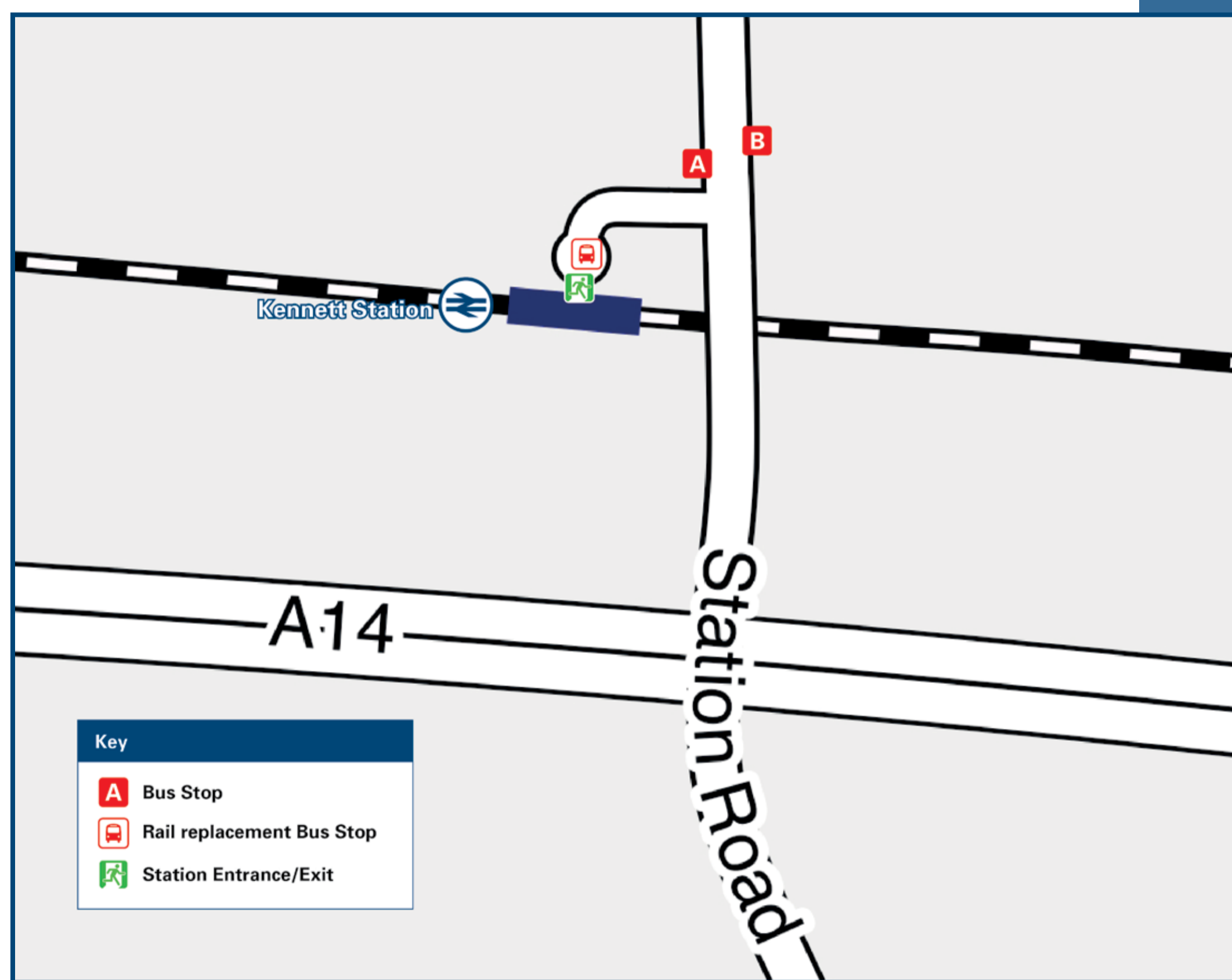
# Kennett Station

# Onward Travel Information

## Local area map



## Buses



Rail replacement bus services do not serve this station. Customers are advised to use either Bury St Edmunds or Newmarket stations for rail replacement services.

## Main destinations by bus

(Data correct at September 2024)

DESTINATION	BUS ROUTES	BUS STOP
Bury St Edmunds	16	A
Icklingham	16	A
Kennett Village	5 - 10 minutes walk (approx.) from this Station	
Mildenhall	16	A
Moulton	16	B
Newmarket	16	B
Red Lodge	16	A
Worlington	16	A

**Notes**  
 Bus route 16 runs Mondays to Saturdays, only. No Sunday service.  
 Direct trains operate to this destination from this Station

## Taxis

Kennett Station has no taxi rank or cab office. Advance booking is essential, please consider using the following local operators: (Inclusion of this number doesn't represent any endorsement of the taxi firm)

**Newmarket Captain Cabs**  
01638 563 599

**Star Taxi**  
01638 790 790

**24-7 United Cabs**  
01638 500 500

## Further information about all onward travel

<b>Local Cycle Info</b> <a href="http://www.suffolkboard.com/cycle">www.suffolkboard.com/cycle</a> For more information about cycle routes.	<b>National Cycle Info</b> <a href="http://sustrans.org.uk">sustrans.org.uk</a> Sustrans is the UK's leading sustainable transport charity.	<b>Bus Times</b> See timetable displays at bus stops. <a href="http://www.traveline.info">www.traveline.info</a> 0871 200 22 33 call cost 13p per minute plus your phone company's access charge	<b>NextBuses</b> Find the bus times for your stop. Search for a bus stop by entering a postcode, street & town or a stop name & town. Calls cost no more than calls to geographic numbers (01 or 02) and may be recorded.	<b>PlusBus</b> <a href="http://plusbus.info">plusbus.info</a> A discount priced 'bus pass' that you buy with your train ticket. It gives you unlimited bus travel around your chosen town, on participating buses.
---	---	--	--	--

## National Rail Enquiries

<b>Online</b> <a href="http://nationalrail.co.uk">nationalrail.co.uk</a>	<b>NRE App</b> Free National Rail Enquiries app for iOS and Android	<b>Social Media</b> facebook.com/nationalrailenq @nationalrailenq	<b>Alert Me</b> You can sign up to Alert Me messages on the National Rail Enquiries website where you can receive train and platform notifications directly to your smart phone. <a href="http://nationalrail.co.uk/alertme">nationalrail.co.uk/alertme</a>	<b>Contact Centre</b> 03457 48 49 50 Calls cost no more than calls to geographic numbers (01 or 02) and may be recorded.	<b>PlusBike</b> <a href="http://nationalrail.co.uk/plusbike">nationalrail.co.uk/plusbike</a> For more information.
---	--	---	---	--	--



**National Rail**  
Britain's train companies working together



This poster shows details of popular destinations and main, frequent bus routes. Additional services may run, so please check with Traveline or see posters at local bus stops. Whilst considerable care has been taken to ensure the information contained on this poster is correct and accurate, National Rail cannot accept responsibility for any loss or inconvenience caused by any errors or omissions, or for loss, damage, injury or inconvenience relating to the cancellation, alteration, delay or diversion of a service. For any feedback, please e-mail [comments@onwardtravelposters.com](mailto:comments@onwardtravelposters.com)

Scan this code with your mobile for full station information.